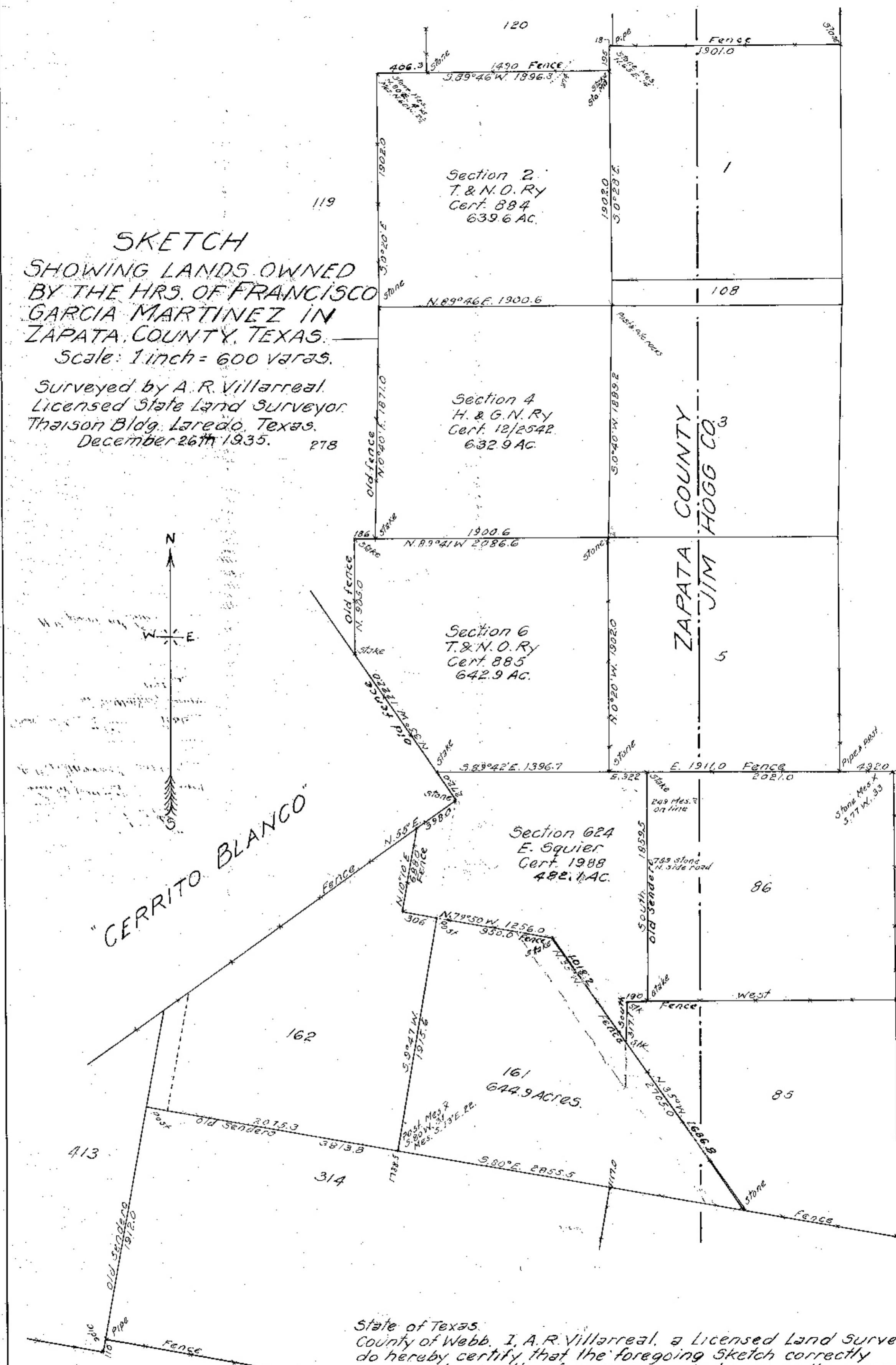


SKETCH
SHOWING LANDS OWNED
BY THE HRS. OF FRANCISCO
GARCIA MARTINEZ IN
ZAPATA COUNTY, TEXAS.

Scale: 1 inch = 600 varas.

Surveyed by A. R. Villarreal,
 Licensed State Land Surveyor,
 Thaison Bldg. Laredo, Texas.
 December 26th 1935. 218



State of Texas,
 County of Webb. I, A. R. Villarreal, a Licensed Land Surveyor
 do hereby certify that the foregoing Sketch correctly
 represents results of surveys made by me on the ground
 on November 8th to 20th A. D. 1935, and is true and correct.
 to the best of my knowledge and belief.
 Witness my hand this the 26th
 day of December, A. D. 1935. *A. R. Villarreal*
 Licensed Land Surveyor.