

RECEIVED
 JUN 17 1927
 REFERRED TO SCHOOL 3

MF 12049

The State of Texas |

County of Anderson | Field Notes of a Section of the Neches River Bed
 Made for John H. Tyler, of Austin, Texas.

Said survey was made by virtue of his application, filed with the County Surveyor of Anderson Co., Texas and recorded in Vol 1 on page 16 in Co., Surveyors' Records- this the 21st day of March, 1927 at 11 o'clock A.M.,

Said area is situated about 20 miles N.E. from Palestine, and about 25 miles N.W. of Rusk, County Sites of Anderson and Cherokee Counties, Texas.

Said survey being described as follows:

Beginning at a stake at the N.W. cor of M.F. 9853, M.A. Davey survey, and on the West bank of the Neches River in the E. line of Anderson Co Texas, and the E.B. line of the W.F. Pool League in said County. Thence up said River with its meanders as follows:

N $50\frac{1}{2}$ deg E. 200 vs. N $25\frac{3}{4}$ deg E 200 vs. East 160 vs. S $53\frac{1}{2}$ deg E. 200 vs. East 90 vs N. $52\frac{3}{4}$ E 130 vs. N $23\frac{3}{4}$ E 400 vs. N $37\frac{3}{4}$ E 300. N $69\frac{1}{2}$ E 130 vs. S $6\frac{1}{2}$ E 110 vs S 63 E 310 vs N $30\frac{1}{2}$ E 390 vs. North 180 vs. N $57\frac{1}{2}$ E 140 vs N 11 W 130 vs. N 38 W 240 vs. North 180 vs East 250 vs. N 18 E 200 vs and passed the N.E. cor of the W.F. Pool League, being also the S.E. cor of The Thos Goss League, continuing with said River. N 10 E 200 vs pass the center of T & N.O. Ry. N 15 W. 200 vs North 89 vs N 40 W 30 vs. N 10 W. 90 vs N 20 W. 110 vs. N 50 W. 200 vs. N 15 W. 300 vs. N 30 W 100 vs. N 35 W. 300 vs. North 150 vs. N 30 W. 350 vs N $63\frac{1}{2}$ W 1143 and passed the N.E. cor of the said Goss League and the S E. cor of the Jas F. Timmons survey, continue with said River N 10 W 98 vs N $7\frac{3}{4}$ deg E 130 vs N $26\frac{3}{4}$ E 240 vs N $69\frac{3}{4}$ E 260 vs. S $85\frac{3}{4}$ E 180 vs S $67\frac{3}{4}$ E 260 vs East 320 vs N 31 deg E 390 vs S 75 E 280 vs. N 39 deg E 110 vs. N $11\frac{1}{2}$ W 340 vs N $27\frac{3}{4}$ E 110 vs N $63\frac{1}{2}$ E 140 vs. N 16 E. 130 vs passing N.E. cor said Timmons Survey and S.E. Cor Joseph Ferguson Lg. continuing with said River N $28\frac{1}{2}$ W 300 vs N $51\frac{1}{2}$ W 450 vs N $27\frac{1}{2}$ W 200 vs N $68\frac{1}{2}$ W 470 vs N 78 W 550 vs N $71\frac{1}{2}$ W 330 vs N $13\frac{1}{4}$ W 160 vs N $40\frac{1}{2}$ E 310 vs N $23\frac{1}{2}$ E 290 vs N $3\frac{1}{2}$ E 352 vs N $43\frac{1}{2}$ W 210 N 32 W 270 vs and passed N.E. cor said Joseph Ferguson and S.E. cor of John Ferguson Leagues, continuing

with said River N 23 W 100 vs N 8 W 280 vs N 37 E 340 N 65 E 300 vs
 N 46 $\frac{1}{2}$ E 200 vs N 31 E 290 vs N 8 E 120 vs N 36 E 170 vs N 34 W 110 vs N
 28 E 110 vs East 120 vs N 63 E 100 vs N 88 $\frac{1}{2}$ E 270 vs N 55 E 100 vs.
 N 36 E 60 vs N 11 $\frac{1}{2}$ E 80 vs N 24 E 500 vs North 50 vs N 22 W 110 vs N
 82 $\frac{1}{2}$ W north 40 $\frac{1}{2}$ vs to the N.E. Cor of Anderson County, being also
 the S.E.cor of Henderson County, a stake on the W bank of said River
 for cor. Thence East 67 vs to a stake on the East bank of *Neches River*
 and in the West bdy line of the John Vaughan survey. Thence
 down the Neches River and the West line of Cherokee County as follows:
 S 82 $\frac{1}{2}$ E 200 vs S 24 E 180 vs. S 1 E 50 vs; S 24 $\frac{1}{2}$ W 490 vs S 13 W 90 vs.
 S 49 $\frac{1}{2}$ W 170 vs S 87 $\frac{1}{2}$ W 260 vs S 64 W 110 vs N 88 W 55 vs S 22 $\frac{1}{2}$ W 60 vs
 S 32 E 110 vs S 35 W 190 vs S 8 $\frac{1}{2}$ W 130 vs S 31 $\frac{1}{2}$ W 290 vs S 45 W 210 vs
 S 65 W 300 vs S 37 $\frac{1}{2}$ W 320 vs S 8 E 250 vs S 17 $\frac{1}{2}$ E 120 vs, this point
 being 63 vs due East of S.E.Cor of the John Ferguson League, continuing
 with said River S 33 E 250 vs. S 41 E 230 vs S 3 W 350 vs S 22 $\frac{1}{2}$ W 310
 vs S 41 $\frac{1}{2}$ W 280 vs S 13 E 130 vs S 71 $\frac{3}{4}$ E 300 vs S 77 $\frac{3}{4}$ E 550 vs S 68 $\frac{1}{2}$ E
 490 vs S 26 $\frac{1}{2}$ E 210 vs S 51 E 440 vs S 28 $\frac{1}{4}$ E 330 vs this point being
 66 vs due E from the S.E.cor of the Jas Ferguson League, continuing with
 said River S 15 W 140 vs S 62 $\frac{3}{4}$ W 130 vs S 31 $\frac{1}{2}$ W 85 vs S 10 $\frac{1}{2}$ E 330 vs
 S 34 W 160 vs N 79 W 275 vs S 33 $\frac{1}{2}$ W 320 vs S 88 $\frac{1}{2}$ W 330 vs N 68 $\frac{1}{2}$ W 270
 vs N 87 W 160 vs S 71 $\frac{1}{2}$ W 220 vs S 28 $\frac{1}{2}$ W 210 vs S 6 $\frac{3}{4}$ W 170 vs. S 34 $\frac{1}{2}$ E
 145 vs this point being 63 vs due East of the S.E.Cor of the Jas F.
 Timmons survey, continuing with said River as follows: S 63 $\frac{1}{2}$ E 1110 vs
 S 30 E 350 vs S 2 $\frac{1}{2}$ E 170 vs S 33 E 350 vs S 88 E 191 vs S 17 E 320 vs.
 S 47 $\frac{1}{2}$ E 190 vs S 14 $\frac{1}{2}$ E 120 vs S 11 E 180 vs S 15 E. 200 vs. S 7 W, 220
 vs this point being 72 vs due East of the S.E.Cor of the Thos Goss
 League, continuing with said River S 20 W 240 vs West 240 vs ~~W~~ South
 110 vs S 36 $\frac{1}{2}$ E 240 vs S 10 E 170 vs S 58 W 140 vs. South 145 vs S 32 W
 450 vs N 63 W. 350 vs N 14 W 80 vs S 70 $\frac{1}{2}$ W 80 vs S 36 $\frac{1}{2}$ W 300 vs. S 23 $\frac{1}{2}$
 W 375 vs S 52 W 160 vs S 84 W 145 vs N 54 W 190 vs N 89 W 100 vs S 26 W
 170 vs S 51 $\frac{1}{2}$ W 190 vs to the N.E. cor of M.F. 9853 M.A.Davey survey,
 said point being the N.W.cor of I & G.N.Ry Co Survey in said Cherokee
 County. Thence West crossing the Neches River 50 vs to the place of

beginning, containing 192.⁸⁵/₁₀₀ acres of land.

Surveyed June 7th to 10th 1927.

W.B. Chambers

County Surveyor Anderson County, Texas.

Taylor Skeete |
D.J. Crittenden | Chain Carriers.

THE STATE OF TEXAS |

COUNTY OF ANDERSON | I, W.B. Chambers, County Surveyor of Anderson
County, Texas, do certify that the above survey was made by me on
the ground and according to law, that the boundaries, limits and
corners, both natural and artificial are truly described in the
foregoing field notes just as I found them on the ground and that
same is of record in Book G on pages 324-5 in Surveyors Records
of Anderson County, Texas.

Witness my hand at office in Palestine, Texas this 15 day of June
A.D. 1927.

W.B. Chambers

County Surveyor, Anderson County, Texas.

And said field notes are recorded in Volume 1 on page 127
in Surveyors Records of Cherokee County, Texas.

This the 16 day of June A.D. 1927.

L.L. Moore

County Surveyor, Cherokee County, Texas.

M 712049 (3)
Ld. Office appl. No. 18018

Field Notes
filed
June 17, 1927

J. F. Robison
Comr.,
Lee Hawkins
clerk

RECEIVED AS STATED

\$ 1.00

JUN 17 1927

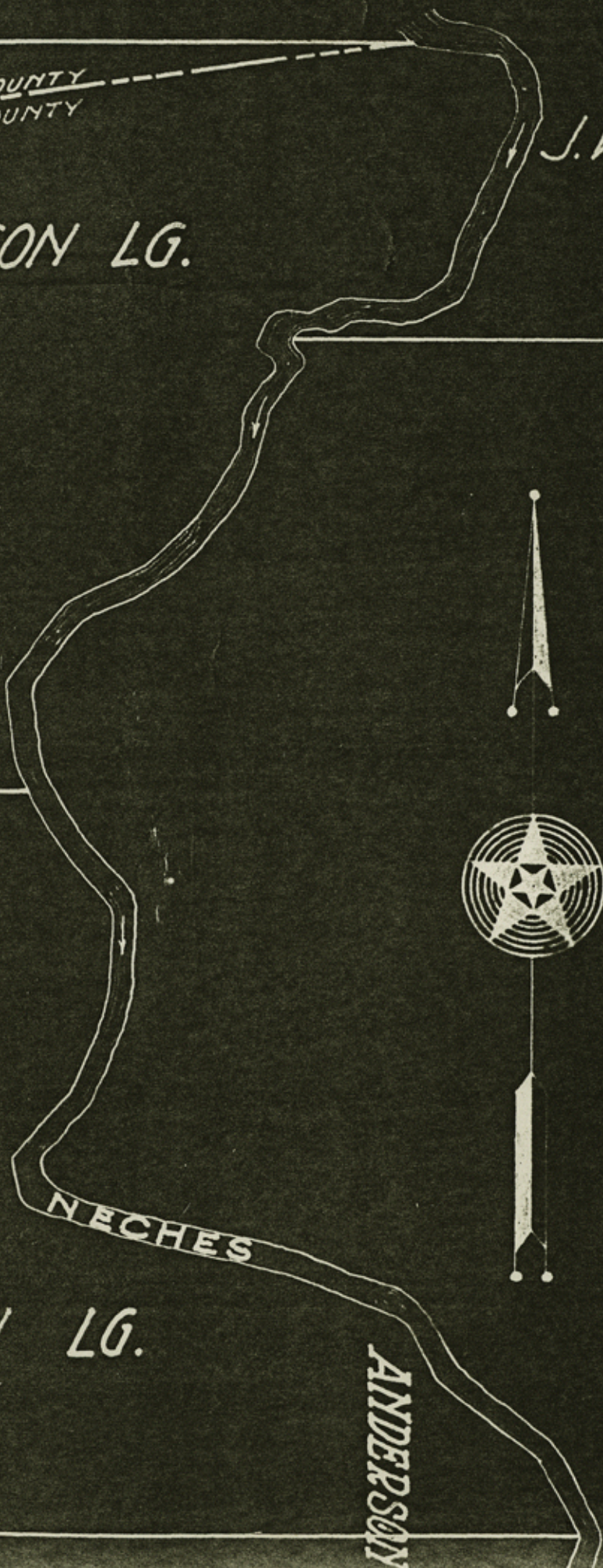
J. M. HAMILTON
RECEIVER

3

HENDERSON COUNTY
ANDERSON COUNTY

J. VAUGHAN

JOHN-FERGUSON LG.



JOS. FERGUSON LG.

ANDERSON

CHEROKEE

HEROKEE COUNTY

ANDERSON COUNTY

JOS. FERGUSON LG.

J.F. TIMMONS SUR.



THOS. GOSS LG.

W.F. POOL LG.

THOS. GOSS LG.

W.F. POOL LG.

I & G. N. R. R. Co. SUR

SURVEY OF A SECTION OF NECHES RIVER
MADE FOR J. N. H. TYLER

The Surveyors of Anderson County, Texas do hereby certify that the above survey was made by me on the ground and according to the best of my skill is a true and correct representation of the conditions just as I found them on the ground and said survey and the books of same are of record in Book 6 Page 314-325 of Surveyors records of Anderson County Texas surveyed June 7-8-9-10 1927

W. B. ...
Anderson County, Texas

sk. File No. 28-2

Anderson County

Copies of FN & Sk. Ind. in MF-12049,
Neches River

Filed June 20 19 83

GARRY MAURO, Com'r

By Douglas J. Howard

COUNTER # 12805

Anderson Co. Sk. Ind. #28

JUN 20 10 09 AM '83

Neches River

MF 11897

MF 11897

THE STATE OF TEXAS
COUNTY OF ANDERSON

Field notes of a survey of a section of the Neches River bed in between Anderson and Cherokee Counties, Texas, made for Lucius D. Henderson, of Poyner Texas by virtue of his application, filed with the County

Surveyor of Anderson County, Texas, on the 19th day of March, 1927, at 10 O'clock A.M. which application is of record in Book 1 (One) on Page 14 (Fourteen) of the Surveyor's Records of said County, at Palestine, Texas. Said survey is situated about 18 (eighteen) miles N.E. of Palestine, and about the same distance N.W. from Rusk County sites of Anderson and Cherokee Counties, and is described as follows:- Beginning at a stake in the S. margin of the I & G N Ry.R. and on the W. Bank of the said Neches River in the E.B. line of Anderson County, Texas, and being also the E.B. line of the L.O. Herrington Survey. Thence down said River with its meanders as follows: S. 4 1/2 E. 171 vrs. S. 12 1/2 E. 158 vrs. S. 57 1/2 E. 146 vrs. N 86 1/2 E. 119 vrs. S. 77 1/2 E. 179 vrs. S. 68 1/2 E. 138 vrs. S. 41 E. 146 vrs. S. 18 3/4 E. 140- and pass the N.E. cor. of the John H. Scaggs Survey: original witness tree, Large Gum mkd X is standing. Thence continuing with said River, and Scaggs E.B. line. S. 32 W. 100 vrs. S. 26 W. 320 vrs. S. 20 1/2 W. 382 vrs. S. 15 W. 238 vrs. S. 8 1/4 E. 135 vrs. S. 25 E. 80 vrs. S. 39 E. 142 vrs. S. 13 E. 140 vrs. and pass the S.E. corner of said Scoggs Survey, and the N.E. cor. of the Wm. B. Harrison Survey. Thence with River as follows:- S. 7 W. 200 vrs. S. 1/2 W. 200 vrs. S. 33 3/4 W. 190 vrs. S. 42 W. 301 vrs. S. 30 W. 348, cross spring branch, S. 21 1/4 W. 555 -to S.E. cor. of said Harrison Survey, and the N.E. cor. of the Wm. Gibson Survey, continuing with said River S. 5 1/2 W. 141 vrs. S. 11 1/2 W. 214 vrs. S. 21 1/2 W. 255 vrs. S. 15 1/4 W. 269 vrs. S. 28 E. 319 vrs. S. 18 W. 98 vrs. S. 61 3/4 W. 249 vrs. S. 37 1/2 W. 91 vrs. S. 8 1/2 E. 294 vrs. S. 4 1/2 E. 209 vrs. pass S.E. cor. of Wm. Gibson and N.E. cor. of John Blair Surveys, continuing with said River: S. 3 1/2 W. 141 vrs. S. 32 3/4 W. 564 vrs. S. 10 1/2 W. 185 vrs. South 200 vrs S. 42 1/2 E. 356 vrs. S. 51 1/2 E. 315 vrs. S. 39 1/4 E. 210 vrs. S. 45 E. 730 vrs. at 225 vrs. Pass Rockey Point Bridge across said River S. 52 1/2 E. 240 vrs. East 180 vrs S.E. cor. said Blair and W. cor. of M.A. 24 7/70 acre scrap Survey-Large Gum Blazed and Hacked. This point is also in the N.B. line of the Samuel Davis League-N. 60 E. 280 vrs. N. 70 E. 190 N. 87 E. 225 vrs. S. 63 1/4 E. 223 vrs. S. 27 1/2 E. 129 vrs to the East cor. of said M.A. Davey Survey, and being also the N.E. cor. of the Samuel Davis League, S.G. mkd. X for witness tree. Continuing with said River S. 25 1/2 E. 72 vrs. S. 30 E. 349 vrs. S. 52 E. 388 vrs. S. 72 1/4 E. 250 vrs. S. 49 1/2 E. 200 vrs. S. 35 1/2 E. 643 vrs. S. 33 1/4 E. 456 vrs. S. 30 1/2 E. 342 vrs. cross Wells Creek-S. 43 1/2 E. 212 vrs. S. 30 1/2 E. 208 vrs. S. 25 E. 283 and pass the S.E. cor. of said Davis League and the N.E. cor. of the M. Ellis Survey, continuing with said River S. 7 1/2 E. 190 vrs. S. 43 1/2 E. 200 vrs. S. 73 1/2 E. 500 vrs. S. 42 E. 130 vrs. S. 13 W. 270 vrs. S. 59 1/2 W. 476 vrs. S. 18 1/2 E. 353 vrs. S. 2 1/2 W. 241 vrs. S. 34 E. 247 vrs. and S. 21 E. to the S.E. cor. of the M. Ellis Survey and the N.E. cor. of the T.N. Jones Survey. This point being also the N.W. cor. of M.A. Davey's M.F. Survey, made for him in July 1925-A 36" Pine mkd. X for witness. Thence N. 82 E. across the Neches River to a 20" water Oak blazed on 4 sides for the N.E. cor. of said Davey M.F. Survey, on the E. bank of said River and in the W. line of Cherokee County. Thence up said Neches River and the west boundary line of Cherokee county as follows: N. 23 W. 315 vrs. N. 24 1/2 W. 300 vrs. N. 17 1/4 E. 120 vrs.; N. 27 W. 271 vrs. N. 59 E. 342 vrs. N. 40 1/2 E. 200 vrs.; N. 10 E. 302 vrs. N. 50 W. 193 vrs. N. 71 1/2 W. 455 vrs.; N. 23 W. 487 vrs. N. 33 1/4 W. 656 vrs. N. 36 W. 1360 vrs.; W. 50 3/4 W. 410 crossed a spring branch: N. 41 W. 200 vrs. N. 9 1/2 W. 176 vrs. N. 11 W. 241 vrs

COUNTER 12806

129 vrs to the East cor. of said M.A. Davey Survey, and being also the N.E. cor. of the same
Davis League, S.G. mkd. X for witness tree. Continuing with said River S. 25 1/2 E. 72 vrs. S.
30 E. 349 vrs. S. 52 E. 388 vrs. S. 72 1/4 E. 250 vrs. S. 49 1/2 E. 200 vrs. S. 35 1/2 E. 643 vrs.
S. 33 1/4 E. 456 vrs. S. 30 1/2 E. 342 vrs. cross Wells Creek-S. 43 1/2 E. 212 vrs. S. 30 1/2 E.
208 vrs. S. 25 E. 283 and pass the S.E. cor. of said Davis League and the N.E. cor. of the M.
Ellis Survey, continuing with said River S. 7 1/2 E. 190 vrs. S. 43 1/2 E. 200 vrs. S. 73 1/2 E.
500 vrs. S. 42 E. 130 vrs. S. 13 W. 270 vrs. S. 59 1/2 W. 476 vrs. S. 18 1/2 E. 353 vrs. S. 2 1/2 W.
241 vrs. S. 34 E. 247 vrs. and S. 21 E. to the S.E. cor. of the M. Ellis Survey and the N.E.

cor. of the T.N. Jones Survey. This point being also the N.W. cor. of M.A. Davey's M.F. Survey,
made for him in July 1925-A 36" Pine mkd. X for witness. Thence N. 82 E. across the Neches River
to a 20" water Oak blazed on 4 sides for the N.E. cor. of said Davey M.F. Survey, on the E.
bank of said River and in the W. line of Cherokee County. Thence up said Neches River and the
west boundary line of Cherokee county as follows: N. 23 W. 315 vrs. N. 24 1/2 W. 300 vrs. N. 17 1/4
E. 120 vrs.; N. 27 W. 271 vrs. N. 59 E. 342 vrs. N. 40 1/2 E. 200 vrs.; N. 10 E. 302 vrs. N. 50
W. 193 vrs. N. 71 1/2 W. 455 vrs.; N. 23 W. 487 vrs. N. 33 1/4 W. 656 vrs. N. 36 W. 1360 vrs.;
N. 59 3/4 W. 410, crossed a spring branch; N. 41 W. 200 vrs. N. 9 1/2 W. 176 vrs. N. 11 W. 241 vrs.
N. 31 3/4 W. 179 vrs. N. 51 1/2 W. 192 vrs. N. 86 1/2 W. 169 vrs.; N. 78 1/2 W. 189 vrs. S. 61 1/2 W.
378 vrs. N. 46 1/2 W. 1702 vrs.; N. 26 3/4 W. 131 vrs. N. 6 1/2 E. 230 vrs. N. 35 E. 530 vrs. N.
21 1/2 W. 321 vrs. and crossed spring branch N. 7 1/2 W. 481 vrs.; N. 50 1/2 E. 365 vrs. N. 5 W.
180 vrs. N. 23 3/4 W. 193 vrs.; N. 20 1/4 E. 405 vrs. crossed spring branch, N. 13 1/4 E. 445
vrs.; N. 25 E. 617 vrs. N. 41 1/2 E. 425 vrs. N. 11 E. 598 vrs. N. 13 1/2 W. 196 vrs. N. 25 1/2 W.
283 vrs. N. 20 E. 210 vrs.; N. 25 1/2 E. 500 vrs. Jacksonville and Neches Bridge. N. 10 1/2 E.
162 vrs. N. 2 1/2 W. 160 N. 47 W. 200 vrs. N. 76 W. 505 vrs. N. 35 W. 126 vrs. N. 12 W. 180
vrs. to a stake in the South margin of the I. & G. N. Ry. R. on the E. bank of said Neches River,
and in the West boundary of Cherokee County. Thence S. 82 1/2 W. across said River and with
said Rail Road-70 vrs. to the place of beginning and containing 250 acres of the bed of the
said Neches River, more or less.

SURVEYED April 2-4 & 5, 1927. Recorded in Book G. on pages-304 & 305
of the Surveyors' Records of Anderson County Texas.

M. B. Chamber
County Surveyor, Anderson County, Texas.

RECORDED this the 7 day of April, 1927 in Book 1 on Page 72
of the Surveyor's Records of Cherokee County Texas.

L. F. Moore
County Surveyor, Cherokee County, Texas.

COUNT ER # 12807
Anderson Co. S. E. 1/4 1/2 1/2

Original
~~File~~ no. 17442.

Rec'd 4/27/27
Ramo

7

THE STATE OF TEXAS

ANDERSON COUNTY

"CORRECTED" Field Notes of a survey of

a section of the Neches River bed in between Anderson and Cherokee Counties, Texas, made for Lucius D. Henderson of Poynor, Texas, by virtue of his application filed with the County Surveyor of Anderson County, Texas, on the 19th day of March 1927, at 10:00 o'clock A. M. which said application is of record in Book I, on page 14, of the Surveyor's Records of Anderson County, Texas, at Palestine, Texas, Said survey is situated about 18 miles N. E. of Palestine, and about 18 miles N. W. of Rusk, County Sites of Anderson and Cherokee Counties, and is described as follows:

Beginning at a stake in the S. margin of the I.-& G. N. Railway right-of-way and on the West bank of said river in the E. boundary of Anderson County and in the E. boundary of the L. O. Herrington Survey. Thence down the Neches River following the West bank of same with its' meanders as follows, to-wit:

S. 3 E. 257 vrs., S. 22½ E. 110 vrs., S. 53½ E. 133 vrs.
N. 89 E. 287 vrs., S. 75 E. 140 vrs., S. 46 E. 100 vrs.,
S. 24 E. 193 vrs. and pass the N. E. corner of the John H. Scaggs Survey and the S. E. corner of said Herrington Survey continuing with said river S. 28 W. 148 vrs., S. 29½ W. 178 vrs.,
S. 21 W. 500 vrs., S. 10 W. 200 vrs., S. 6 E. 131 vrs.,
S. 26 E. 97 vrs., S. 34½ E. 112 vrs., S. 13½ E. 138 vrs. pass S. E. corner said Scaggs, and N. E. corner Wm. B. Harrison Surveys. Thence S. ~~24~~ ²⁶ W. 265 vrs., S. 1 W. 175 vrs., S. 30 W. 178 vrs.
S. 51½ W. 169 vrs., S. 50 W. 308 vrs., S. 26 W. 366 vrs.,
S. 23 W. 355 vrs., pass S. E. corner said Harrison and the N. E. corner of the Wm. Gibson Surveys. Thence with river S. 6½ W. 350 vrs
S. 14½ W. 517 vrs., S. 26 E. 348 vrs., S. 26½ W. 122 vrs.,
S. 57 W. 275 vrs., S. 5 E. 162 vrs., S. 16 E. 175 vrs., S. 1 E. 192½ vrs. to S. E. corner said Gibson and N. E. corner John Blair Surveys. Thence with river S. 12 W. 225 vrs., S. 36 W. 340 vrs., S. 17 W. 268 vrs.
S. 1½ E. 256 vrs., S. 4½ E. 261 vrs., S. 46½ E. 428 vrs.,
S. 43½ E. 558 vrs., S. 51 E. 647 vrs., E. 141 vrs., and pass the West corner M. A. Davey Survey continuing N. 57½ E. 568 vrs.

S. 77 E. 264 vrs., S. 46 E. 136 vrs., S. 28 $\frac{1}{2}$ E. 150 vrs. to the East corner of said Davey and the N. E. corner of the Samuel Davis League, continuing with said river S. 13 E. 201 vrs., S. 4 $\frac{1}{2}$ E. 226 vrs. S. 52 E. 282 vrs., S. 76 E. 219 vrs., S. 53 E. 200 vrs., S. 37 $\frac{1}{2}$ E. 464 vrs., S. 35 E. 978 vrs., S. 35 $\frac{1}{2}$ E. 293 vrs., S. 27 E. 418 vrs. to S. E. corner said Davis and N. E. Corner M. Ellis Surveys, continuing with said river S. 7 $\frac{1}{2}$ E. 190 vrs., S. 49 E. 238 vrs., S. 77 E. 438 vrs., S. 44 E. 143 vrs., S. 13 W. 260 vrs., S. 57 W. 440 vrs., S. 17 E. 395 vrs., S. 3 $\frac{1}{2}$ W. 238 vrs., S. 38 E. 241 vrs., S. 21 $\frac{1}{2}$ E. 250 vrs., to the S. E. corner of the M. Ellis Survey and the N. W. corner of M. A. Davey M. F. Survey, 36" pine mkd. \times for witness tree.

Thence N. 62 E. 77 vrs. crossing said river to a 20" W. O. blazed on four sides for the N. E. corner of said Davey M. F. Survey, and on the E. bank of said Neches River in the W. boundary line of Cherokee County.

Thence up said river along the E. bank of same and the W. boundary of Cherokee County as follows: N. 11 W. 206 vrs., N. 35 W. 238 vrs., N. 5 $\frac{1}{2}$ W. 241 vrs., N. 25 W. 300 vrs., N. 49 E. 560 vrs., N. 1 W. 362 vrs., N. 65 W. 231 vrs., N. 73 W. 462 vrs., N. 17 W. 180 vrs. to a point 96-7/10 vrs. East of the N. E. corner of M. Ellis Survey of Anderson County, continuing with said river N. 24 W. 409 vrs., N. 37 $\frac{1}{2}$ W. 296 vrs., N. 34 $\frac{1}{2}$ W. 726 vrs., N. 36 $\frac{3}{4}$ W. 668 vrs., N. 39 W. 396-7/10 vrs., N. 68 W. 368 vrs., N. 45 W. 100 vrs., N. 10 W. 292 vrs. to a point 90 vrs. E. of the N. E. corner of the Samuel Davis League, continuing with said river N. 25 $\frac{1}{2}$ W. 180 vrs., N. 49 W. 247 vrs., N. 84 W. 260 vrs., S. 59 $\frac{1}{2}$ W. 580 vrs., N. 83 W. 118 vrs., N. 52 W. 580 vrs., N. 43 W. 575 vrs., N. 48 $\frac{1}{2}$ W. 360 vrs., N. 4 W. 470 vrs., N. 13 E. 245 vrs., N. 33 E. 365 vrs., N. 12 E. 248 vrs. to a point 43-6/10 vrs. E. of the N. E. corner of the John Blair Survey, continuing with said river N. 9 W. 475 vrs., N. 42 E. 388 $\frac{1}{2}$ vrs., N. 11 $\frac{1}{2}$ W. 277 vrs., N. 23 W. 195 vrs., N. 17 E. 398 vrs., N. 7 $\frac{1}{2}$ E. 356 vrs. to a point 50 vrs. E. of the N. E. corner of the Wm. Gibson Survey, continuing N. 25-5/6 E. 471 $\frac{1}{2}$ vrs., N. 26 E. 210 vrs., N. 49 E. 480 vrs., N. 35 E. 180 vrs., N. 2 E. 220 vrs., N. 11 E. 270 vrs. passing

— 71-4/10 vrs. E. of the N. E. corner of Wm. B. Harrison Survey, continuing with said river N. 19 W. 311 vrs., N. 25 W. 210 vrs., N. 20 E. 253 vrs., N. 27 E. 325 vrs., N. 24 E. 269 vrs., N. 14 E. 140 vrs. to a point 40 vrs. E. of the N. E. corner of the John H. Scaggs Survey, continuing with said river N. 8 W. 200 vrs., N. 33½ W. 142 vrs., N. 70½ W. 156 vrs., N. 86½ W. 265 vrs., N. 64½ W. 148 vrs., N. 14½ W. 151 vrs., N. 7½ W. 112 vrs. to a stake on the bank of said Neches River and in the S. margin of the I.-G. N. Railway right-of-way and in the West boundary line of said Cherokee County, Texas, and being also the West line of the P. O. Lumpkin Survey. Thence ~~N.~~ 82½ W. with said Railway right-of-way 70 vrs. to the place of beginning containing ²⁵⁴~~254~~/₄ acres of land.

Surveyed April 2, 4, 5, & 12, 1927.

D. T. Crittenden
John Jackson Chain Carriers.

W. B. Chambers
County Surveyor.

Handwritten notes:
 11/11/27
 11/12/27
 11/13/27
 11/14/27
 11/15/27
 11/16/27
 11/17/27
 11/18/27
 11/19/27
 11/20/27
 11/21/27
 11/22/27
 11/23/27
 11/24/27
 11/25/27
 11/26/27
 11/27/27
 11/28/27
 11/29/27
 11/30/27
 12/1/27
 12/2/27
 12/3/27
 12/4/27
 12/5/27
 12/6/27
 12/7/27
 12/8/27
 12/9/27
 12/10/27
 12/11/27
 12/12/27
 12/13/27
 12/14/27
 12/15/27
 12/16/27
 12/17/27
 12/18/27
 12/19/27
 12/20/27
 12/21/27
 12/22/27
 12/23/27
 12/24/27
 12/25/27
 12/26/27
 12/27/27
 12/28/27
 12/29/27
 12/30/27
 12/31/27

I, W. B. Chambers, Surveyor of Anderson County, Texas, do certify that the above survey was made by me on the ground, and according to law, that the limits, boundaries and corners, with the marks, natural and artificial are truly described in the foregoing field notes just as I found them on the ground, and that they are recorded in my office in Book G, on page 312 and 313, of the Surveyor's Records of Anderson County, Texas. *April 25th 1927 at 10 o'clock P.M.*

W. B. Chambers

County Surveyor of Anderson County, Texas.



Recorded in Surveyor's Records of Cherokee County in Book 1
 Page 12, this the 26th of April 1927.

L. F. Moore

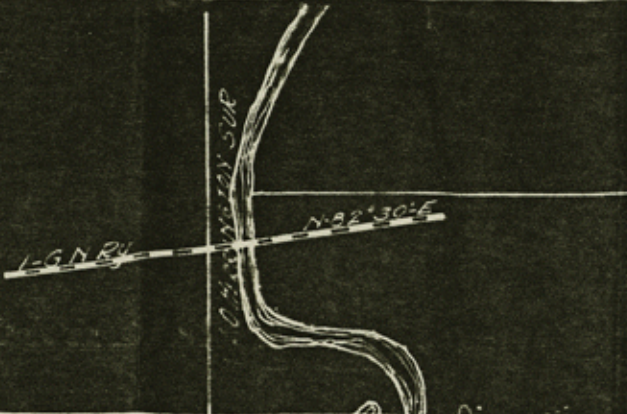
County Surveyor of Cherokee County, Texas.

7

9M. 11897 (7)
App. 17442
~~Committed~~
Full Note
Filed 4/27/29
J. J. Robinson
Com
By Ram
C.H.

Full note correct
4/28/27
Blucher





W. H. SCRAGGS SUR.

P.O. LUMPKIN - SUR.

W. B. HARRISON SUR.

W. GIBSON SUR.

JOHN BLAIR SUR.

ANDERSON CO.

M. DAVEY SUR.



CHEROKEE COUNTY

W^m GIBSON SUR.

CHEROKEE COUNTY

JOHN BLAIR SUR.

ANDERSON COUNTY

SAMUEL DAVIS SUR.

M. A. DAVEY SUR.

Wells Creek

M. ELLIS SUR.

I, W.B. Chambers, Surveyor of Anderson County Texas, do certify that the above survey was made by me on the ground, and according to law, and that this plot is a true and correct representation of the conditions just as I found them on the ground, and said plot & field notes of same are of record in Book G - page 312-313 of the surveyors records of Anderson County Tex. Surveyed April 2-4 5-12-1927

W.B. Chambers, Co. Surveyor of Anderson County

PLOT SHOWING SECTION OF NECHES RIVER BED. - SURVEYED FOR LUCIUS. D. HENDERSON

Scale = 600 Yds = 1".

T.M. JONES - SUR.

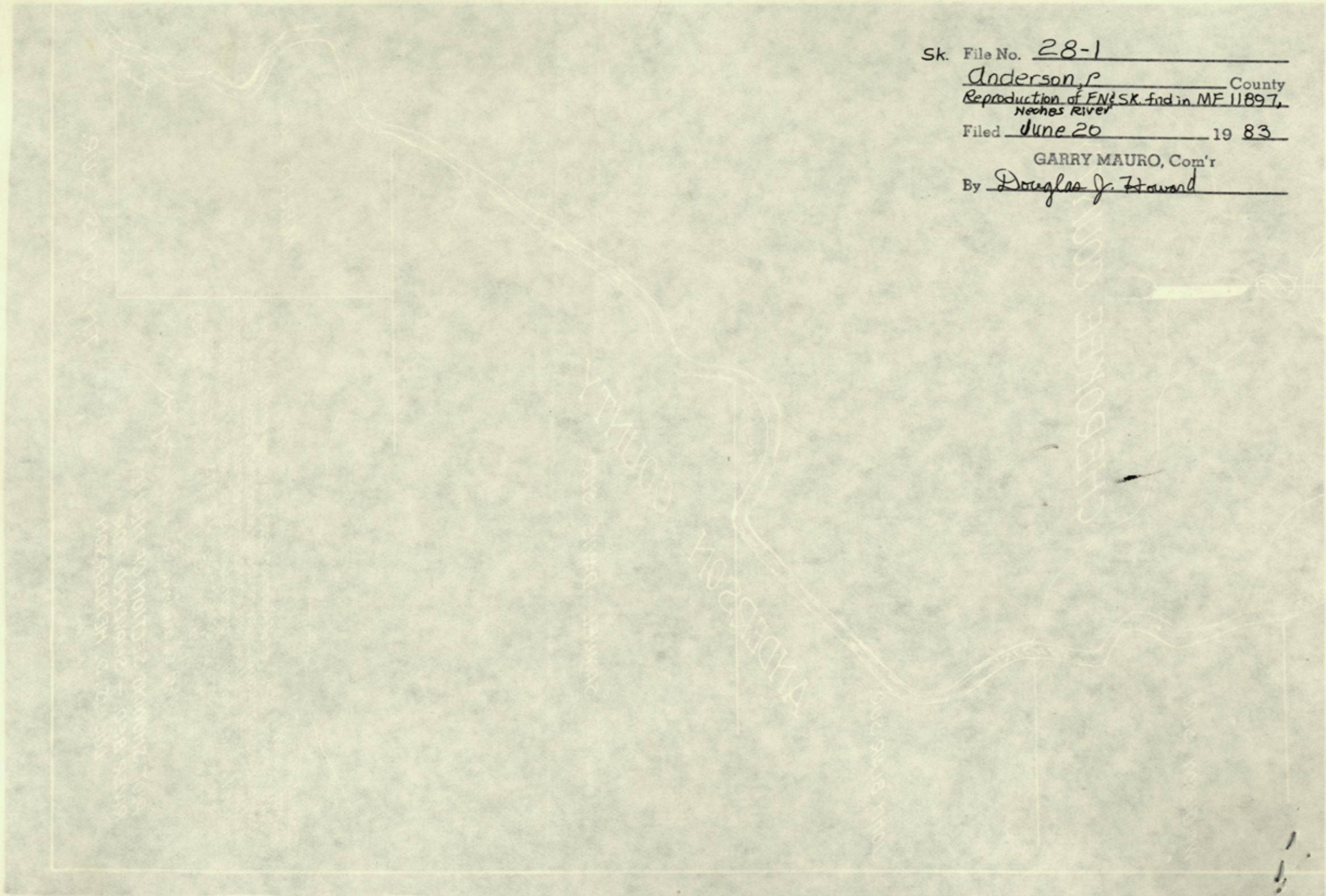
Sk. File No. 28-1

Anderson, P County
Reproduction of FN & SK. find in MF 11897,
Neches River

Filed June 20 19 83

GARRY MAURO, Com'r

By Douglas J. Howard



Counter # 78675

Anderson Co. Sk. File #28-1