

To Commissioner, General Land Office:

Portion of Block A-31:

The west boundary of Sections 25, 16, and 15 is three equal miles running from D. Boone's original iron pipe at southwest corner Section 25 to Pat Stanford's iron pipe at the patented southeast corner of South 240 acres of Section 7, Block A-30. The west boundary Section 6 runs from Stanford's southeast corner Section 7, Block A-30, to J.W. Luchini's iron rod with marked aluminum cap at the patented southwest corner Section 5, Block A-31.

The north boundary Sections 6, 7, and 8 is three equal miles from Luchini's patented southwest corner Section 5 to his patented southeast corner Section 3. The north boundary Section 9 runs from Luchini's southeast corner Section 3 to his patented northwest corner Section 10. All corners of Section 2 are Luchini's patented corners of adjoining surveys.

The north boundary Sections 15, 14, 13, and 12 is four equal miles from Stanford's southeast corner Section 7, Block A-30, to Luchini's patented southwest corner Section 10.

The east boundary Sections 12 and 19 is determined by equal proration of $2\frac{1}{2}$ miles from Luchini's southwest corner Section 10 to R.B. Smitherman's patented northwest corner of $SW\frac{1}{4}$ Section 21.

South boundary Sections 25, 24, 23, and 22 is four equal miles from Boone's original southwest corner Section 25 to Smitherman's southwest corner Section 21. The south boundary Section 21, from Smitherman's southwest corner Section 21 to A.W. Harrison's re-location of the southeast corner Section 21 in his survey for patent of $N\frac{1}{4}$ Section 5, Block A-32, checks very closely with distance and bearing of the four sections west.

Other corners in Block A-31 were determined by joining corners described above.

The patented southeast corner Section 5, the south corners of the $N\frac{1}{4}$ Section 7, and the south corners of the $N\frac{1}{2}$ Section 8, were not on the ground in the positions called for, and our corners were set to conform as closely as possible with these called positions.

Portion of Block A-37:

The north boundary Block A-37 is the south boundary Block A-31 described above.

The west boundary Block A-37 is five equal miles running between D. Boone's original iron pipes at the west block corners.

C.A. Tubbs' patented northeast corner Section 7 is in reasonable position in relation to original corners, and was used as the southeast corner Section 4. The south boundary Sections 4 and 5 is two equal miles of 1894.61 varas each. The patent of Section 7 calls for two iron pipes at the north corners, with no connecting ties to original or resurvey corners. The north boundary Section 7 was patented as 1904 varas, is 1908.65 varas on the ground, and is encroaching on Section 6 by about 14 varas.

Portion of Blocks A-30 and A-38:

The west boundary of these two blocks was described in previous report on east boundary of Blocks A-29 and A-39. The east boundary is same as west boundary Blocks A-31 and A-37 described above. East-west lines were constructed in these two blocks by proration of D. Boone's original calls on east and west side.

The "square" sections in east tiers of these two blocks were made called distance in east-west direction, and the excess placed in the trapezoidal sections along the west block lines. This pattern was used

in resurveys and patents issued in Sections 5 $\frac{1}{2}$ and 8, Block A-30. Also, D. Boone's distances are about equally excessive or short, and his called distances are a fair average. His west boundary of these two blocks is varying quite a bit in direction, and any attempt to prorate called east-west lines in these blocks would create north-south lines changing direction at each section corner.

September 15, 1979

Otha Draper

Otha Draper
Licensed State Land Surveyor

RECEIVED
SEP 19 1979
General Land Office

REPORT ON CONSTRUCTION OF EAST BOUNDARY OF BLOCKS A-29 AND A-39, PSL, ANDREWS COUNTY, TEXAS, IN SURVEY OF FEB.-APR., 1979

To Commissioner, General Land Office:

Block A-29:

In 1912, Boyd Douglas, County Surveyor of Andrews County, set a marked iron pipe for the southwest corner of Section 5 1/2 and the northwest corner Section 8, Block A-30, making a direct tie to D. Boone's original iron pipe at the northeast corner Section 1, Block A-29, which apparently has been destroyed.

Our construction of east boundary Block A-29 is a line from D. Boone's original iron pipe at the southeast corner Block A-29 to Boyd Douglas' iron pipe at the northwest corner Section 8, Block A-30, and extended north 1353.0 varas to the position of D. Boone's northeast corner of Block A-29, this distance being divided into five equal sections for the east boundary Block A-29.

Block A-39:

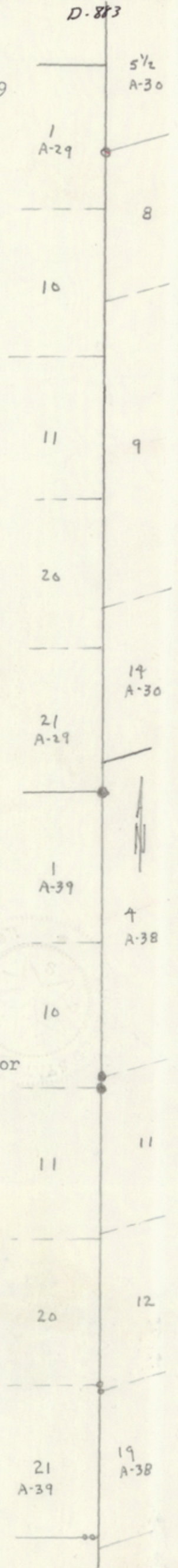
The East 120 feet of that portion of Section 21, Block A-39, lying adjacent to Section 19, Block A-38, was dedicated to Andrews County in 1957 as a public road. This description called for a 2" iron pipe at the southeast corner Section 21, Block A-39, and a 3/4" iron pipe at the northwest corner Section 19, Block A-38. The 2" iron pipe at southeast corner Section 21 has been destroyed by a field, but is referenced by a spike in center of paved road 21.6 varas west of corner, and a 1 1/4" iron pipe in west boundary fence of road 43.2 varas west of corner. A 1 1/4" iron pipe in place N00°13'43"E, 59.7 varas from the northwest corner Section 19, and N00°13'43"E, 1901.15 varas from the southeast corner Section 21 was used for the northeast corner Section 21 and southeast corner Section 20, Block A-39.

The east boundary Sections 11 and 20 is a line from 1 1/4" iron pipe at the southeast corner Section 20 to D. Boone's original stone mound at the northeast corner Section 11 and southeast corner Section 10, divided into two equal miles.

The east boundary Sections 1 and 10 is a line from Boone's original stone mound at the southeast corner Section 10 to Boone's original iron pipe at the northeast corner Section 1, divided into two equal miles.

July 14, 1979

Otha Draper
Otha Draper
Licensed State Land Surveyor



REPORT ON CONSTRUCTION OF EAST BOUNDARY OF BLOCKS A-29 AND A-39, PSL, ANDREWS COUNTY, TEXAS, IN SURVEY OF FEB.-APR., 1979

To Commissioner, General Land Office:

Block A-29:

In 1912, Boyd Douglas, County Surveyor of Andrews County, set a marked iron pipe for the southwest corner of Section 5 1/2 and the northwest corner Section 8, Block A-30, making a direct tie to D. Boone's original iron pipe at the northeast corner Section 1, Block A-29, which apparently has been destroyed.

Our construction of east boundary Block A-29 is a line from D. Boone's original iron pipe at the southeast corner Block A-29 to Boyd Douglas' iron pipe at the northwest corner Section 8, Block A-30, and extended north 1353.0 varas to the position of D. Boone's northeast corner of Block A-29, this distance being divided into five equal sections for the east boundary Block A-29.

Block A-39:

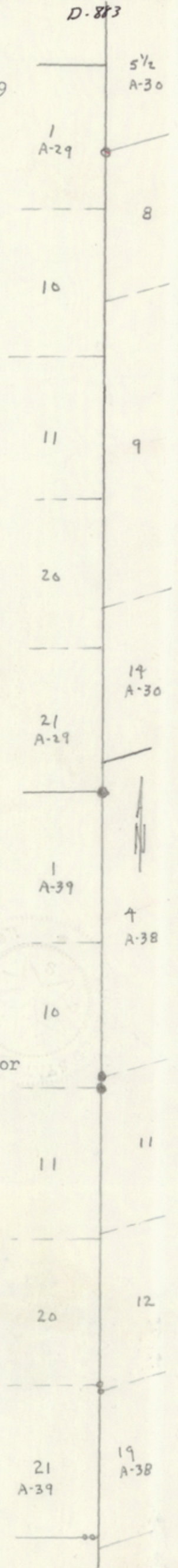
The East 120 feet of that portion of Section 21, Block A-39, lying adjacent to Section 19, Block A-38, was dedicated to Andrews County in 1957 as a public road. This description called for a 2" iron pipe at the southeast corner Section 21, Block A-39, and a 3/4" iron pipe at the northwest corner Section 19, Block A-38. The 2" iron pipe at southeast corner Section 21 has been destroyed by a field, but is referenced by a spike in center of paved road 21.6 varas west of corner, and a 1 1/4" iron pipe in west boundary fence of road 43.2 varas west of corner. A 1 1/4" iron pipe in place N00°13'43"E, 59.7 varas from the northwest corner Section 19, and N00°13'43"E, 1901.15 varas from the southeast corner Section 21 was used for the northeast corner Section 21 and southeast corner Section 20, Block A-39.

The east boundary Sections 11 and 20 is a line from 1 1/4" iron pipe at the southeast corner Section 20 to D. Boone's original stone mound at the northeast corner Section 11 and southeast corner Section 10, divided into two equal miles.

The east boundary Sections 1 and 10 is a line from Boone's original stone mound at the southeast corner Section 10 to Boone's original iron pipe at the northeast corner Section 1, divided into two equal miles.

July 14, 1979

Otha Draper
Otha Draper
Licensed State Land Surveyor



in reserves and patents issued in Section 24 and 8, Block A-30. Also, D. Boone's distance are about equally excessive or short, and his called distance are a fair average. His west boundary of these two blocks is varying quite a bit in direction, and any attempt to promote called east-west lines in these blocks would create north-south lines, changing direction at each section corner.

September 15, 1979



Olga Dwyer
Olga Dwyer
Licensed State Land Surveyor

RECEIVED
SEP 19 1979
General Land Office



WORLD TOWN
2 1/2 COTTON

To Commissioner, General Land Office:

Portion of Block A-31:

The west boundary of Sections 25, 26, and 27 is three equal miles running from D. Boone's original iron pipe at southwest corner Section 25 to Pat Stanford's iron pipe at the patented southeast corner of Section 25. The west boundary of Section 26 runs from Stanford's southeast corner Section 26, Block A-30, to J.W. Luchini's iron rod with marked aluminum cap at the patented southwest corner Section 26, Block A-31.

The north boundary Sections 26, 27, and 28 is three equal miles from Luchini's patented southeast corner Section 26 to his patented southeast corner Section 27. The north boundary Section 27 runs from Luchini's southeast corner Section 27 to his patented northwest corner Section 27. All corners of Section 27 are Luchini's patented corners of adjoining surveys.

The north boundary Sections 12, 13, 14, 15, and 16 is four equal miles from Stanford's southeast corner Section 12, Block A-29, to Luchini's patented southwest corner Section 10.

The east boundary Sections 12 and 13 is determined by equal proportion of 2 1/2 miles from Luchini's southwest corner Section 10 to R.B. Switzer's patented northwest corner Section 21.

South boundary Sections 21, 22, and 23 is four equal miles from Boone's original southwest corner Section 21 to Switzer's southwest corner Section 21. The southwest corner of Section 21, from Switzer's southwest corner Section 21 to A.W. Harrison's re-location of the southeast corner Section 21 in his survey for patent of 1/4 Section 21, Block A-32, checks very closely with distance and bearing of the four sections west.

Other corners in Block A-31 were determined by joining corners described above.

The patented southeast corner Section 26, the south corners of the 1/4 Section 26, and the south corners of the 1/4 Section 27, were not on the ground in the positions called for, and our corners were set to conform as closely as possible with these called positions.

Portion of Block A-32:

The north boundary Block A-32 is the south boundary Block A-31 described above.

The west boundary Block A-32 is five equal miles running between D. Boone's original iron pipe at the west block corners.

C.A. Tubbs' patented northeast corner Section 27 is in reasonable position in relation to original corners, and was used as the southeast corner Section 27. The south boundary Sections 26 and 27 is two equal miles of 1904.61 yards each. The patent of Section 26 calls for two iron pipes at the north corners, with no connecting ties to original or resurvey corners. The north boundary Section 27 was patented as 1904 yards, is 1908.62 yards on the ground, and is encroaching on Section 26 by about 14 yards.

Portion of Blocks A-30 and A-33:

The west boundary of these two blocks was described in previous report on east boundary of Blocks A-29 and A-30. The east boundary is same as west boundary Blocks A-31 and A-32 described above. East-west lines were constructed in these two blocks by projection of D. Boone's original calls on east and west sides.

The "square" sections in east tiers of these two blocks were made called distance in east-west direction, and the excess placed in the triangular sections along the west block lines. This pattern was used

RECEIVED
SEP 19 1979
General Land Office