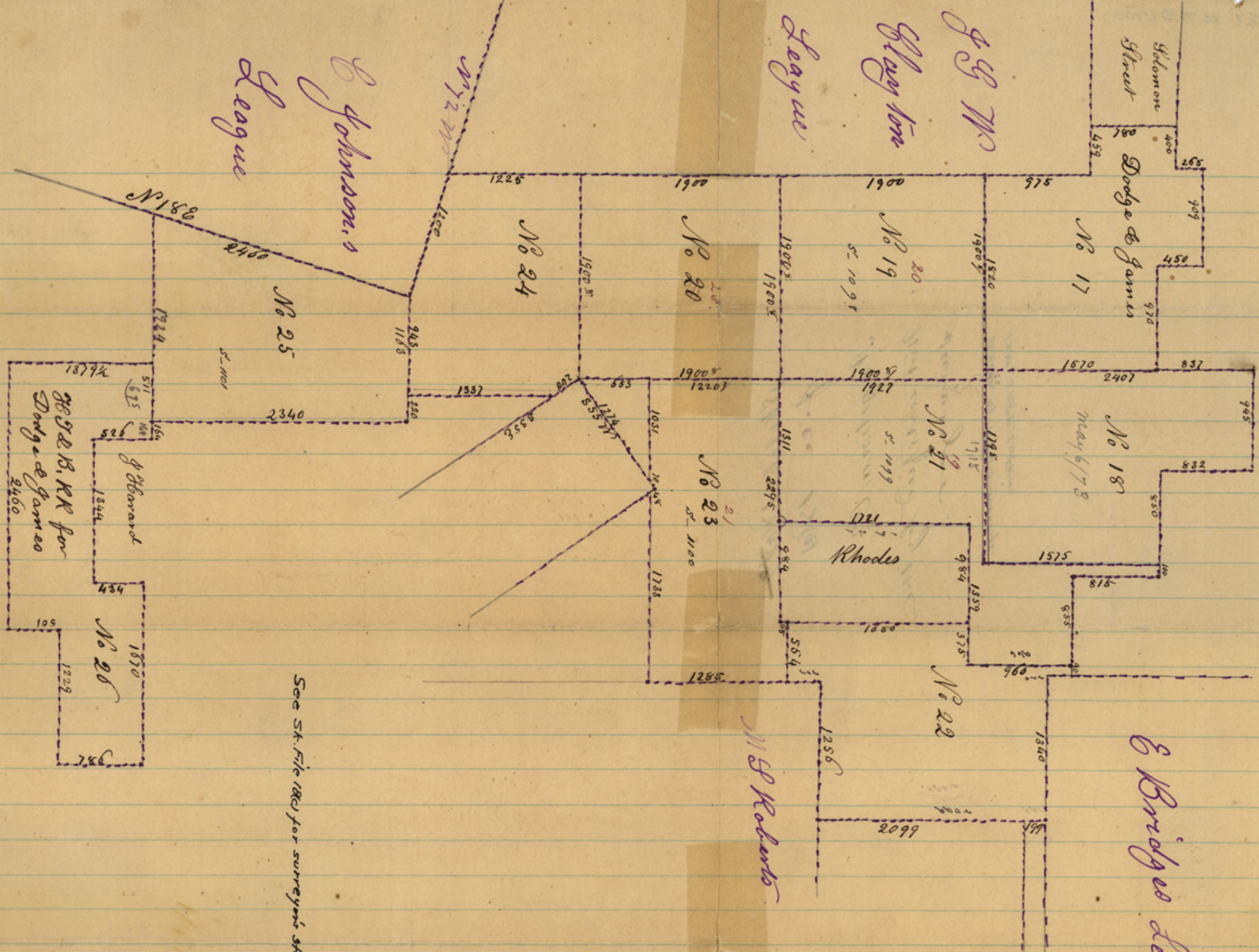


Sketch 18(a)
file 18(a)

Angelina Co.
Not certified by the
surveyor.

Sketch of H.F.B. Surveys.
13 Mi. S. 75° E. Lofkin

Filed Oct 31 1873
W. C. Brown
Surveyor



See Sk. File 180 for surveyor's statement

Plat of Surveys for Dodge & James
in Angelina County