

Plot Angelina Co  
Block No 1  
File 19.

filed Aug 9. 76.

*J. P. [unclear]*

West part

T & N. O. R. R. Co. Bk. 1.  
12 Mi. S. 40° W. Lufkin.

COUNTER # 13036

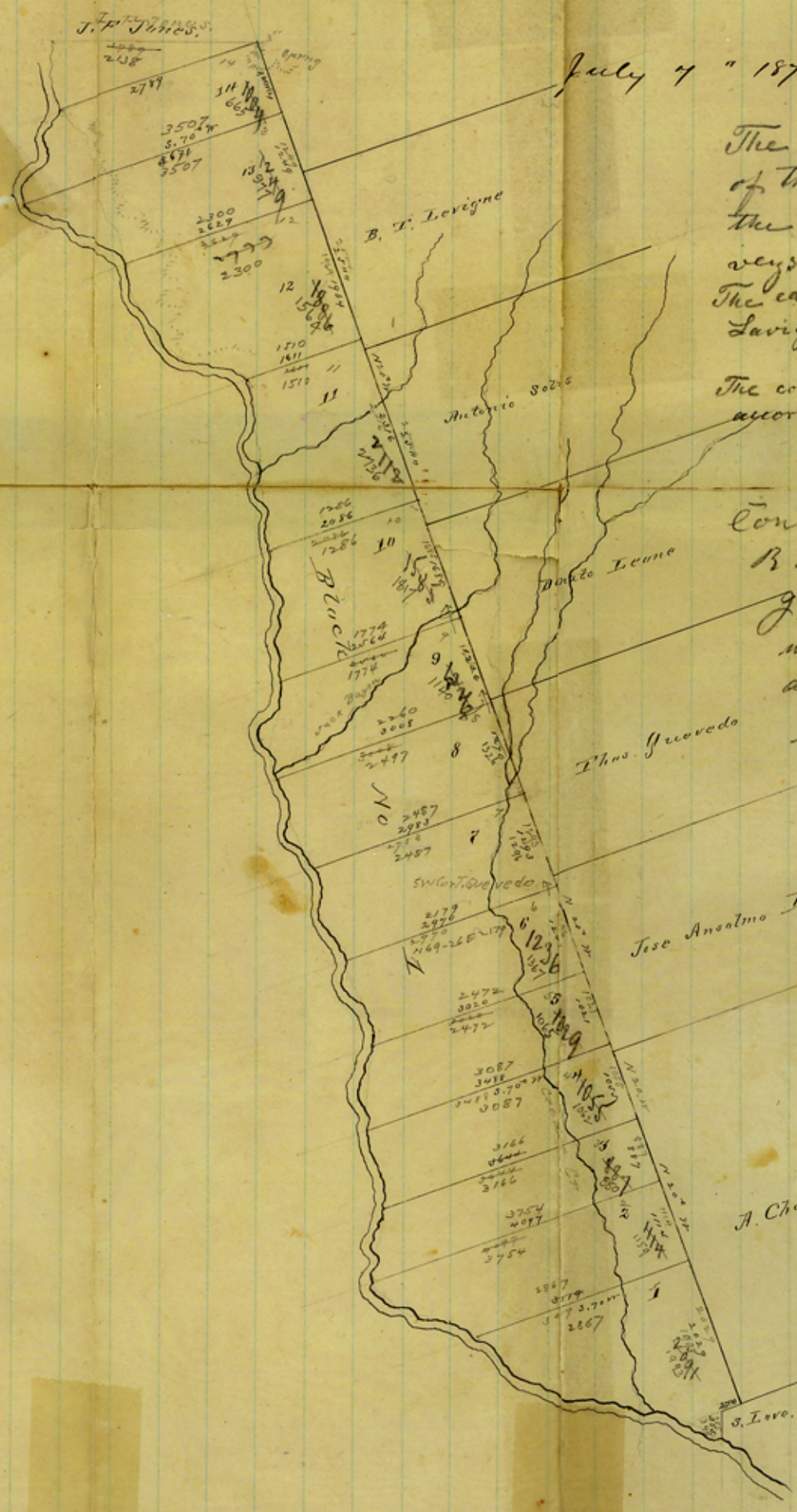


J. A. Gibson S. S. A. C. in and for the  
 County of Angelina hereby certify that  
 the within plot is a correct representation  
 of 14 surveys made in said County for  
 the T & A. O. R. R. Co and known as Block 1  
 that the courses and distances as noted  
 therein is correct and in accordance with  
 the work as done in the field and that  
 said 14 survey in no way conflict with  
 surveys previously made

Block 1.  
 Angelina

Jas D Gamm  
 Deputy Surveyor  
 A. Gibson  
 County Surveyor Angelina Co

July 7 " 1876



The length of the combined W. lines  
 of the Leagues surveys lying on the  
 the E line of the combined R.R. sur-  
 veys represents a length according to feet of 17500 vs.  
 The calculated distance between the P.D.  
 Lavigne League & J.F. Jones S.E. cor. is. 1674 vs  
 Total 19134 vs.

The combined E lines of the R.R. surveys  
 according to inscribed figures represents 19349 vs  
 a discrepancy of 215 vs.

Consequently Sect. No 14 of said  
 R.R. surveys will conflict with  
 J.F. Jones survey by 215 vs.  
 which is not shown in the sketch  
 and requires an explanation  
 Sept 14/82 This to paper