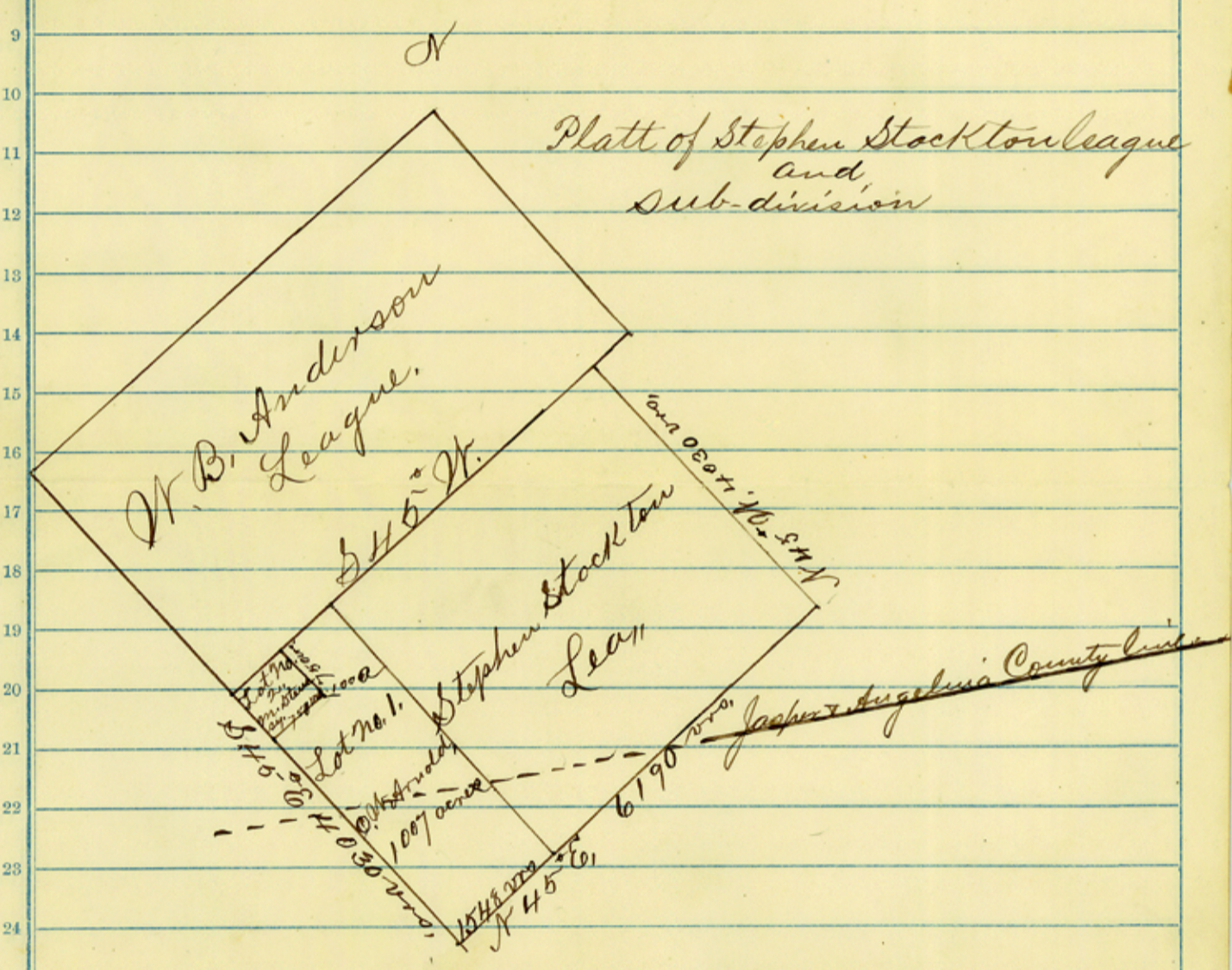


O. W. Arnold } In District Court
#1080 vs. } Angelina County Texas,
Mat Steussy. } July 8th A. D. 1890.

This day this Cause came on for trial and parties Plaintiff and Defendant appeared by Counsel, and by written agreement filed in this Cause, partition and divide the land described in Plaintiffs petition to wit: - Eleven Hundred and seven acres, a part of the Stephen Stockton league of land, said league being described as follows: situated in Angelina County Texas, and beginning at a mound on the S. E. B. line of the W. B. Anderson league from which mound a Black Oak 15" in dia with an old blaze about 3 or 3 1/2 feet long brs. S. 61. W. Thence S 45° W. with the S. E. B. line of said Anderson Lea, at 6190 vrs the S. W. Corner of same a mound from which a Red Oak 30" in dia brs N 80° E 13 vrs, Thence S 45° E. at 1942 vrs the County line at 4030 vrs Corner from which a pine 20" in dia bearing South. Thence N 45° E. at 3340. vrs. County line at 6190 vrs, the S. W. B. line of the Aaron Ashley league, Thence N 45° W. along the Ashley line at 1538 vrs the N. W. Cor. of same at 4030 vrs the beginning said 1107 acres herein partitioned is included within the following boundaries to wit: - Beginning at the N. W. Corner of said Stockton Lea, Thence S 45° E. with the S. W. B. line of said league 4030 vrs, to the S. W. Corner of same. Thence N 45° E.

with the S. B. line of said league 1548 to a corner on said line - Thence $N 45^{\circ} W$ 4030 vrs to the N. B. line of said league - Thence $S 45^{\circ} W$ 1548 vrs to the Beginning Corner, The portions thereof allotted to each of the parties to this suit are shown by the following plat.



Scale 2000 feet per inch.

1 The portions of said league of land as herein
2 divided, set apart and allotted to the parties
3 to this suit are described by metes and bounds
4 as follows: To, C. W. Arnold of Montgomery
5 County Texas, 1007 acres of said land —
6 Beginning at the S.W. Corner of said Stockton
7 league, Thence N45°E, 1548 vrs to Cor, on the
8 S. B. line of said lea, Thence N45°W, 4030 vrs
9 to the N. B. line of said lea, to Corner, Thence S45°W,
10 798 vrs to the N.E. Cor, of a 100 acre survey herein
11 set apart to Mat Steussy, Thence S45°E,
12 with said survey 750 vrs to Corner, Thence
13 S45°E, with said survey, 750 vrs, to the S. W. B.
14 line of said lea, Thence S45°E 3280, vrs with
15 said line to the beginning.

16 To Mat Steussy of Harris County Texas,
17 100 acres of said land: Beginning at the
18 N.W. Corner of said Stockton league —
19 Thence N45°W, 750 vrs to Corner, Thence S45°E,
20 750 vrs to Corner, Thence S45°W, 750 vrs to the
21 S. W. B. line of said league, Thence N45°W,
22 750 vrs with said line to the place of beginning.

23 It is therefore considered, ordered, adjudged ^{and}
24 decreed by the Court that the title in and to
25 the tract of land herein set apart to the
26 respective parties to this suit be vested in
27 such party to whom allotted as against
28 each of the other parties herein and that
29 such party have his writ of possession
30 therefor, It is further ordered that each of said
31 parties to this suit be divested of any and all
32 interest of in and to said Stephen Stockton

1 league of land as herein before described,
2 save as to the portion thereof herein allotted
3 and set apart to him. It is further ordered
4 that the plaintiff to this suit pay all costs
5 incurred herein for which execution
6 may issue.

7
8
9 The State of Texas, } J. G. M. Collins Clerk
10 County of Angelina } of the District
11 Court in and for said County of
12 Angelina, Texas, do hereby certify that
13 the foregoing 3 pages and upper portion of
14 this page of writing is a true and correct
15 copy of the decree of Partition in Cause
16 No 1080, wherein O. W. Arnold was
17 plaintiff and Mat Steussy was
18 defendant rendered by the said Court
19 on the 8th day of July A. D. 1890. and
20 entered in the minutes of said District
21 Court at the July term A. D. 1890. on the
22 12th day of July A. D. 1890. in minute
23 Book "F" on pages 226, 227 and 228.

24
25 In Testimony Whereof, Witness my
26 official signature and seal
of said Court at office in the
town of Homer Texas, on
This the 18th day of July A. D. 1890,
J. G. M. Collins Clerk
District Court Angelina
County Texas.



Angelina County.
Sketch File No. 27.

32 31 30 29 28 27 26 25 17 16 15 14 13 12 11 10 9 8 7 6 5 4 3 2 1

Decree
of
Court, filed in the
General Land Office

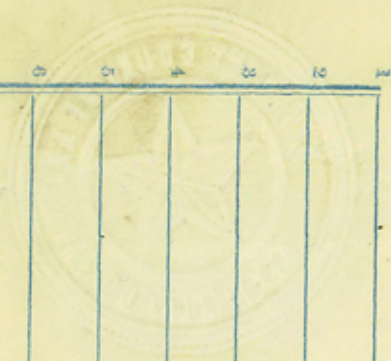
O.W. Arnold
No. 1080. vs
M. H. Steussy

July 23^d 1890.

R. C. Shelly
Chief Clerk.

Index
7/23/90
Shelly

\$ 2⁰⁰ Ram



COURT # 13077