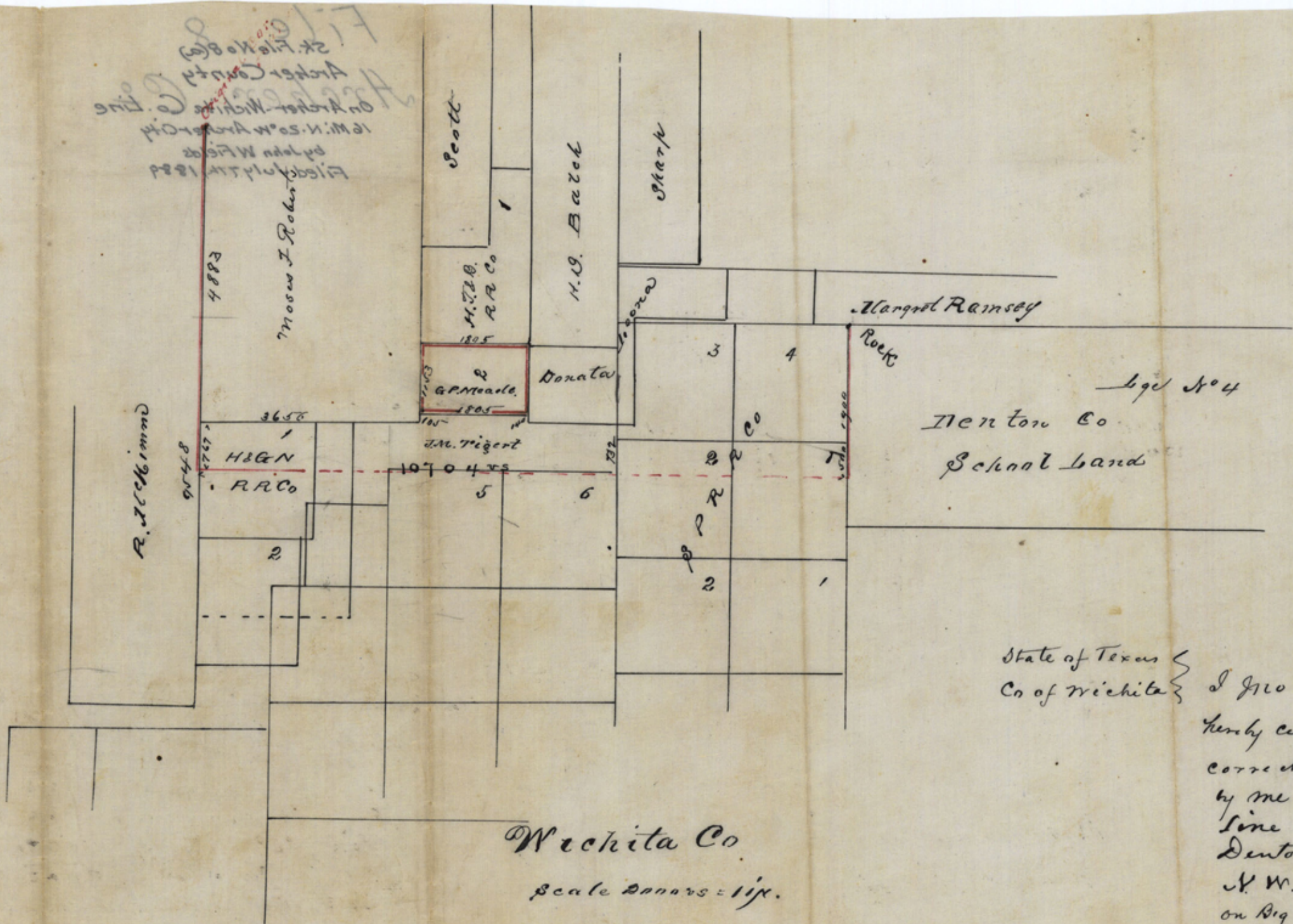


St. Files No 8 & 8(a)
Archer County

Contents:

1. Old Wrapper
2. St. File No 8.
3. St. File No 8(a).

Counter # 13639



Filed July 14 1889
 by John W. Fisher
 16 Mi. N. 50 W. Archer City
 On Archer-Wichita Co. line
 Archer County
 24 File No 8 (m)

Wichita Co
 Scale 20000 = 1 in.

State of Texas
 Co of Wichita

I Jno W Filed Special Surveyor
 hereby certify that the above sketch
 correctly represents a survey made
 by me on the ground, of a connecting
 line between the NW cor of Lge 4
 Denton Co School Land and the
 N.W. cor Moses J. Roberts Survey
 on Big Wichita River,

Jno W Filed
 Special Surveyor

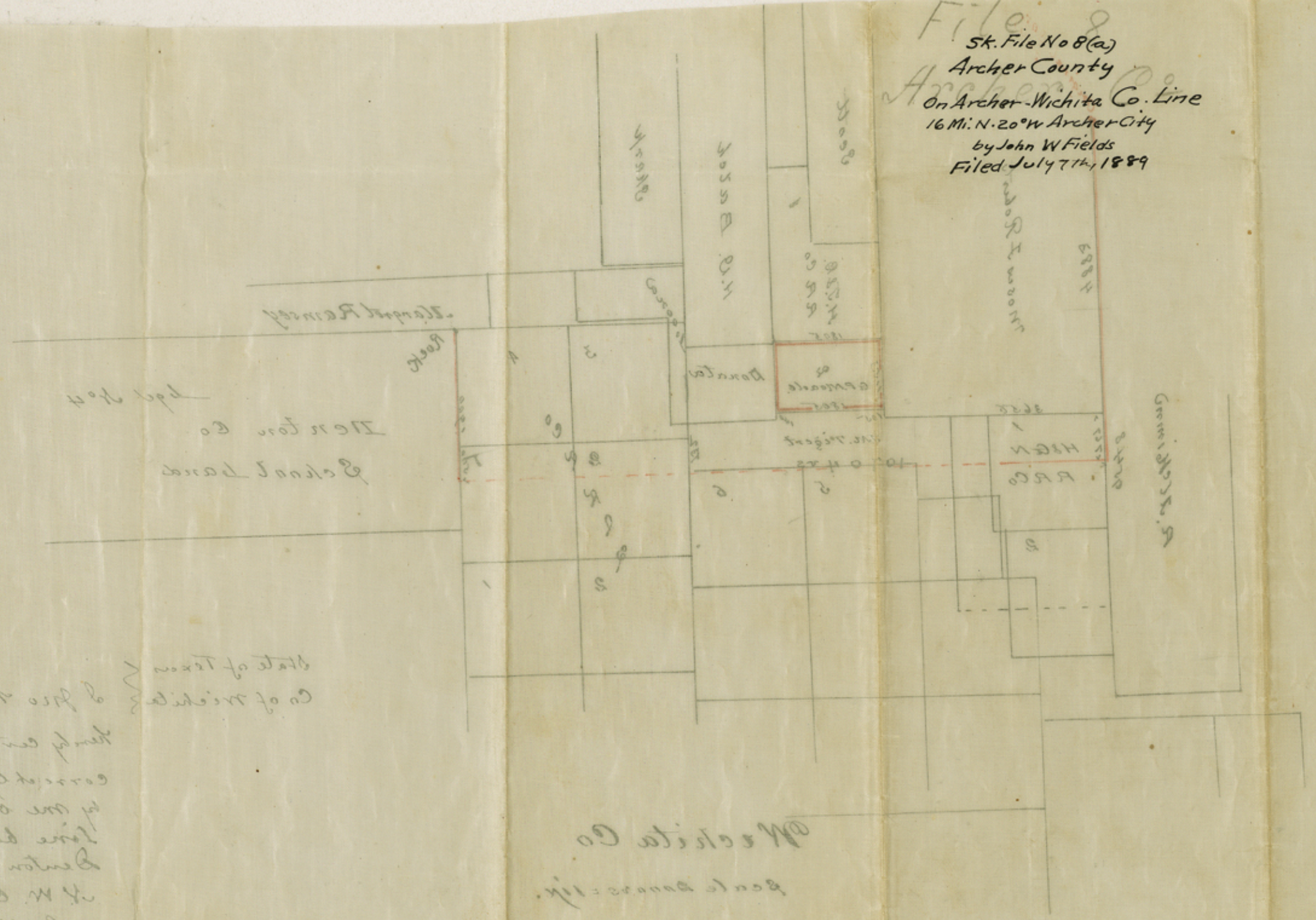
Filed in the General Land Office July 7th 1889

J. W. Miller
 Chief Clerk

Counter # 13640

Counter # 13641

File No 8
 Sk. File No 8(a)
 Archer County
 On Archer-Wichita Co. Line
 16 Mi. N. 20° W Archer City
 by John W Fields
 Filed July 7th, 1889



Wichita Co
 Scale 1/2 inch = 1 mile

State of Texas
 Co of Wichita
 of John W Fields Surveyor
 hereby certify that the above is a correct copy of a survey made by me on the ground of a corner line between the NW 1/4 of Sec 4, Section 30 School Land and the NW 1/4 of Sec 4, Section 30 Robert Survey on the Wichita River.

John W Fields
 Surveyor
 Filed in the Surveyors Office July 7th 1889
 J. W. Fields
 County # 13641