

File No. Sk. File 26  
Archer County

Filed \_\_\_\_\_ 1934  
J. EARL RUDDER, Com'r.

By \_\_\_\_\_

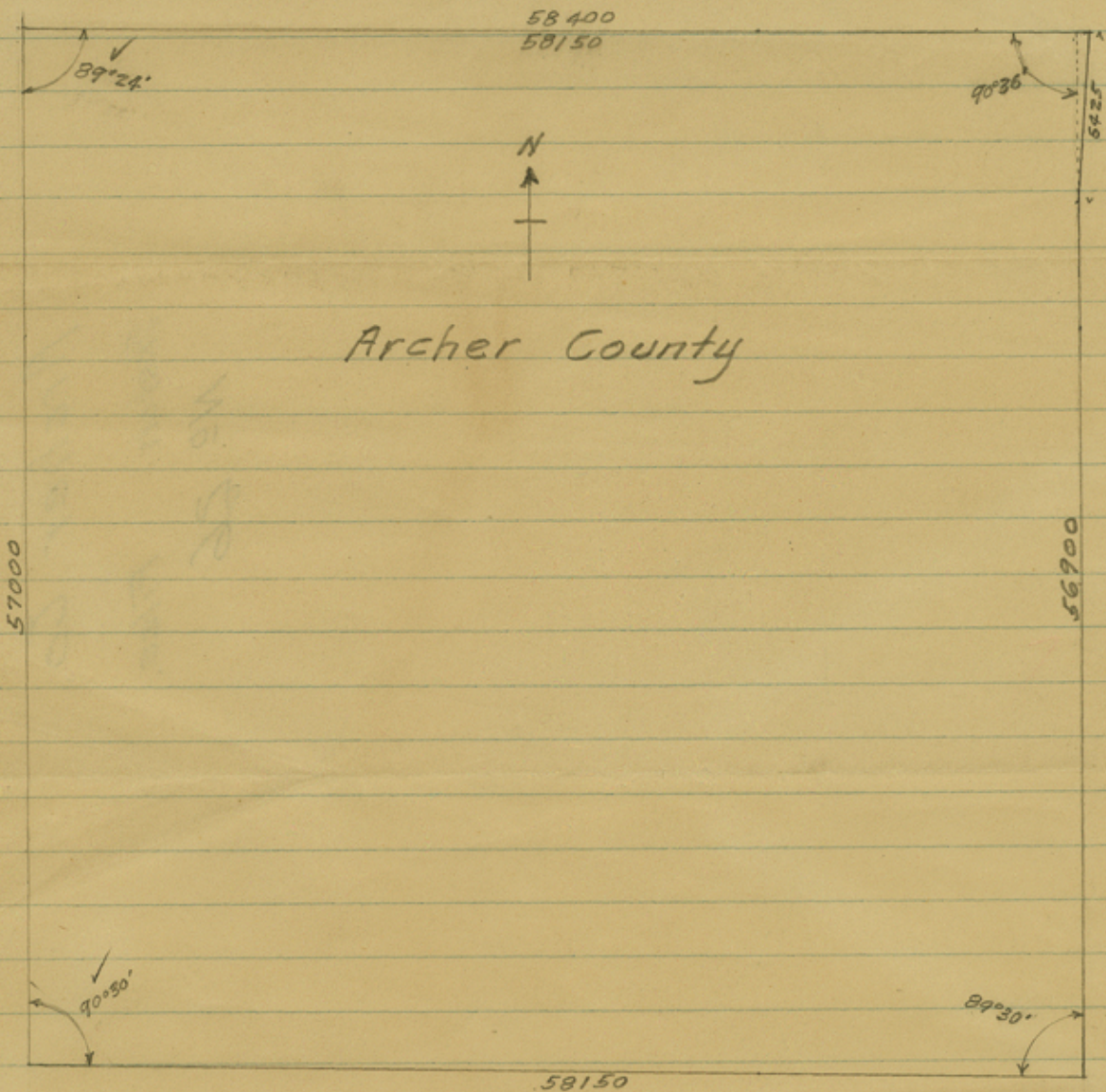
*Office sk. of county boundry.*

*by J. O. Barrow*

**J. EARL RUDDER**  
COMMISSIONER  
**GENERAL LAND OFFICE**  
AUSTIN 14, TEXAS



*Counter # 13663*



$$58150 \times 56950 = 3,311,642,500$$

$$125 \times 6425 = \underline{803,125}$$

$$3,312,445,625 \text{ sq. ft.}$$

$$586,751.26 \text{ Ac.}$$

$$916.80 \text{ sq. mi.}$$

*Checked  
Clark*

*J. Harrow*  
12/20/34

Counter # 13664