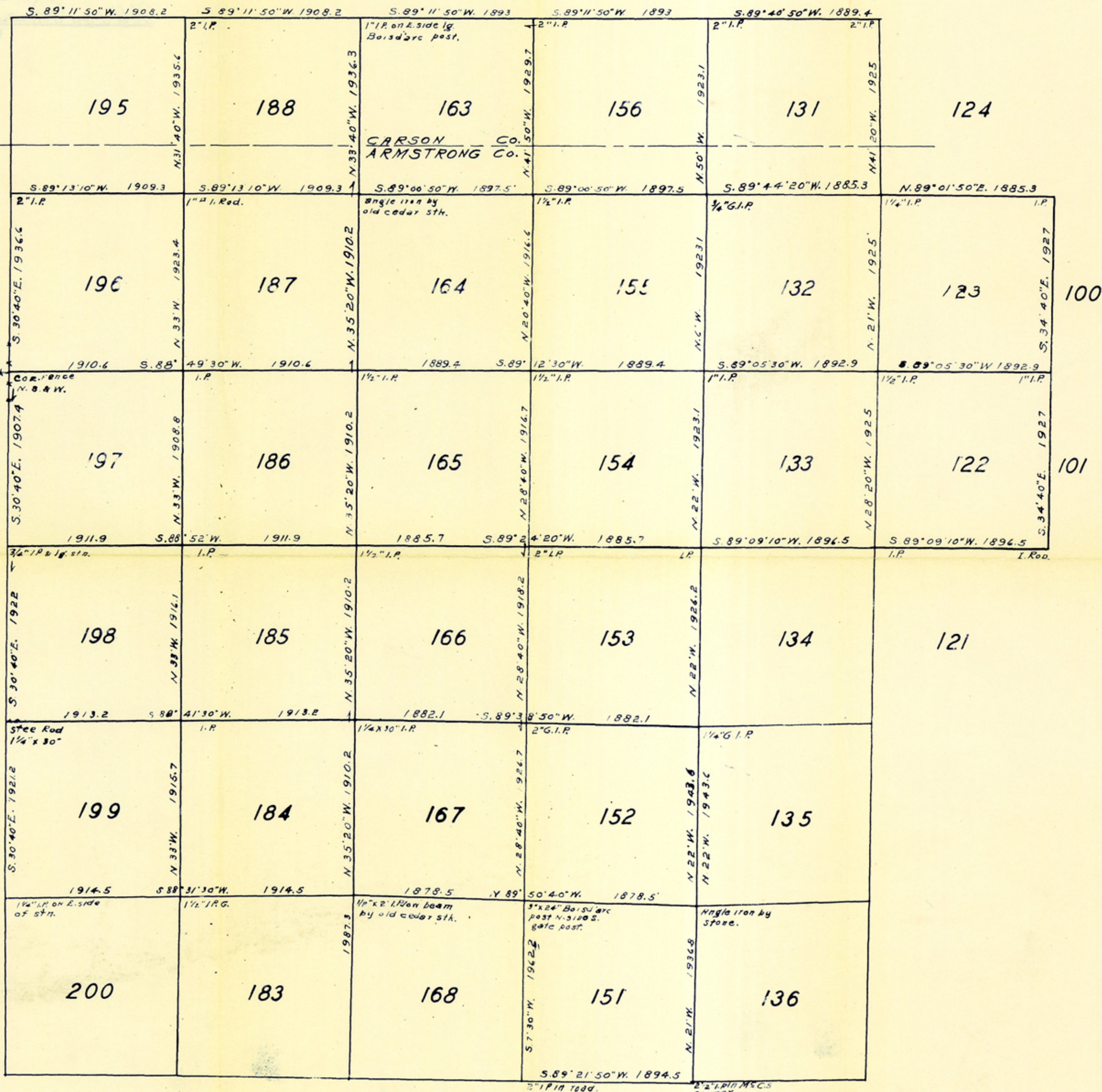


RECEIVED  
 JAN 13 1951  
 PREPARED TO SCHOOL

N

A PART OF BLOCK B 3  
 IN  
 CARSON & ARMSTRONG COS  
 TEXAS.



THE STATE OF TEXAS.  
 COUNTY OF ARMSTRONG.

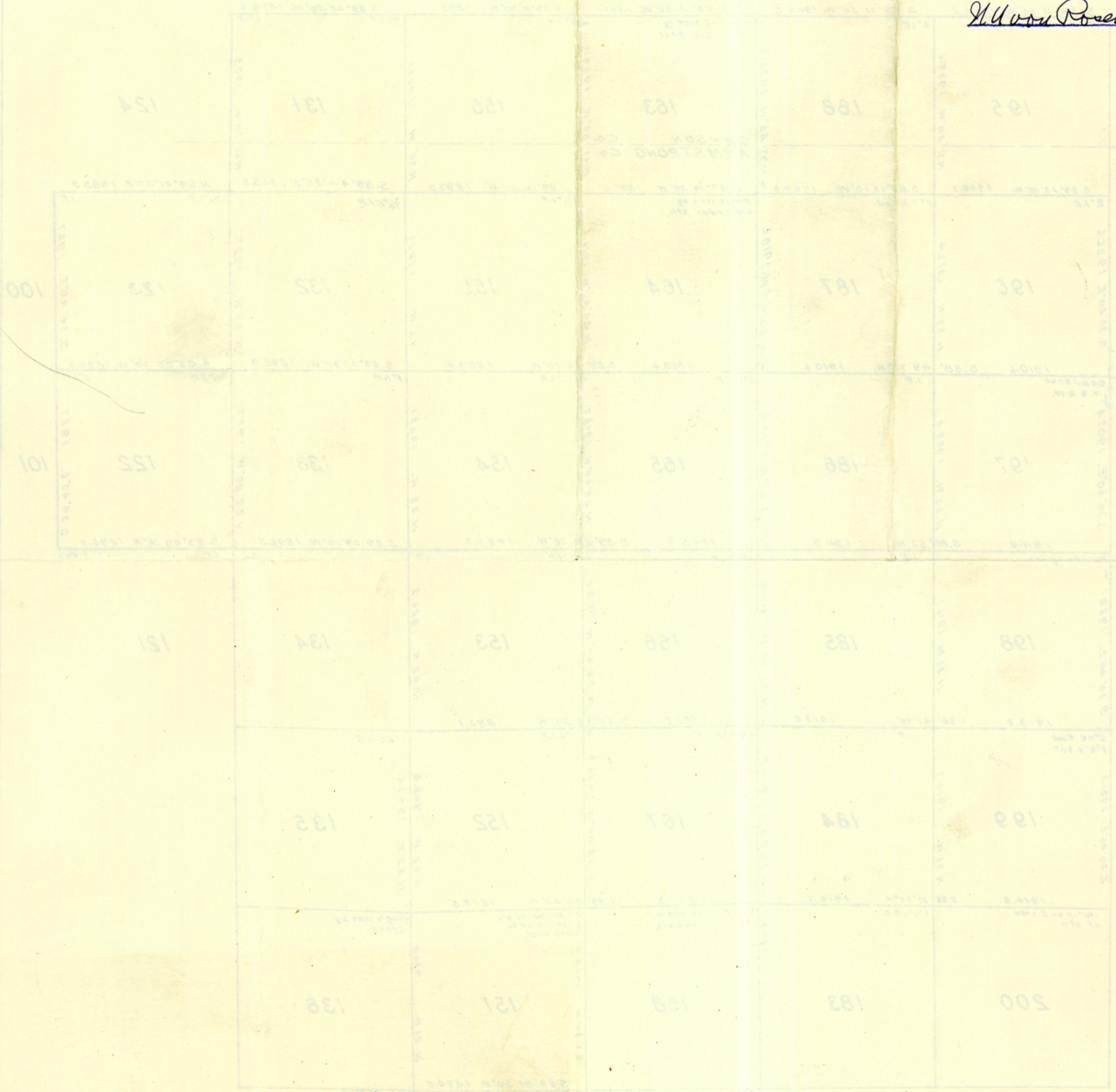
I, HOWARD T. TRIGG, A LICENSED LAND SURVEYOR OF TEXAS, DO HEREBY CERTIFY THAT THIS SKETCH OF A PART OF BLOCK B 3 IN ARMSTRONG AND CARSON COUNTIES IS TRUE AND CORRECT AS SURVEYED BY ME UPON THE GROUND SEPT. & OCT. 1950.

Howard T. Trigg  
 LICENSE LAND SURVEYOR OF TEXAS.

Sketch File No. A-15  
Armstrong County  
North Part of Block B3  
H & G. N. Ry. Co.  
Filed February 1, 1951

BASCOM GILES, Com'r

U. von Rosenberg  
File Clerk



Created 13717

THE STATE OF TEXAS  
 COUNTY OF ARMSTRONG  
 I, Bascom Giles, County Clerk of said County, do hereby certify  
 that the within and foregoing is a true and correct copy of the  
 original as the same appears in the records of said County.

Bascom Giles  
 County Clerk of Texas