

File 7.

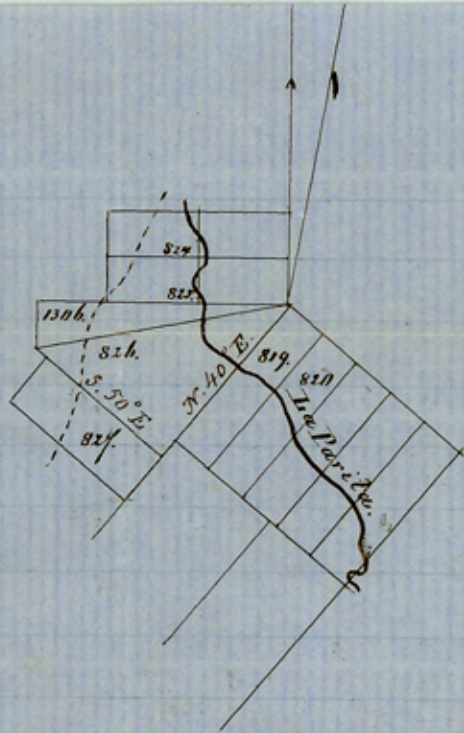
Sk. File No. 7
Atascosa Co.

Atascosa Co.

On Parita Cr. Recd. March 30/58

Situated about
11 M. South of Pleasanton
on La Parita Creek.
Sur. March 1847 by F. Giraud

Counter 13756



The annexed sketch shows
 correctly the position of sur-
 vey No 826 - Las Normas,
 1280 acres, as made by me
 in March 1847, and as repre-
 sented on the map of Atasco-
 so County, in this office
 J. W. W. W.
 Dist. Sur. B. D.

Counter 13757

Received March 30/58.
 C. W. P. P. P.