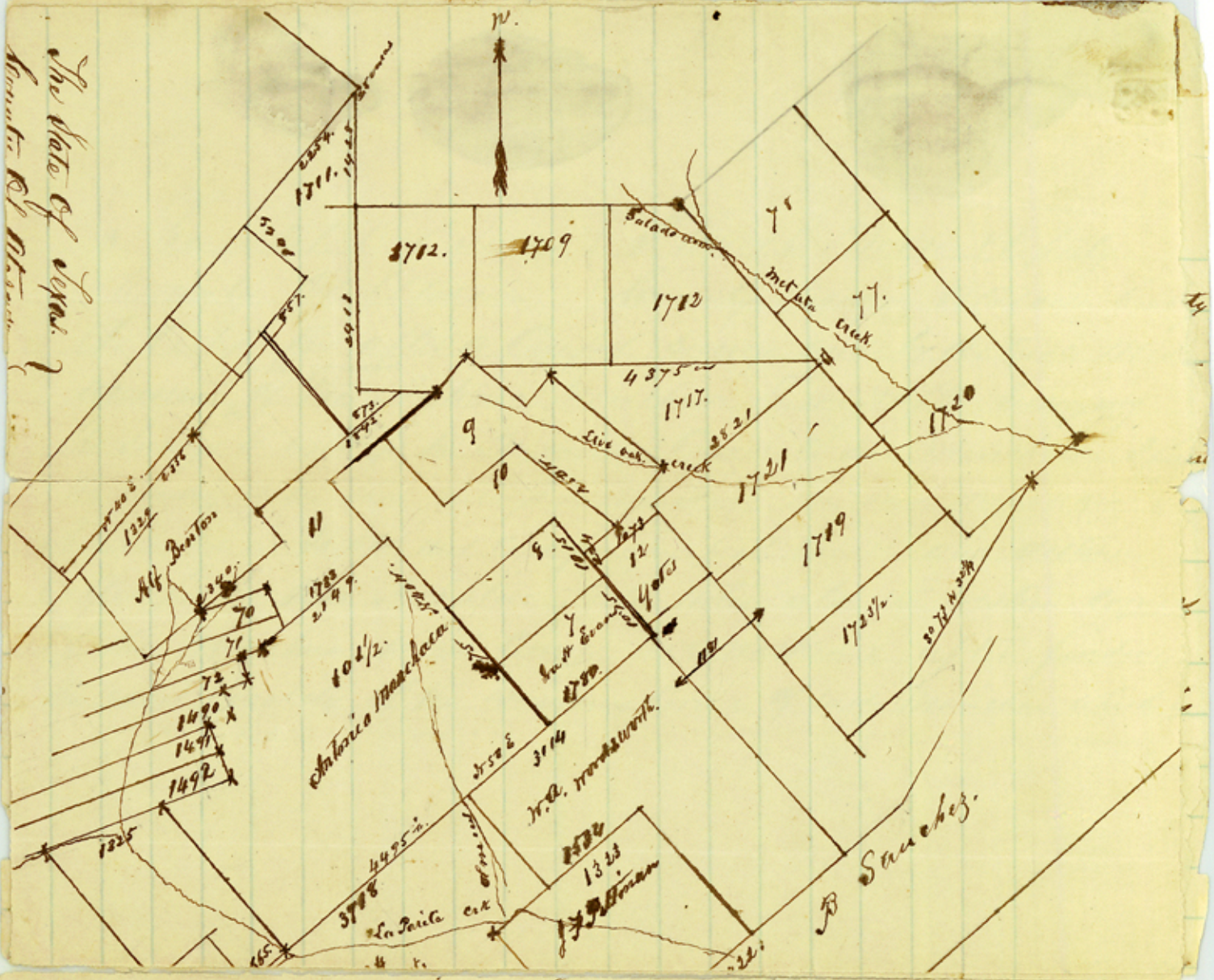


The State of Texas
County of Tarrant



1448 came to a stone the most western corner of said sur. No 1717. I found that the South East corner of the Manchaca to bear S 11 W from the most western corner of said 1717 and distant 2290 yards. Then Run the South East Boundary line 3175 yards at which point I planted a stone for its N E corner in Prairie. Then set the compass S 50 W which course and the distance of 2150 yards brought me to a corner of said Manchaca on the S E Boundary of Preemption No 71. and the Reading corresponding with the field notes of said Manchaca. I was compelled to adopt the said survey to be well established on the ground. I know that survey is located as represented in the accompanying sketch and the corner of the Sanchez as shown on S E Boundary of said sur. No 1720 standing on the Point of a Flat Ridge in Prairie with 3 Live Oaks. Near each other 2 of which are marked as represented in the Sanchez field notes. These 3 oaks are the only Live Oaks on the west side of the Metal Creek for 2 miles. I found the corners of surveys 1329 and the East corner of 7070 to correspond with their course and distance and bearings found at the corner as marked x by actual measurement as shown in sketch April 20th 1878. Ench More & Sat. C

File 16. (a)

Maricosa County

Sketch

filed April 29/78

J. J. Moore
County

Sketch & Statement by

Enoch Moore

Dated April 29, 1878

Survey 15 Miles S 15° E Pleasanton