

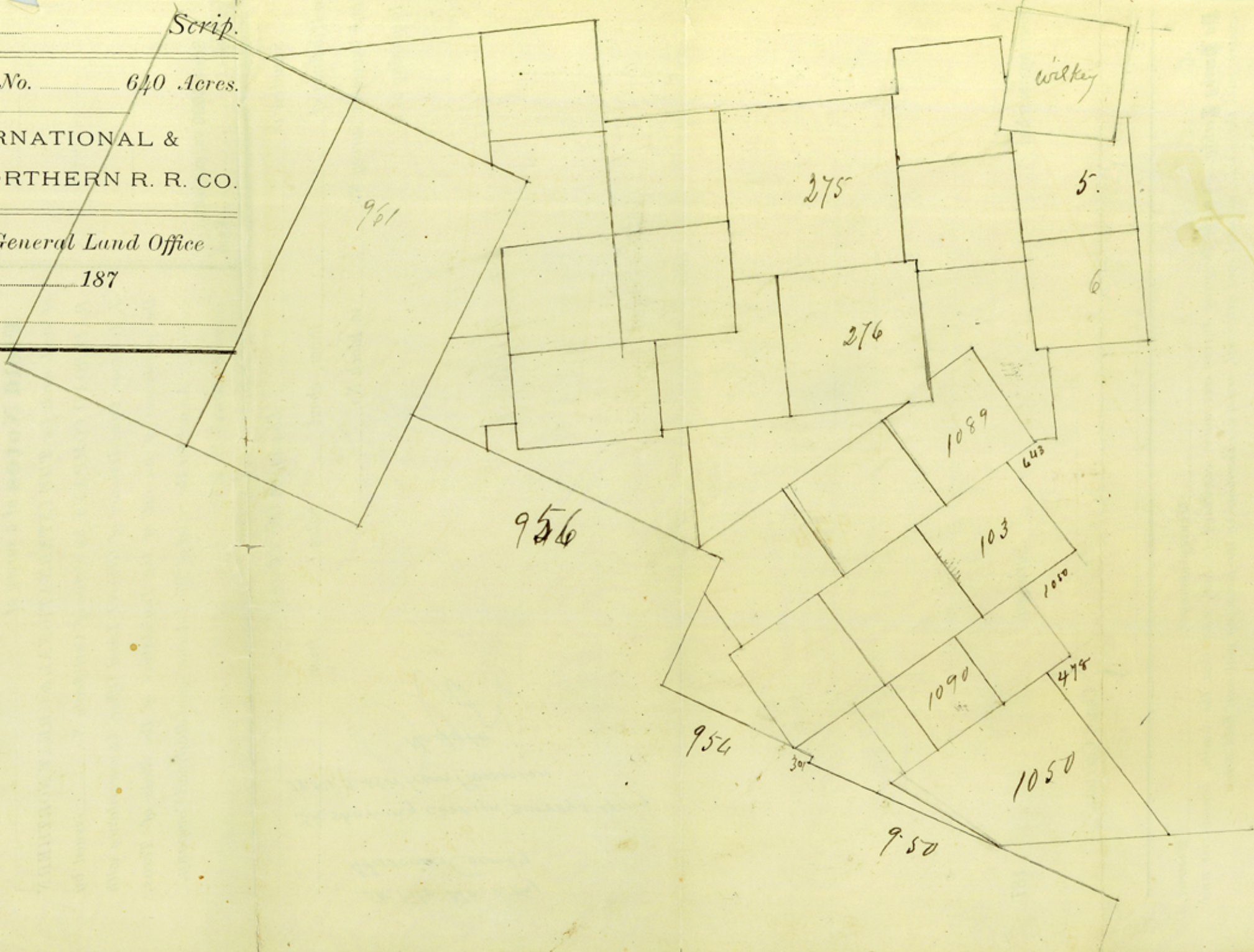
Scrip.

Field Notes No. 640 Acres.

INTERNATIONAL &  
GREAT NORTHERN R. R. CO.

Filed in General Land Office

187



Counter 13799

# The State of Texas,

DISTRICT.

SURVEY No. \_\_\_\_\_

BLOCK No. \_\_\_\_\_

## Field Notes of a survey of \_\_\_\_\_

of land, made for THE INTERNATIONAL & GREAT NORTHERN RAILROAD COMPANY by virtue of Certificate No. \_\_\_\_\_ issued by J. J. Groos, Commissioner of General Land Office, in accordance with the provisions of an act of the Legislature of the State of Texas, entitled, "An act for the relief of The International Railroad Company," approved March 10, 1875.



Scale 4000 vs. per inch.

Variation.....East.

Situated in \_\_\_\_\_ County, on the waters of \_\_\_\_\_

a tributary of \_\_\_\_\_ River, about \_\_\_\_\_ miles from \_\_\_\_\_

and known as Survey No. \_\_\_\_\_ in Block No. \_\_\_\_\_

Beginning at a

*SK. File No. 2769  
Atascosa County  
18 Mi. S. 40° W. from Pleasanton  
No date*

Bearings marked

Surveyed,

187

Chain Carriers.

I, \_\_\_\_\_ Deputy Surveyor, \_\_\_\_\_ District,  
Do Hereby Certify, That the foregoing Survey was made according to law, and that the limits, boundaries and corners, with the marks, natural and artificial, are truly described in the foregoing plat and field notes.

Deputy Surveyor, \_\_\_\_\_ District.

I, \_\_\_\_\_ District Surveyor, \_\_\_\_\_ District,  
Do Hereby Certify, That I have examined the foregoing plat and field notes, and find them correct, and that they are recorded in my office, in Book \_\_\_\_\_, No. \_\_\_\_\_, Page \_\_\_\_\_

District Surveyor, \_\_\_\_\_ District.