

October 1894
 Atascosa Co. Map dated
 dated April 13, 1917
 1894, 2330M. H. Robinson
 Atascosa County
 Plat of a portion of

The State of Texas }
 General Land Office } I, J. T. Robison, Commissioner of the General
 Land Office of the State of Texas, do hereby certify that the
 plat of land surveys shown hereon is a true and correct copy
 of a part of the map of ATASCOSA COUNTY, dated October, 1894,
 now in use as the official map of said county.

IN TESTIMONY WHEREOF, I hereunto set my hand
 and affix the impress of the seal of said office,
 this 13th day of April, A.D. 1917.

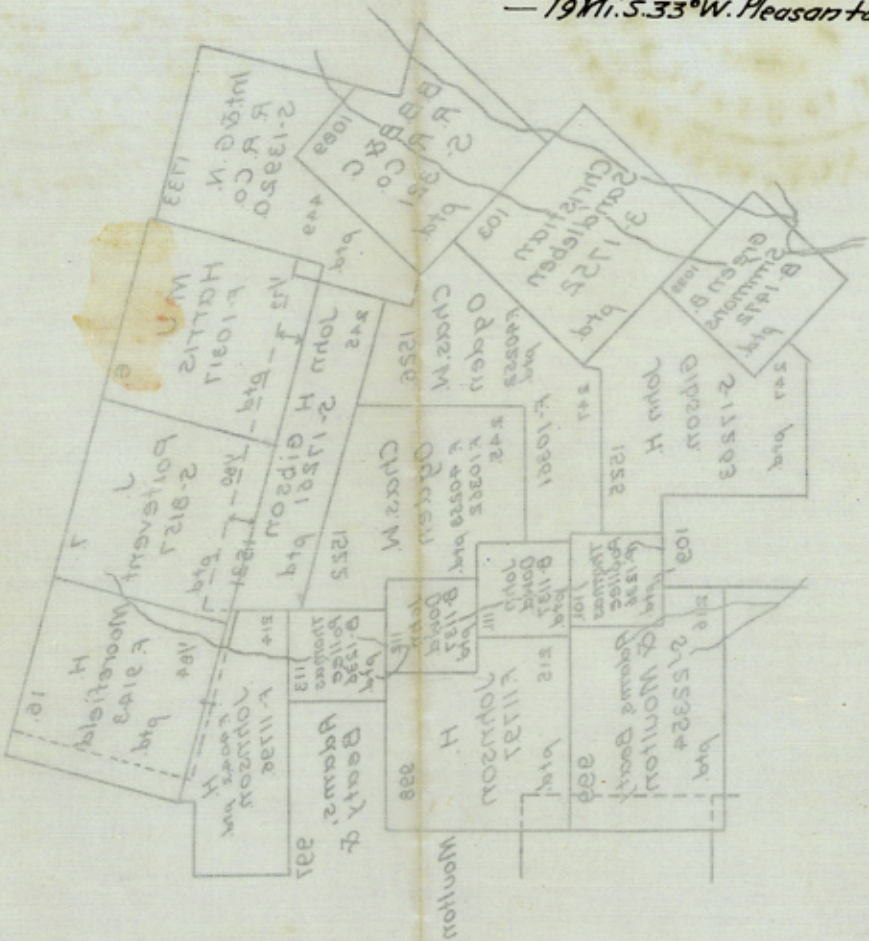
J. T. Robison
 Commissioner General Land Office.



Sk. File No. 34.
Atascosa County

Copy of a portion of
Atascosa Co. Map, dated
October, 1894.

Dated April 13, 1917.
— 19M. S. 33° W. Pleasanton —



Now in use as the official map of said county
of a part of the map of ATASCOSA COUNTY, dated October, 1894,
land Office of the
General Land Office
The State of Texas

IN TESTIMONY WHEREOF, I hereunto set my hand
and affix the impress of the seal of said office,
this 13th day of April, A. D. 1917.

[Handwritten Signature]
Commissioner General Land Office.