

Office of

RIGHT OF WAY AGENT.

Houston, Texas, August 30th 1894

Subject

Hon. W. L. Mc Gungler
Austin.

Dear Sir.

Enclosed you will find
sketches and statements of work we
have recently had done in Austin Co.
by the Surveyor of that County -

Also Statement of Mr. G. M. Williams,
a surveyor, who accompanied the
County Surveyor on this work -

Please have these notes compiled
and advise me as to how the Flores
grant should be constructed.

Yours respectfully
W. H. Stewart.



Office of

RIGHT OF WAY AGENT.

Houston, Texas, Dec 10/94.

Subject.....

Hon. W.L. McGaughey,
Commissioner,
Austin, Texas.

Dear Sir,--

At the suggestion of your office the owners of the land formerly owned by the H. & T.C. R.R. Co at their own expense made certain connections, (through the County Surveyor's office), with surveys adjacent to the Vital Flores and San Felipe Town Tract in Austin County.

These connections maps etc were sent to your office on the 30th of August last, asking that a sketch be compiled by your department, showing the construction of the surveys effected.

If this work has been compiled will you be kind enough to send me a copy of the map, and if it has not been compiled can you give me an idea, as to when it will be done?

If I remember corectly there are several unpatented school surveys in this locality, the number of acres in each, depending upon the construction given by your office.

I would thank you very much to let me hear from you in regard to this matter.

Yours respectfully,

W. A. Stewart

Counter 13873

V'

I Geo. M. Williams, a practical Surveyor, do hereby certify that I cooperated with Mr. A. Ludwig, Surveyor of Austin ^{County} Tex. in establishing the East corner of the Vital Flores League and Labor Survey. We began at point - where the S.E. line of the San Felipe Town Tract strikes the West Bank of the Brazos River, as the said bank now exists. The river is now and has been for years cutting away the West bank at this point - and forming a large sand bar on the opposite or East side of river and the old corner of the Town Tract must have been far out in what is now the Channel or perhaps on a sand bar on East side. We ran thence S 45° W. (Va 8° 50' E) with line, on which many subdivision corners of Tracts out Town Tract are established and which was run and monumented by Mr. Batté (C. E.) 20280 varas to a Cedar Post 8' x 8' and 2 feet above ground, the said post being the South corner of the said San Felipe Town Tract as planted by the said Batté and which I believe to be as near correct as it is possible to reestablish the said corner - unless the original corner on River could be ascertained which is impossible.

From the said South corner of the said Town Tract. We ran thence S 45° W. 2000 varas and set a stake for the East corner of the Vital Flores League and Labor Sur.

Thence S 45° W. at 1574 varas crossed a Drain Course N 5 1/2° E and S 5 1/2° W. at 1834 varas put a meander stake on the East Bank of the San Bernard River 60 var from middle of Bed of River Course of River here is East.

From the said Meander station we meandered the San Bernard River up to the forks of the River at the mouth of Cashatta Creek and thence on up the San Bernard to the upper corner of Strahan Survey, which is witnessed by a Double Elm marked W. Thence on up River to the mouth of German Branch, to point-of-triangle in fork of said Branch and the San Bernard. The meander calls are all given ~~in~~ and shown on sketch H. made by A. Ludwig.

From the station at the mouth of German Branch we ran thence North 2006 ~~or~~. Thence N 34 1/4 W 730 varas to a stone at the established S.E. corner of the W^m Austin Sur. (witness trees are gone) Thence West 589 varas to a Dead Jack Oak, 30" marked M.H. which is the Oak called for in original Austin and Holt field notes and is 821 var. East of the SW corner of the W^m Austin Survey and N.W. corner of the J. E. Holt Survey.

The Elm Trees called for in the J. E. Holt field notes, as standing in forks of German Branch and the San Bernard, are gone.

It is impossible to fit the Vital Flores League & Labor Sur. so as to harmonize all of its calls for San Bernard and Mouth of Branch - (Cashatta)

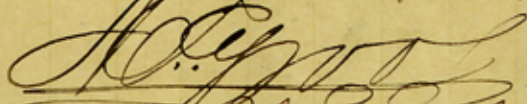
Survey made May 30. 31st June 1st and 2nd 1894. Geo. M. Williams

File 6. B.
Austin Co.

Statement of G. W.
William a Surveyor,
who accompanied the
Co. Sur. A. Ludwig of
Austin Co. in establishing
the Vital Flores grant
and meanders of San
Bernard river &c
see sketch file with
this.

See Sk. File 6B (sketch)
by A. Ludwig

Filed in G. O. Aug 31/94


Chief Clerk

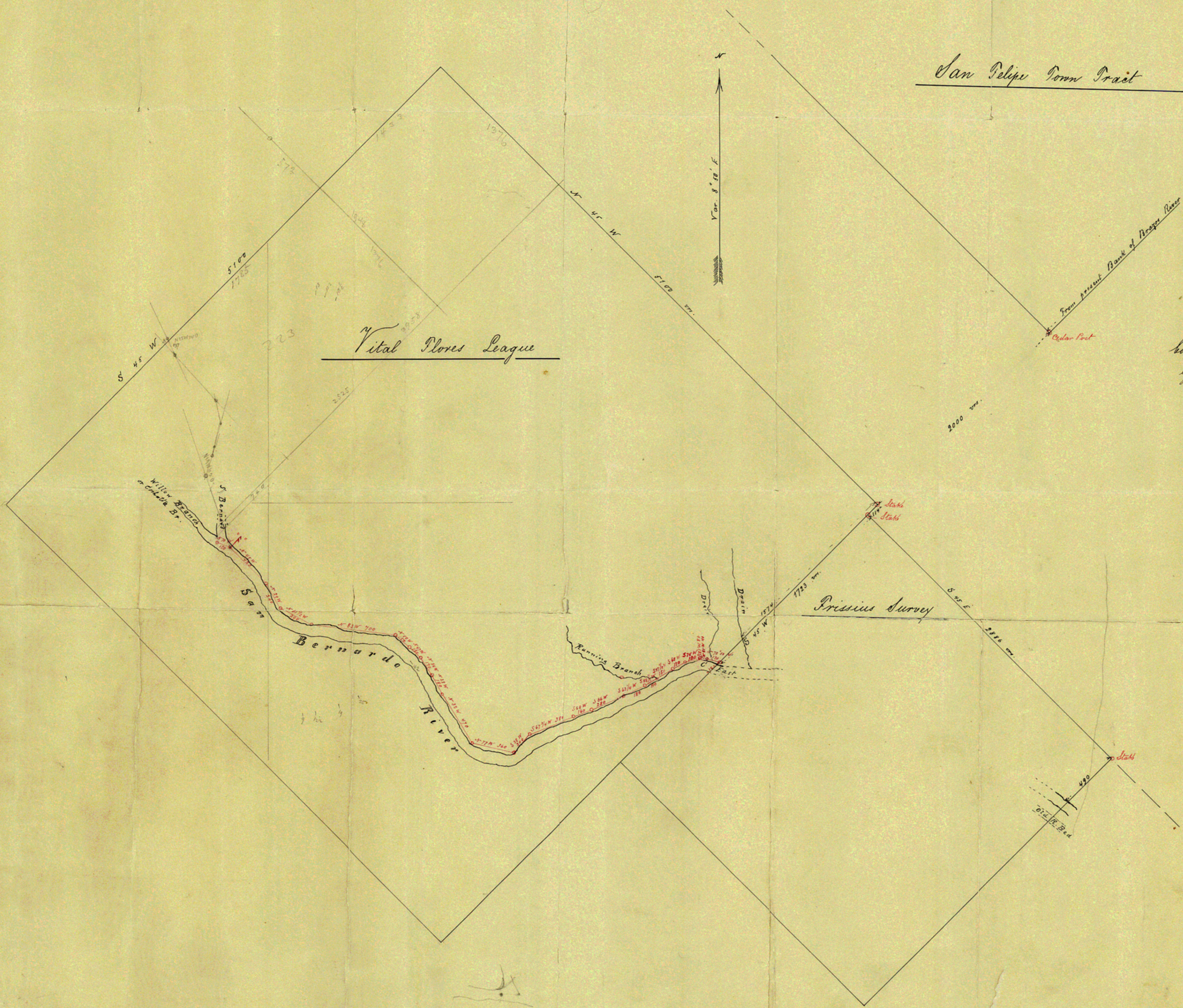
21 Miles S. 20° E. Bellville

San Felipe Town Tract

Sketch A

Showing part of the San Felipe Town Tract and Vital Flores League and Prissius Survey. The East corner of the Vital Flores League being located from the South corner of the San Felipe Town Tract (2000 vrs. S 45° W). Said corner of Town Tract, established by Walter C. G. and found to be 20280 vrs. from the present W bank of the Brazos River. It is evident that the original corner of said Town Tract was further East in the present River bed, as the West bank has been rapidly coming for years. Also showing meanders of the San Bernard from the S.E. line of the Vital Flores League to the mouth of Coahatta Branch, made by me June 1st 1894.

A. Priddy
Co. Surveyor, Austin Co. Tex.



Meanders of the San Bernard from point marked opposite the mouth of Willow Branch

N 19° W 620	N 19° W 100	N 21 1/2° W 440
N 18 1/2° E 170	N 2 1/2° W 230	N 70° W 550
N 13° E 80	N 13 1/2° E 180	N 49° W 300
N 15 1/2° E 190	N 16 1/2° W 140	N 20 1/2° E 870
N 12 1/2° W 170	N 23° W 170	N 10° W 780
N 42° W 510	N 65 1/2° W 360	N 68 1/2° W 1080 Forks of
N 25° W 140	N 48° W 120	S. Bernard & Gorman Creek
N 9° W 280	N 41° W 70	Thence parallel with Holt line
N 45° W 300	N 27° W 70	North 2000 vrs. Thence
N 57° W 280	N 23° W 110	N 36 1/4° W 730 to S.E. corner
N 24° W 490	N 29° W 80	of Austin Survey
N 36 1/2° W 200	N 36° W 90	Thence West 589 (590) vrs.
N 12° W 120	N 49° W 120	Old Jack Oak M H
N 11° W 180	N 49 1/2° W 150	Old mark
N 3° W 120	N 45° W 120	
N 49° W 300	N 39° W 100	
N 60° W 80	N 57° W 170	
N 38° W 150	N 74° W 107	
N 9° W 170	upper cor. Strakam Sur. (E 6m W 3.82m 30)	
N 38 1/2° E 140	N 80 1/2° W 230	
N 56 1/2° E 380	N 87° W 220	
N 47° E 310	N 65° W 250	
N 3 1/2° W 720	N 46 1/2° W 180	
	N 19 1/2° E 320	

Filed in G. O. Aug. 31/94.

A. Priddy

Sketch File 6-B
County Austin
(letter & statement still in Sk. F. 6b)

V2 570 vrs = 1 mi

COUNTER# 14926

Sk. File No. 6.B.
Austin Co.
18 Mi. South Bellville.

File 6.B.
Austin Co.
Connecting from
San Felipe de Austin to
San Leon tract to the
Vital Flores Legua
& also the meanders
of the San Bernard
all in Austin Co.
Filed Aug 31/94.

V³