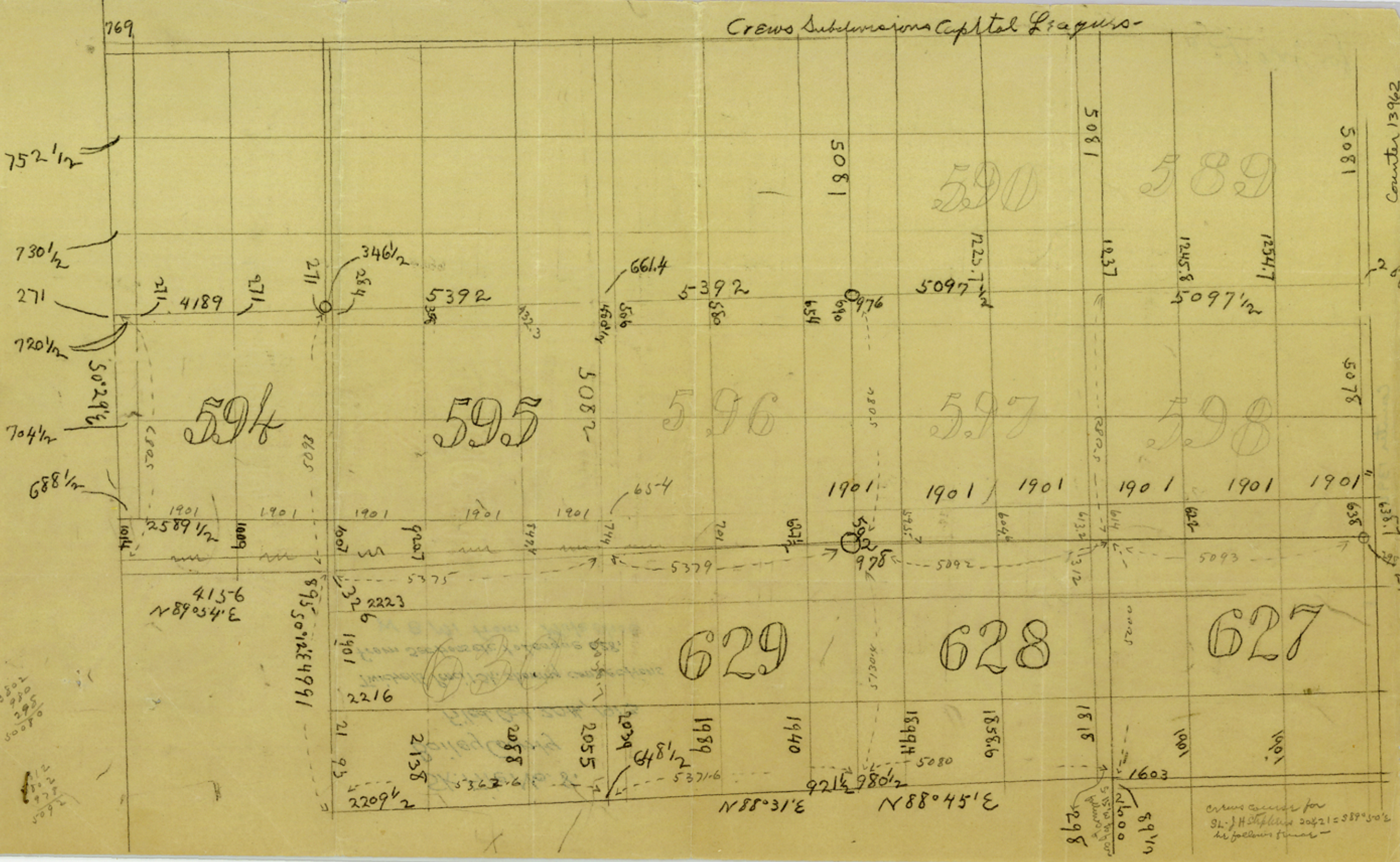


Crews Subdivisions Capital League -

Counter 13962



769

752 1/2

730 1/2

271

720 1/2

704 1/2

688 1/2

3502
1080
500
500

1100
1100
1100
1100

211 4189

1901 2589 1/2

4156
N 89° 05' 48" E

271

1901 1009

271

895
50° 12' 49.91

346 1/2

1901 1007

2223

1901

2216

21 95

2209 1/2

5392

1901 9207

633

2055

2058

432.3

1901 5474

2055

5082

1901 744

2055

661.4

1901 65-4

2039

5-392

1901 701

629

1989

1940

580

1901 5379

1940

5081

654

1901 502

1940

976

1901 502

1899

590

5097 1/2

1901 595

628

1856.6

1899

1225 1/2

1901 604

1815

5081

1237

1901 614

1815

589

1245.8

1901 621

1901

1254.7

1901 621

1901

5081

5078

1901 638

1901

200

1901 638

1901

Crews account for St. J. H. Shipley 20421 = 589° 50' E at following times -

Sk. File No. 8.

Bailey County

Filed Oct. 20th, 1913

Twichell's Pencil Sk. showing connections
from Section sets to League 628,
W 8 Mi from Muleshoe.

Counter 13963

for file 7

W. D. TWICHELL
AMARILLO, TEXAS

October
Amarillo, Texas. Eighteen
Nineteen-thirteen

2107

RECEIVED

OCT 20 1913

Referred to Map

Hon. J. T. Robison
Austin, Texas.

Dear Sir:-

I have received the blue print map instructions for Garza County field notes etc. and I am preparing these field notes. I will not have an opportunity to compare all of the data on John's map for several days, on account of business in my office and on the ground which must have immediate attention.

You will appreciate that the data shown on John's map is obtained from a great number of different surveys which I have made during the past twenty years and therefore considerable time will be required to look into this data and proof read John's map.

I am preparing a rough pencil sketch inclosed herewith showing Crews connections from section lines to capitol league 628, etc. to assist John in getting correct construction at N.W. corner of Bailey County. This work was not done by me and therefore cannot be reported officially.

WDT/SS

Yours respectfully,

W D Twichell