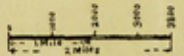
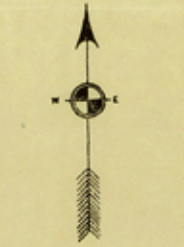
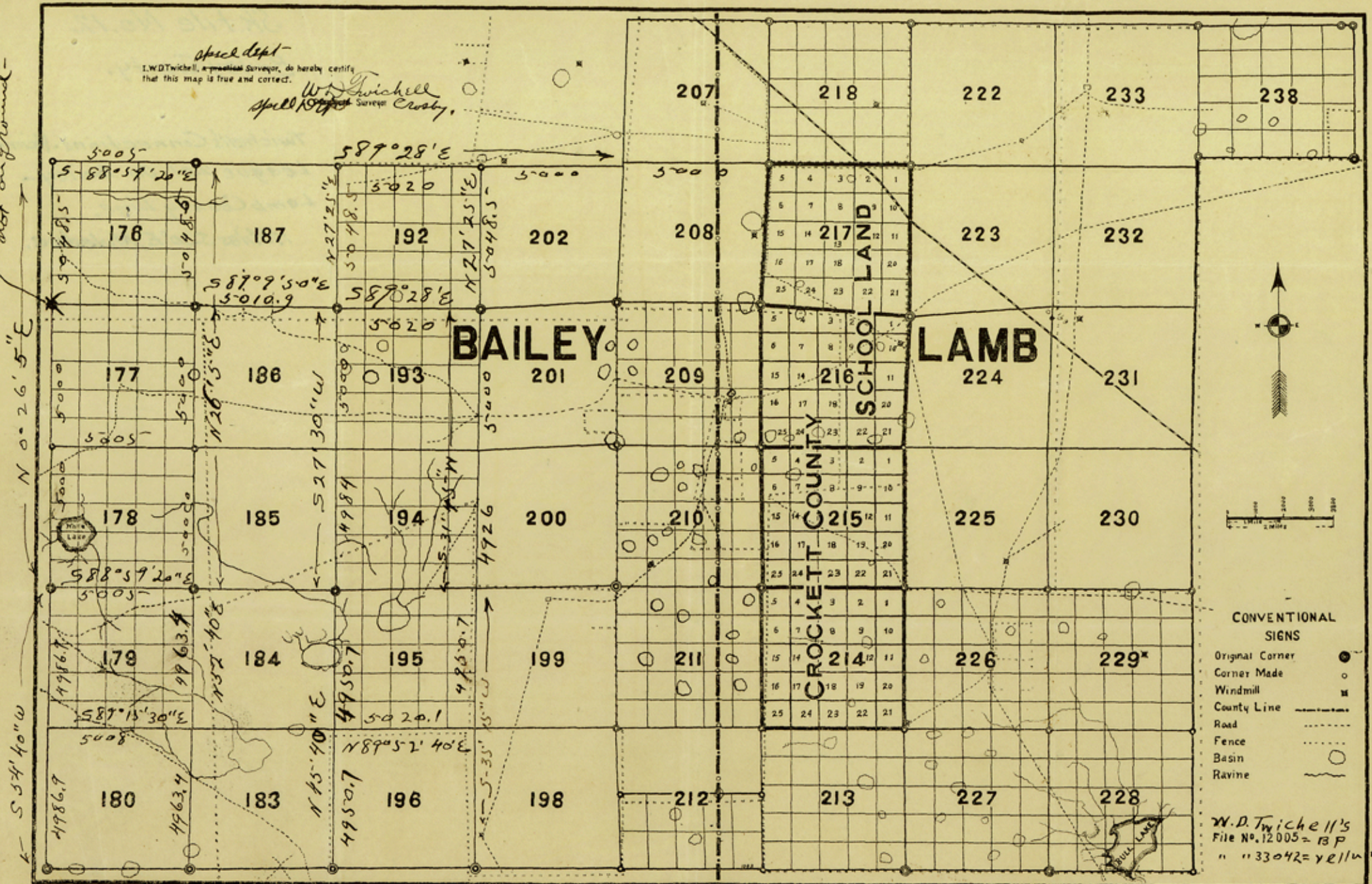


From this original survey is not on ground

Special Dept -
I, W.D. Twichell, a Licensed Surveyor, do hereby certify
that this map is true and correct.

W.D. Twichell
Special Dept. Surveyor
Crosby, Ind.



- CONVENTIONAL SIGNS
- Original Corner
 - Corner Made
 - Windmill
 - County Line
 - Road
 - Fence
 - Basin
 - Ravine

W.D. Twichell's
File No. 12005-13 P
" " 33042 = yellow

Counter 13969

Apr. J. T. Robinson: The above connections are true and correct and I have used them as a base from which to construct leagues 172 and intervening leagues as per el. Dept survey of Crosby as reported with Sylvan Sanders survey 2 and 7 -
W.D. Twichell Special Dept. Surveyor Crosby Ind. Dist.

Sk. File No. 12
Bailey County.

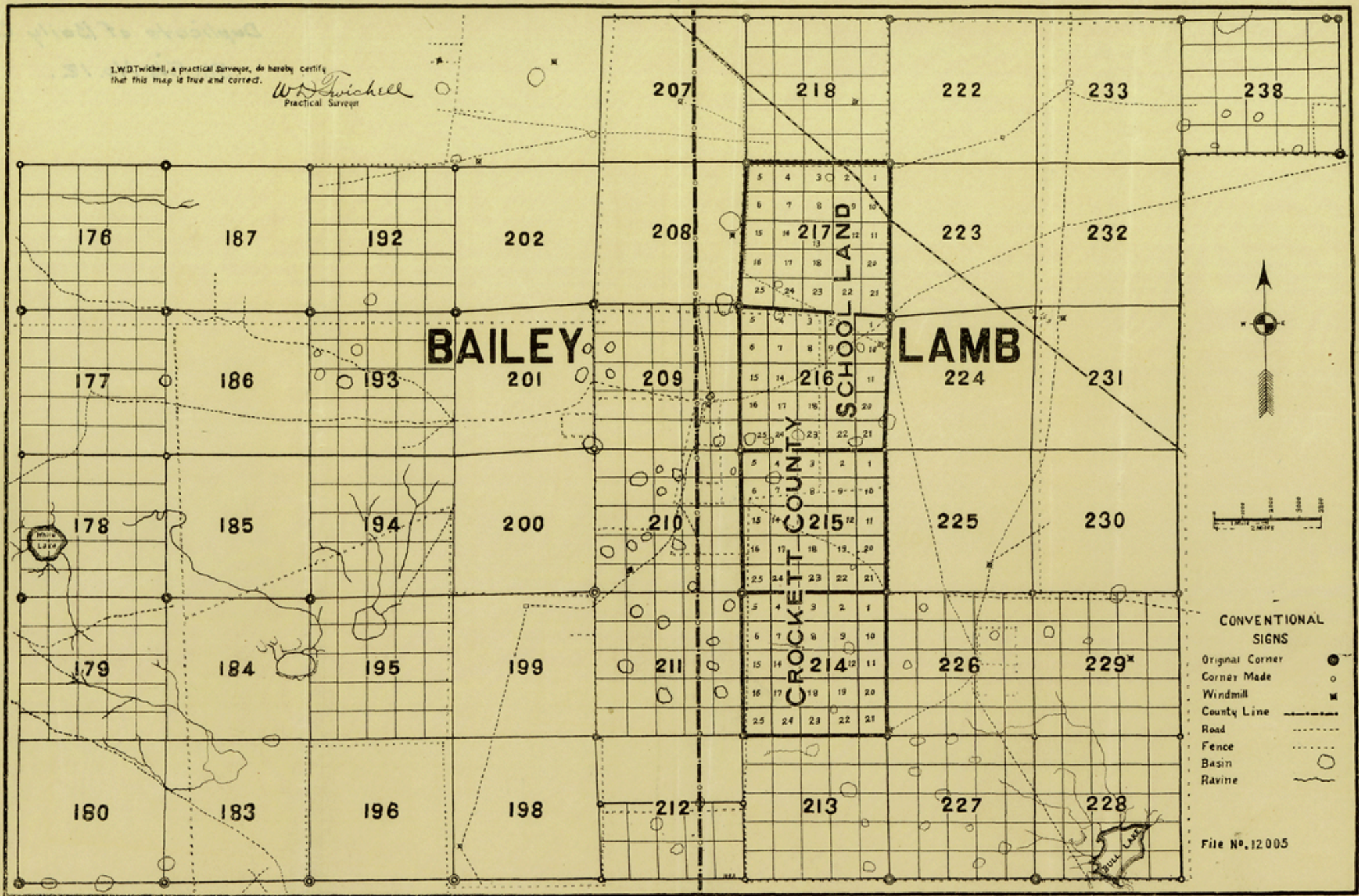
Twichell's Connections - Vicinity
League 201. On Bailey -
Lamb County Line.
17 Miles S. 30° E, Muleshoe.



Section 139 70

L.W.D. Twichell, a practical Surveyor, do hereby certify
that this map is true and correct.

L.W.D. Twichell
Practical Surveyor



- CONVENTIONAL SIGNS**
- Original Corner
 - Corner Made
 - Windmill
 - County Line
 - Road
 - Fence
 - Basin
 - Ravine

File No. 12005

Counter 13971

Duplicate of Baily Co.
St. File No. 12.



Counters 13972

CONVENTIONAL
SOUND
Cable Lines
Rail
Road
Stream
Ditch
Elev. 100
100 No. 11002