

Sketch File #12H.

Baylor County.

Filed May 7th 1912 -

J. T. Robinson, Comm.

A. C. Clark, Clerk

100

See Surveyors Statement of
date April 21, 1919 in
SF 10651, regarding NE cor
of Polk County School Land
4-25-19 Blucher

Connections for locating
Polk County School Survey.

Counter 14175

The State of Texas)

Baylor county,) Field notes connecting lines run for the purpose of locating the W. and N. lines of Polk County school land survey in Baylor and Throckmorton Counties, and also to determine the position of the S. line of sections Nos. 1, 2, 3, and 4 T. & N.O. Ry. Co. sur. in Baylor county.

Beginning at a set stone the original N.E. cor. of No. 2131, T.E. & L. Co. sur. in Throckmorton county wh. an Elm with block cut out of N.E. side brs. S. 73 W. 22.6 vrs.

Thence W. at 504 vrs. creek at 648 bend of same at 694 same creek at 735 & 736 vrs. same creek 854 vs. set a stone for S.E. cor. of Polk Co. school land marked S.E.P. wh. a mesq. 6" brs. S. 2° 30' E. 5 vrs.

Thence W. at 498 vrs. pass a pile of stone the original N.W. cor. of No. 2131, wh. an old mesq. brs. S. 22.40 W. 9 vrs. at 1222 vrs. branch, at 2542 creek course S. at 3246 pass fence running S. at 4560 vrs. pass lane running S. in all 4728 vrs. set stone marked S.E.G. for S.E. cor. of J.J. Good sur.

Thence W. at 26.5 vrs. pass the center of lane running N. at 1193 fence running S. at 2540 vrs. pass a set stone marked N.W. 3014, at 2810 creek, course at 3904 pass gate post on old fence line at 5632 vrs. set a stone mkd. S.W. 06. & pile of stone wh. 2 mesq. brs. S. 36° 30' E. 23 vrs. a double mesq. brs. S. 72E. 21 vrs.

Thence W. 661 vrs. set a stone mkd. S.E.T. for the S.E. cor. of Travis county school land sur. wh. a double mesq. brs. S. 79° 32' W. 16 vrs. a mesq. 8" brs. S. 1° 29. 6 vrs.

Thence W. 112 vrs. pass corner of fence at 312 vr. the N.W. cor. of No. 3039 T.E. & L. Co. sur. the original cor.

Return to stone set for S.E. cor. Travis Co. school land sur.

Thence N. 1283 vrs. set stone and ston. md. mkd. S.W.H. for S.W. corner of H.H. Haggood sur. wh. the N.E. corner of an old rock house brs. S. 35 vrs.

Thence N. at 3412.6 vrs. Hog Creek course E, at 6781 vrs. stk.

Thence N. at 2266 vrs. across S. line of Baylor county near 9th mile monument 3387 vrs. built a large pile of stone for N.W.

Counter 14176

*See Com. line by A.D. Smith
made in May 1887, in Form S. 9083.
(See sketch files 9113, 12B, 12C + 12D)*

Bb¹

cor. of Calvin Farmer sur. wh. a mesq. 8° brs. S. 37° 4' E.
13 vrs. do 7" brs. N. 69° 20' E. 16 vrs.

Thence N. at 1382 vrs. pass stone md. the S.E. cor. of sec. ~~a~~
(abandoned)
~~bounded~~ NO 46, T. & N.O. Ry. Co. sur. at 2130 vrs. south wagon
creek, at 2552 vrs. north wagon creek, 3387 vrs. set a stone mkd.
N.W. P.C.S.L. wh. a mesq. 8" brs. N. 35° 20' E. 37.5 vrs. a
forked mesq. 10" N. 65° 55' E. 23.5 vrs. a double mesq. brs. S.
18° 11' E. 57 vrs. and S.pt. of ridge brs. S. 46° 15' W.

Thence N. at 1945 vrs. the S.W. cor. of sec. No. 70 T. & N.O.R.;
R.Co. sur.

Thence W. 1967 vrs. the S.W. cor. of sec. No. 69 for same comp.
on original corner, identified by W.A. Jones and A.K. Kerr.

Beginning at the original N.W. cor. of sec. No. 1 T. & N.O. Ry
Co. sur. an old stone. md. wh. the burned roots of a large post
oak tree brs. N. 49-3/4 E. 604. vrs;.

Thence S. at 956 vrs. pass 2 vrs. W. of a white post 1900.8
vrs. pt. 2.4 vrs. N. & 2. vrs. W. of a white post mkd. S.W. 2;
Thence E. at 949 vrs. pass 3 vrs. N. of a white post mkd. S.W. 1;
1900.8 pt. 4 vrs. N. & 4 vrs. E. of a white post mkd. S.E. 1;
Thence E. 1900.8 vrs. a set stone mkd. S.E. 2, wh. a mesq. 10"
brs. E. 29 vrs; -

Thence E. at 1676 vrs. set stone at end of fence running N. on
supposed E. line of Upshur Co. school land sur. wh. a mesq.
10" brs. S. 26° 45' E. 8.4 vrs. a double mesq. brs. S. 53" 18'
E. 14 vrs. at 1900.8 vrs. set a stone mkd. S.W. 4; wh. a mesq.
14" brs. S. 89° 44' E. 35.2 vrs. and a 4 prong mesq. brs. N.
1° W. 9' vrs.

Thence E. at 360 vrs. branch at 528 vrs. pass 1880 vrs. S. of
the S.W. cor. of sec. No. 70 T. & N.O. Ry. Co. sur. and 765 vrs.
N. of the N.W. cor. of Polk Co. School land survey at 1161.5 vs.
point 465 vs. N. of N.W. cor. of A.C. Thompson survey.

Thence east 7385 vrs. the S.E. cor. of sect. No. 4, a buried stone
elm N. 24° E. 376 vrs.

Thence N. 1180 vrs. thence E. 528 vrs. to S.E. cor. sur. No.
70 T. & N.O. R.R. Co. sur. thence N. 988 vrs. found set stone S.W
corner of W.L. Taylor tract and N.W. corner of D.M. Morrison
Pre Emption Sur. Surveyed April 16th to 20th. 1912.

Chain Carriers } J.T. Hamby
 } Jack Henderson

J.M. Morgan Co. surveyor, Knox county,

A.D. Kerr, Co. surveyor Baylor Co.

Recorded Book A.No. 2 pages, 534 & 535.

A.D. Kerr Co. Surveyor,

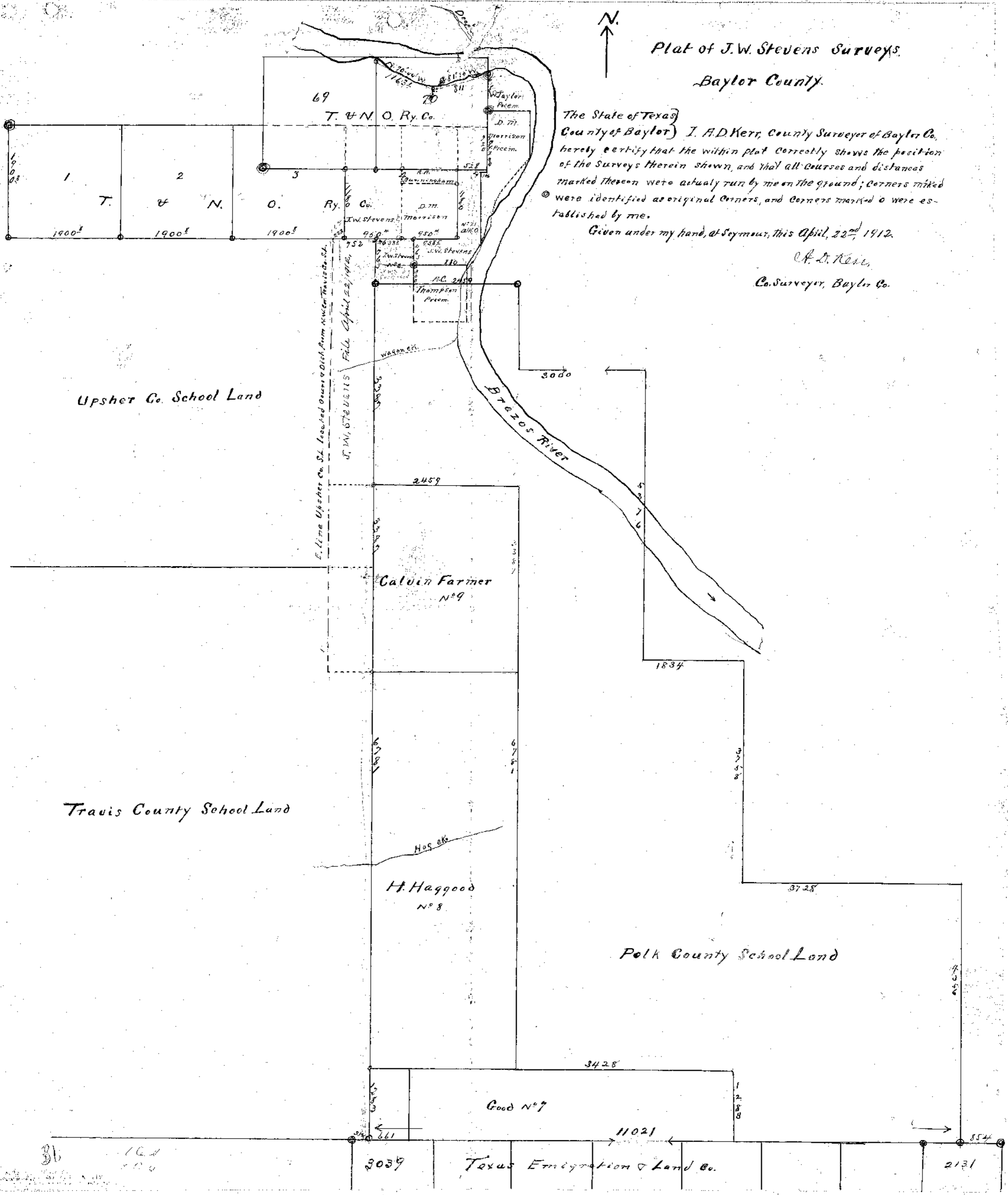
B.C.T.

Plat of J.W. Stevens Surveys Baylor County

The State of Texas }
County of Baylor } I. A. D. Kerr, County Surveyor of Baylor Co.,
hereby certify that the within plat correctly shows the position
of the surveys therein shown, and that all courses and distances
marked thereon were actually run by me on the ground; corners marked
⊙ were identified as original corners, and corners marked ○ were es-
tablished by me.

Given under my hand, at Seymour, this April, 22nd, 1912.

I. A. D. Kerr,
Co. Surveyor, Baylor Co.



36

102
104

3039

Texas Emigration & Land Co.

2131

