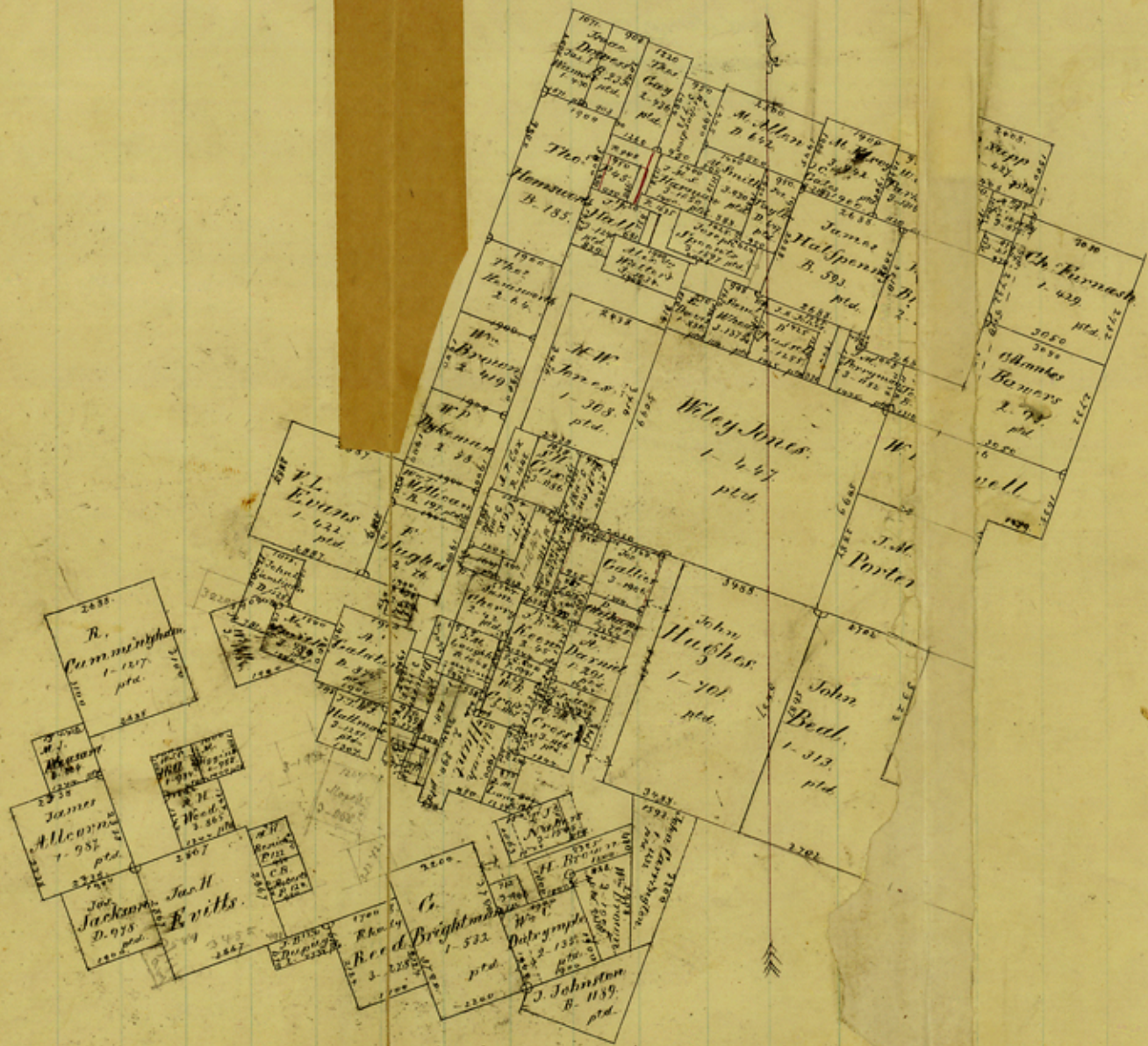


compiled in office June 1871 by

Bell Co. File 6



203
1382
1585
914
655

21 Sketch File No. 173.

Bell

file 21

Bell Co.

Compare Sketch 17.

On Noland's Creek,
8 Mi. N. 75° W. Belton.

Counter 17411

Sketch File No. 21.

Bell County.

Office Sketch.

Dated June, 1871.

On Noland's Creek

8 Mi. N. 75° W. Belton.