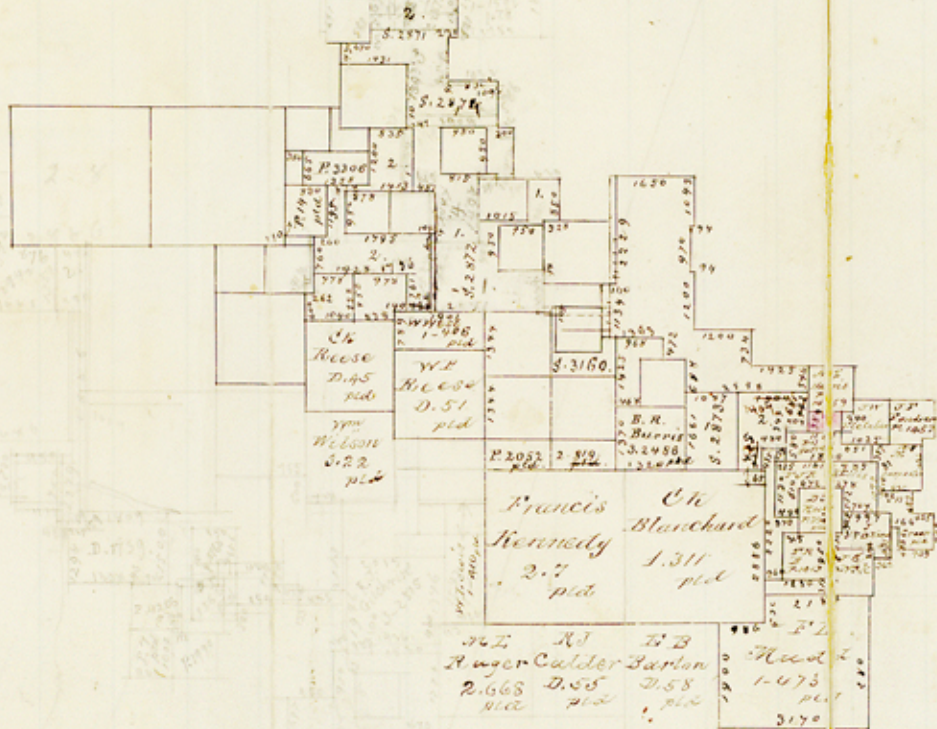


Plotted Apr. 14/82.
E. Schuchert.

The tract colored red
is the W.C. Pearce P. 5585,
formerly J.C. Smith P. 4996.



1 240.
300
2 340.

1345
140
1204

A
Bell co
SW of Belton

Sketch File No 31.
Bell County.
Office Sketch
Platted Apr. 14, 1882
- 19 Mi. S. 7.5° W. Belton -

Counter 14446