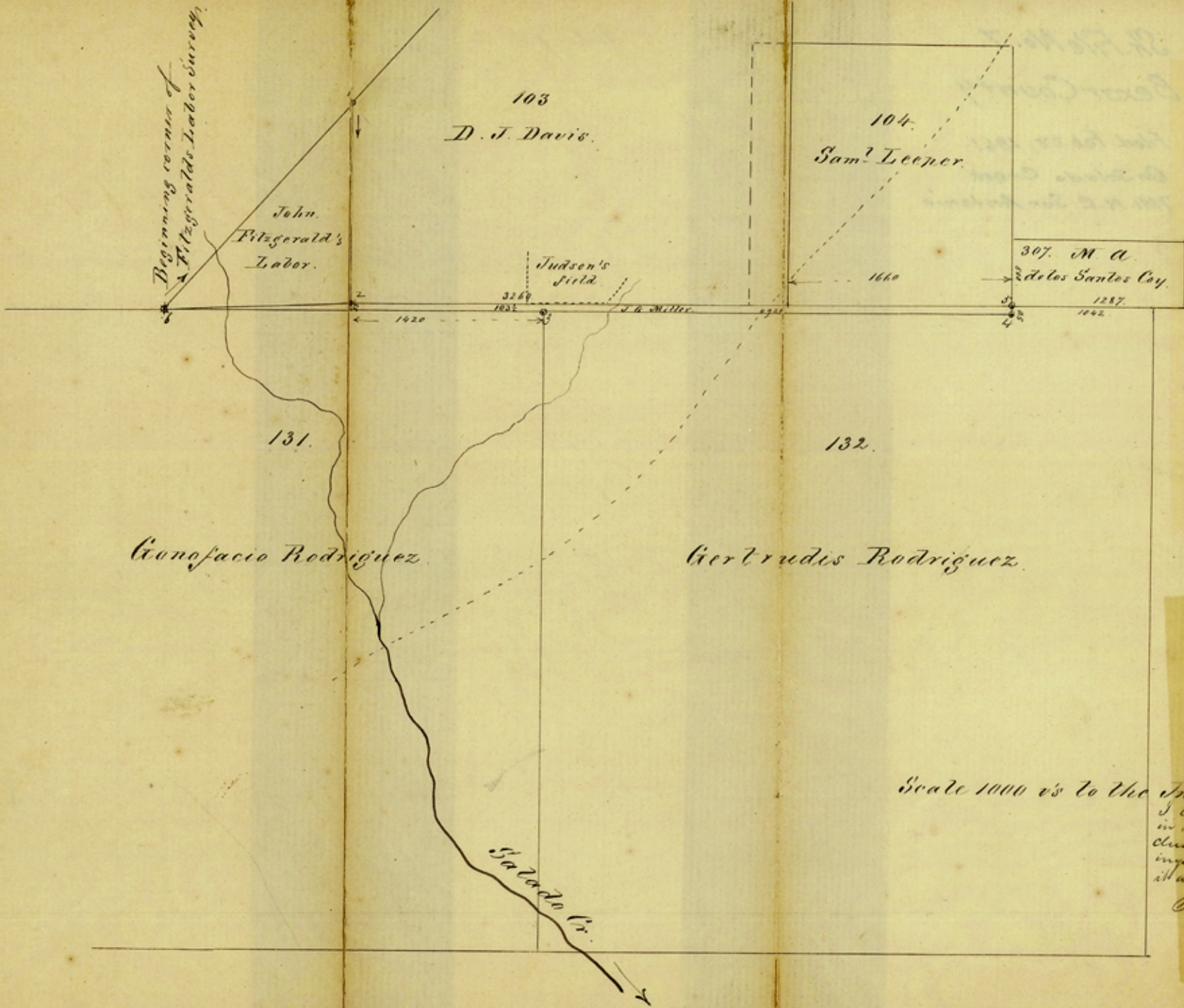


Sketch File 7.

Filed Feb. 28, 1861.

Bexar County
About 7 m. N. & E.
of San Antonio.



Scale 1000 is to the Inch

I certify that the above is a correct sketch of the surveys there
is represented and that the corners numbered from 1 to 5 in
closing were found and identified on the ground by the commis-
sioners. I also found a marked corner at 7 but could not identify
it as a corner of Fitzgerald by the bearings.

San Antonio Jan 29. 1861.

M. Friedrich

Dep. D. S. B. D.

Filed Febr. 28/61
L. W. Peoples.

Counter 14475

Sk. File No. 7.
Bexar County

Filed Feb. 28, 1861
On Salado Creek
7 Mi. N. E. San Antonio

File 7

Counter 14976