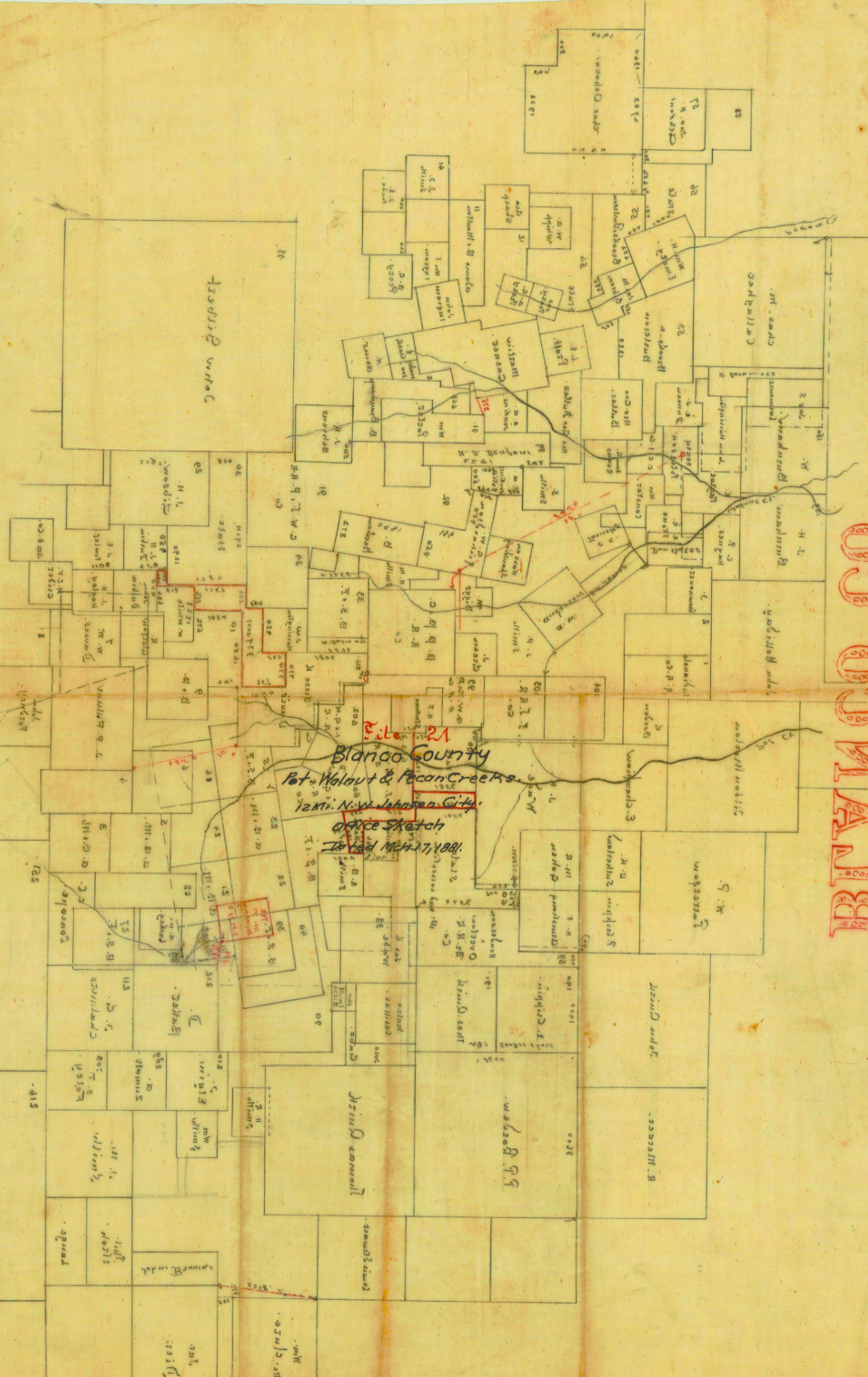


COMMERCIAL

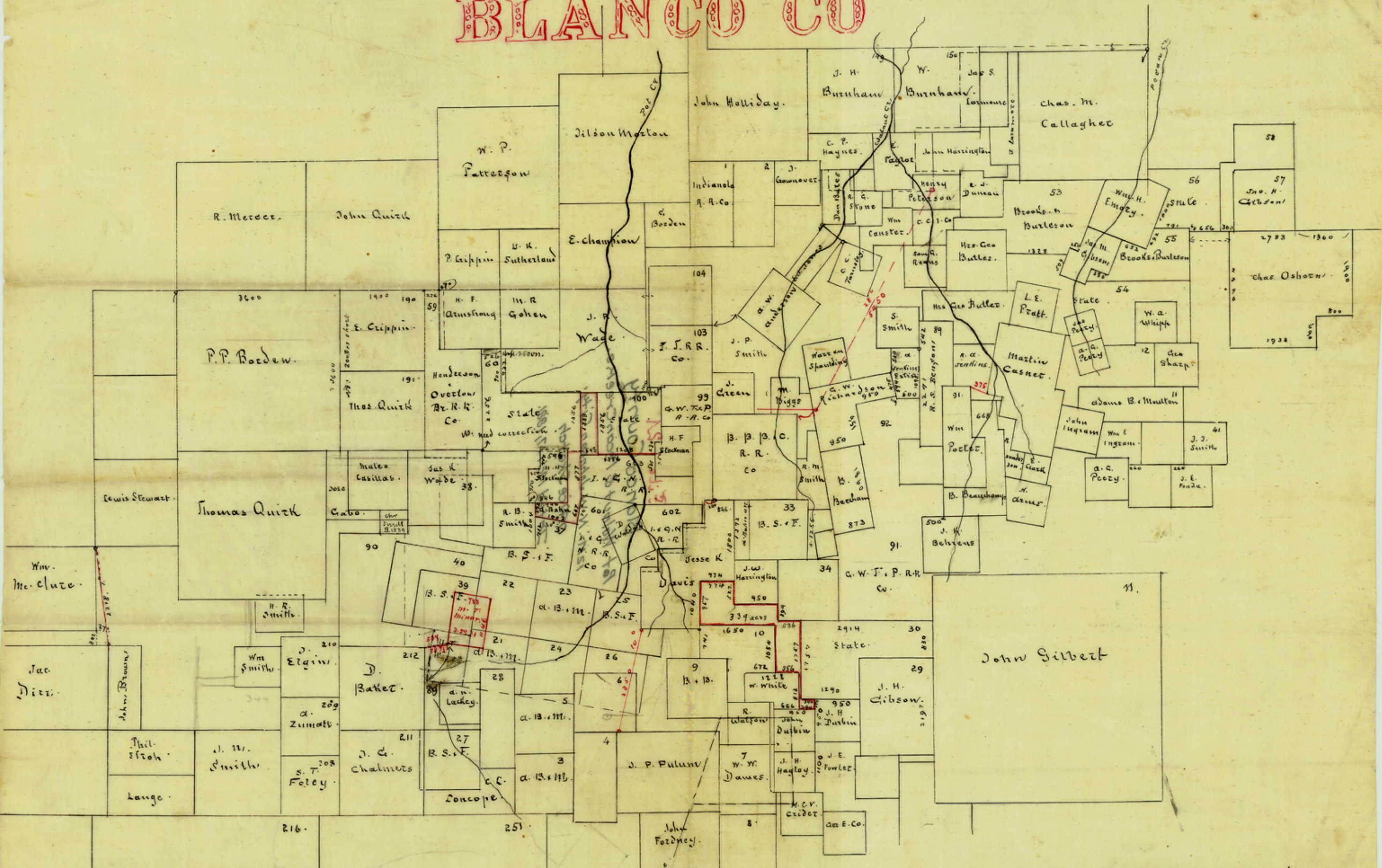


Blanco County
Pot. Walnut & Pecan Creeks
12 Mi. N.W. Johnson City
Office Sketch
1881/11/17/1881

1881/11/17/1881
Blanco County
1000 ft. wide

Blanco County
1881/11/17/1881
Blanco County

BLANCO CO



Genl Land Office. march. 17/1881

Scale: 2000 feet to an inch

Counter 14601

Rutersville College

Wm Skazock

00011/12/1881

District Line