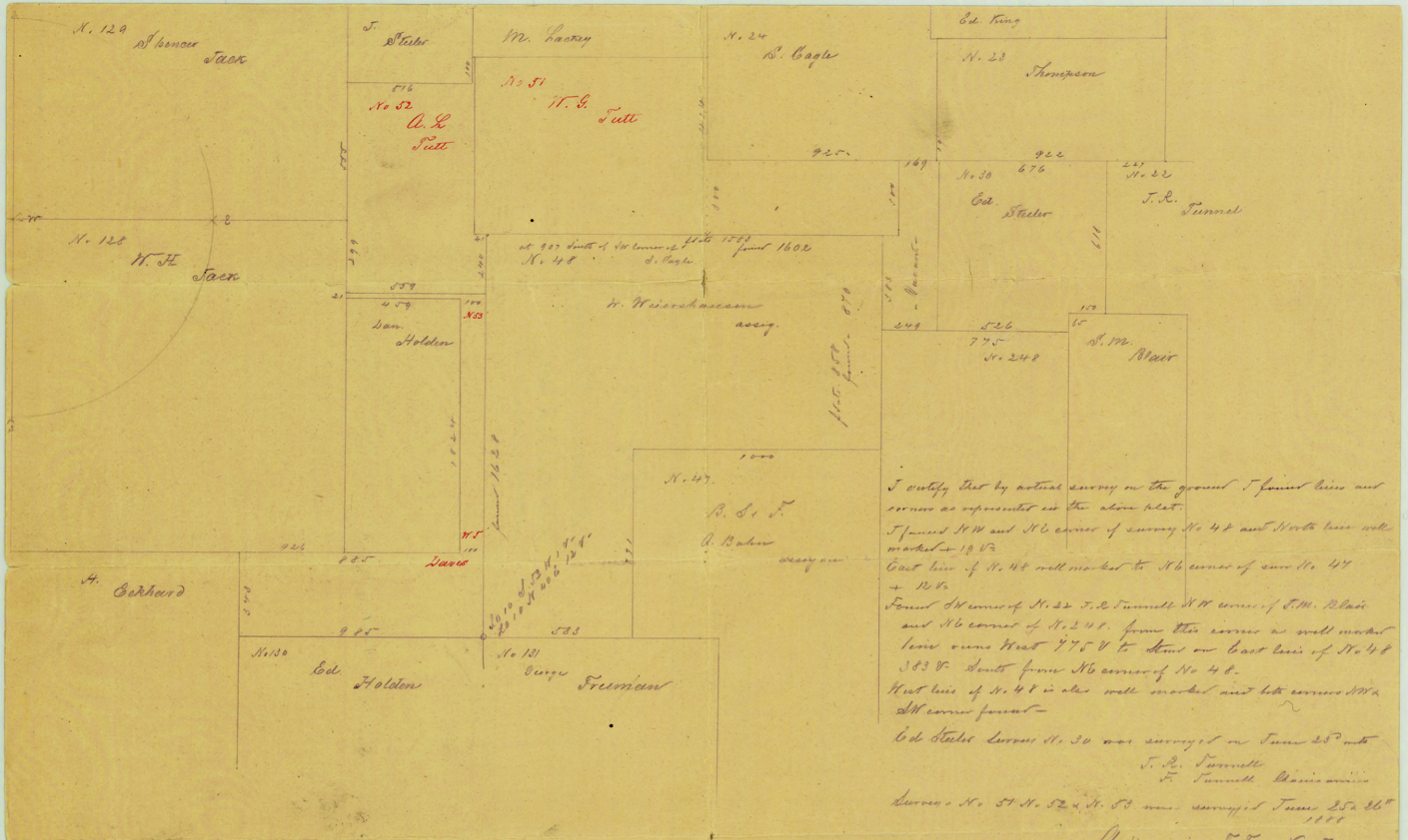


File 27.

Blanco County

Filed Dec. 14th, 1888.

9 Mi. West Johnson City



I certify that by actual survey on the ground I found lines and corners as represented in the above plat.

I found NW and NE corner of survey No 48 and North line well marked + 19 V.

East line of No 48 well marked to NE corner of survey No 48 + 12 V.

Found SW corner of No 22 J. R. Tunnell NW corner of S. M. Blair and NE corner of No 248. from this corner a well marked line runs West 775 V to stand on East line of No 48 383 V South from NE corner of No 48.

West line of No 48 is also well marked and both corners NW & SW corner found -

Ed Steeler Survey No. 30 was surveyed on June 28th 1888
 J. R. Tunnell
 F. Tunnell Blair

Survey No 51 No 52 & No 53 was surveyed June 25th & 26th 1888

Chain carriers F. Ford & K. Ford

Blaine Blaine Co
 Tex

P. S. Appell
 Co. Surv. Blaine Co.

Filed in Gen^l Land Office
 Decemb. 14th 1888

R. S. Shueley
 Chief Clerk.

No. 27