

File 28

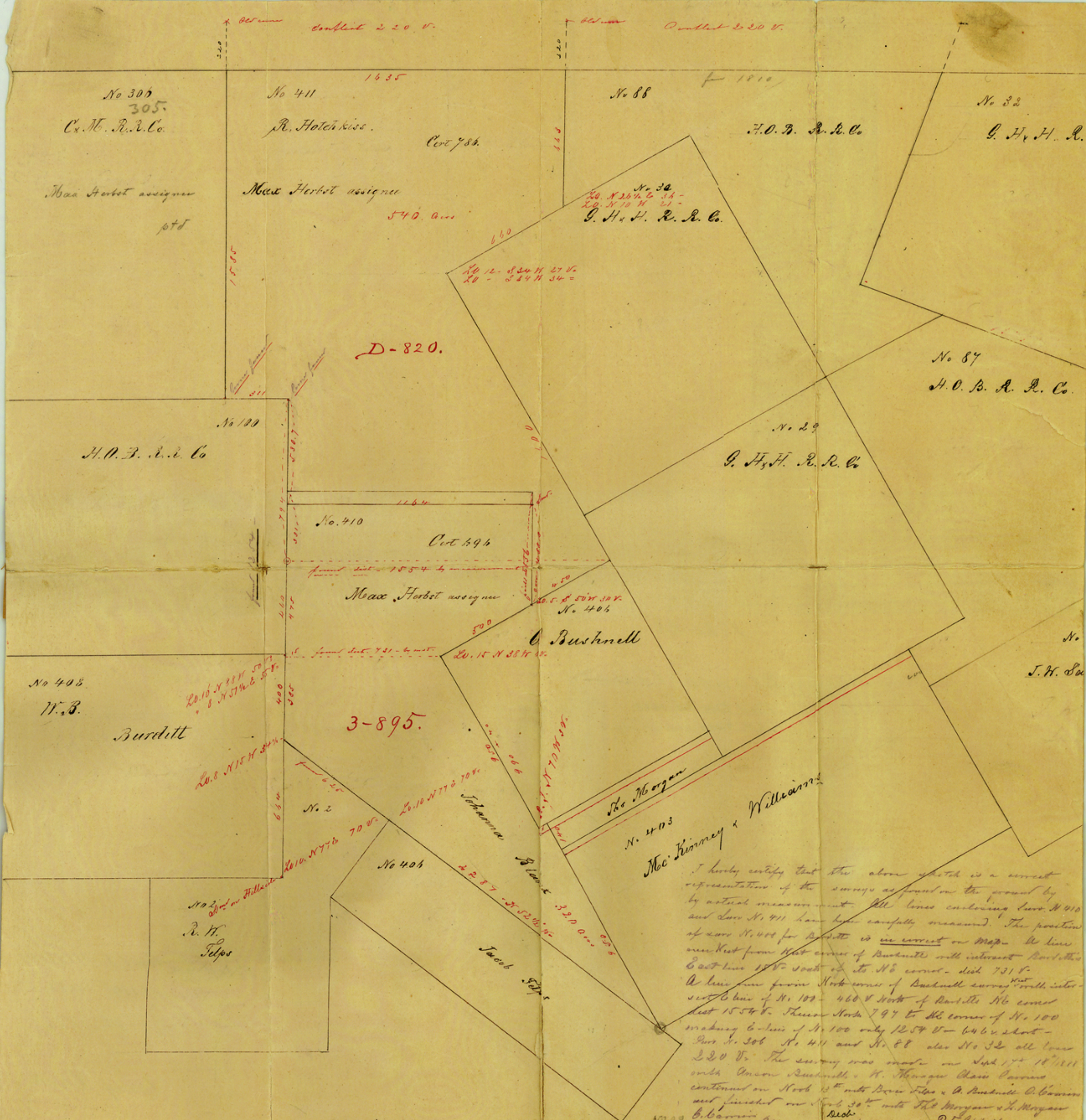
Blanco County

*Filed Dec. 14, 1888.
6 Mi. S 40 E Johnson City.*

*Filed in Gen^l Ind Office
Decemb. 14th 1888.*

R. Shulley

Chief Clerk.



I hereby certify that the above sketch is a correct representation of the surveys as found on the ground by actual measurement. All lines enclosing lots No. 410 and Lot No. 411 have been carefully measured. The position of lot No. 404 for Burditt is in correct on Map. A line runs from West corner of Bushnell with interest Burditt's East line 15th to South of its N.E. corner - dist 731^{ft}. A line runs from North corner of Bushnell survey with interest Burditt's line of No. 100 - 460^{ft} North of Burditt's N.E. corner West 1554^{ft}. Thence North 797^{ft} to N.E. corner of No. 100 making 6 lines of No. 100 only 1254^{ft} - 646^{ft} short - Lots No. 306 No. 411 and No. 88 also No. 32 all have 320^{ft}. The survey was made on Sept. 17th 1888 with Anson Bushnell, H. Morgan Charles Garrison continued on North 15th into Davis Selpe & O. Bushnell O. Garrison and finished on North 30th into J. H. Morgan & H. Morgan O. Garrison Charles Garrison
 Dec 4th 1888
 J. H. Selpe