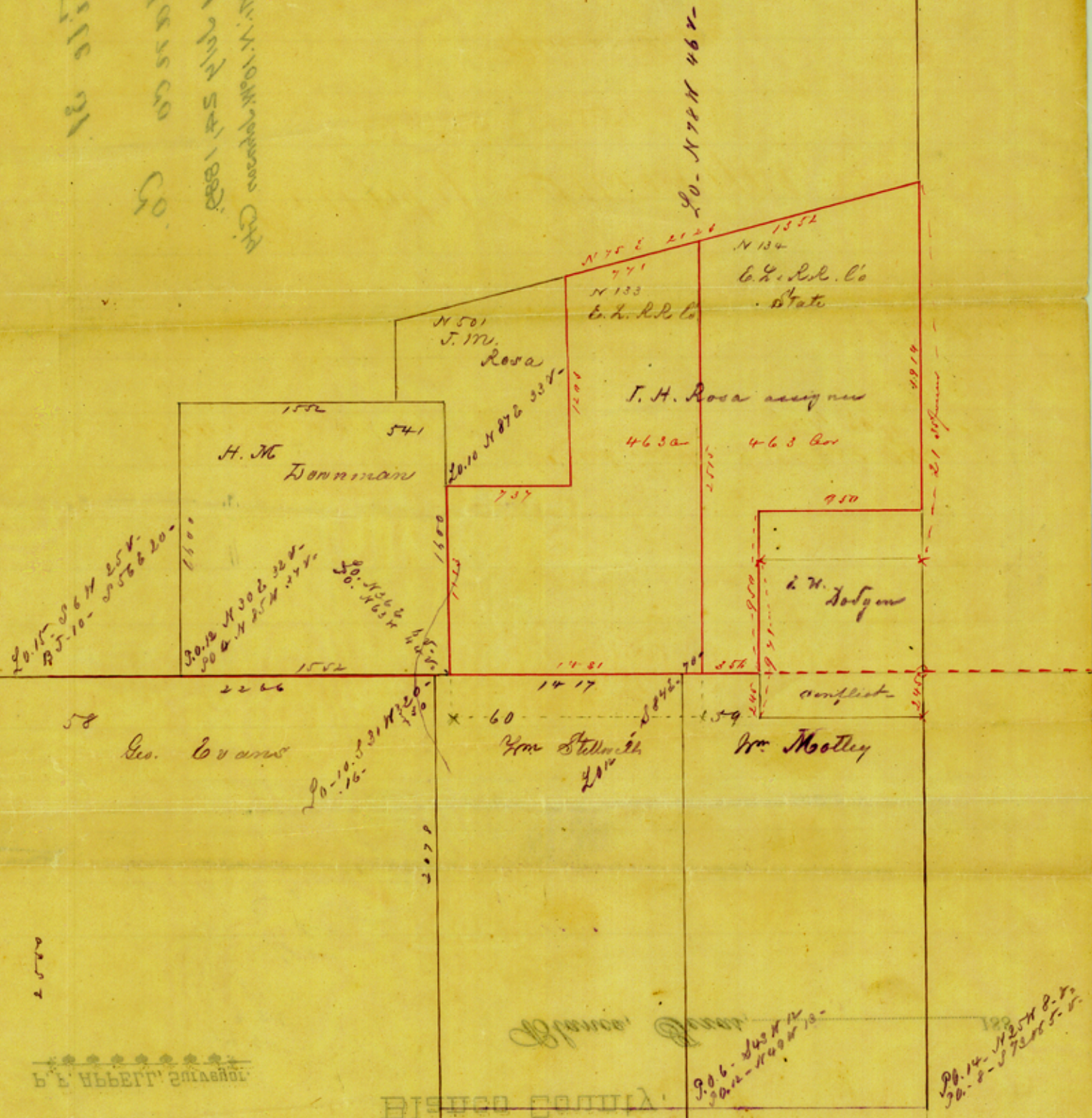


Filed at
 Bureau of
 Land Office
 Washington, D.C.



B. E. ABBETT, Surveyor

See Surveyor's letter, dated July 20/89.

It has been reported that the conflict of Dodgen's preemption is only 2000 ft.

Filed in the Genl Land Office
 July 24th 1889

R. Shumway
 Chief Clerk

Counter 14629

OFFICE OF



County Surveyor,



Blanco County,

P. F. APPELL, Surveyor.

Blanco, Texas,188

File 31.

Blanco Co.

Filed July 27, 1889.

5 Mi. N. 10° W. Johnson City