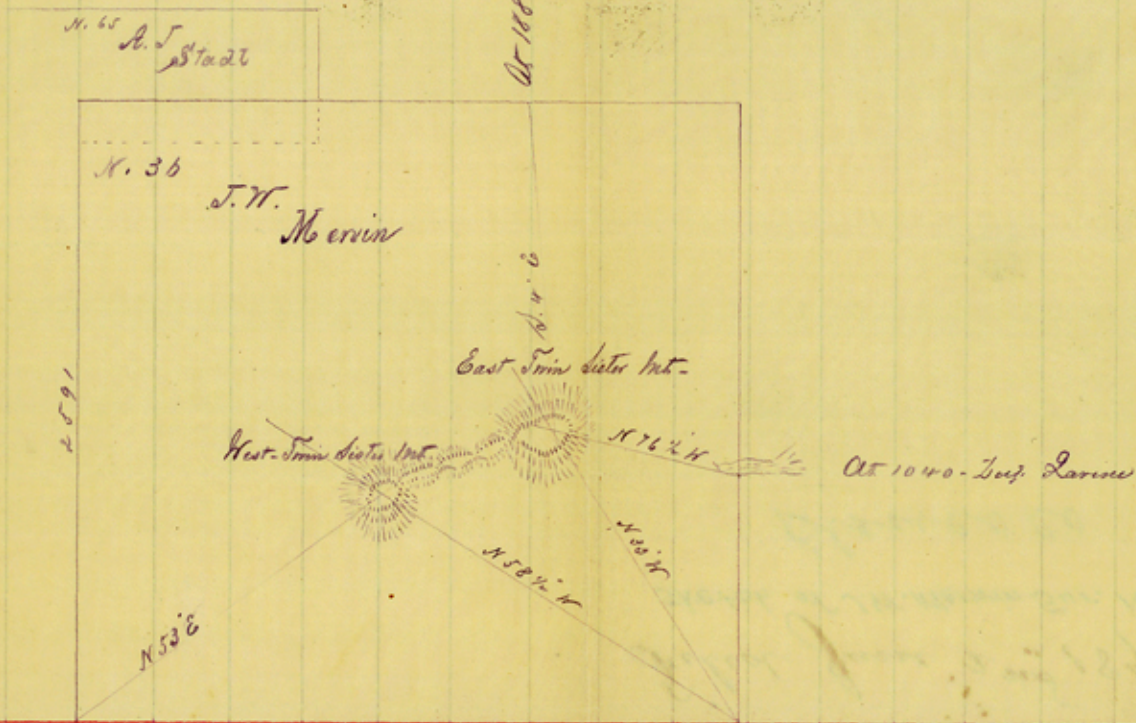


At 1000 feet from NW corner of Merwin dam.



Elevation - 2788 -  
 found - 2766 -

Situated <sup>80</sup> S + W 20 miles from Johnson City

I certify that this sketch shows position of Twin Sister Mountains as found by me, by cross bearings, taken on the ground.

P. F. Appell  
 Co. Sur. Blaine Co. Id.

File No. 39.

§ 8° W 20 Miles from  
Johnson City.

Filed June 2<sup>nd</sup> 1890,  
Sketch of J.W. Merwin Sur. No. 36.

Blanco Co

Counter 14651