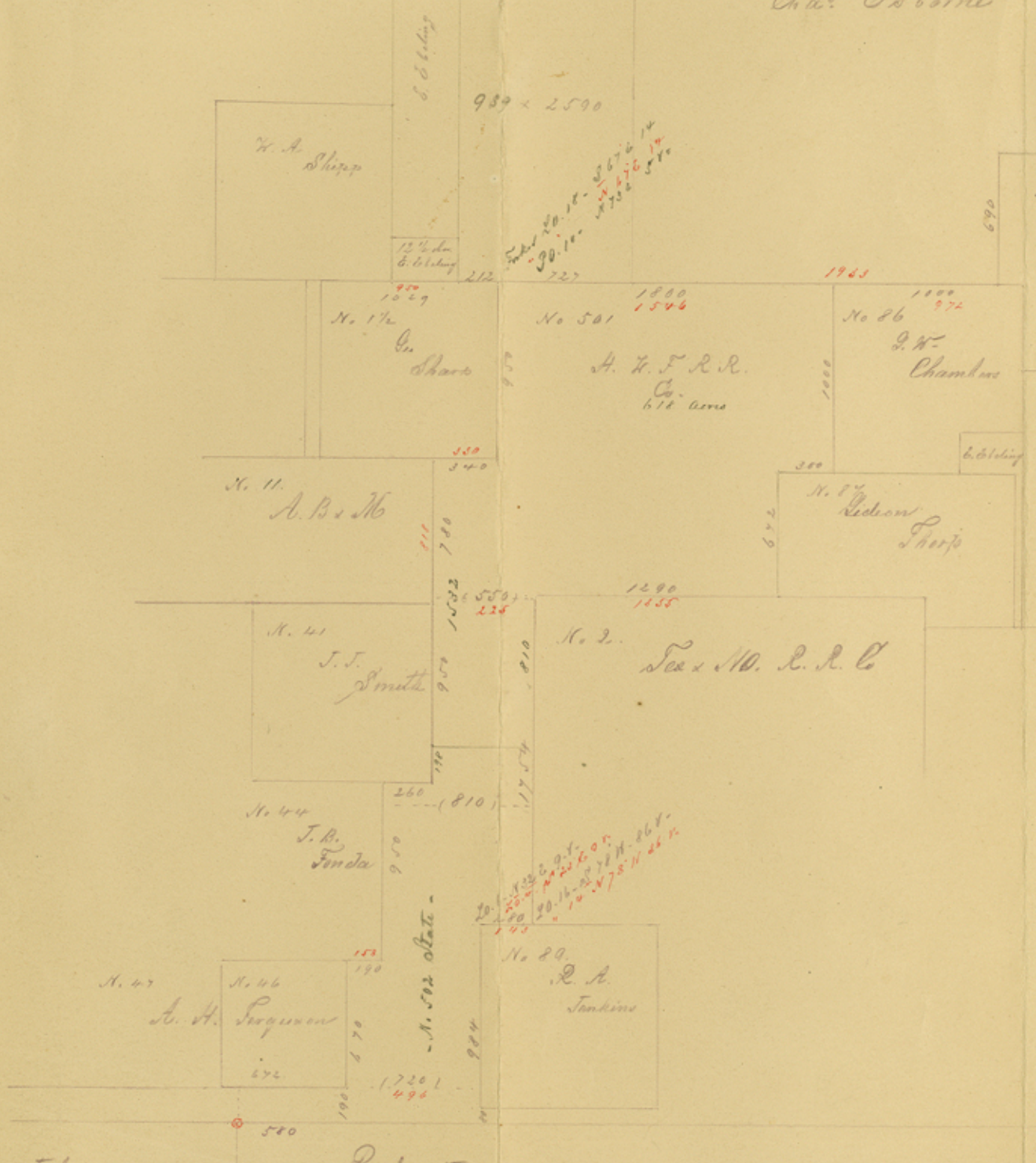


No. 87
 Chas. Osborne

Sketch of Blanco County, due North 11 miles
 from Johnson City



No. 85
 Jacob
 Le Cordova

I hereby certify, that I made a re-survey of the premises
 represented in the above plat, commencing May 12th and finishing May 27th
 and found by actual and careful measurement, surveys as represented.

P. T. Appell
 Co. Sur. Blanco Co. Tex

Figures within black denote measurements found
 Figures within red ink as found in field notes of the different
 surveys -

Field notes of surv No. 2 give bearing to N.W. corner: L.O. 14 - N 78° W 868 dist
 found " L.O. 15. S 78° W 86 "

Field notes of surv No. 89 give bearing for NW corner L.O. 4 - S 238.9
 found L.O. 6 bearing N 32° E 98

23 reversed to 22 and N. to S. -

Found N. line of No. 501 - 1800 in place of 1546
 N. S. line of surv No. 17 1/2 1029 in place of 950 - N. line of Charles 1800 in place of
972
 N. line of No. 2 from NW corner to West. line of surv No. 87 - 1290 in place of
1350
 Dist between surv No. 2 F.R.R. and E. line of J.J. Smith 550 in place of
225
 Dist E. NW corner of R.A. Jenkins 280 in place of 143 -
 " " " " S.B. Fonda 190 " " 158 -
 " between Ferguson surv. and Jenkins 720 in place of 496 -
 Found for plat of T.S. & M.L.R.C. surv No. 501 - 502 12 36 Acres
 in field notes only " " 914 "
 diff 322 "

Scale 1" = 400' per inch
 County 14654

John
 Gilbert

Robert
 Maize

File No 41.

Blanco County

13 miles N 10° E from
Johnson City

Filed June 2nd 1890.