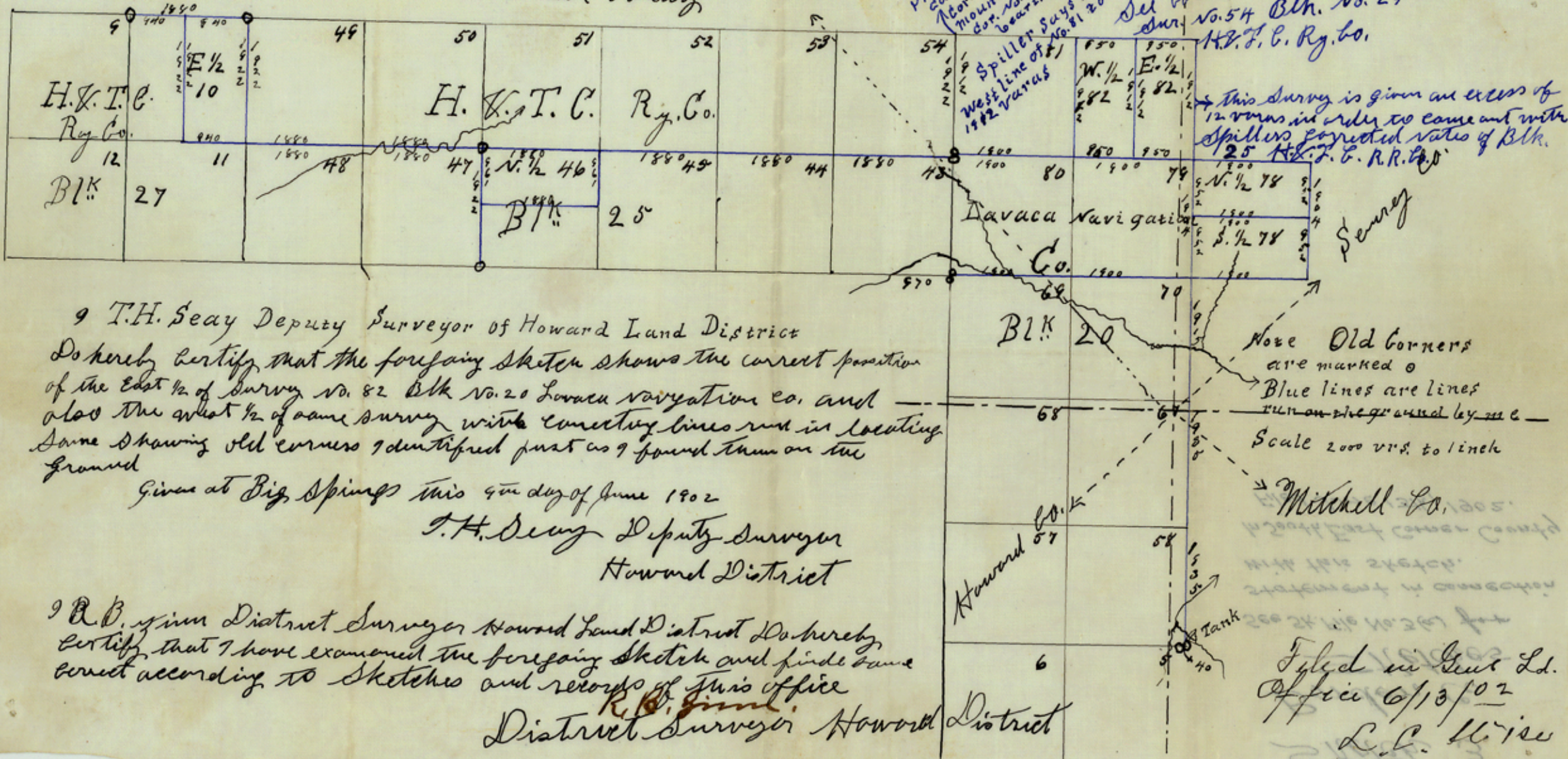


Borden County



I T.H. Seay Deputy Surveyor of Howard Land District
 Do hereby certify that the foregoing sketch shows the correct position
 of the East 1/2 of Survey No. 82 Blk. No. 20 Davaca navigation co. and
 also the west 1/2 of same survey with connecting lines and in locating
 same showing old corners identified just as I found them on the
 ground

Given at Big Springs this 9th day of June 1902
 T.H. Seay Deputy Surveyor
 Howard District

I R.B. Ginn District Surveyor Howard Land District Do hereby
 certify that I have examined the foregoing sketch and find same
 correct according to sketches and records of this office
 R.B. Ginn
 District Surveyor Howard District

Note Old Corners
 are marked ○
 Blue lines are lines
 run on the ground by me
 Scale 2000 vrs. to 1 inch

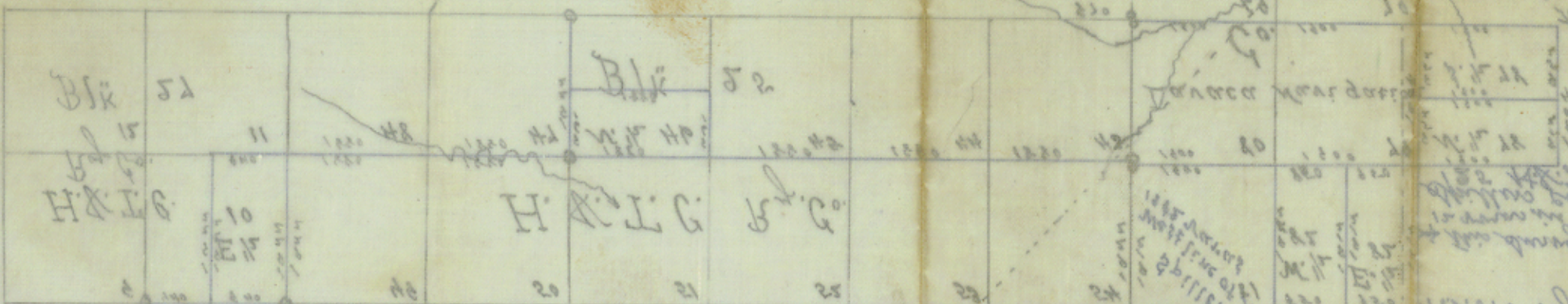
Mitchell Co.
 Filed in Genl. Ld.
 Office 6/13/02
 L.C. Wise
 Counter 14703

Sketch 3.

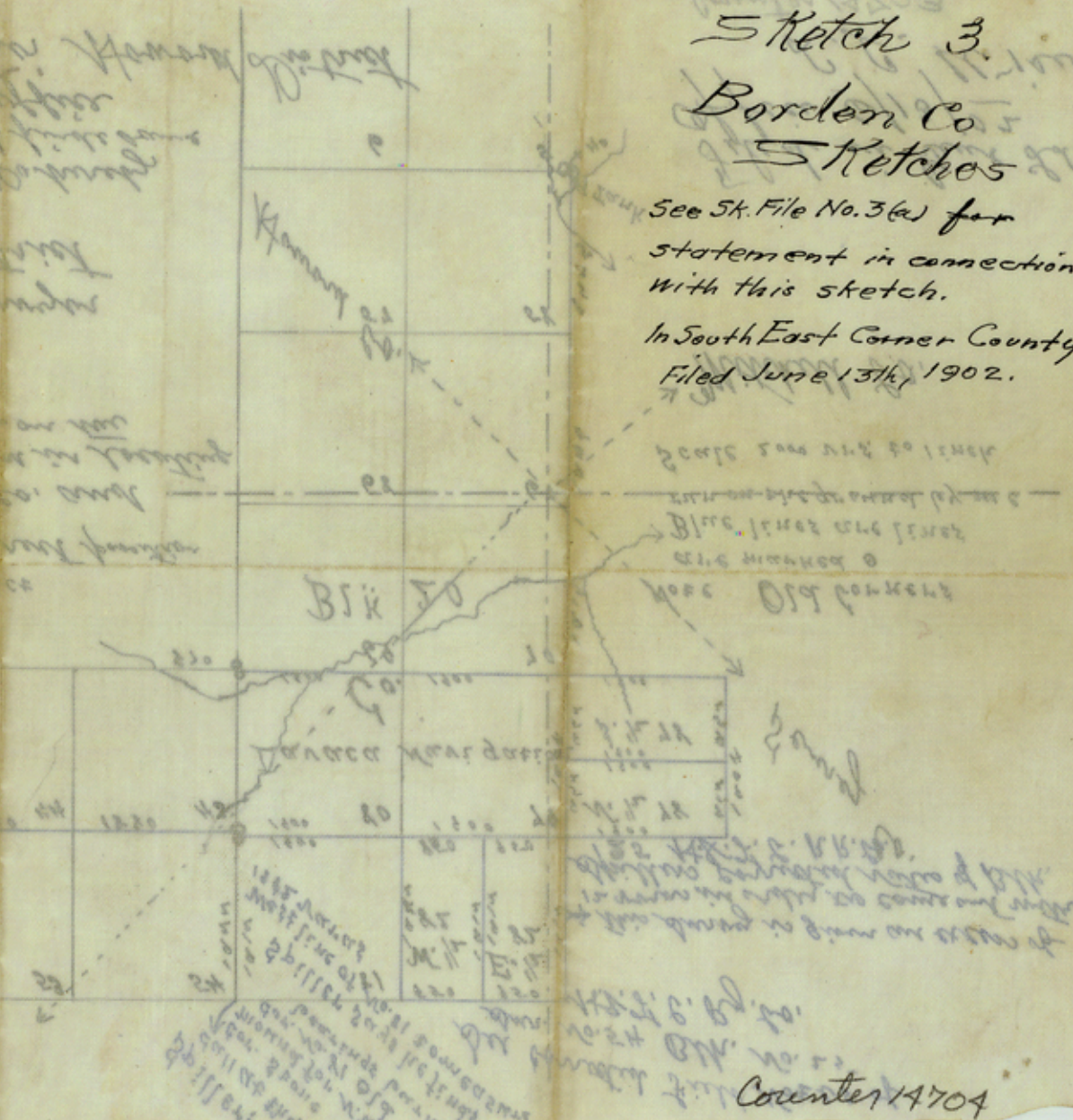
Borden Co
Sketches

See Sk. File No. 3(a) for
statement in connection
with this sketch.
In South East Corner County
Filed June 13th, 1902.

(Mirrored bleed-through text from the reverse side of the page)



(Handwritten note below the diagram)



Counter 14704