



File # 5

Milam District

Bosque Meridian & Neels Cr.  
 received Nov. 29. 1847.  
 Plotted on map. Nov. 30. 47.

Bosque County

1. W. of Meridian.  
 Vicinity Meridian & S.W. <sup>wd.</sup>



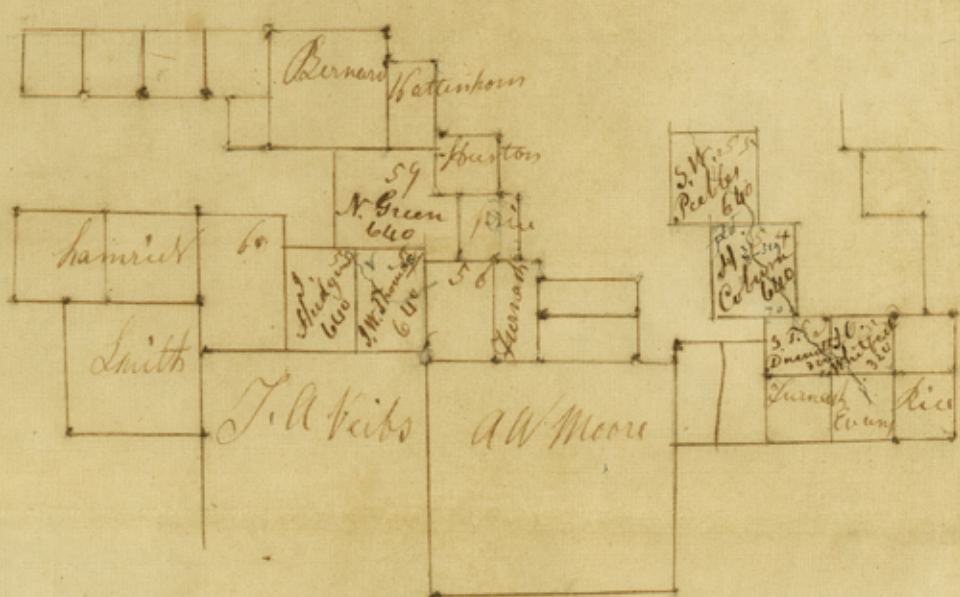
*[Faint, illegible handwritten notes or a list of names, possibly related to land parcels or survey data.]*

Counties 14746



31. Davis - Campbell  
31. John M. Bud

53. L. J. Deane



Webster Armstrong  
Vicinity Meridian + 5<sup>th</sup>

State of Texas  
District of Milam I do certify that the above sketch  
is a correct representation of the survey returned  
to this office by George Green Esq Surveyor of  
said district  
Given at Caldwell this 25<sup>th</sup> day of November 1847  
James Howlett  
District Surveyor