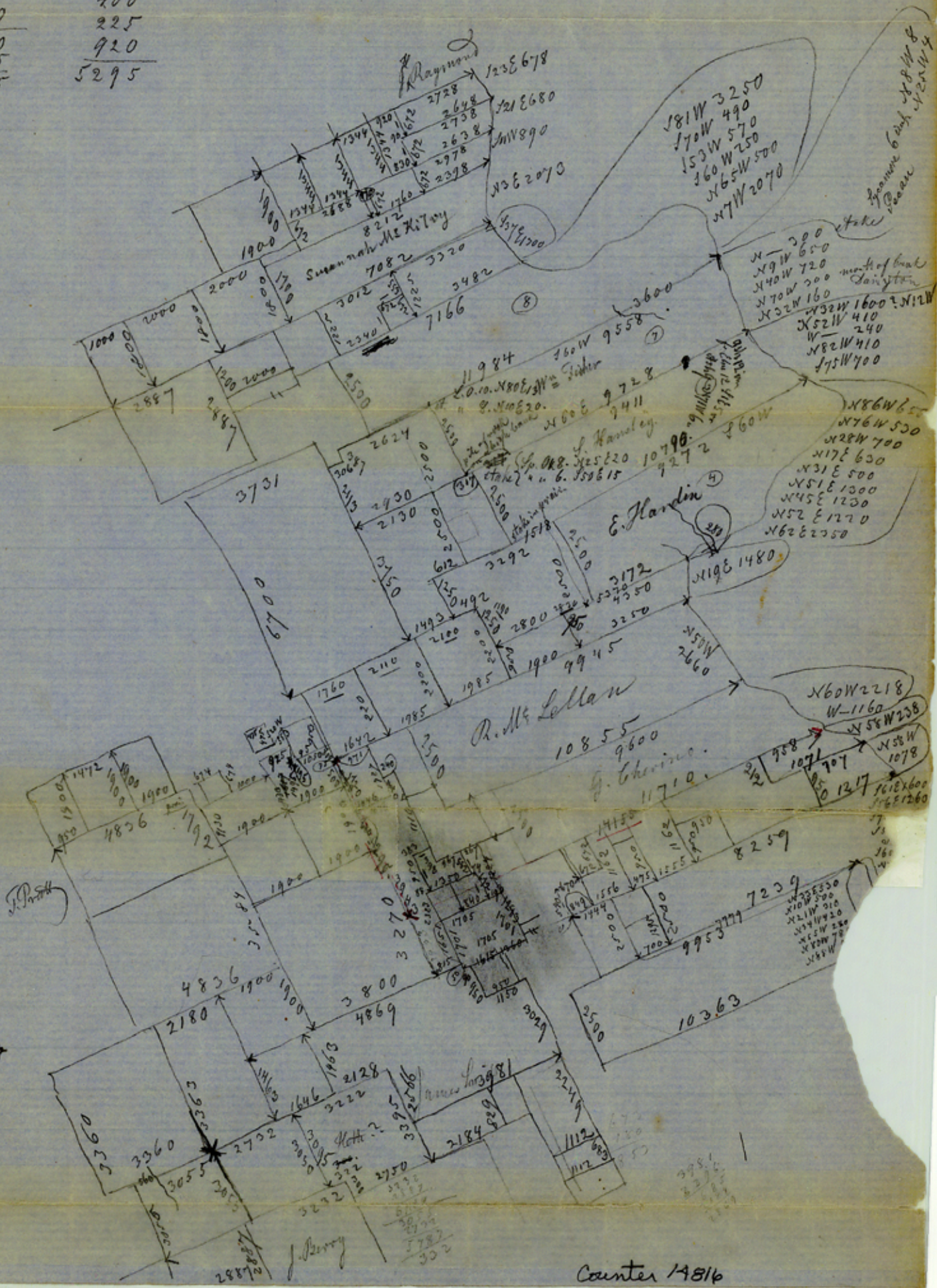


300	30
200	125
200	400
300	425
100	250
120	375
50	625
140	300
300	375
50	300
400	260
160	65
11710	400
14230	225
75	920
14155	5295



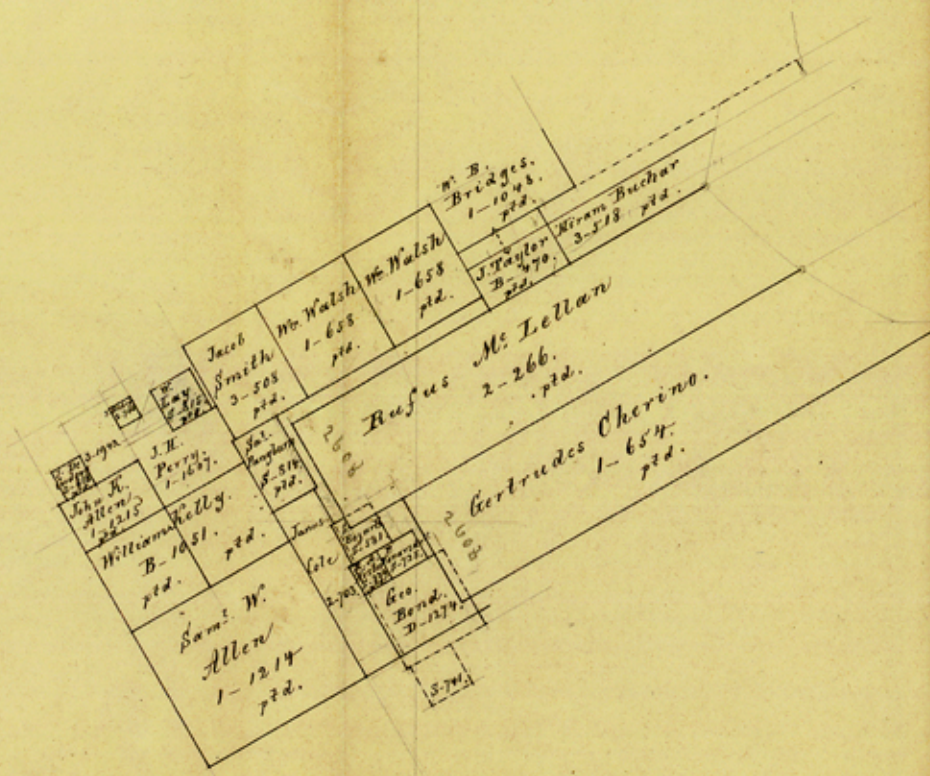
Bosque County
St. File No. 29

S.E. of Meridian

Compiled in Office according
to Connection furnished in file 12.
January 21/63.

8 Mi. S. 70° E. Meridian.

See surveyors letter
within. S. H.



Counter 14818