

File 10.

St. File No. 10

Brazoria County

20 Mi. N. 30° E Angleton

Sketch

Surreys on Mustang Bayou

18 Mi. N. 30° E Angleton.

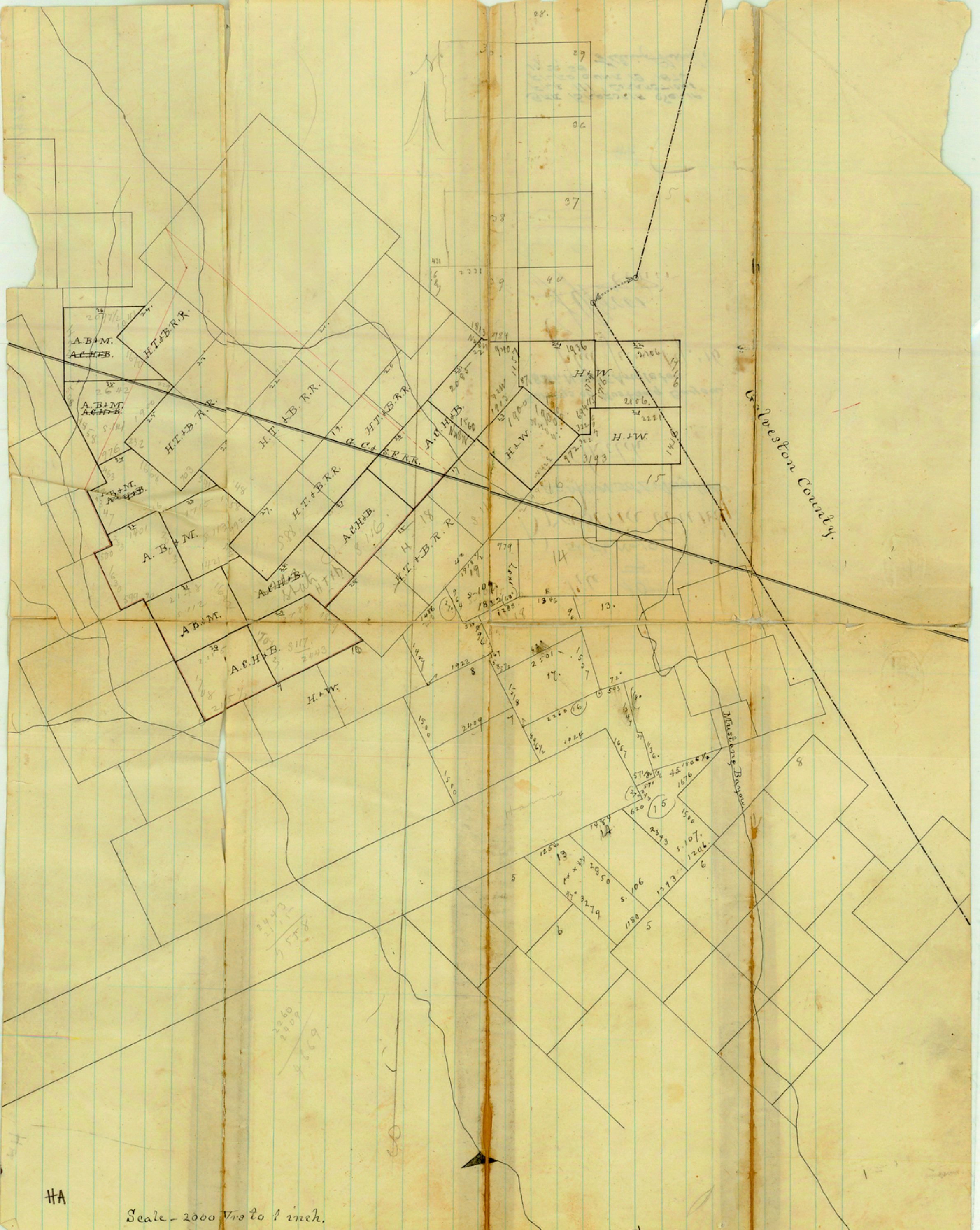
Filed June 19, '76

J. W. Moore
Clerk

Correct.

HA'

SEE BRAZORIA SERIP
FILE III "CORRECTIONS"
FILED JUNE 19 1876
10/22/38 William Sheriff



HA

Scale - 2000 ft to 1 inch.

Counter 14939