

Brazoria Tx. Aug 28-1886  
Va 9° 28' E

Field notes of connections run and measured to determine the relative positions of the several surveys herein mentioned & shown <sup>on</sup> accompanying sketch. Beginning at a stake on a hedge row, on the north line of the Francis Bingham league, 7419 ~~is~~ east from the N.W. cor of same & formerly established by me for the N.E. cor of a 200 acre block known as the Bingham homestead out of said league & on which the surviving family of Francis Bingham now reside. The NW cor of the league has no marked corner tree yet standing but I found the marked line plain on the trees <sup>(for a distance)</sup> East 7419 ~~is~~ to said point. Besides this has for many years been recognized & respected as the Northern line + N.W. cor of the Bingham League. Thence E. 2448 ~~is~~ to a point for the NE cor of said league, 640 ~~is~~ East of the H. T. + B. Ry track. whence the head timber on Chocolate Bayou, or upper tree, brs N 65½ E + Arcola section or station house bears N½ W. Thence E. 10702 ~~is~~. Thence S. 404 ~~is~~ to a large Cedar post in prairie, long respected as the West cor. of the Chas. Prescott sur. on Chocolate Bayou whence the old line runs on a Cottonwood tree on Bayou brs N 63 E 377 ~~is~~. From this point, after making many offsets, and searching at proper points for the corners of the Oliver Hall & the Erastus Little surveys & finding none, it was North 19098 ~~is~~ to a point here designated, for convenience, as point "A." Thence E. 4155 ~~is~~ to the S.W.

Brazoria Co. Sk.  
File # 12

corner<sup>in ground</sup> of W. F. Dobson and SW cor of C. J. Hall surveys 390<sup>rs</sup>  
S. of Clear creek whence the line N. was plainly marked  
Through the timber N. of creek. I further verified  
this cor by ranging thence W. 1213<sup>rs</sup> and found the  
line marks on the timber North on Creek. for the W.  
line of said Hall-sur. Measuring thence Westward  
and searching for the corners of the O. Pitts and  
S. G. Hainie & failing to find any corner tree or  
reliable mark at proper courses & distances  
for said corners. I then measured from  
point "A" West 498<sup>rs</sup> & North 6026<sup>rs</sup> to an  
iron stake & two wooden ones driven together in  
the ground on a fence line 320<sup>rs</sup> South of  
Sims Bayou for the S.W. cor of Jas Hamilton sur  
N<sup>o</sup> 101, the common cor of two other Jas Hamilton & of  
J.W. Moody surveys. It being in correct position two  
miles E. & two miles S. from the identified S.W. cor  
of sec N<sup>o</sup> 1028 near the old "ten mile station house."

The locations of creeks, railroads, and other  
specific data are fully given on the accompany-  
ing sketch, representing the same as found by  
measurement on the ground -

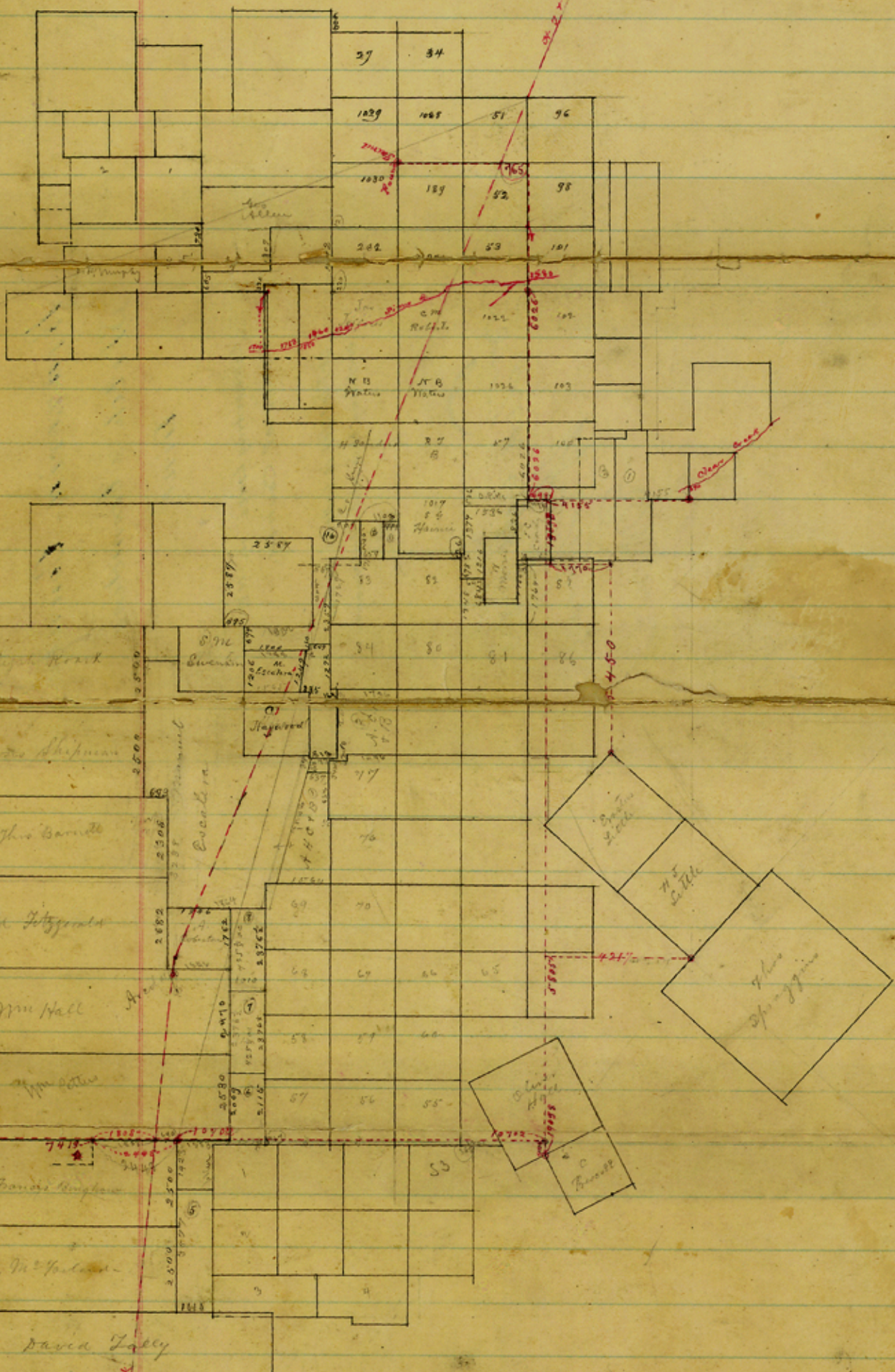
Chas Bass } Ch.  
Surveyed July 27<sup>th</sup> & 28<sup>th</sup> 1886. } P.A. Booker } Ca.

I, R. B. Harris Sur. Brazoria Co. hereby certify  
that the foregoing survey was actually made in  
the field as above stated and as shown on  
the accompanying sketch.

R. B. Harris  
Surveyor Brazoria Co

Sketch 12.

+7'



See SK. in S. 154

Counter 14969

+ 7<sup>2</sup>

12.

Brazoria County  
Sketch & Connecting  
Line

Connecting Lines in NE  
Corner of County.

sk File 12(a) is Collett's Letter  
enclosing this sk. & statement.

Filed Sept 8/86  
W. C. Marsh  
Comr

Connection &  
Sketch p. 1

W. C. Marsh

Counter 14970

L 173