

Sketch File No. 38

Brazoria County

E. N. Gustafson's Sk. showing  
small S.W. portion of County

Filed April 13th - 1933

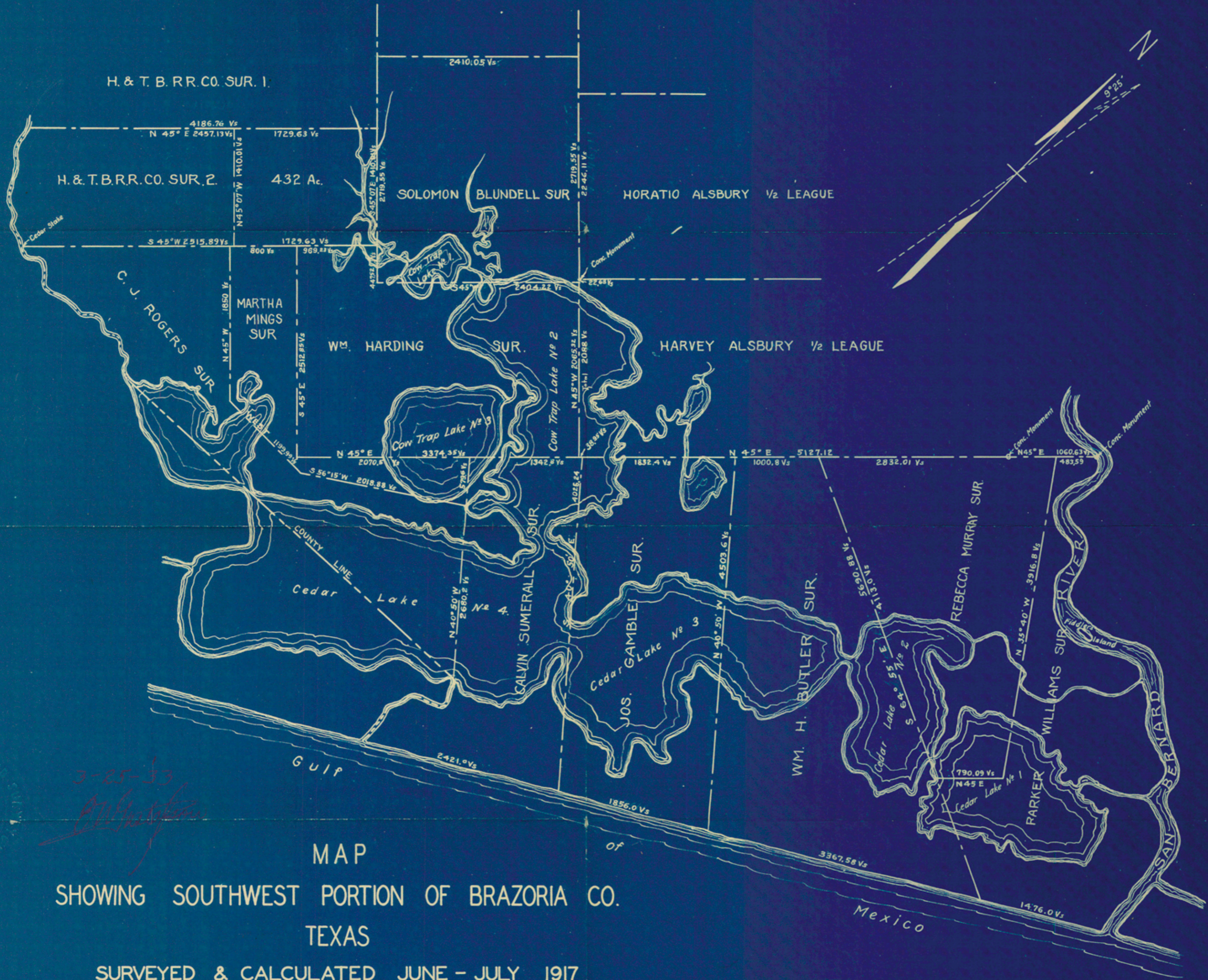
J. H. Walker, Comm.

C. F. Blucher  
File Clerk

Descriptive: 2.0 Mi. S. 2.0 W. of  
Angleton.

Pa'

Counter 15043



MAP  
 SHOWING SOUTHWEST PORTION OF BRAZORIA CO.  
 TEXAS

SURVEYED & CALCULATED JUNE - JULY 1917

SCALE : 1 IN. = 1000 VRS.

E. N. GUSTAFSON, C. E.  
 BAY CITY, TEXAS.

Counter 15014