

Sketch File No. N. 7.

(North) BREWSTER County

Office Sketch (McDonald)

Bk. W. J. G. & G. C. S. F. Ry. Co.

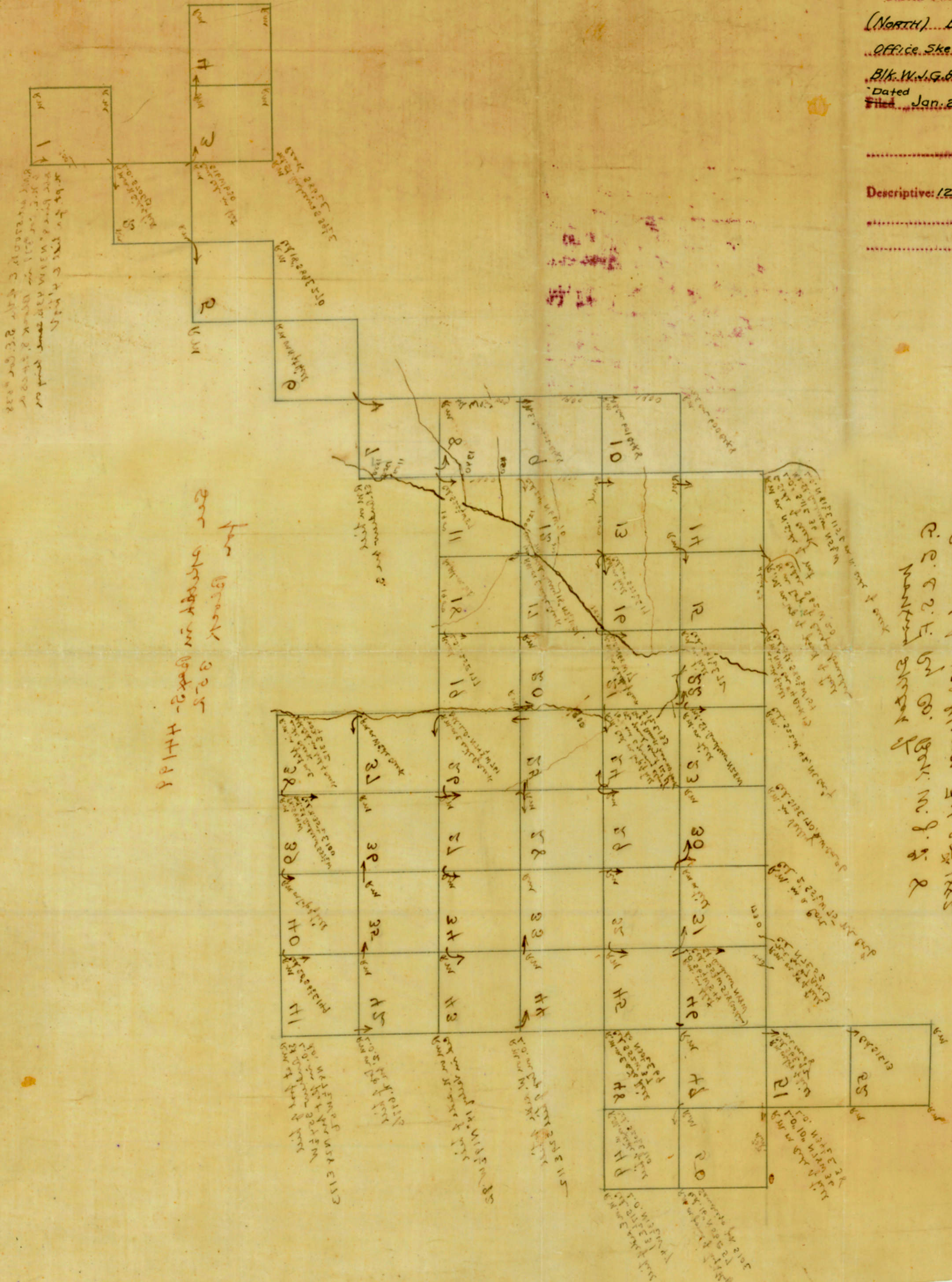
Dated Jan. 24, 1914. -191-

J. H. Walker, Comm.

File Clerk

Descriptive: 12 Mi. S. 20 E. Alpine

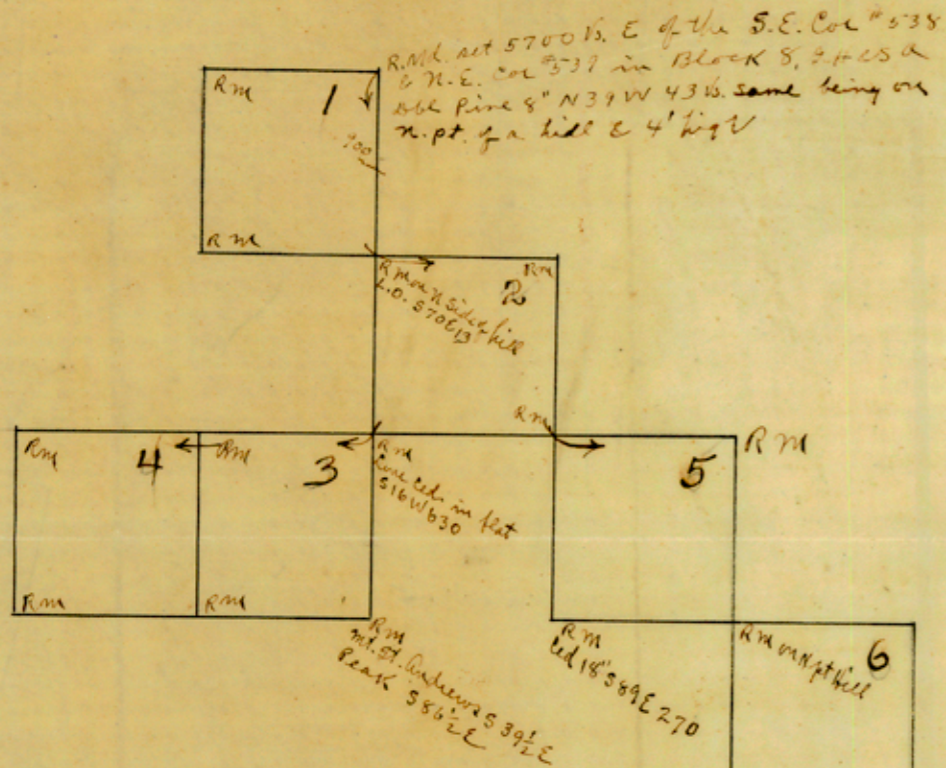
Counter 15608



The Block
See sketch in
box 2-4411

S. 20 E. 12 N. 1/4 1/4
 Section 11
 Surveyed by W. J. G. & G. C. S. F. Ry. Co.
 C. E. F. H. & B. W. J. G. & G. C. S. F. Ry. Co.
 March 1885

Counter 1200



See sketch in Box S-44199
for Block 352



Working sketch of
G. G. & S. F. Ry Co. Ber. W. J. 2 8

Surveyed by W. J. Glenn, Feb 20th 1882
R.M. 11° E

Sketch made in G. 20. 1/24/1914
2000 ft = 1 inch

Section File No. W. J.
BENNETT CORP
W. J. Glenn, Comm.
Dated
W. J. Glenn, Comm.
Dated
W. J. Glenn, Comm.
Dated
W. J. Glenn, Comm.
Dated
W. J. Glenn, Comm.
Dated

8021 return

Counter 15609