

194
193

File No. N 15

Brewster County

Surveyors Sk.

Filed 1-31-40

JOE PARKER, Com'r

White

File Clerk
Part of Blk 10-6-N-39

PLAT OF SURVEY
MADE FOR
JOE PARKER
IN
BLOCK 10 - G.H.S. BARY. CO.
BREWSTER COUNTY
TEXAS

Jan 2 1940
Vol. 11 40'E

ALPINE, TEXAS
SCALE 1" = 1000 YDS.

John Stovell
County Surveyor



RECEIVED
JAN 17 1940
REFERRED TO MAP
Carter 1566A



- LEGEND
- Original Corners with Bearings
 - Fences
 - - - Sub-divisions
 - == Roads
 - ⊗ Windmills
 - ∩ Earth Tanks

I, JOHN STOVELL, COUNTY SURVEYOR OF BREWSTER COUNTY, TEXAS, DO HEREBY CERTIFY THAT THIS MAP TRULY PRESENTS A SURVEY AS MADE BY ME ON THE GROUND, ACCORDING TO LAW, JAN. 18 2. 1940.

John Stovell
COUNTY SURVEYOR
BREWSTER COUNTY, TEXAS

RECEIVED
JAN 30 1940
REFERRED TO MAP

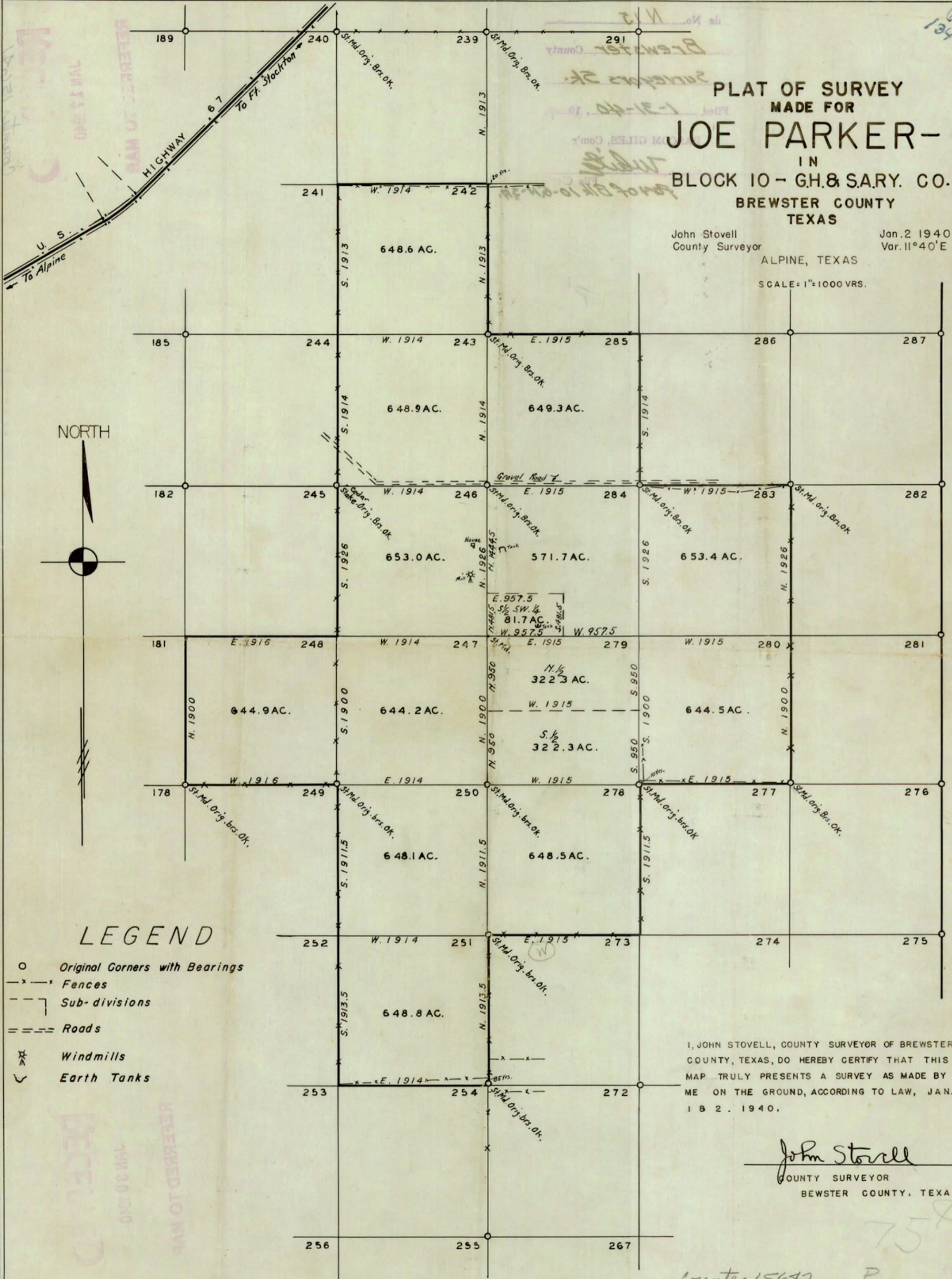
Carter 1566A

69
131

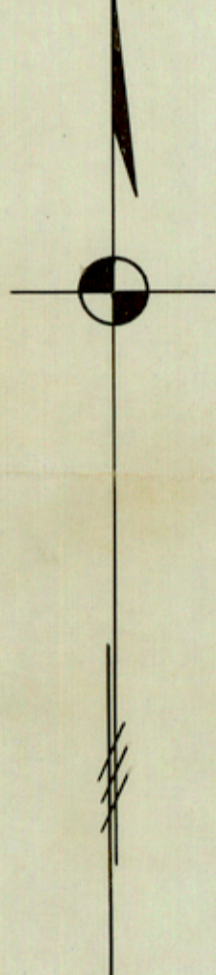
PLAT OF SURVEY
MADE FOR
JOE PARKER-
IN
BLOCK 10 - G.H. & SARY. CO.
BREWSTER COUNTY
TEXAS

John Stovell
County Surveyor
ALPINE, TEXAS
Jan. 2 1940
Var. 11° 40' E

SCALE = 1" = 1000 VRS.



NORTH



LEGEND

- Original Corners with Bearings
- x-x- Fences
- - - Sub-divisions
- == Roads
- ⊗ Windmills
- ∨ Earth Tanks

I, JOHN STOVELL, COUNTY SURVEYOR OF BREWSTER COUNTY, TEXAS, DO HEREBY CERTIFY THAT THIS MAP TRULY PRESENTS A SURVEY AS MADE BY ME ON THE GROUND, ACCORDING TO LAW, JAN. 1 8 2 . 1 9 4 0 .

John Stovell
COUNTY SURVEYOR
BREWSTER COUNTY, TEXAS

Counter 15672 P

758

RECEIVED
JAN 13 1940

REFERRED TO MAP

File No. 112
Brewster County
Surveyors Sk.
Filed 1-31-40
JAMES GILES, Com'r

RECEIVED
JAN 30 1940
REFERRED TO MAP