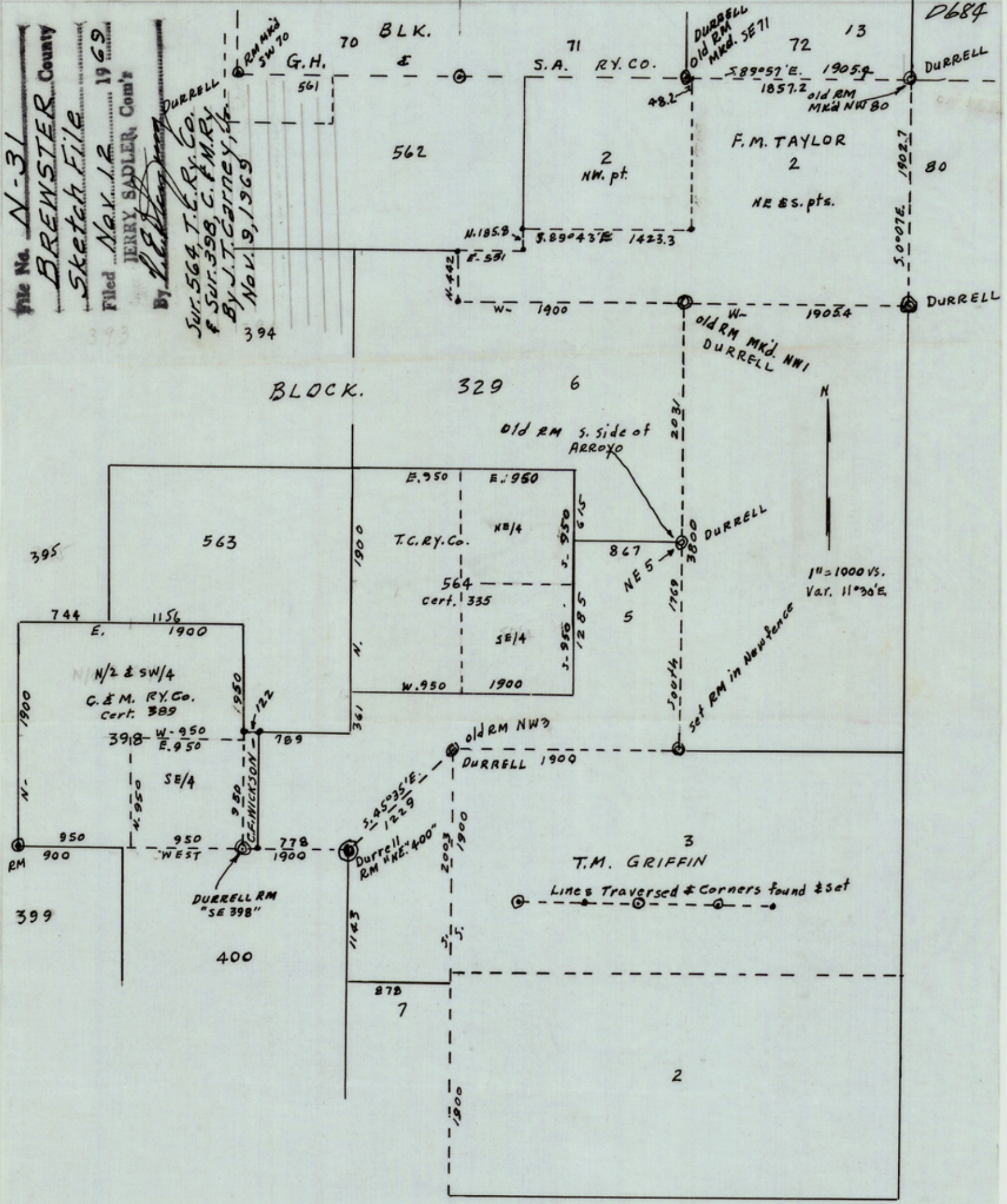


File No. N-31  
 BREWSTER County  
 Sketch File  
 Filed Nov 12 1969  
 JERRY SADLER Com'r  
 By J.T. Carney, Jr.  
 Sur. 564, T.C.Ry. Co.  
 & Sur. 398, C. & M. Ry.  
 By J.T. Carney, Jr.  
 Nov. 9, 1969



Plat to accompany Field Notes (Corrected) of Tracts in SURVEYS -  
 T.C. Ry. Co. 564, cert. 335, and C. & M. Ry. Co., 398, cert. 389, BREWSTER COUNTY,  
 TEXAS.  
 CFN's. Recorded - Vol. CFN 8 - pp. 318-322, incl.  
 Plat " " CFN 8 - p. 323, Field Note Records.

RECEIVED  
 NOV 12 1969  
 Central Land Office

J. T. Carney, Jr.  
 COUNTY SURVEYOR  
 9 November 1969

Counter 15711