

Filed Oct. 18th 1910

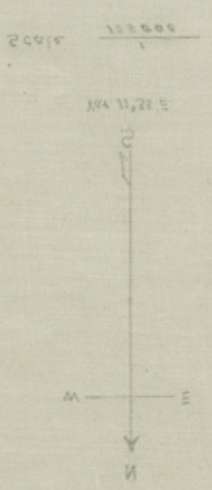
J. T. Robison Comm.

File Clerk

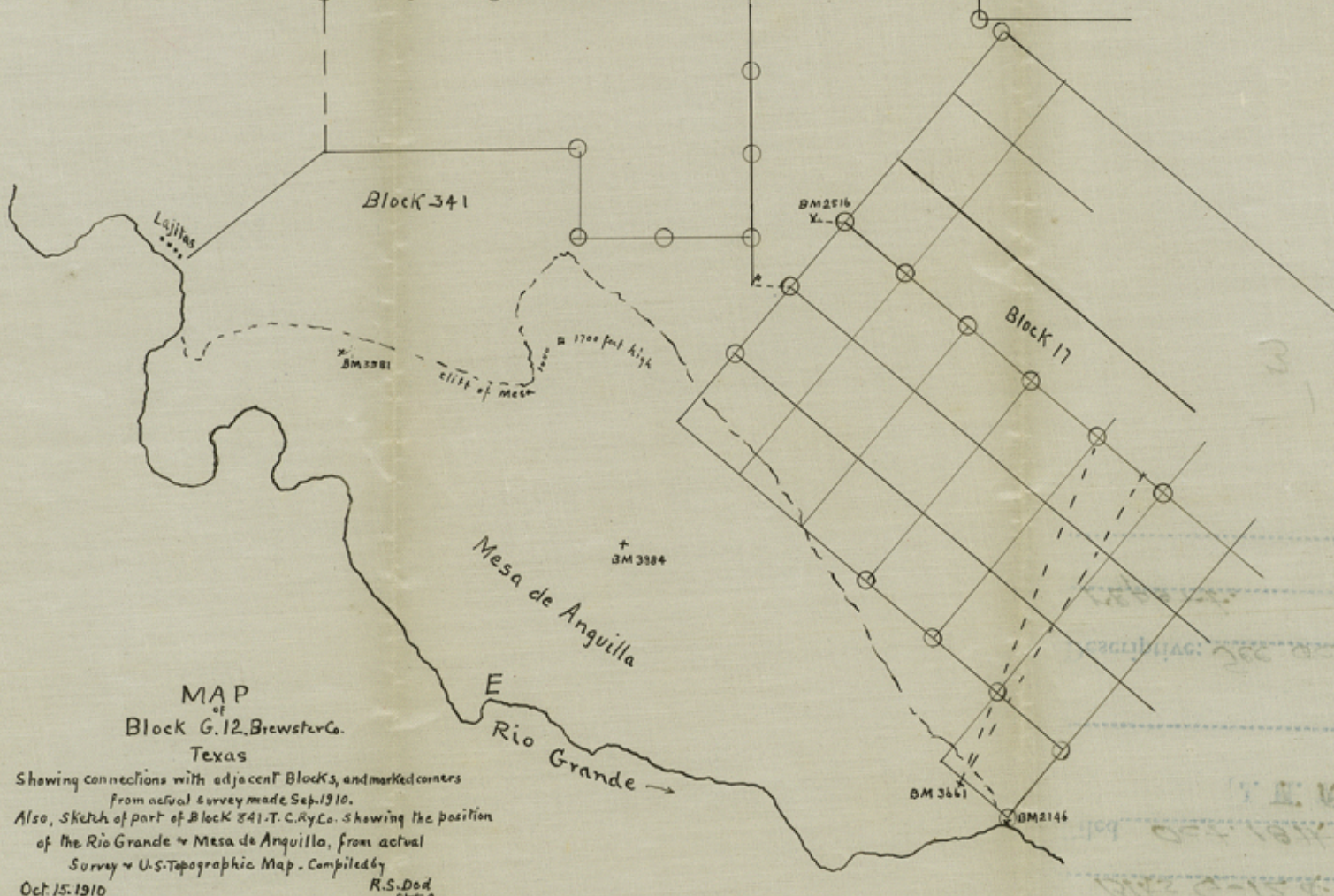
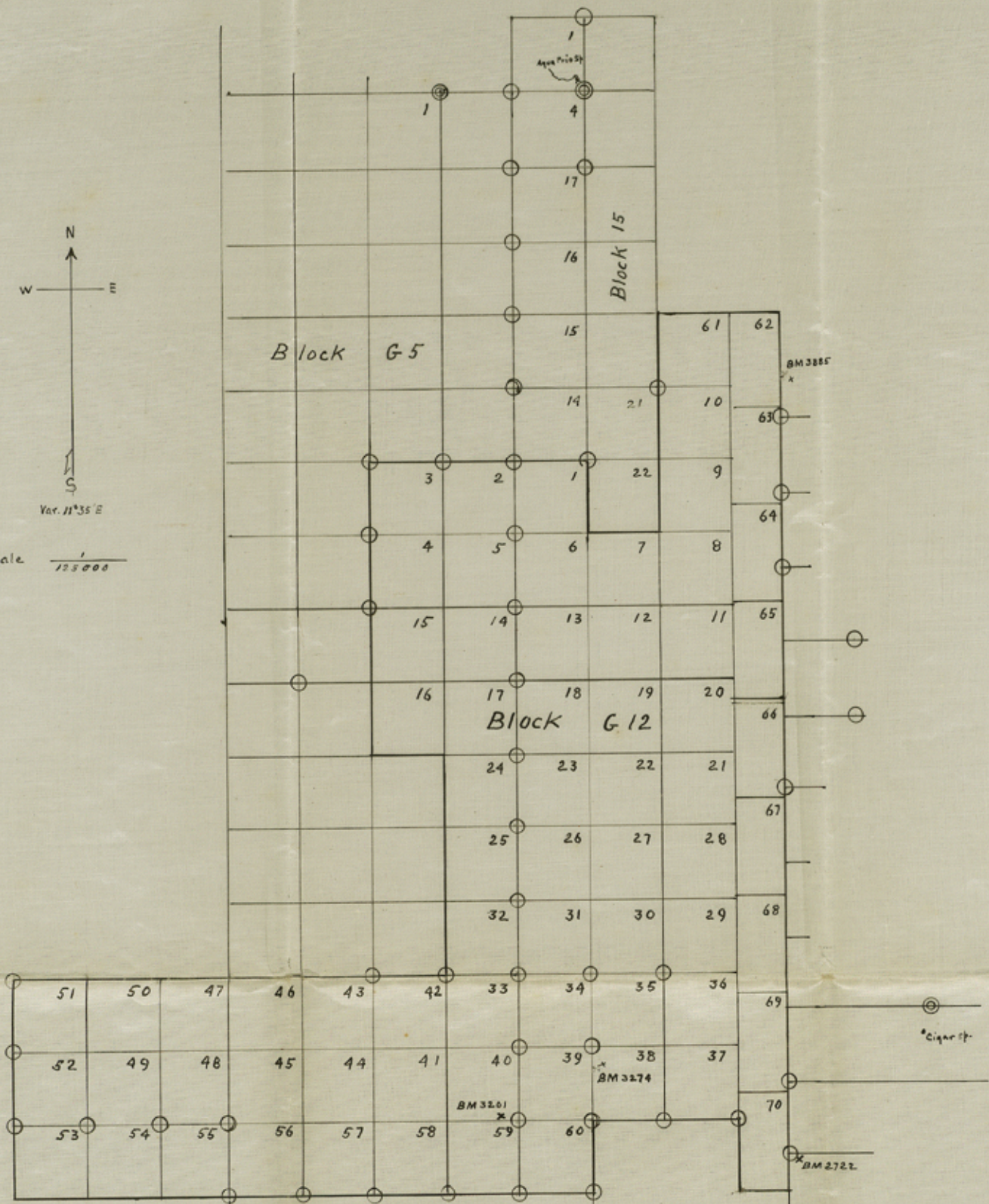
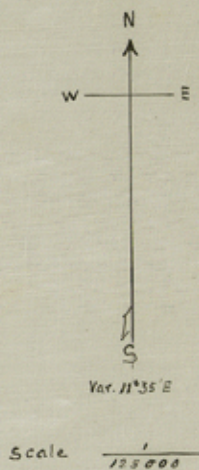
Descriptive: See accompanying report.

County 15731

04121210
K2.D04
...
BLOCK G 15
MVB



Oct 18 1910
...
R. S. Dods
...



MAP
of
Block G.12, Brewster Co.
Texas
Showing connections with adjacent blocks, and marked corners
from actual survey made Sep. 1910.
Also, sketch of part of Block 341, T. C. Ry. Co. showing the position
of the Rio Grande & Mesa de Anguilla, from actual
Survey & U.S. Topographic Map. Compiled by
Oct. 15, 1910
R.S. Dod
State Sur.

*J. R. S. Dod, State Surveyor do hereby certify, that the above is a true
and correct map of Block G.12 with connections & location of corners marked
on the ground, as determined by a survey made by me Sept. 1910
R.S. Dod State Sur.
Oct 15 1910*

3

Counter 12331

Counter 15732

17110 No. 5. 7th pt.

South Brewster Co.

Progress Report

R. S. Dod



Survey of Blocks

G 12 & No. 341

Brewster County

Oct. 18, 1910.

GENERAL LAND OFFICE
AUSTIN, TEXAS

5-2

Counter 15733

ROBERT S. DOD
SPECIAL STATE SURVEYOR

RECEIVED
OCT 19 1910

Referred to Map

*See accompanying sk
874*

ALPINE, TEXAS, Oct. 15 1910

Hon. J. T. Rebison
Commissioner Gen. Land Office
Austin, Texas,

Dear Sir,

I would submit the following report of progress in resurvey of Blk. G12 Brewster Co. Texas, as explanatory of the attached map of the work.

The beginning corner of Blk. G12 is given as the S.W. Cor of sur. 22 in Blk. 15 G.H. & S.A. Ry. Co. which corner is placed by its field notes 5 miles south of the original S.E. cor. sur. 1 in the same Blk. This S.E. Cor sur 1 is close to, and has a bearing given from Agua Frio Spring, a well known landmark, and given by Mr. Gano in his call for beginning corner of Blk. G 5, 3 miles west.

Both the S.E. corner sur 1 Blk 15, and Gano's N.E. corner sur 5. G5. were identified on the ground. The run south from the S.E. corner sur ~~2~~ 1 in Blk. 15 and west to N.E. cor. 5 in G. 5 were reported in a report of resurvey of Blk 15 made as State surveyor some years ago.

We went to the corner placed by this resurvey to mark the S.W. cor. sur 14 in Blk. 15, which would be the N.W. corner of sur ~~2~~ 1 in Blk G 12, because the line could be run directly south through the block from this corner with less difficulty and hence greater accuracy than on any other meridian, also this line running nearly with the Reed Trail, made it possible to place the corners where they could be readily found by anyone wishing to locate ~~xxx~~ surveys in this Blk.

I have marked the original corners on the map thus, resurvey corners we put in thus.

The N.E. cor. 294 Blk. G4 had already been connected with the N.E. (Spiller) cor. of 21 Blk 15. and we connected the S.E. cor 37 G12 with S.W. 295 G4,

We ran a line south from S.E. cor. 60 in G 12 and connected with the resurvey cor. of sur. 7 in Blk 17. The S.W. cor ~~295~~ 295 G 4 had already been connected with cor of 35 in Blk 17 and these connections closed fairly well.

We tied all corners to U.S. Bench marks where possible, as shown, One of the B.M.s #3066 has been covered by a dump from a prospect cut in the hill. One B.M. 3890 was on top of a mountain, about the middle of a section and no trail near it making it more difficult to find than the corner with bearings to guide the search, so we did not tie to it.

There is a B.M. at Agua Frio Spring but unfortunately this is outside the topographic sheet.

The map attached is drawn to the scale of the Topographic map so that it can be laid on the map and the relative position of B.M.s checked.

We put in what corners we thought were necessary to make it possible to determine the lines of any survey in the block without much difficulty, and taking into account the amount of time we could devote to the work and its relative importance.

The matter of mining claims was referred to in your instructions for the work but we found prospect holes and claim mounds scattered everywhere and none so marked that we could identify them on the ground.

We did connect with the corner placed near the S.E. Cor 40, by Mr. Moss as a compromise corner between the parties in a suit over boundary of claims.

We found the Moss corner 103.6 varas south of our corner and ~~51~~ 51 varas east. Where we started we found a rock mound, said to be Moss's, 51.5 north and 19.2 varas east. The next mile he was 59 north and 18 E, The next mile he was 50 north and 3.5 east. The next two miles we did not find any rock mound

The next mile he was 7 vars south and 12 east. The next mile did not find

ROBERT S. DOD
SPECIAL STATE SURVEYOR

ALPINE, TEXAS.

rock mound.

The next mile found a rock mound 41 east and 12 south. The next mile, the S.E. cor. 40 we found his corner, as stated above 103.6 south and 51 east.

Mr. Carr, and a Mr. Asketh(?) triangulated from Agua Frio to this point and the mounds shown us as their marks were nearly on a line with us in southing but Carr was a little west, and Asketh was several hundred vars west as he ran on true meridian some 1°08' west of us coming south.

The greater part of this line was fairly good running, but took time getting round the canyons, which though not deep are very precipitous and as slippery as glass.

We noticed considerable daily variation of the needle, amounting one day to something over 15'. There was some little local attraction but not serious.

We can put in more corners if you think it necessary. We have of course made permanent mounds at all corners shown and marked them and taken such bearings and made such calls as will enable any surveyor to find them from the field notes.

With regard to the mineral in this block I can only report from hearsay. The Mariposa mine had used up all their ore and offered rewards for any mineral found in that region, and themselves put a party of prospectors in the field. The report is that some ore was found but not enough to justify running the furnace and the Mariposa has finally shut down.

The peculiar feature of a great part of the ore mined here was that it was not distributed through the rock but was found in lumps and boulders, hence in looking over the old workings you see no ore and no signs of ore, and it would be possible that there were similar ore bodies still hidden, but there is no sign of it on the surface.

I will say that the conditions noted and the fossils &c found on this survey has suggested to me an explanation of the fact that no mineral has been found much north of the Colquit - Tigner on 38.

The lime hills extend north west in an apparently unbroken chain, much contorted in places but apparently continuous, but on closer examination it appears that the lime about the ore bodies is of quite a different date to that further north, and this suggests a large fault somewhere north of the Hackberry draw near N.E. 32. The conditions north are apparently favorable, the lime, shale, and calcite veins are there, but no mineral has been found, and some 5 years ago we prospected Blk 15 without finding any mineral. If my hasty conclusion as to the difference in age of the two limes is right, this would account for these conditions and preclude the idea of cinnabar in the region north of 25, 26 &c.

Respectfully

R. S. Dod
State Sur.

P.S. My instructions are to make all maps 4000 vrs or 2000 vrs to the inch, but as this is not a final map of the survey but simply a report of progress, I thought it more convenient for you to make it to the scale of the Topographic Map so that you might more readily compare them and better estimate the conditions.

21
Counter 15735

ROBERT S. DOD
SPECIAL STATE SURVEYOR

ALPINE, TEXAS, Oct 17 1910

Report of progress of Survey in Blk 341, F.C.Ry. Co.

Hon. J. T. Robison,
Commissioner Gen. Land Office
Austin, Texas

Dear Sir,

If you will kindly look over the sketch accompanying this letter, you will note that we have run south from the G 12 corners and connected with Blk. 17, and made a triangle from corner in 17 to the U.S.B.M. on the Mesa.

Also we have started a line west through 341 and will complete it by connecting at ~~the~~ Lajitas on the river. I understand that Mr. Thompson, the original surveyor of Blk 341 recently placed the corners of 37 and 38 at Lajitas where he originally made them. This I presume will be the best evidence as to the original location of these corners, but we will also connect them with the corners with bearings given in the original field notes as located at a point somewhere near E on the river in sketch.

We completed the line west and Mr. Marsh is now on the Mesa meandering the River. He will run two lines, one a meander line, and then return by way of the B. M. ~~sh~~ shown on sketch. This should give us the area embraced within the boundaries described in the field notes of 341, from G 12 to the River, and from 70 G 12 on the east and Blk. 17 and the Grande Canyon, to the original corners at Lajitas on the west.

The serious difficulty in the resurvey of this block is the impossibility of getting on or off of the Mesa without going to Lajitas, where the trail goes up. The line of the Mesa is indicated on the sketch, and this bluff is from 1000 to 1600 feet high and almost perpendicular. There are two other trails, besides the Lajitas trail, but one only can be ridden over, and it is too steep to carry stuff over for camp &c. the other can be made only on foot.

The only feasible plan seemed to be to meander the river, leaving such marks as would enable us readily to locate certain points, then come down and report the whole matter, when we could return and place permanent corners where instructed. This Mesa is good grass land, not very rough. In fact the Mexicans are cutting hay there now and bringing it to Lajitas. There are several tinajas or water holes on the Mesa but none of them available for stock, water has to be drawn out with a bucket. I mention this so that you can estimate the amount of time advisable to give to resurvey. Of course the meander of the River is necessary apart from the resurvey of the block, to complete the entire course through the county, with the exception of a little work near San Vincente.

There is a possibility of finding cinnabar along the north line and the east line of the block. Some rich ore has been found in pockets.

As reported in G4 resurvey, the mouth of the Grand Canyon is found to be some 600 varas east of where Gane's run would place it. Hence there will be considerable change in the calls for the east surveys in blk 341, but we can not figure on this till the preliminary lines are run and figured.

This will at present require no reply unless you wish to make some suggestion as to the method of resurvey above suggested.

Respectfully

R. S. Dod
State Surveyor

Counter 15736

ROBERT S DOD
SPECIAL STATE SURVEYOR

Report of Progress of Survey in Bks 341, B.C.B. Co.
ALPINE, TEXAS, Oct. 10, 1910

Received by
Commissioner, Gen. Land Office
Austin, Texas

Sketch File No. 5.2 (In 2 parts)

(South) Brewster County

R.S. Dod's Progress Report

Bks 9-12 & 341

Filed Oct. 18th 1910

J. T. Robison Comm.

File Clerk

Descriptive: See accompanying
sketch

7, 20

Respectfully

file as to the method of resurvey above suggested.

This will at present require no reply unless you wish to make some sugges-

tions on this till the preliminary lines are run and figured. Considerable change in the calls for the east surveys in Bk 341, but we can not some 500 acres east of where Gans's run would place it. Hence there will be As reported in the resurvey, the mouth of the Grand Canyon is found to be east line of the block. Some rich ore has been found in pockets.

There is a possibility of finding strata along the north line and the through the county, with the exception of a little work near San Vincente.

Necessary start for the resurvey of the block to complete the entire course of line advisable to give to resurvey. Of course the meander of the River is to drawn out with a pocket. I mention this so that you can estimate the amount of water holes on the east and west sides of the block.

It is suggested that you should have the block surveyed in the same way as the whole matter, when we could return and place the meander where it would be. The only resurvey that seemed to be to resurvey the river, leaving each only ever to be done as the other can be made only on the east side.

It is suggested that you should have the block surveyed in the same way as the whole matter, when we could return and place the meander where it would be. The only resurvey that seemed to be to resurvey the river, leaving each only ever to be done as the other can be made only on the east side.

It is suggested that you should have the block surveyed in the same way as the whole matter, when we could return and place the meander where it would be. The only resurvey that seemed to be to resurvey the river, leaving each only ever to be done as the other can be made only on the east side.

It is suggested that you should have the block surveyed in the same way as the whole matter, when we could return and place the meander where it would be. The only resurvey that seemed to be to resurvey the river, leaving each only ever to be done as the other can be made only on the east side.

It is suggested that you should have the block surveyed in the same way as the whole matter, when we could return and place the meander where it would be. The only resurvey that seemed to be to resurvey the river, leaving each only ever to be done as the other can be made only on the east side.

It is suggested that you should have the block surveyed in the same way as the whole matter, when we could return and place the meander where it would be. The only resurvey that seemed to be to resurvey the river, leaving each only ever to be done as the other can be made only on the east side.

It is suggested that you should have the block surveyed in the same way as the whole matter, when we could return and place the meander where it would be. The only resurvey that seemed to be to resurvey the river, leaving each only ever to be done as the other can be made only on the east side.

It is suggested that you should have the block surveyed in the same way as the whole matter, when we could return and place the meander where it would be. The only resurvey that seemed to be to resurvey the river, leaving each only ever to be done as the other can be made only on the east side.

Counter 15734

3
2