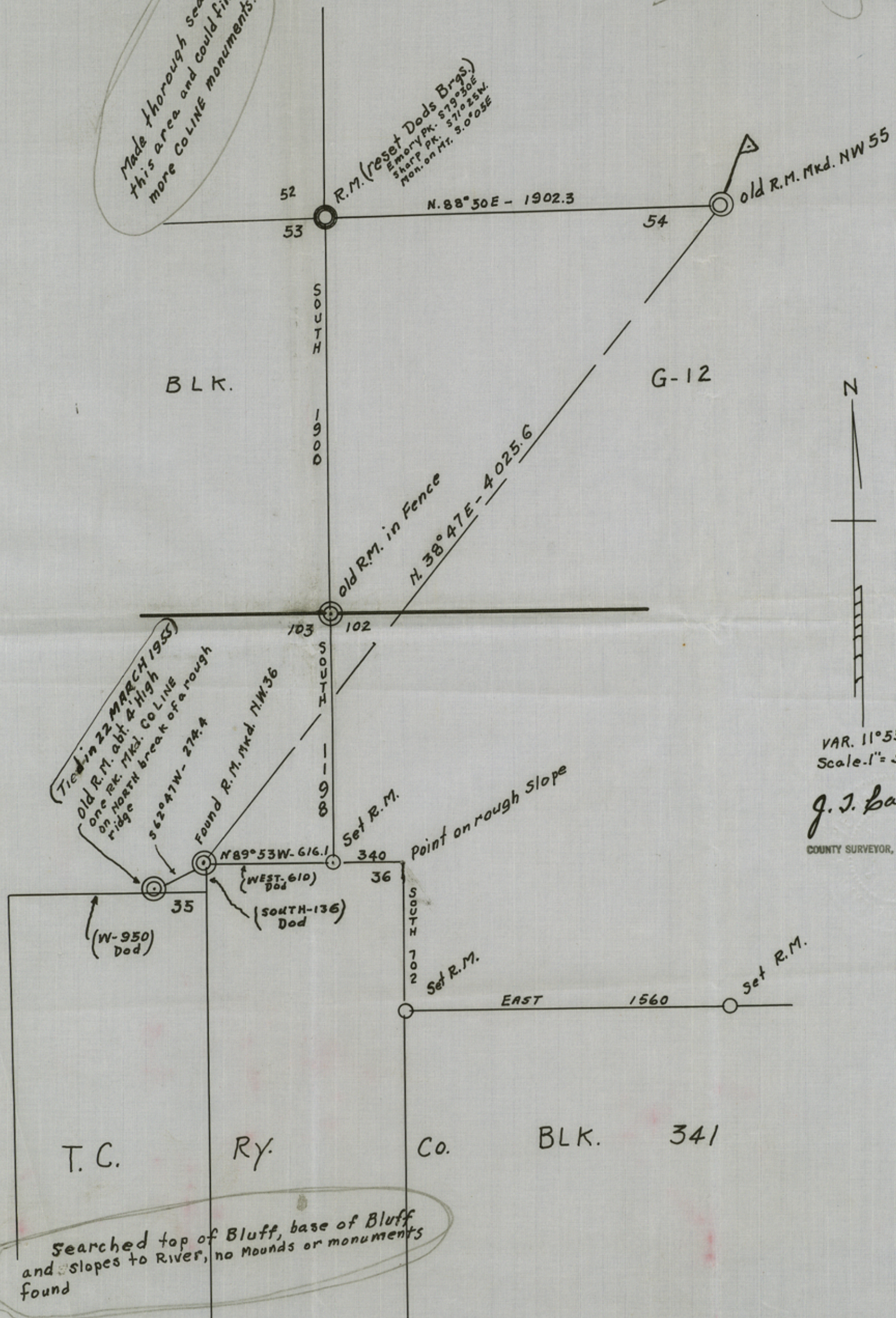


File No. _____
 Brewster County
 County line 2nd part
 Filed _____
 J. EARL HODGES, Comr.
 BY _____

Made thorough search of this area and could find no more CO LINE monuments.

R.M. (reset Dods Brqs.)
 Emory Pk. S79°30'E
 Staff Pk. S71°25'W
 Mon. on Mt. S.0°05'E



N
 VAR. $11^{\circ} 55' E$.
 Scale: 1" = 500 vrs.

J. J. Barney, Jr.
 COUNTY SURVEYOR, BREWSTER COUNTY

Searched top of Bluff, base of Bluff and slopes to River, no mounds or monuments found

D-2206

Counter 15820

File No. _____

Brewster County
County line S.W. part
6/20 19 55

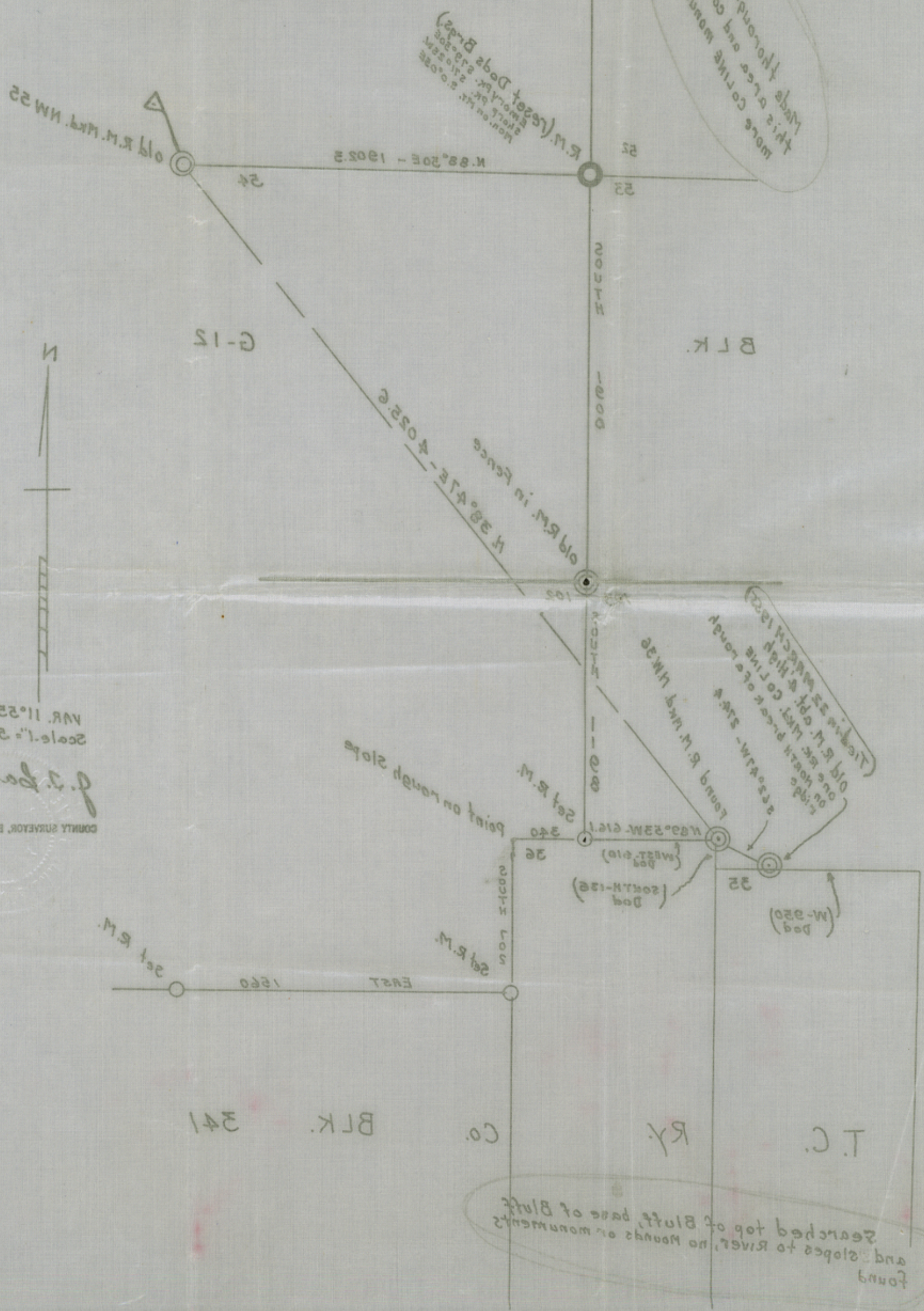
Filed _____

J. EARL RUDDER, Com'r.

By *A. H. Lebrun*

County 15821

Made thorough search of
this area and could find no
more Col. monuments.



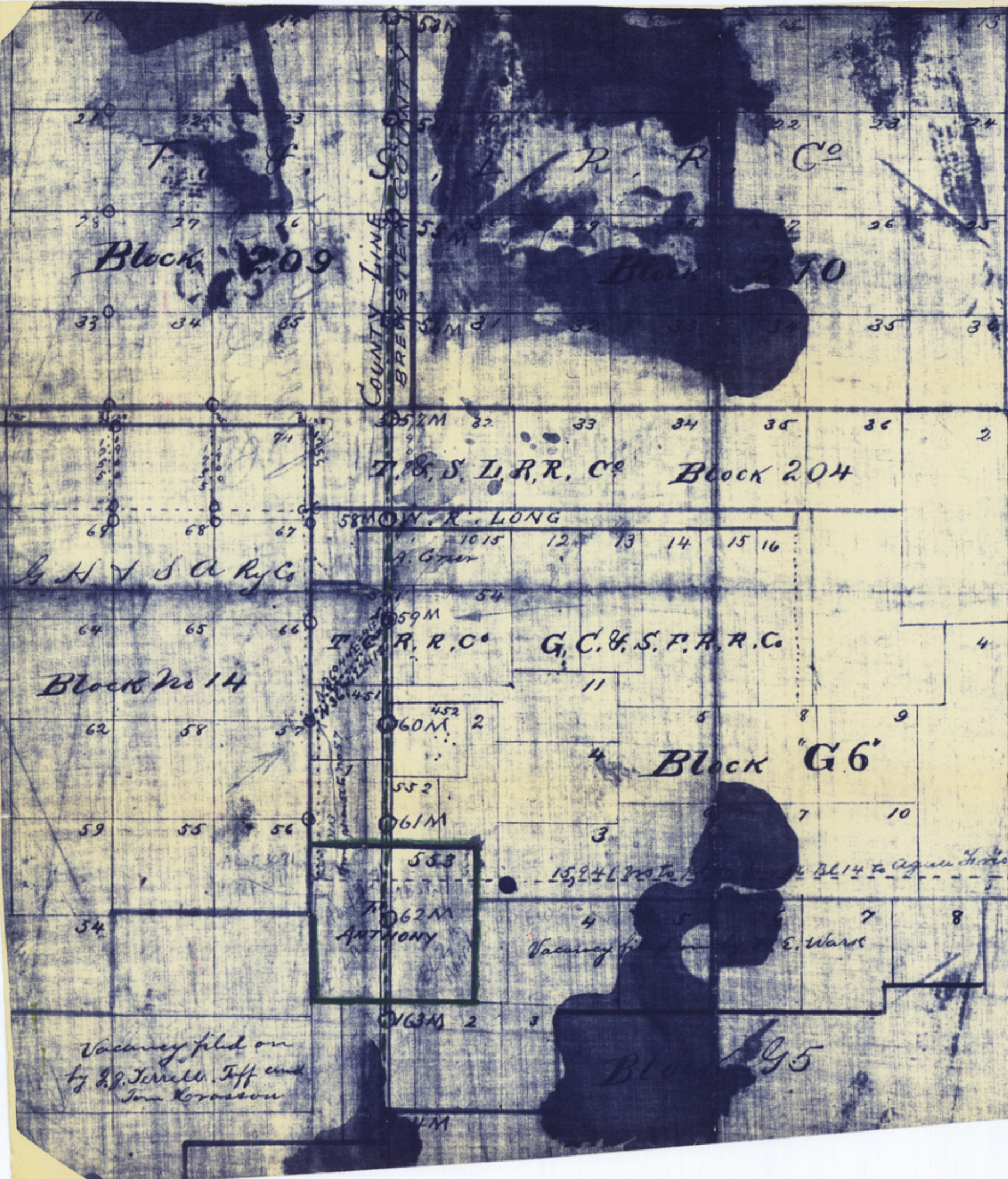
Searched top of bluff base of bluff
and slopes to river, no mounds or monuments
found

D-55-a

J. J. Darnley
COUNTY SURVEYOR, BREWSTER COUNTY
Scale 1" = 200 Vrs.
VAR. 11° 25' E.

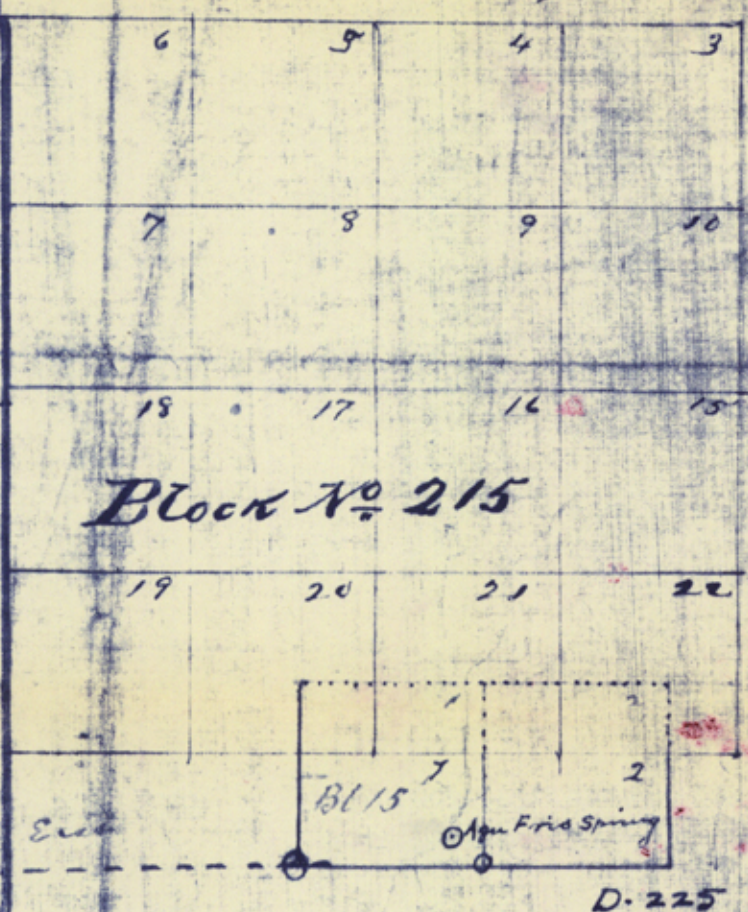


County 15821



Connection
Line of Precinct
Brewster Precinct
Dodd, Reavis and James
between Blocks 26 Nos 15
210 & 209 and the corner
S.E. Corner of Block 101 at
Agua Spring in Block 15
also the N.E. Corner of Survey
No 57 Block 14 S. H. S. L. R. R. Co.
to road line No 59 on County
line.

Green



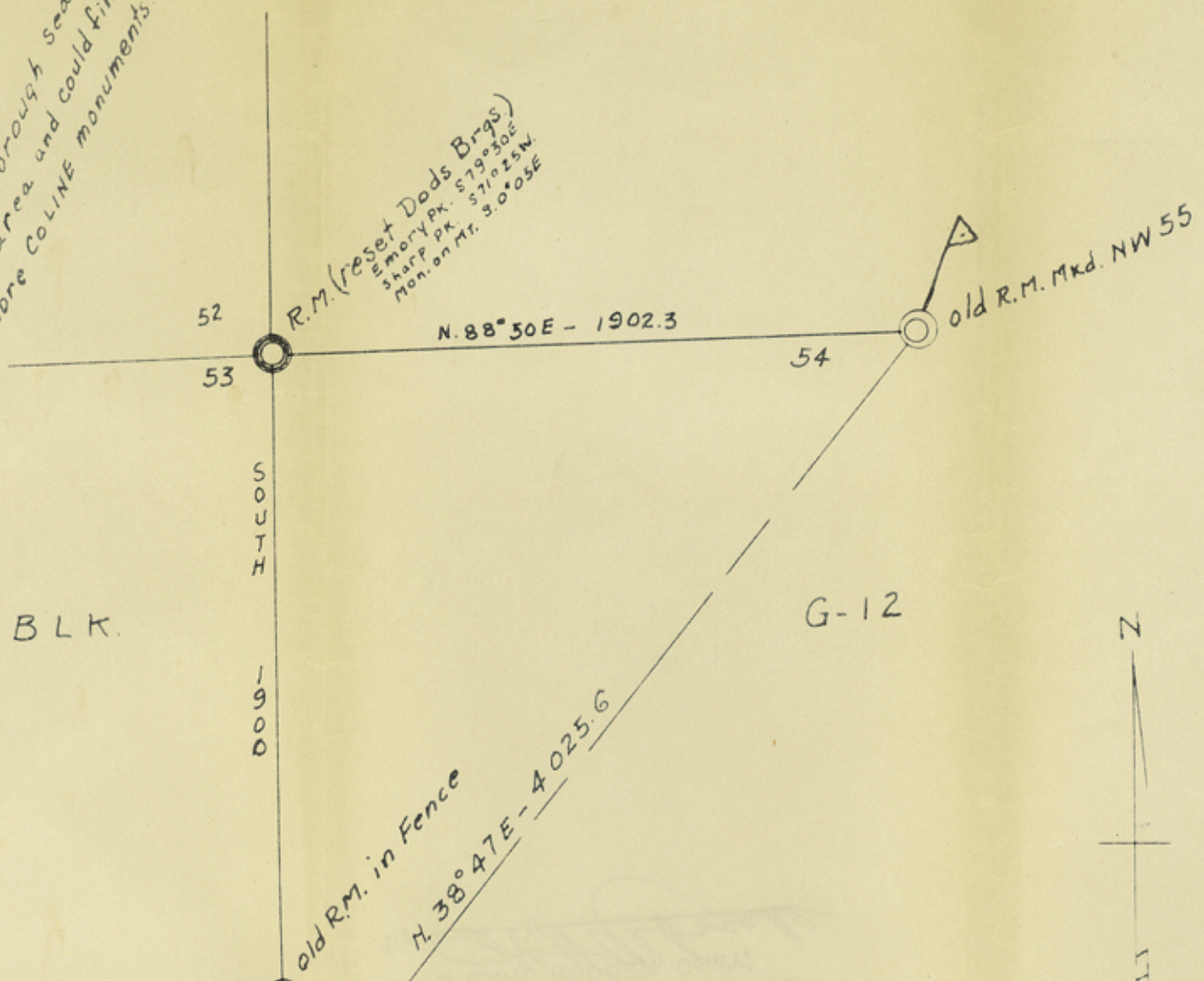
BRUCE A. BEEBEADON, BREWSTER COUNTY
COUNTY SURVEYOR, BREWSTER COUNTY
S. L. PINE, TEXAS
Counter 15822

Vacancy filed on
by J. J. Terrell, Jeff and
Tom Corrasou

Block G5

Made thorough search of this area and could find no more COLINE monuments

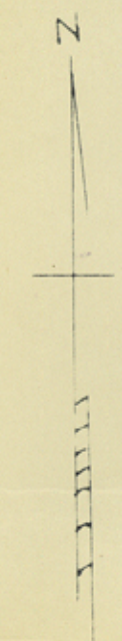
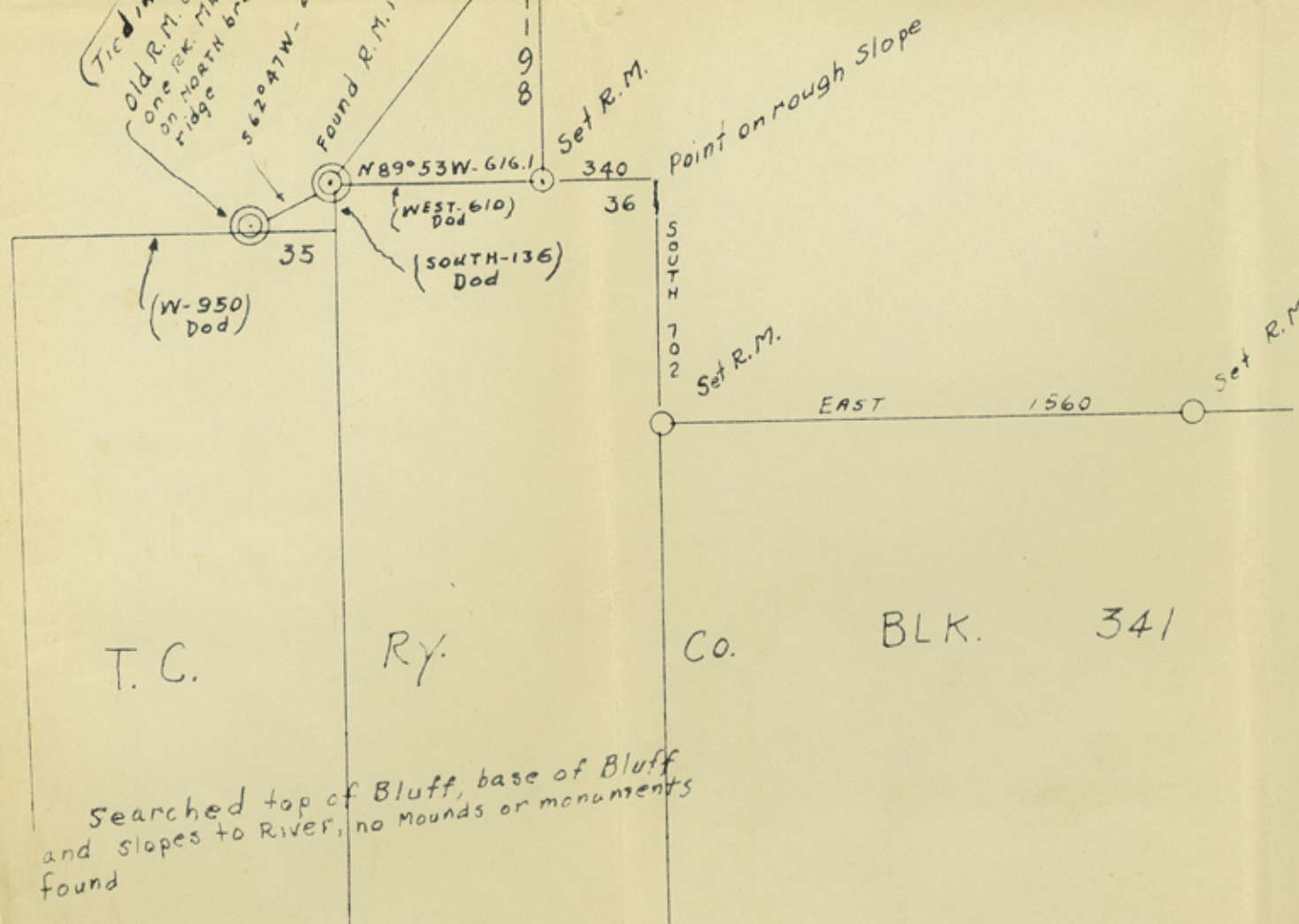
R.M. (reset Dods Brags)
 Emory Pk. 579°30E
 Sharp Pk. 571°25W
 Mon. on Mt. 3.0°05E



BLK.

G-12

(Tied in 22 MARCH 1955)
 Old R.M. abt. 4 High
 on North side of a rough
 ridge
 562°47W - 274.4
 Found R.M. Mkd. NW 36



VAR. 11°55E.
 Scale 1" = 500 Vrs.

J. J. Barne, Jr.

T.C.

Ry.

Co.

BLK. 341

Searched top of Bluff, base of Bluff and slopes to River, no mounds or monuments found

Counter 15824

File No. 27 South
Brewster County
County Line S.W. part
Filed 6/20 1955
J. EARL RUDDER, Com'r.
By [Signature]

Counter 15823