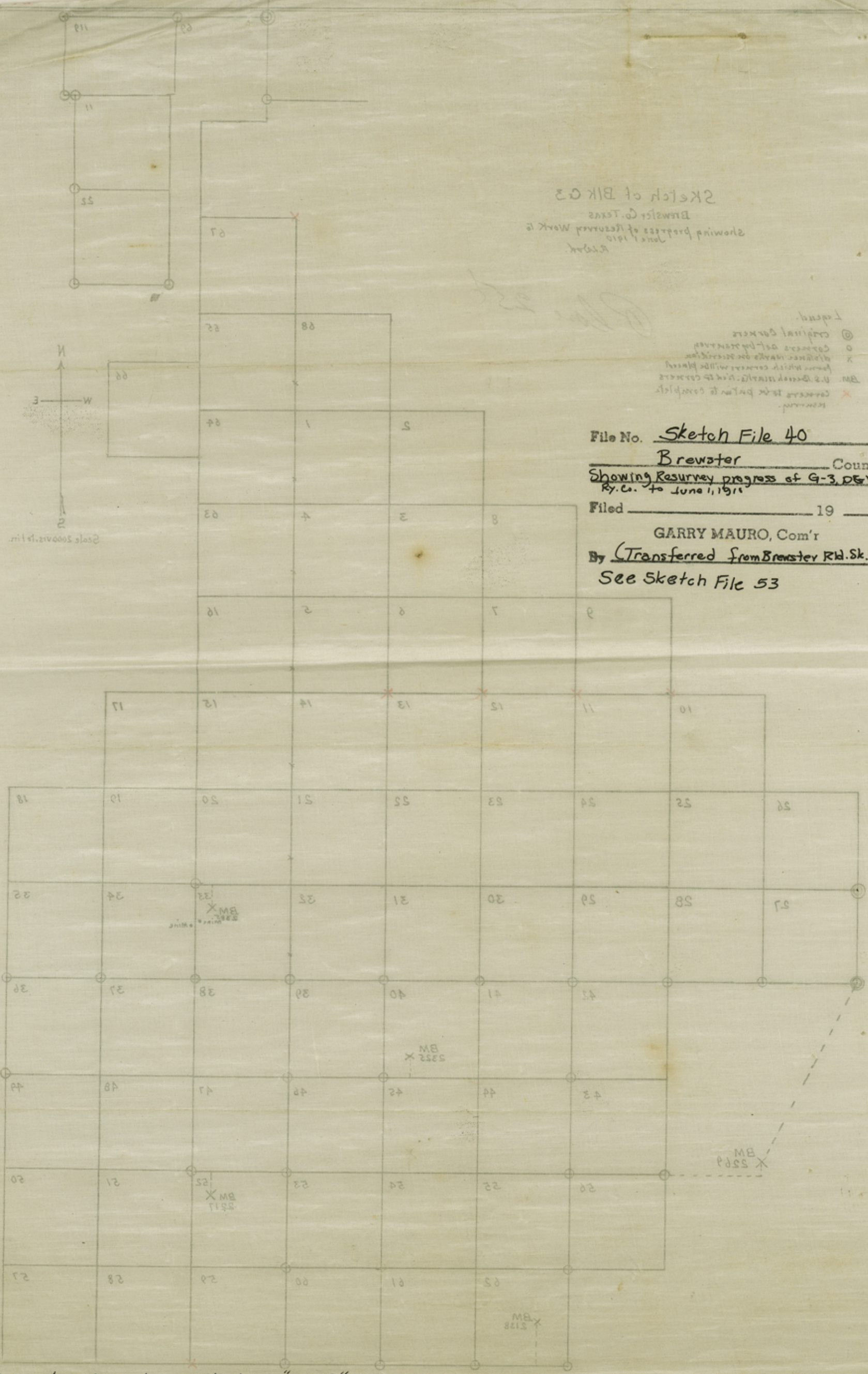
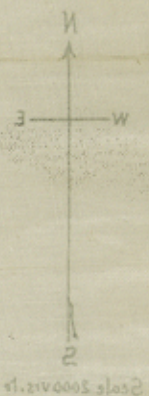


Counter 16302

Sketch of Bk G3
Brewster Co. Texas
Showing progress of Resurvey Work
June 1, 1910
R. S. Dod

Legend
⊙ Original corner
○ Corner of previous survey
x Corner which cannot be placed
BM U.S. Geol. Surv. 1/4 sec. corner
x Corner to be placed to complete resurvey

File No. Sketch File 40
Brewster County
Showing Resurvey progress of G-3, D&N
Ry. Co. to June 1, 1910
Filed _____ 19____
GARRY MAURO, Com'r
By (Transferred from Brewster Rd. Sk. 22-
See Sketch File 53 E



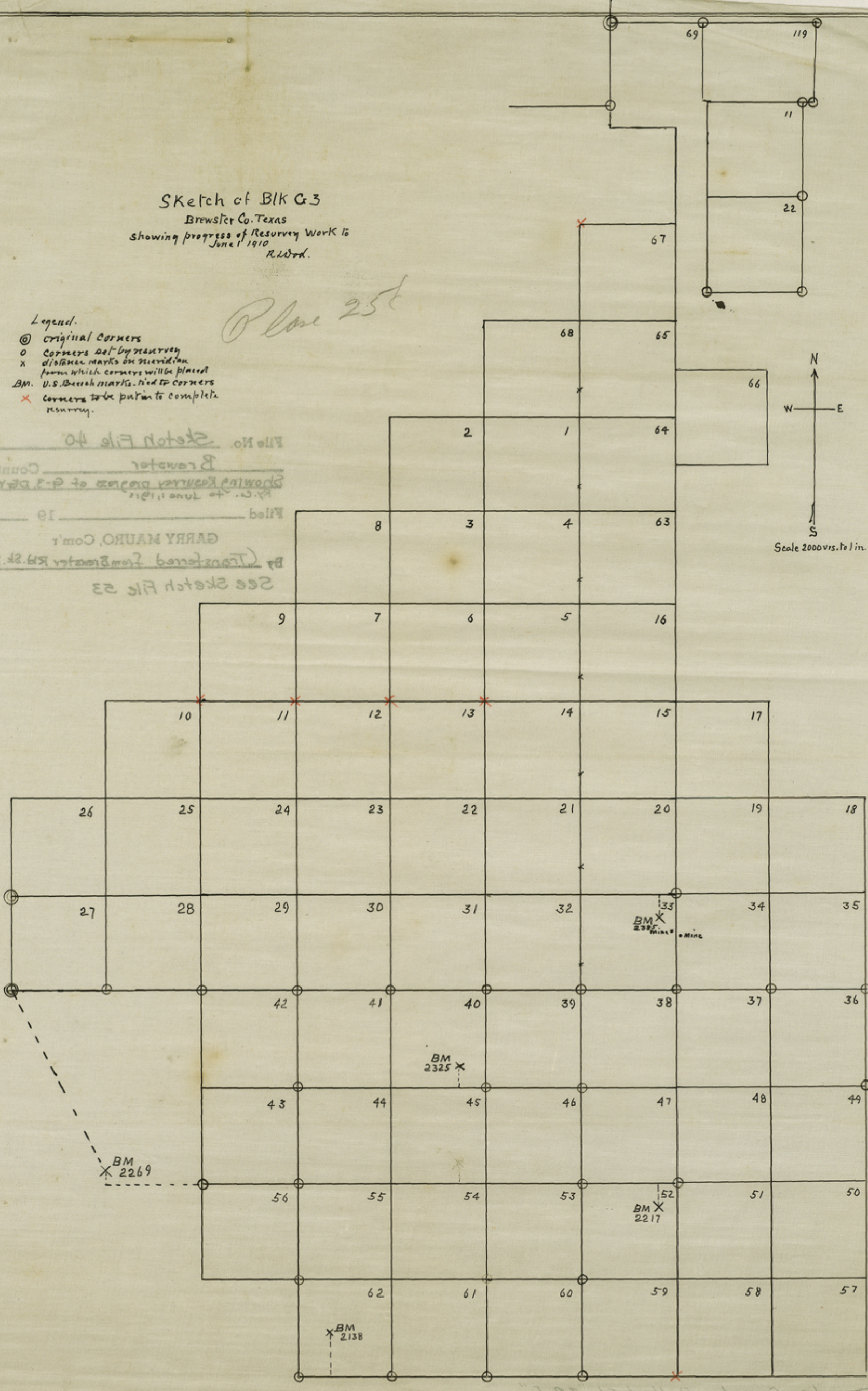
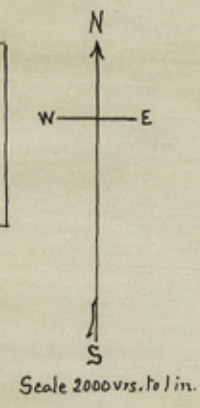
~~Brewster County Rolled Sk "22-E"~~
~~Bk G-3~~ By R. S. Dod
sur. June 1910

Sketch of BLK G-3
 Brewster Co. Texas
 showing progress of Resurvey Work to
 June 1 1910
 R. Wood.

Plane 25

- Legend.
- ⊙ Original Corners
 - Corners set by resurvey
 - x distance marks on meridian from which corners will be placed
 - BM. U.S. Bench marks tied to corners
 - x corners to be put in to complete resurvey.

File No. *Sketch File 40*
 Brewster County
 Showing Resurvey progress of G-3 BLK
 R.C. to June 1 1910
 Filed _____ 19____
 GARRY MAURO, Com'r
 By *Transferred from Brewster Co. 4-25-25*
 See Sketch File 23



Brewster County Rolled 4-25-25
Blk G-3