

File No. Sketch File 41

Brewster County

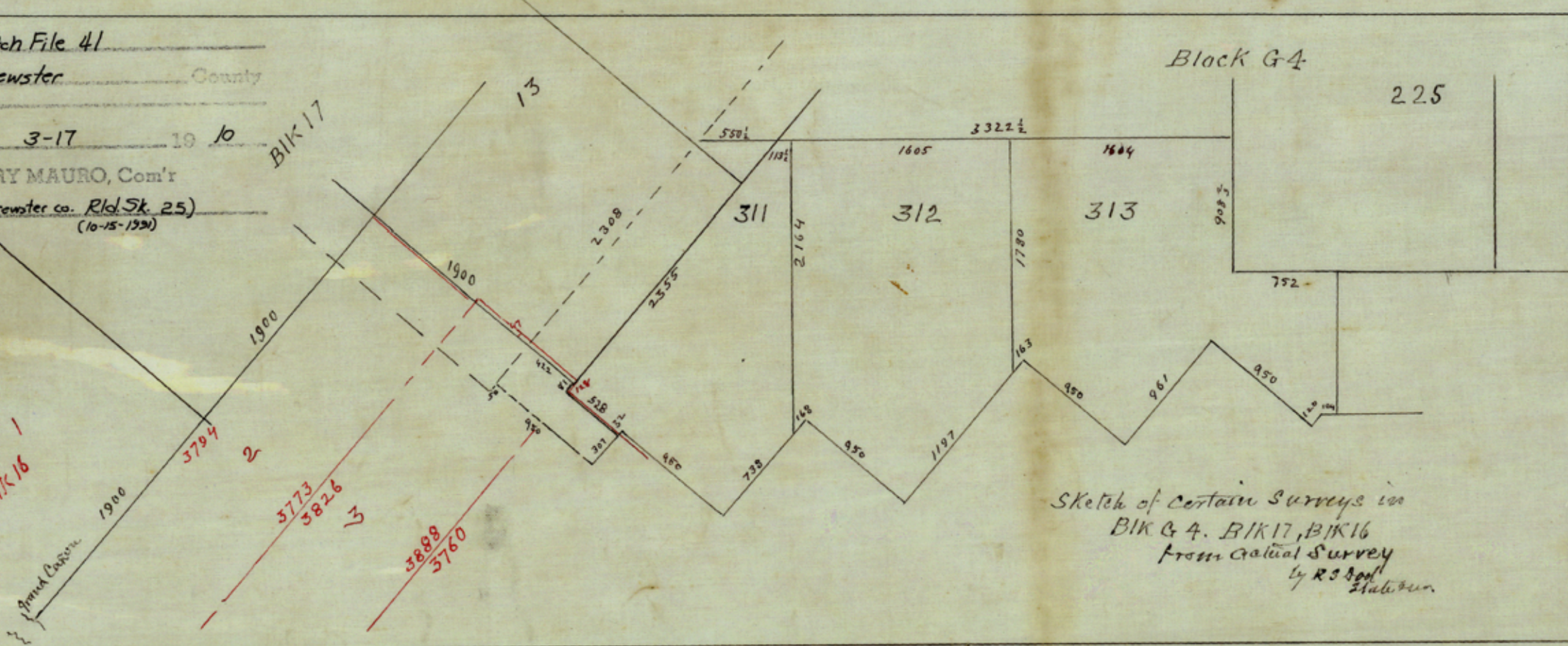
Filed 3-17 19 10

GARRY MAURO, Com'r

By (Transf. fr. Brewster co. Rld Sk. 25)
(10-15-1991)

BIK 16

BIK 17



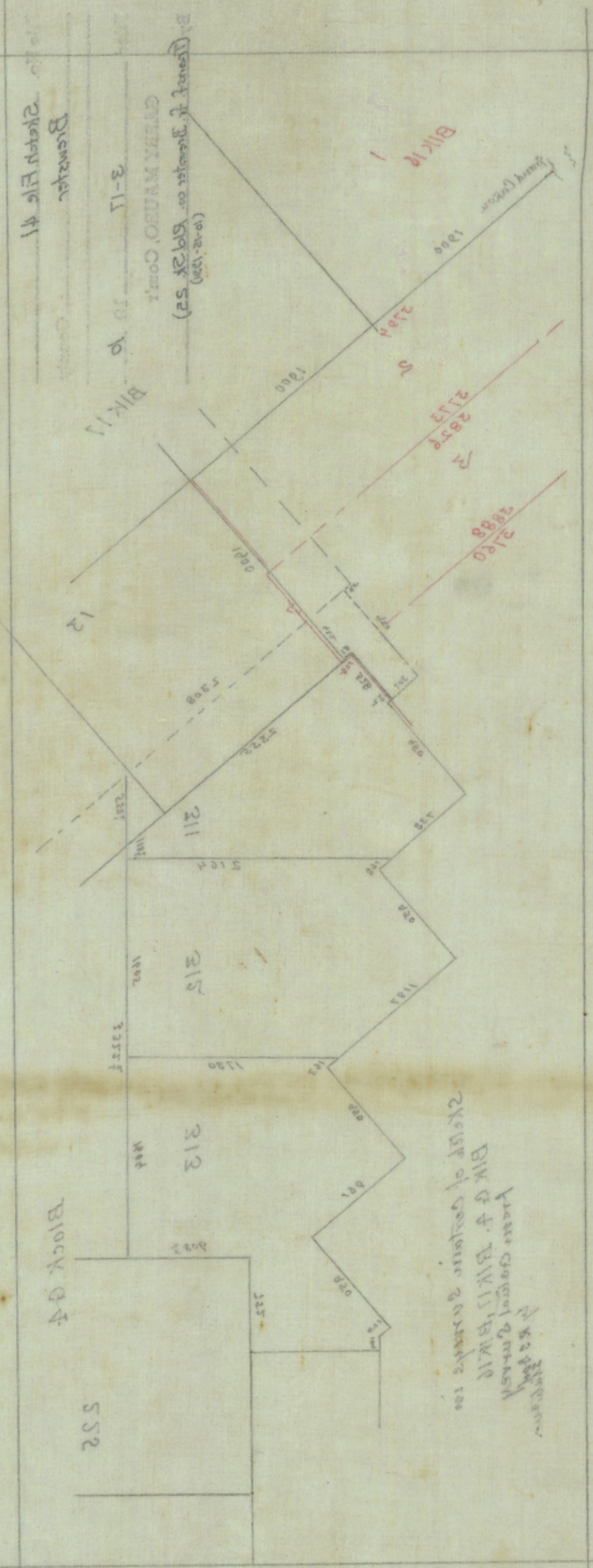
Sketch of certain surveys in
BIK G-4. BIK 17, BIK 16
from actual survey
by RS Book Station.

*RS. AC 6013
BIK 17, 16
BIK 17, 16
BIK 17, 16
BIK 17, 16
BIK 17, 16*

used with counter 16304

1063

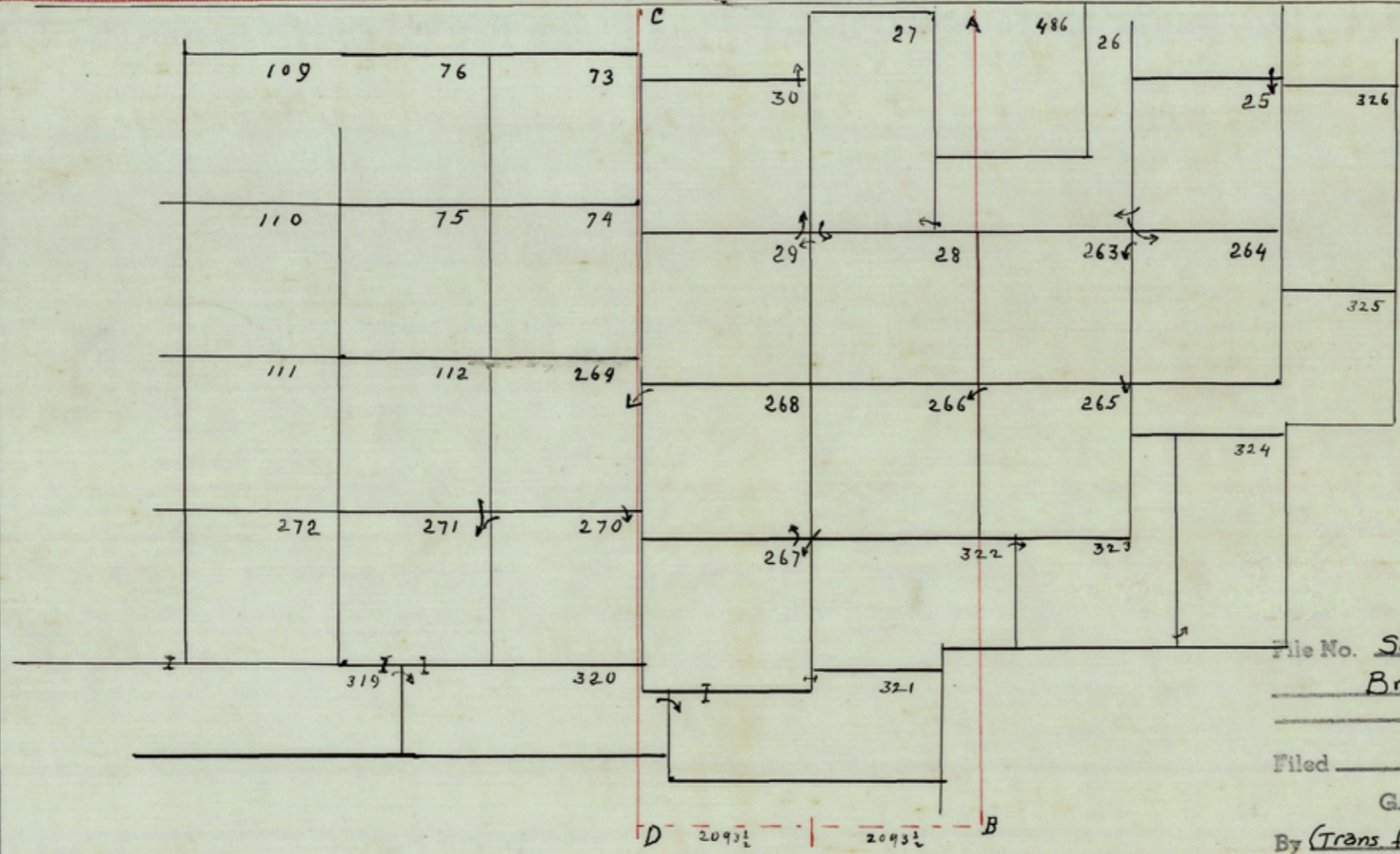
B. Brewster Co. (10-12-1920)
 (10-12-1920)
 619 St. 52
 GREEN VALLEY, Conn.
 3-17
 10 p
 BIK 11
 Brewster
 Sketch File #1



From Original & revised
 BIK G-4, BIK 11, BIK 12
 Sketch of certain records in
 2nd Edition

Rolled Sk. 25
 Sketch in
 Brewster Co.
 By R.S. Dod
 Blks. G-4, 17, & 16
 (3-17-10)

1000/1000 Counter 16325



Sketch of certain surveys
in
Block G4
Brewster Co Texas

Showing their connections from fieldnotes
and position on the ground from actual
survey from original corners
by R. H. Goddard
State Sur.

File No. Sketch File 41
Brewster County

Filed 3-17 19 10

GARRY MAURO, Com'r

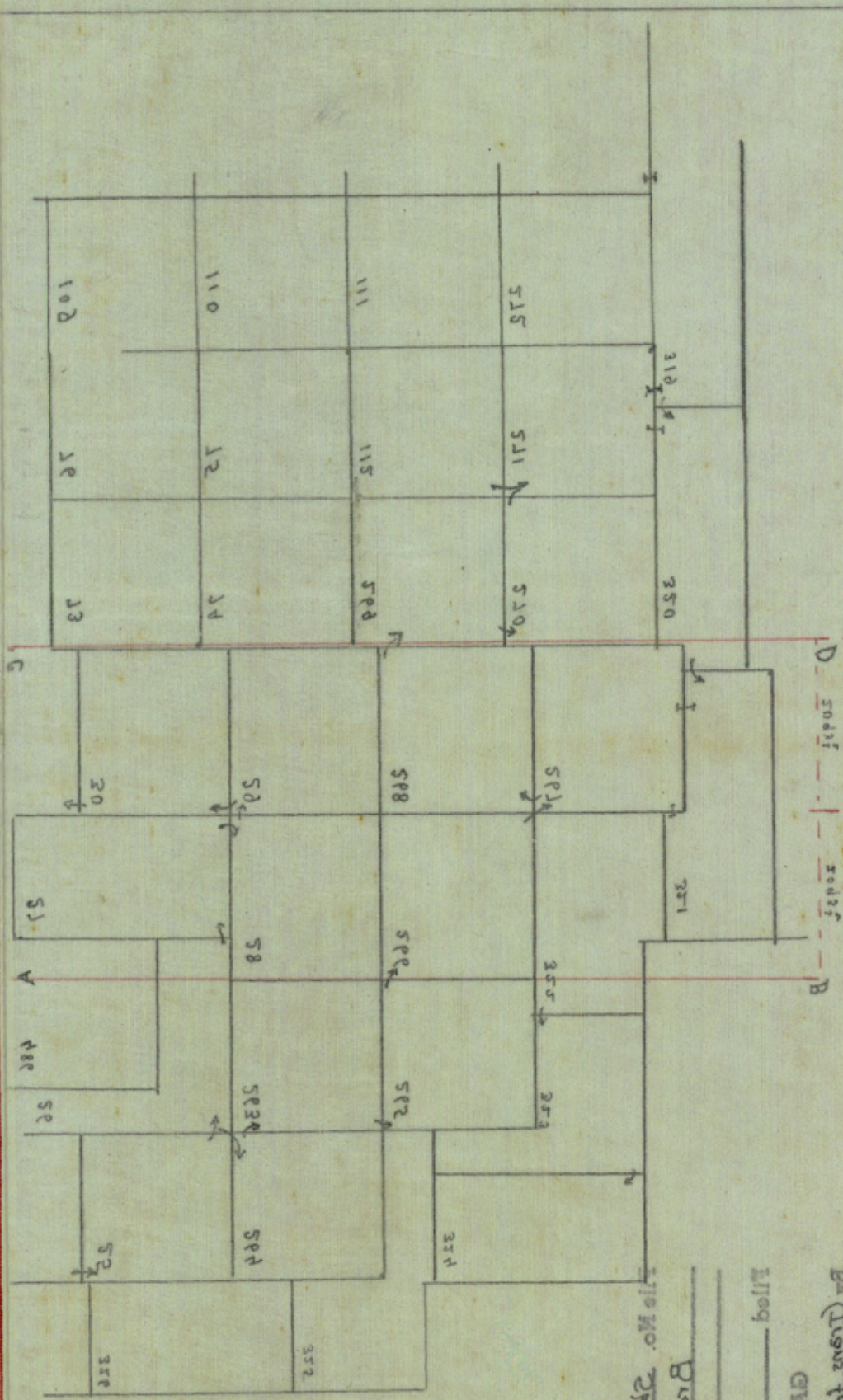
By (Trans. fr. Brewster Co. Rld. Sk. 25)
(10-15-1991)

(3-15-10)
 BIK G4
 Brewster Co.
 Sketch 52
 By R. S. Dod

Rolled Sketch 52

County 16306

5 of 3



By (Trans to Brewster Co. Blk. G4. S. E.)
 GARRY MAURO, Com'r

Filed 3-17 1910

Brewster County

Sketch File #1

Sketch of certain corners
 Block G4
 Brewster Co Texas
 which from original corners
 and positions on the ground from order
 showing their connections from field notes
 Brewster Co Texas

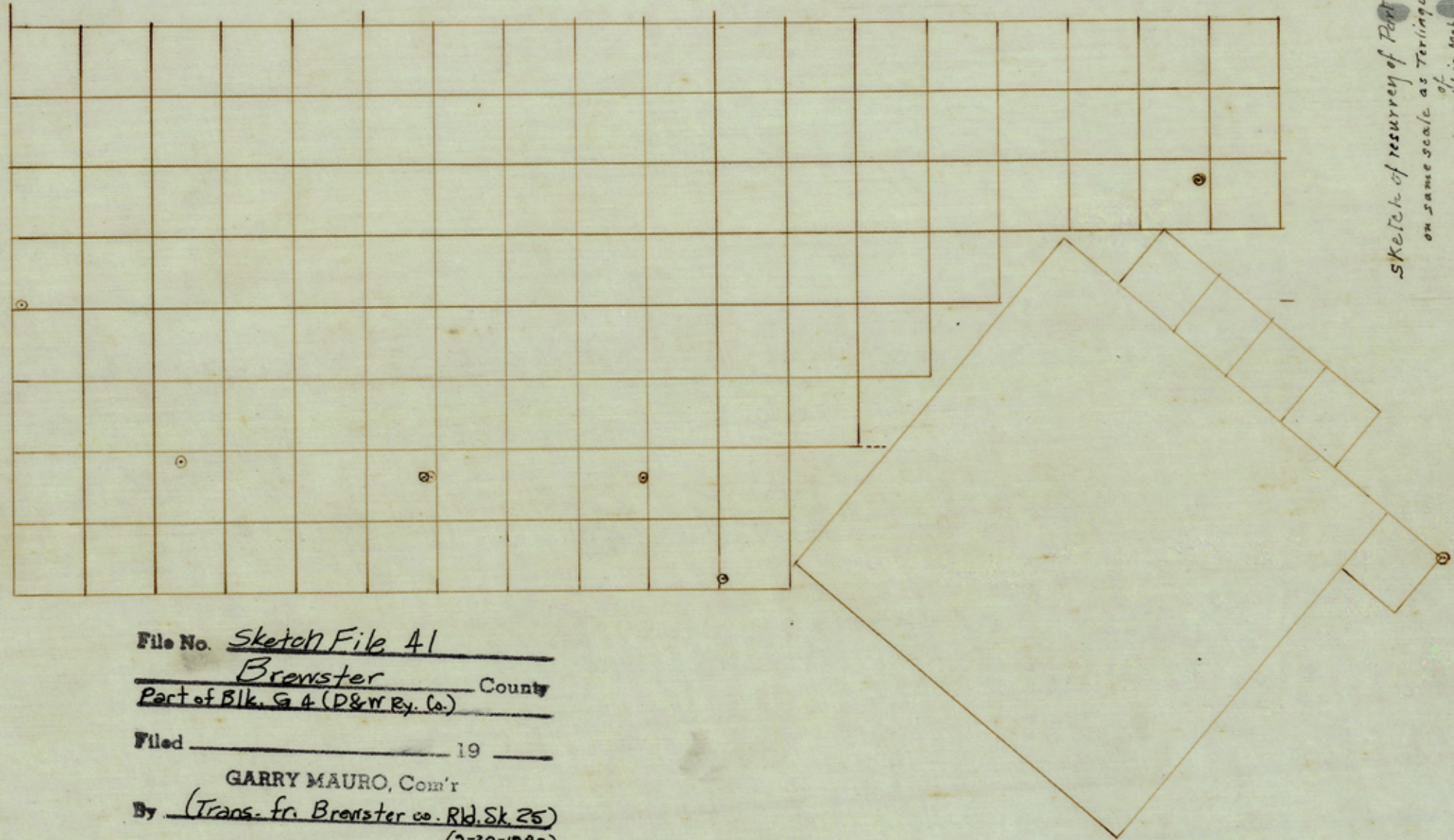
North Arrow

Sketch in
 Brewster Co.
 Blk. G4 By R.S. Dod.
 (3-17-10)

Rolled Sketch 25

2 of 3

Counter 16307



Sketch of resurvey of Part of Blk G 4.
 on same scale as Terlingua sheet
 of
 U.S. Topographic Map.
 made from field notes of actual survey
 by R. H. Aard. State surr.
 made in 1910
 U.S. B.M. located on the ground
 from adjacent survey corners.

File No. Sketch File 41
Brewster County
Part of Blk. G 4 (D&W Ry. Co.)
 Filed _____ 19 ____
 GARRY MAURO, Com'r
 By (Trans. fr. Brewster co. Rd. Sk 25)
 (9-20-1985)

323

~~Brewster County Roll 1924 500~~
~~D. M. Dod Co.~~
~~Blk. G 4~~
 Counter #6308



By James H. Brewster Co. B.P. 24 52
 (3-20-1888)
 GARRY MAURO, Comr.
 Filed _____ 18 ____
Sect. of Bk. G 4 (D&M Ex. 6) Cornua
Brewster
 Map No. Sketch File A 1

Sketch of survey of Bk. G 4.
 on same scale as Township sheet
 of U.S. Topographic Map
 made from field notes of
 J. H. Brewster
 1888
 U.S. G. 4. Collected in the ground
 from original survey courses.

Brewster County Rolled Sk. "28"

Sketch & Report

Brewster Co.

By R. S. Dod

Bk. G 4

(3-17-10)

County # 79999