

Report of Progress on Resurvey of
Block G.4. Brewster Co. Tex.
By R.S. Dod & H. Marsh.

Hon. J. T. Robison,
Commissioner Gen. Land Office
Austin, Texas

Dear Sir,

I beg leave to offer the following report on the work in the mineral District of Brewster County Texas.

~~XXXXXXXXXXXXXXXXXXXX~~ A study of the field notes of Blk G.4. showed only three corners as marked on the original survey by J.T. Gano. These three corners had been identified on the ground by a previous survey by me as State Surveyor, and a line run across block G 4 connecting these three points viz. N.E. Cor 285, known as the Cigar Spring corner, S.E. Cor. 65, known as the Chisos Pen corner, N.E. Cor. 1, known as the Gano Spring Corner. Besides these three points there is a call for bearing trees and a rock mound at the N.E. Cor 284. In order to locate this corner I had on a previous survey, run north from Cigar spring corner 1900 varas and reached an old rock mound a little west of the line I ran, but there were no cottonwood trees within the distance called for in the field notes for this corner. There is a local difference from the normal of 21' of arc in the needle readings at and about Cigar spring, as shown both by the solar meridian and several readings of the needle on the meridian taken from the north star while camped at cigar spring. This difference is to the east of the normal reading of the needle, and making allowance for this local difference the old rock mound above described is due north of the cigar spring corner.

On this survey, having been told that some parties claimed to have found the original bearing for this N.E. Cor. 284, I started at the Cigar spring corner and ran to a rock mound on a knoll in the creek valley, N. ~~66~~ ⁶⁸ W 960.8 varas, I then ran N24E 1207 varas, the point where the cottonwood bearing should stand, here I reached a point in the overflow land on east side creek, with evidence of considerable erosion and the stranded trunks of two cottonwood trees from higher up the creek from this point I noted a group of cotton woods standing N82 1/2 W 88 vrs. We examined these trees and found the bark on the up-stream side of the more northerly tree had been bruised in places by drift, and in healing had left scars, but there was no trace of what surveyors know as the "axe mark", which is the essential feature in recognizing an old mark. The tree was at an impossible distance for the bearing and I could find no sign of any old axe marks on any of the group. It is perhaps worth while to state that for some years I examined the old bearing trees in the Fisher and Miller Colony in McCulloch Co. and became very familiar with the appearance of surveyors marks which had been placed on bearing trees for 50 years or more. In view of past experience and the present careful examination, I had to abandon all hope of being able to identify this tree as an original Gano bearing.

I then ran on N. 43 1/2 E 560.5 reaching the old rock pile described above. The nearest cottonwood on the north is 1478 north and 76.5 west.

On running east from the Cigar Spring corner 3800 varas I reached an old rock mound, and about two varas N.W. a dagger with 4 sprouts from the one ~~XXXX~~ root, two still standing, two had died, the butts are still there. This rock mound, I am told, was described to parties interested, by a negro who had been with Mr. Gano when he made the original G.4 survey. The negro described the corner and the 4 stemmed dagger and then took the parties to the corner as described. This is exactly in place for the N.E. Cor. 247 and helps to identify Cigar spring corner.

On running east ten miles and south one mile I reach the original Gano Corner S.E. 65 as described in a previous report and later connected it with N.E. Cor 1.

This then gives the basis of the resurvey work in Blk G4. and are the only footsteps of the original surveyor which I have been able to find in this Blk.

So much for G4 surveys, as to its relations to surrounding blocks, I found that on the north it was bounded by G. 11 which began at 169 G.4 hence boundaries must coincide. On the west lay Blk G 12, which begins on G.H. & S.A. Ry Blk 15. Hence in order to find whether or not there was any conflict which might affect the G.4 surveys, I began at the Agua Frio Spring in Sur. 1 Blk 15, and ran a connecting line by way of Adobe walls and G. 11 to S.W. Cor 202 G.4 and on to Cigar Spring.

As a check on this measurement I ran from Cigar spring north and west and connected with the resurvey corner of Section 20 Blk 15. on the comparison of the two runs I find an error of 12.5 in easting & 25.2 in northing between the two runs. Considering the character of the country I considered this well within the limit of error, and proceeded to put up corners to G4 surveys.

Taking the actual run as made and shown on the map attached to this report I would offer the following explanation and comment.

We started at the Spring and ran to the N.E. Cor 1 Blk 15.

A

From this corner you can see the NW Cor.1 and we here had a mile reading for correcting our variation. The reading between these corners had been compared with the reading from Gano's corner Sur.1 G5 one mile west, and the reading from one of these corners to the other gave us the Gano variation and the Var. of Bk15. as $11^{\circ} 35' E$ of the magnetic meridian, or $1^{\circ} 7'$ west of true north.

As shown on plat, we ran one mile east, finding Cor. O.K. at this point Mr. Durrells corner for S.E. 20 Blk. 15 ~~xxxxxxx~~ was found 328.2 north and 135.3 east. We ran east from here hoping, if Mr. Durrells work was correct, to find some of the rock mounds called for by Mr. Thompson in Blks 215 & 217, at one mile and 1302 varas we reached the west bank of Terlingua creek, showing that the calls for the creek on the Tyler Tap and Dawson surveys was possibly correct.

We ran four miles east and then south & east one mile, intending to go on south and look for Thompsons block corner, but we could see that the mile would take us into impassable country so kept on S&E, at this point, about six miles east of Durrells SE20, near a large tank recently built, we made a distance mark to which I came back Sunday morning and we scoured the neighborhood for any signs of a rock mound but found nothing. Running on a mile south & east we came to a point near an old chimney at the point of a black hill where there had been some digging, probably for water. Here we found a rock mound and locating it from our line I went back to the tank and moved out same course and distance but found nothing.

I was very anxious to catch some trace of Thompsons work if possible, before I reached G.11. *Later we decided the rock mound at chimney was one of a row made to hold fence posts.*

We ran on, as shown in plat, till we reached and tied to the U.S.B.M. 3313 near Adobe Walls on the Alpine road 8075.5 varas south and 19531. east of N.E. Corner 2 Blk. 15. and the well at Dobe walls bears $S 73^{\circ} E$. This well is supposed to be on the J.H. Miller survey, but figuring from Durrells corner the north line of Sur. 5 passes just south of the well and, as shown below, when the line of G 11 is set from the old G 4 corners the north line of the Miller survey is several hundred varas south of the well. I was told that an old corner ~~xxx~~ or rock pile for NE5 was supposed to be in existence east of the road where the bench mark stands. A careful search discovered an indian mound near the point reached by calculation from Durrells corner, and another doubtful pile of rock, probably indian, $\times 630.3$ south and 178.5 east of B.M. from which point well bears $N 63^{\circ} E$. The true corner of J.H. Miller sur. 5 Blk G. 11 as located after making connection with Gano corner in G. 4 is 500 varas south and 143 varas east of Bench Mark 3313.

Our first line south which was to be a continuous line to connect with G4 corners is shown in map. It was impossible to even crawl down the precipice on a south line from bench mark so we had to diverge to the east, returning as close as possible to our line from time to time. This line was run with great care as the whole survey would depend on its correctness and hence we would sometimes prefer angles in azimuth to extreme angles in elevation or depression.

As shown we reached the S.W. Cor 202 G4 at 14654.5 varas east and 19953.7 south from the N.E. Cor 2 Blk. 15. This corner of 202 had been placed by me as state Sur. and reported to your Office in connection with the Survey made for the J.B. Watkins L. & M. Co. and the four miles north had been run twice, and the two miles east from the "Niggers Corner" had been run twice as shown in map by dotted red lines. Also these points had been carefully checked by the Topographic map and no error discovered.

From the camp at Cartridges we ran the two miles west and one north and two miles east from N.W. 199. From S.W. 202 I had previously run $N 45^{\circ} E$ to NE 202 and after placing the N.W. Cor. 203 and NW Cor. 203 from distance points on meander line we checked by a run $N 45^{\circ} W$ from N.E. 202.

The line west from N.W. 199 was checked by an object on the mountain between N.E. 284 and NW 231.

In order to check on the measurement from Agua Frio Spring just described, we went to the Cigar spring corner and ran as described in this report to the bearing in the valley and the spot where bearing tree should have been found and on to old rock mound at NW 255. The mile due north from NE 285 already having been run as stated above.

We thence ran north a mile, thence north 523 varas where we tied on to B. M. 2671, on 1900 in all to NE 282 where we set a rock mound on south slope of a high mountain.

Here we turned west past the Gourley ranch (vid. Top. Map), thence north west to the NW cor 281, ~~thence north 1900 xxxxxxxx NW 282~~ thence north east to the "rock coral" (vid Top. Map) thence north west to the NW cor 280, thence $N 45^{\circ} W$ 2688 to the NW cor 292. Thence north 1900 to NW cor 293, here the limestone bluffs turned us and we had to run around them. Along this line we found occasional stakes set with a few rocks around them, similar to the marks made on a transit line run from Agua Frio by one of the surveyors in the Turney and Dewees suit over boundary of mine section in G. 12. We ran as shown on sketch, north east and north west to a point 1900 varas north of S.W. 294 but the corner would be down in a hollow so we put a large rock mound North 100 varas and East 30 varas on an isolated gravel knoll and marked the cap rock NW cor. 294 G4 ~~100~~ S 30 W.

From this witness mound we ran as shown on sketch, over some very deep and precipitous canons to connect with the SE cor sur 20 Blk 15 GH&SARY. At 1381 vrs west and 68 vrs north of the point where we locate NW Cor 294 Mr. Marsh found an old rock mound close to the line we were on. This was evidently intended for a monument of some kind and was old enough to have sunk into the ground, and for the rocks to have weathered in place. It was not an indian mound, which are circular but flat, it was piled up as surveyors ordinarily make a rock mound for a corner, ^{SW} its position corresponds closely with the position called for for SE 62 G12. 0

When we reached the SE cor 20 Blk 15 (Spillers resurvey corner) identified by marked rock, age of mound and marking, and bearing on two peaks, we found we were 3266.7 west and 978.2 north of NW 294 G4. The distance west called for by field notes of G12 is 3330, showing a shortage between east line Block 15 and west line block G4 of 63.3 varas. According to the field notes SE 20 Blk. 15 should be 672 varas north of NW 294 G. 4 showing an excess ^{by} our measurement of 315 varas. 3060

The old rock mound mentioned above, if it be Gano's SE62 G 12, should be 47 vrs north of NW 294, we found it 68 north, according to our measurement of the shortage east and west this rock mound should be 1366.7 west of NW 294 G4, we found it 1381 west a difference of 14.3 varas, which is I think a confirmation of the correctness of our measurement, *taking the character of the country into account.*

The total run from Cigar Spring corner adding the four miles twice measured from the east, amounts to 14666.7 to west line of Block 15 as marked by SE cor 20, and as measured by the line run from ~~NE~~ NE cor 2 Blk 15 to SW 202 G4 is 14654.5 an error of 12.2 varas in seven and three quarter miles nearly.

The distance south from NE 2 Blk 15 to SW 202 G4 is 19953.7 the same distance on the cigar spring line adding the five miles from SE Cor 20 block 15 to NE 2 same block is 19978.2 a difference or error of 25.5 in ten and a half miles nearly. These relative distances and the position of the various corners and water courses as given by our survey are confirmed by scaling the same on the U.S Top. Map. I have taken a number of readings on the triangulation monuments in sight from our line but have not had time to work up the triangles as yet.

On the map attached to this report are shown the location of two more B.M. and I have dotted certain corners marked A.B.C.D.E. which I will put in on my way back to work. These will I think be all that is necessary, and perhaps all that are possible in this north west portion of Blk G 4, *subject to your instructions.*

We returned to the B.M. at Adobe Walls and put in the Corners on the Block line as shown on Map.

In order to account for the erratic course of some of the lines run I would like to call attention to a couple of incidents illustrating the peculiar conditions of surface in this block. The first 1500 varas south from the B.M. at Dobe Walls was run in a little less than half an hour, the last 700 varas took two hours and a half. The line ran up a very steep slope and reached within 150 feet of the top of the ridge, at the foot of a perpendicular cliff. The whole side of the slope was covered with broken masses of rock, some as large as a house other as small as a football, but there would be frequent gaps between boulders which would require help in climbing, being too broad to jump and the rocks too high to reach the top from the base. Ordinarily I would have turned one side and avoided these rock masses and saved time, but the B.M. is so convenient a point of reference for anyone looking for the lines and corners of G4, that a monument on the Block line at this point seemed important enough to warrant the time spent. Also I had a bunch of green hands and it was necessary to impress them with the fact that the lines were to be run regardless of difficulties and if they could not or would not go where they were told the sooner I found it out the better for the work.

Again, in running west from NW Cor G4 as above described we crossed a canon in lower cretaceous lime which had the peculiar perpendicular sides characteristic of this formation locally, and bordered by high hills. To get the distance S62° 1/2 W 595, we had to travel over half a mile, ^{from our line} the slope was so steep that even by picking our way over the best route possible, we reached points where ponies would refuse to follow. The way lead along the edge of the bluff and the slope was so steep and the sliding rock so insecure that progress was very difficult in any direction. We went over the bluff, passing the instrument from hand to hand and passed along the bottom of the canon for some 300 or 400 yards and climbed out in the same way. It would be absolutely impossible to measure this line with a chain and there is not level space anywhere to run a base for a triangle, so the only possible method is stadia, or a system of triangles requiring a class of instruments and an amount of time too costly for the values at stake, fortunately we have these triangles already made for us by the topographic survey and we use them wherever possible. The beauty of the stadia work is that the roughness of the surface has no effect on the readings, as long as the instrument is steady and the rod leveled, the readings over the roughest path or the smoothest plain are the same.

I have omitted bearings at corners and triangles made or measured in this report as I understand you wish the reports sent in as frequently as possible

A- + 28 17 42 20 20 20 20

Counter 16363

with such data as will show the progress of the work, and enable you to give such further instructions as you may think necessary under the conditions.

I am taking back the new hack which will enable us to make one night camps and save time. *Water is very scarce + possible camping spots far apart. + no grass.*

As soon as Mr. Marsh feels a little more at home in the conditions here we can keep both instruments at work most of the time.

Our mail is very uncertain, and it means one man gone all day to reach the office, so I have not sent in my report as often as instructed. I will try to get a partial report to you every ten days where it does not mean too long a delay.

Respectfully submitted

R. S. Dod

State Sur.

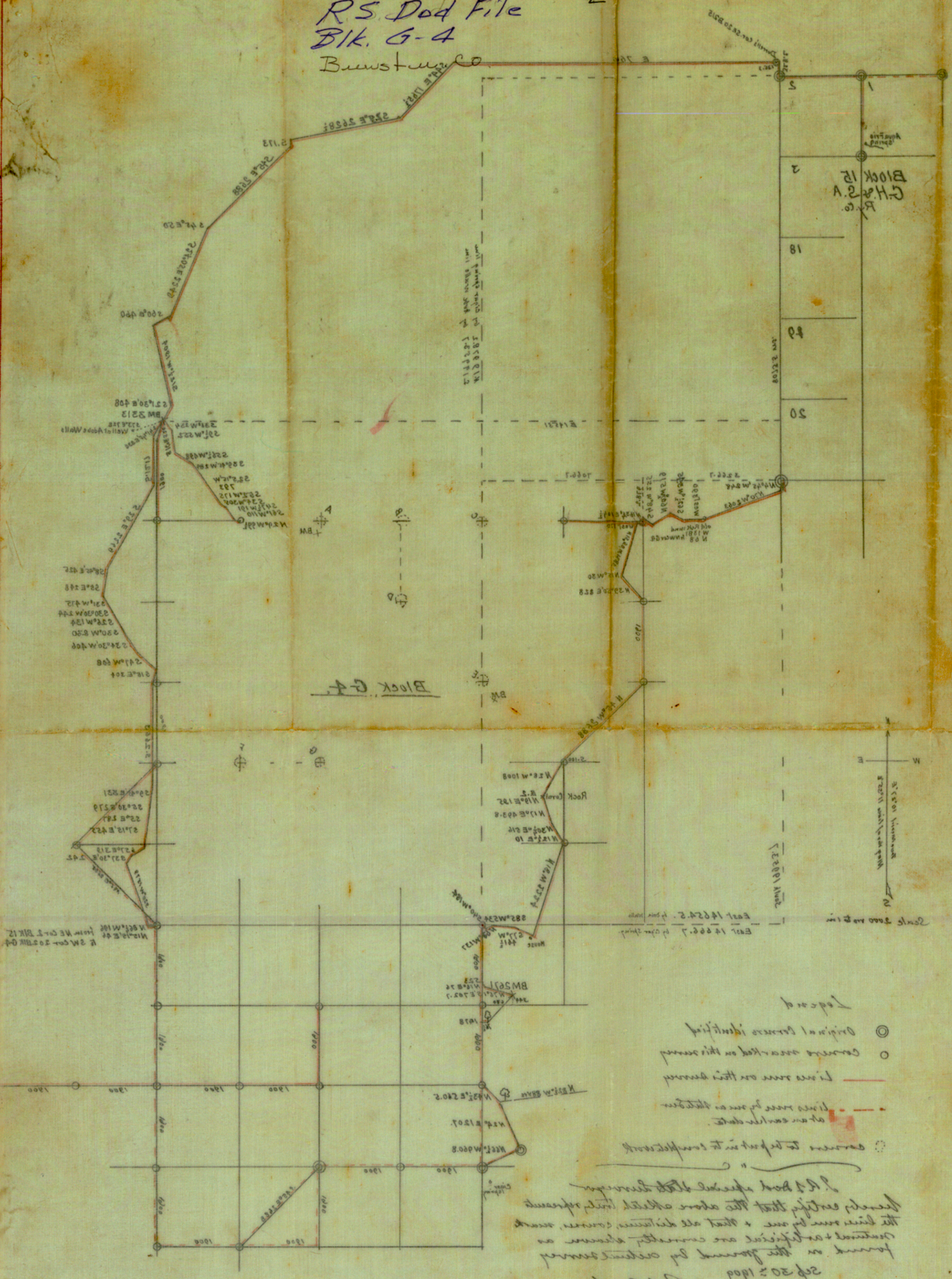
alpine Sep. 30th 1909

I append calls for meander lines shown on map in case there may be some blurred figures or mistakes in the figures given on that sheet.

RS. Dod File
Blk. G-4
Brewster Co

2

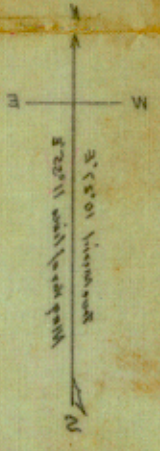
Counter 16365



Block 15
G.H. & S.V.
Ry. Co.

Block G-4

A-3



- Legend
- Original corners identified
 - Corners marked on this survey
 - Lines run on this survey
 - - - Lines were run on this survey at an earlier date
 - Corners to be put in to complete work

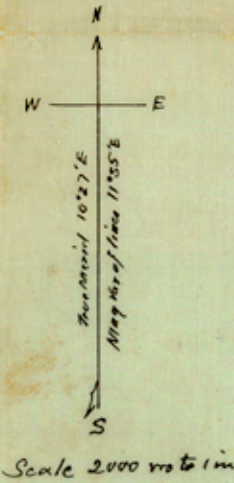
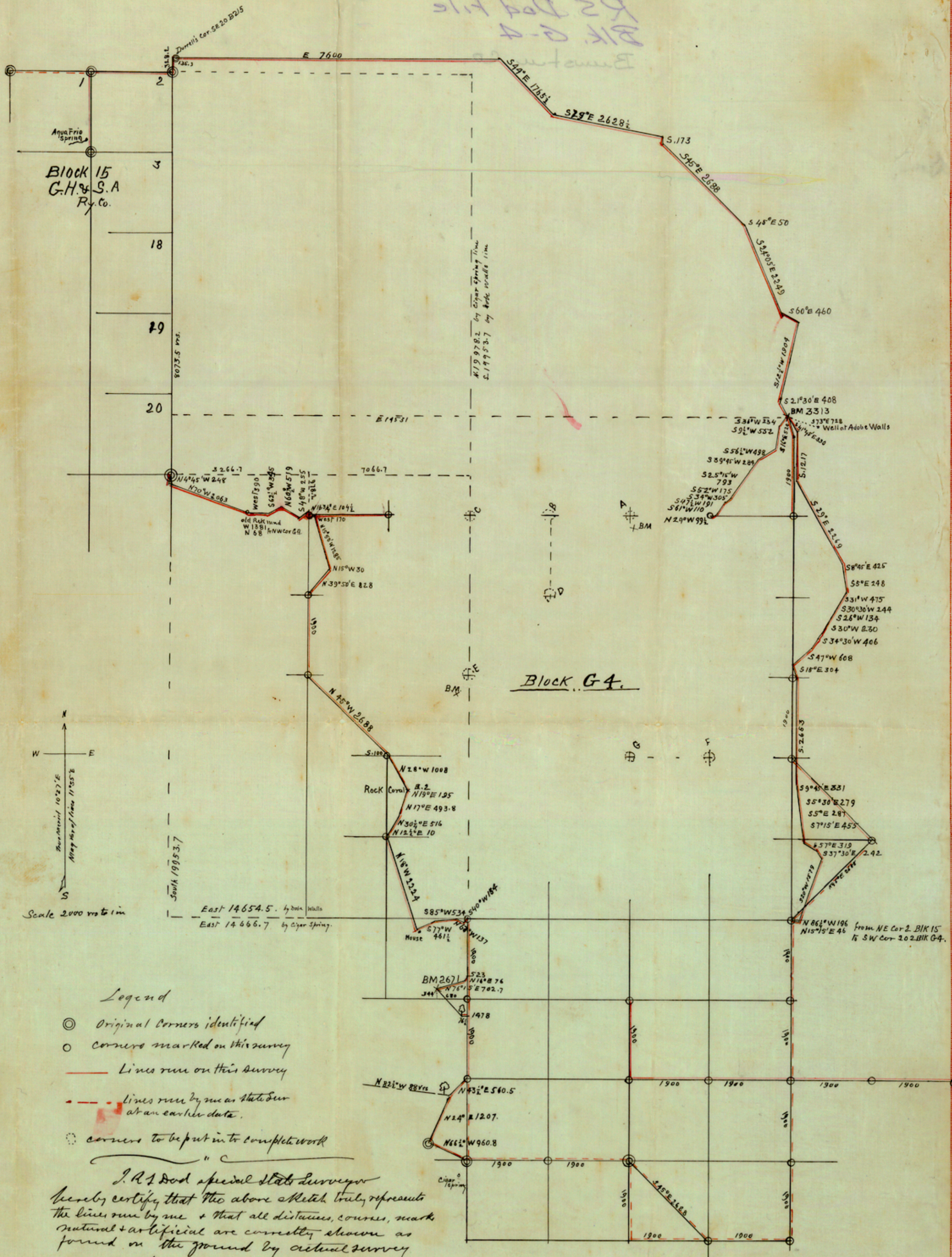
I do hereby certify that the above described land is the same as shown on the ground by certain survey and that all distances, courses, areas, contents & official are correctly shown on the ground by certain survey

20th 20th 1900
R.S. Dod
Supt. State Sur.

Counter 16365

10321 return

R2 Dod File
Blk. G-4
Bureau



- Legend**
- ⊙ Original Corners identified
 - corners marked on this survey
 - Lines run on this survey
 - - - Lines run by me as state sur at an earlier date.
 - corners to be put in to complete work

I, R. J. Dod special state surveyor
 hereby certify that the above sketch truly represents
 the lines run by me + that all distances, courses, marks
 natural + artificial are correctly shown as
 found on the ground by actual survey
 Sep 30 1909

R. J. Dod
 spe. state sur.

Counter 14366

From N.E. Corner Survey No. 2, Block 15 GH&SARY. Co.

Brewster County, Texas

North	328.2
East	135.3
East	7600.0
S 44 E	1765.5
S 79 E	2628.5
South	173.0
S 45 E	2688.0
S 45 E	50.0
S 24 05' E	2249.0
S 60 E	460.0
S 12 30' W	1904.0
S 21 30' E	408.0
S 41 45' E	330.0
South	1217.0
S 29 E	2269.0
S 8 45' E	425.0
S 5 E	248.0
S 31 W	475.0
S 30 30' W	244.0
S 26 W	134.0
S 30 W	230.0
S 34 30' W	496.0
S 47 W	608.0
S 15 E	304.0
South	2653.0
S 9 45' E	331.0
S 5 30' E	279.0
S 5 E	287.0
S 7 15' E	455.0
S 57 E	319.0
S 37 30' E	242.0
S 20 W	1579.0
N 86 15' W	196.0
N 15 15' E	46.0

to S.W. Cor. Sur. No. 202 G. 4.

From N.E. Cor. 285, G. 4. Cigar Sp.

N 66 30' W	960.8
N 24 E	1207.0
N 43 30' E	560.5
North	1900.0
North	1900.0
S 40. W	154.0
N 67 W	137.0
S 85 W	534.0
S 77 W 461.2	461.2
N 18 W	2224.0 NE 290.
West	7.0
N 12 30' E	10.0
N 30 15' E	516.9
N 17 E	493.8
N 19 E	195.0
East	2.0
N 28 W	1008.0
South	100.0 SE 292
N 45 W	2688.0 NW 292
North	1900.0 SW 294
N 39 50' E	828.0
N 15 W	30.0
N 15 50' W	1285.0
West	170.0 NW 294.

From N.W. Cor. Sur. No. 294 Blk G 4.	
N 16 45' E	104.5
S 48 W	255.0
N 60 30' W	519.0
S 62 30' W	345.0
West	390.0
N 70. W	2063.0
N 4 45' W	248.0

to S.E. Cor Sur. 20 Blk. 15 GH&SARY Co

Handwritten notes:
Blk. 15
G. 4
Cigar Sp.

RECEIVED

NOV 22 1909

Referred to Map

1576

Lincayo Camp
Nov 16th 1909

Hon J. T. Robison,
Comdr Gen Land Office
Austin Tex

Dear Sir,

I am writing a short note to let you know that the work of the Resurvey of G. 4. is progressing fairly well.

We are running lines south from the base line through the middle of the block east & west.

We left Big Bend on Sunday last & are now camped at the Lincayo on section 12. we have put in the corners 4 miles south today & yesterday put in 3 miles east & north. We will run another meridian south from corner two miles east - and 4 miles north from same corner.

We will connect with original corner on survey 1. G. 4. I will send in these connections & measurements at the end of the week & will ask instructions as to

placing corners in view of error in original work.

While waiting for instructions we propose to move to Peña Spring on Sun. 189 and fill in the south end of the block.

It is still dry - and water is very scarce - Our Cook was taken sick & we had to drop him - but the rest of us are doing better since we moved camp.

Many thanks for the very prompt return of vouchers.

Respectfully

R A Dod
State Sur.

ALPINE, TEXAS, Dec. 3 1909

Hon. J. T. Robison
Commissioner Gen. Land Office
Austin, Texas

Dear Sir,

In accordance with your instructions I forward map showing progress of resurvey of G 4, with the following explanation of details.

I have tried to put it in shape to show the two points emphasized in your letter, "properly planned, & accurately executed".

The circles on the corners of sections on the map show the corners put in since the last report. These are based on course and distance from the original corner at Cigar Springs, and brings the work to within two miles of the east line of the Block. The accuracy of the work can be tested by measurement on the U.S. Topographic Map of the Chisos and Terlingua quadrangles. We have measured out to the bench marks from the corners noted and this gives to the distance between bench marks as measured by our survey, the measured distance on the Top. Map, should agree with this, showing our distances the same as those of the U.S. work. We have also checked on the Christmas triangulation Mt. These measurements show that the distance from Cigar Spring corner north to the north line of the Block is correct within the limit of the Top. Map Scale, and that the Corner of Section 65 is the proper distance east of Cigar Springs by the same scale. We have also inserted some angular measurements which work out the same result within the limit of instrumental error.

So much for the work done, there remains three questions as to the location of the remaining lines and corners which I would respectfully submit for your decision. 1st the location of S.E. Cor. 65 from evidence on the ground,

2nd the distribution of the excess between the S.E. Cor. 65 and N.E. Cor. of Section 1.

3rd the location of surveys 1.2.3.4.5.6.7.8. and their conflict with Blk 10 H. & TCRR.

1st. On running carefully, with the above noted checks on the run, twelve miles east and one mile south of the Cigar Spring Corner, we reach a point 3 varas ~~xxxxxxx~~ east and 11 varas north of an old rock mound on a gravel point. At this point, the S.E. Cor. 65 the field notes call for a rock mound from which a rock monument on the north side of a hill bears N52 1/2 W 764 varas. North west of the point we reach by course and distance is a lime hill and on the north end of this hill is an Indian circle of rocks in the middle of which once stood a rock mound but this has been torn down and some one has dug down into the ground beneath where it stood. East of this circle is another of the same kind of Indian mounds without the mound of rock in the middle, both these circles are about 6 feet dia. The first circle is N54 1/2 W from the old rock mound our line reached, but is only 608 varas, over on the north side at the foot of the hill is a large rock mound which stands N 62 1/2 W from the old rock mound but it is 820 varas distant.

Setting up on the Indian mound and running S52 1/2 E 750 varas we reach a rock mound which I had described in a former report as probably the original corner of 65. This rock mound stands 98 varas east and 115 varas south of the old rock mound at the end of our line from Cigar Springs. This rock mound has been partially torn down since I saw it

ALPINE, TEXAS.

some six years ago, and the lower tiers of small rock which then seemed to have been long enough in place to have sunk into the ground, do not have that appearance when uncovered, they look recent.

The small map in the corner of the Sketch forwarded herewith will give the facts as they are on the ground. I can readily understand that it is almost impossible for one who has not been on the ground to give these facts their due weight when so much ~~appear~~ depends on the appearance of the mounds and the surrounding conditions, especially as I have found it very difficult to arrive at a satisfactory conclusion on the ground. The miners working the coal near the corner of the camped on the point of the hill where the Indian mounds stand, and it is possible that they erected the large mound at the foot of the hill, and almost certain that they tore down the mound in the Indian circle, and possible that also tore down some other monument or mound that might have been the original Gano Monument. Taking all these facts into consideration I am unwilling to accept any of the unidentified mounds as the original corner of 65 and will make the S.E. Corner 65 by course and distance from Cigar Spring as the only certainly identified point of reference, unless you instruct me otherwise. I think I have given all the facts in the case and I would further state that I saw Mr. Harmon formerly County Sur. and asked him if he had ever been able to identify the S.E. Cor. 65 and he said he had not and had no further facts to add to the above statement. I also saw T.J. Miller who has done some work in that part of G4 and he said he could never satisfy himself that any of the above mentioned rock mounds were the original corner, and had no further facts to add to above statement.

2nd excess between 65 and east line of G4.

On a former run from the original N.E. Cor. 1 G.4 we found an excess east and west and also north and south and taking the location of 65 by c & d from Cigar spring, there would be a surplus of 336 varas east and west.

I have indicated on the map the method of distributing this which suggests itself to me as the better plan, that is distributing this between the state surveys on either side of the line, based on Judge Maxeys decision that a call for an open corner would not take precedence over course and distance. Kindly instruct me how you wish this surplus distributed.

3rd The location of original corner sur ~~X~~ 1 G4, 652 varas south of S.W. Cor blk 9 produces a conflict with Blk 10, and leaves an unoccupied strip between these surveys and block 9. If the call for the corner of nine can be held as showing the intended location of the north line of these surveys, we could put them in to cover the space between Blks 9 & 10.

Please instruct me how you wish me to place them on the ground. The distance from G4 to Blk 10 east line is excessive, shall I leave this unoccupied strip ~~xx~~ along the east line of Blk 10, or shall I put it in the state surveys and close on Blk 10.

The width of these strips may vary a little on a more careful survey but they are approximately correct and show the existence of, this excess and conflict.

Respectfully

R S Dod

State Sur

Coenter 16371

Answered 12-11-09 Hun

B² B⁶

After 10 days, return to

P. S. Wood

ALPINE, Brewster County, TEXAS.



*Mrs J. T. Robison
Comm. Gen Land office
Austin
Texas*

9
Counter 16372

1416

RECEIVED

DEC 16 1909

Referred to Map

ALPINE, TEXAS, Dec 13 1909

Hon. J. T. Robison,
Commissioner Gen. Land Office
Austin, Texas

Dear Sir,

I am in receipt of your favor of the 11th inst. relative to the Excess in Blk. G. 4, in which you say you are surprised that I "should allow this question to arise at this late day."

This is indeed surprising in the face of the fact ^{That} the existence of this excess was reported to the Gen. Land Office nearly four years ago in connection with the resurvey of Blk. 10 H&TC, as shown by a blue print of my sketch sent me from the Gen. Land Office with other data, at the beginning of this survey, on this sketch the excess in G4 is plainly marked, showing this fact to be of record in your office.

Also there should be in your Office a copy of a report of survey in Blk G4 last April and May, wherein all the facts are carefully rehearsed as to the excess and the location of the Cor of 65, as the location of the Watkins lands depended on these facts. This report was sent in to the Gen. Land Office and no objection made, no protest offered, no change suggested.

So that the facts reported to the Gen Land Office show that the "line from ~~xx~~ Cigar Spring Cor on the west to the Cor of survey one on the east, (which you kindly suggest is the first duty of the Surveyor) was run in 1906 and rerun carefully in 1909 and recently checked for the third time and each survey reported. As I was given no hint that my construction of G. 4 surveys based on the work shown in these reports was not acceptable to the Gen. Land Office I of course supposed that these facts were known and the work proceeded.

Of course I do not expect you to carry these details in your mind, but it does seem to me a very serious oversight on the part of the clerks who had the matter in hand, that they should have omitted all mention to you of so absolutely important a fact as that this excess had been twice reported to your office and that the whole series of surveys made in G. 4 would unquestionably be based by me on the facts and methods advanced in these reports.

Before going further in this matter of the excess in G4, I would like to call your attention to another oversight on their part. I placed the corners of surveys 296, 297, 295, near the Chisos mine, as called for by the original field notes and reported the same. I received a letter written during your absence, instructing me to move these corners, the instruction being based on a certain file #33, which was considered in your office to be of sufficient importance to override the plain calls in the fieldnotes of these surveys.

This was the first information I ever had of the existence of this important document. Why ~~it~~ was ~~it~~ not sent me with the other data for resurvey, I do not know. If it is as important as now claimed, it certainly was a serious matter to leave the surveyor without it. If it has only recently been discovered why was it not sent to me when found. And if file #33 is so important how does it compare with the file on G12.

Now as to the distribution of the excess in G. 4 I would ask you to kindly take into consideration the following facts. The facts may not have been stated fully in my last report as I supposed you were familiar with

Counter 16373

B³ B³

ALPINE, TEXAS.

the facts as already reported and I have made my reports as brief as possible since receiving a letter stating that "your Office did not care for details but for results".

The S.E. Cor 65 was originally made on the ground by Mr. Gano.

The rule for replacing a lost corner is to place it as near the original position as possible, where any traces of this can be found.

Mr. Gano located his files by a traverse, the field notes of which were of record in the Gen Land Office (though no copy has been furnished to the surveyor)

This traverse shows that he ran ~~xxx xxx~~ east from Cigar Spring,

The identified original corner N.E. 247 (formerly reported) shows the variation used and shows careful measurement in distance.

This traverse runs east until within a half mile of the hill on which a monument near a sulphur (alkali) spring is found, about where course and distance from Cigar Spring will place the witness mound to S.E. 65 at this point the traverse makes a peculiar bend, this corresponds with the bend in the creek at this point as found on the ground and shown on the Topographic map. In fact it is the only outlet or gap on an east line through these hills, near this point.

This traverse reaches and calls for the sulphur (alkali) spring which is some 100 varas north-east of the monument on the hill.

These land marks show beyond question that Mr. Gano did run a line to the point of the hill near the Sulphur spring as called for in his traverse.

Running course and distance according to the fieldnotes of surveys in G. 4 east from cigar Spring Corner reaches a point some 700 varas east of this Hill.

The field notes call for a rock mound from which a rock mound on the north side of a hill bears N52 1/2 W 764 varas.

Two rock mounds are found close to this point. one, an old mound, is within 11 varas, the other is about 120 S.E.

On testing for the witness monument from both these corners we reach the north side of the Hill, and there find one large rock mound and an Indian mound and another large mound fallen or torn down. None of these correspond closely with the fieldnotes, as reported. The fact that four of these mounds have been torn open and a hole dug under one of them, suggests the possible destruction of the original corner and witness mound. This tampering with these mounds may be accounted for by the fact that a camp of coal miners was located on this hill close to these mounds. (When I first saw the Indian mound and rock mound S.E. I was inclined to think it the original, but it has been torn down since then and I can not identify it)

The run on east and south to Gano Spring Corner shows an excess and an error in course.

To divide this excess would require moving the Cor. of 65 made from Cigar Spring to the east.

ALPINE, TEXAS.

The line of 65 by course and distance is shown here, the position of the sulphur spring and the point of hill over which Gano ran.

XX this east line 65 runs in a valley, on the west is a range of hills. It is possible to reach a hill at the course and distance in the field notes from almost any point on this line north and south, but impossible to reach anything but the middle of the valley if this line is moved east. The field notes determine the position of the corner by a point on "the north side of a hill" and there is no north side of a hill anywhere in the neighborhood except the one shown where the Indian mound stands.

To move the line east you move it away from the line run by Gano and from this natural object "the north side of a hill" called for and break the call for course and distance along the line actually run by Gano, to place it where you can not possibly reach any natural object similar to the one described, and not even true course and distance from survey one, because the excess is to be thrown in.

If it were simply a question of an excess between two corners of a survey with no intervening calls for marks or bearings it would be a different proposition, and if we did not know the direction in which Gano ran it might be a question whether to run from Cigar Springs or from Gano Spring, but knowing that Gano ran from Cigar Spring and finding land marks along the line, as Cor 247, and the bend in the creek and the gap and the Spring, we know his footsteps were from the West. Again, we also know that The Gano Spring Corner is out of place, being 650 varas south of the corner 83 H&TC 9, as described by Gano. Hence the error in his measurement would naturally be supposed to be in the location of Gano Spring corner.

We can not find the exact spot where he made his corner of 65 but we can satisfy the call to "follow his footsteps"

to be 700 varas east of the north side of a hill,
and exact course and distance,
and give every survey all the land called for in the grant.

The mining claims on 216 were located from Cigar Spring and their monuments are on the west line of that survey as at present located. To move this east would cut off part of these claims, some of them patented, in order to give a surplus to a survey that does not call for it.

All the work done by Mr. Moss and Mr. Harmon as County surveyors in locating lines and claims ~~was~~ was done from Cigar spring with no reference to any excess. A distribution of excess would probably move many of these.

In the distribution of excess in the map returned to me, no account



ALPINE, TEXAS.

is taken of the N.W. Corner of 247, The field notes call for a rock mound at this point and there is a rock mound found on the ground proper course and distance from Cigar Spring Cor. and identified on the ground by one of Ganos men who saw it put up and was brought back here to identify it for the District Court, as formerly reported to your office, surely we can not ignore this original corner to distribute an excess.

If you have any doubt as to the legality of the survey as made or any fear of contention on the part of individual owners, that can be easily settled as a matter of agreement, as they all claim their lands from Cigar Spring corner, as far as I know, and would be perfectly willing to accept this survey. Of course I would not suggest this were I not very confident that the position of the corner of 65 as reported is the true position both equitably and legally.

I am loth to trouble you about these matters and I know that you are entirely too busy to have time for detail, but so much time has been lost and so much hard work wasted by the failure to take note of the facts in my earlier reports and hence such a distorted view of the facts has been presented to you, that I venture to ask you to reconsider the instructions in your favor of the 11th in view of the facts as contained in this and former letters and reports.

I am very sorry that you have been left in ignorance of these facts until "this late date", but I do not think it can be deemed negligence on my part as they had been twice reported to your office. And I think that you will appreciate that having twice run the line between original G4 corners with great care, I did not think it necessary to repeat it, although it is the "first duty of the surveyor".

Of course, if on reconsidering the matter, you still wish the corners moved to distribute the excess I will, if you wish me to do so, put them in where you instruct me to place them, as knowing where they are I can do it more rapidly than one who had not built them.

I trust you will pardon my presumption in differing from the conclusions stated in your letter, but facts on the ground are much stronger than the same facts even clearly stated,

I must thank you for your kind and courteous treatment all through the series of vexatious delays and consequent heavy expenses incurred in the work.

Respectfully

R. S. Dod
State Sur.

1478

RECEIVED

DEC 24 1909

Referred to Map

ALPINE, TEXAS, Dec 22 1909

Mr. J. H. Walker
Acting Commissioner Gen. Land Office.

Dear Sir,

Your favor of the 20th duly received and in reply I would say that my letter relative to the existing surplus in G.4 seems to have been entire-ly misunderstood. As I understood the matter the position of the corner of 65 had already been determined by the surveys previously made and it was only a matter of a few varas one way or the other whether it was located at the old rock mound or by course and distance. I reported that the old rock mound which I had formerly identified had been pulled down and did not look like the same mound I saw when at the place before, that for this reason I was unwilling to certify to it as the mound I first saw. In fact I think it has been moved.

The distance from it to the rock mound we made as a distance mark from the corner of Sur. 1 is not the same relative distance from this rock mound as it was when we were there before. The hill is there and sulphur spring is there and the two indian mounds are there and the big rock mound on the north side of the hill is there, but the rock mounds down about the corner have certainly been tampered with. Hence I could not positively identify either of them as an original corner, but somewhere in their immediate neighborhood is where Gano must have made his corner. When I first reached this rock mound it was short 44 varas of the full distance from the west, but as reported, I found I had made an error at N.W. 216 in stepping at one rock mound and starting from another, these mounds being 46 varas apart (if my memory serves me) On the second run I reached the same point, and this last run will be within 3 vrs one way and eleven the other of the same line. ~~Now~~ So I considered this point fixed only waiting for accurate balancing of the lines to determine its position.

Counter 16377

BT

And I thought it was nearer satisfying all ^{ALPINE, TEXAS} conditions to place the corner by course and distance from Cigar Sp. than to attempt to replace the old rock mound which had, I thought, been moved.

The question which I asked referred not to the position of 65 but to the distribution of the surplus beyond 65. I had reported this as considerably less than it measured this time, but I had reason to think one or both mounds had been moved. So I reported an excess but stated that the figures were approximate and subject to correction. For the purpose of answering my question it was immaterial whether there was one or three hundred varas excess. I could give facts to show there was an excess and I wished to know how you wanted it distributed and took the liberty of suggesting a method of distribution.

My reason for putting this question before making certain of the exact amount of surplus was to economize time, if I knew on what principal to distribute the surplus, it could be distributed at the time the survey to ascertain its exact extent was being made. If I first made the survey and then reported the facts we would be idle in the field while my report was going in from Big Bend and until the matter was decided and your instructions forwarded to me. Hence, as a mere report of progress the approximate data were sent in, so that I could be instructed as to this distribution.

I do not see how it is possible to alter anything west of 65, and as far as I can see the whole question is simply what to do with the surplus east of that point.

I am rather surprised at your reference to file 33 as of no importance when in the former letter it was quoted to account for the instruction to move the corners near the Chises mine. I do not see how any position except the one in which we placed them can possibly be deduced from the fieldnotes,

Respectfully

Answered 1-5-10 Hutchinson

R S Dod

Counter 16378

B 8

Alpine, Texas,

July 8 1980

Hon. J. T. Robison,
Commissioner Gen. Land Office
Austin, Texas

Dear Sir,

In a report on progress of resurvey of Blk. G 3 Brewster Co. Texas I referred to an excess in area discovered on the Rio Grande south of the Howard Reams survey 554, and respectfully submit the following facts as the basis for that report.

In resurveying Blk. G4 we meandered the Rio Grande from the mouth of the Grand Canyon to U.S.B.M. 2053, as before reported, and found that the river as shown on the Topographic map was in almost exact accordance with our survey, but that the field notes of Blk 16 showed too little distance in easting

But if we move the surveys a little east giving a small excess to each they will fit the meanders of the river as shown by the yellow lines in the attached sketch, and nearly fit the call for the Reams corner. This Reams survey is the oldest survey in that part and its corners can be identified as before described.

In resurveying Blk. G 3, we did not actually run to the river but we did make such readings on prominent points along the river as would show that there was plenty of room south of G3 for the surveys shown in that position on the county map. The dotted line on the east of the sketch shows the position of the river at that point as above located.

Extending west and south from the corners of 62 & 56 G3, is a low flat country running down to the river and it was so evident that it was further to the river than the distance called for in the field notes of G 17 & Blk, 16, that I would have meandered the river from B.M. 2053 had it been possible to do so at the time.

We had the position of B.M. 2053, had run a line from it to the Reams corner, thence east to the S.E. cor of the Reams, thence east and south along the G 3 survey lines as shown by circles on the corners of the surveys, and had connected these lines with B.M. 2269 and several other B.M.s further east.

On checking our location of these B.M.s with their position shown on the Topographic Map, and finding that they agreed, I then sketched in the position of the Rio Grande from the U.S. survey as shown on the sketch.

This confirmed our estimate of an excess of area between the position of the river as defined by the field notes of surveys in Blk 16 and the consequent position of the river on the Co. map, and the actual position of the Rio Grande on the ground, as shown in sketch.

This is confirmed by a run made by T.J. Miller for Mr. Carnes some years ago. They ran west from the N.W. corner of survey 7 in G 17 and on reaching a point where they should by course and distance have been on the River at the S.E. Corner of sur. 44, they were actually some three miles north of the river.

In compiling the sketch I placed the Reams survey and G3 as actual found on the ground, and sketched in the river to B.M. 2053,

To put in the surveys in Blk. 16 I began at the corner of 62 G3 and ran the calls back ward reaching the river south of the Reams, giving each survey the meanders called for as shown on sketch. In filling in the Harris survey I found the field notes in the patent recorded here, so defective as to make them void, and the McCormac contradictory in themselves.

I do not think there is any question but that there is a large body of land, some five miles long and two miles wide not covered by the acreage called for by surveys shown on the Co. Map.

If Blk 16 holds to the river calls, then we must break all calls for course and distance on the meanders, and running back stop at distance called for north and throw the excess between Blk 16 and the Reams. I don't know what we could do with the Harris & McCormac their field notes are so imperfect.

If you note the position of the earlier surveys in Blk. 16 they are shown running northeast, but from sur. 37 on they call north. Now throw these north lines into a northeast course and the meanders will approximate the actual course of the river, so much so that it looks as though the river had been run and the error in course N. for N.E. occurred in making up the field notes.

These I believe are all the facts as shown by our hasty investigation and I submit them so that you may decide whether you think they justify any further survey to determine the exact acreage &c. and can instruct me how you would wish the survey made and from what point the Blk 16 surveys are to be run &c.

Respectfully

R. H. Dod
State Sur.

Coenter 16379

Sketch of certain Surveys

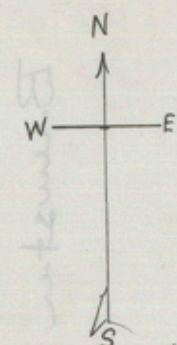
Blocks 16, G-3, G-16, G-17.
Showing their position relative to each other & to the Rio Grande.

Compiled from original field notes of surveys - field notes of actual survey of certain lines & location of Rio Grande on U.S. Top. Map.

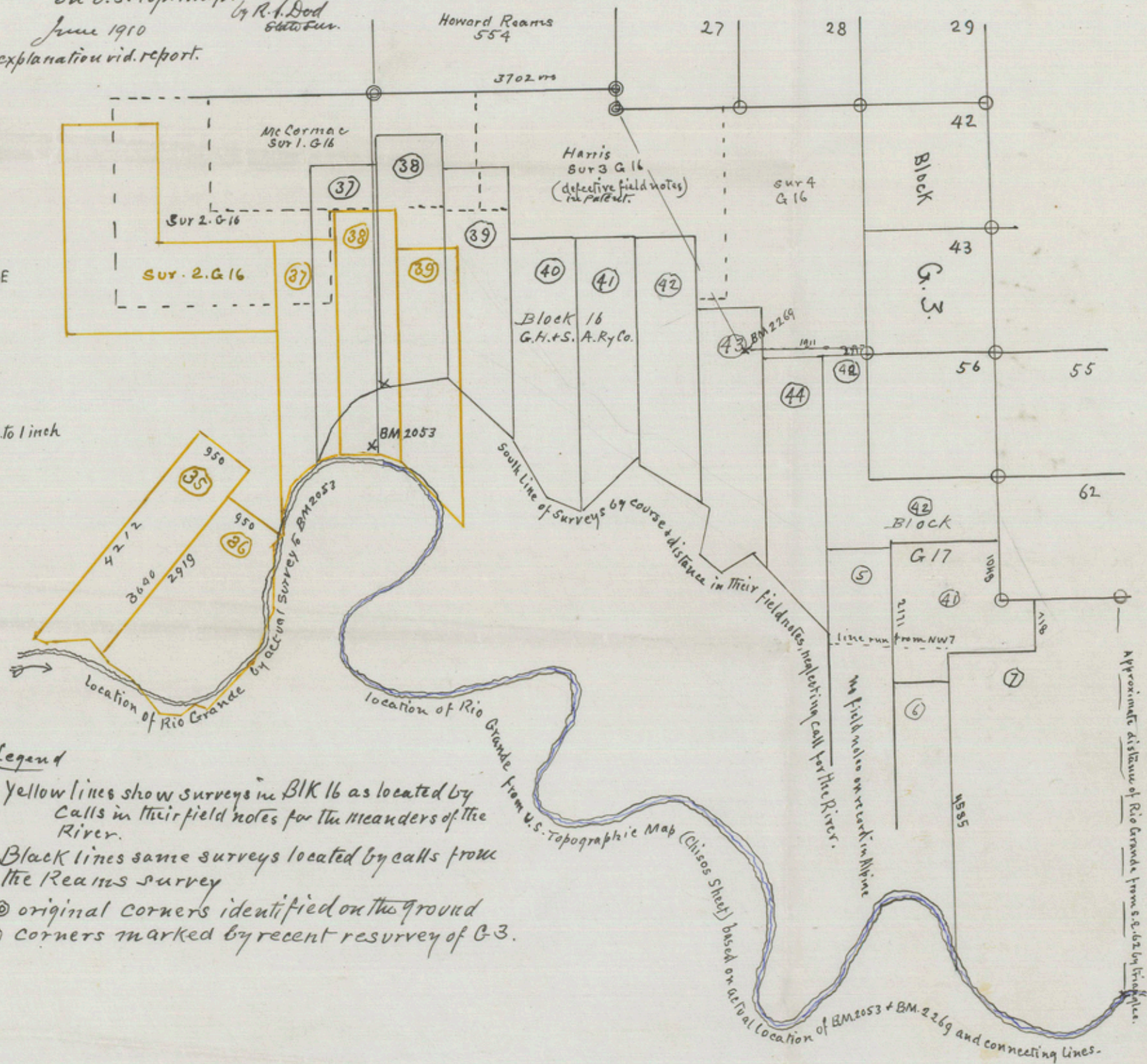
June 1910

by R. A. Dod
State Sur.

Note For fuller explanation vid. report.



Scale 2000 Yrs. to 1 inch



Legend

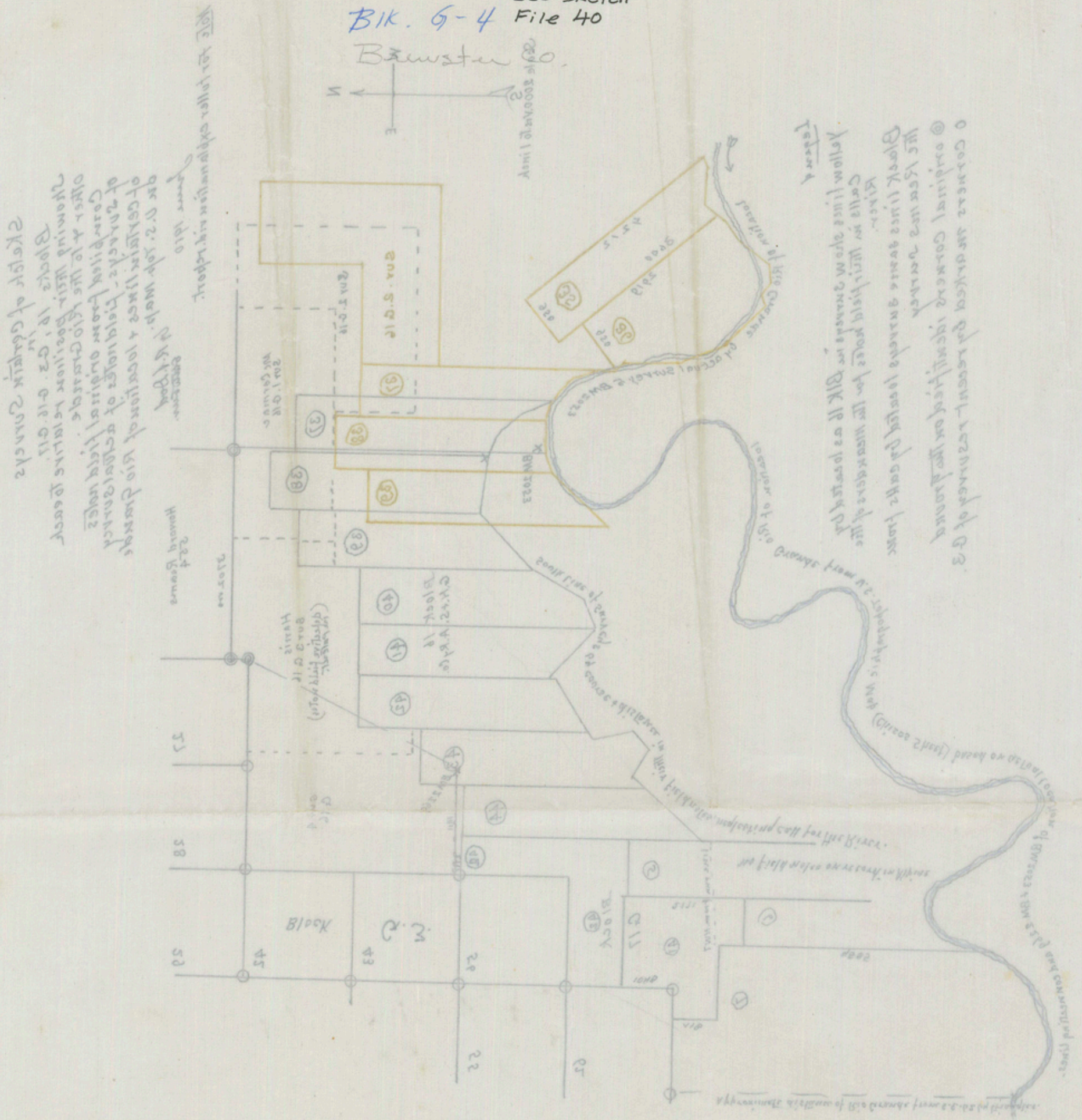
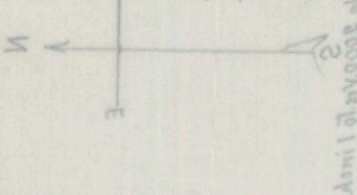
- Yellow lines show surveys in BK 16 as located by calls in their field notes for the meanders of the River.
- Black lines same surveys located by calls from the Reams survey
- © original corners identified on the ground
- o corners marked by recent resurvey of G-3.

R. S. Dod 7

See Sketch

Blk. 6-4 File 40

Brewster Co.



Alpine, Texas,

July 8 1980

Hon. J. T. Robison,
Commissioner Gen. Land Office
Austin, Texas

Dear Sir,

In a report on progress of resurvey of Blk. G 3 Brewster Co. Texas I referred to an excess in area discovered on the Rio Grande south of the Howard Reams survey 554, and respectfully submit the following facts as the basis for that report.

In resurveying Blk. G 4 we meandered the Rio Grande from the mouth of the Grand Canyon to U.S.B.M. 2053, as before reported, and found that the river as shown on the Topographic map was in almost exact accordance with our survey, but that the field notes of Blk 16 showed too little distance in easting

But if we move the surveys a little east giving a small excess to each they will fit the meanders of the river as shown by the yellow lines in the attached sketch, and nearly fit the call for the Reams corner. This Reams survey is the oldest survey in that part and its corners can be identified as before described.

In resurveying Blk. G 3, we did not actually run to the river but we did make such readings on prominent points along the river as would show that there was plenty of room south of G 3 for the surveys shown in that position on the county map. The dotted line on the east of the sketch shows the position of the river at that point as above located.

Extending west and south from the corners of 62 & 56 G 3, is a low flat country running down to the river and it was so evident that it was further to the river than the distance called for in the field notes of G 17 & Blk, 16, that I would have meandered the river from B.M. 2053 had it been possible to do so at the time.

We had the position of B.M. 2053, had run a line from it to the Reams corner, thence east to the S.E. cor of the Reams, thence east and south along the G 3 survey lines as shown by circles on the corners of the surveys, and had connected these lines with B.M. 2269 and several other B.M.s further east.

On checking our location of these B.M.s with their position shown on the Topographic Map, and finding that they agreed, I then sketched in the position of the Rio Grande from the U.S. survey as shown on the sketch.

This confirmed our estimate of an excess of area between the position of the river as defined by the field notes of surveys in Blk 16 and the consequent position of the river on the Co. map, and the actual position of the Rio Grande on the ground, as shown in sketch.

This is confirmed by a run made by T.J. Miller for Mr. Carnes some years ago. They ran west from the N.W. corner of survey 7 in G 17 and on reaching a point where they should by course and distance have been on the River at the S.E. Corner of sur. 44, they were actually some three miles north of the river.

In compiling the sketch I placed the Reams survey and G 3 as actual found on the ground, and sketched in the river to B.M. 2053,

To put in the surveys in Blk. 16 I began at the corner of 62 G 3 and ran the calls back ward reaching the river south of the Reams, giving each survey the meanders called for as shown on sketch. In filling in the Harris survey I found the field notes in the patent recorded here, so defective as to make them void, add the McCormac contradictory in themselves.

I do not think there is any question but that there is a large body of land, some five miles long and two miles wide not covered by the acreage called for by surveys shown on the Co. Map.

If Blk 16 holds to the river calls, then we must break all calls for course and distance on the meanders, and running back stop at distance called for north and throw the excess between Blk 16 and the Reams. I don't know what we could do with the Harris & McCormac their field notes are so imperfect.

If you note the position of the earlier surveys in Blk. 16 they are shown running northeast, but from sur. 37 on they call north. Now throw these north lines into a northeast course and the meanders will approximate the actual course of the river, so much so that it looks as though the river had been run and the error in course N. for N.E. occurred in making up the field notes.

These I believe are all the facts as shown by our hasty investigation and I submit them so that you may decide whether you think they justify any further survey to determine the exact acreage &c. and can instruct me how you would wish the survey made and from what point the Blk 16 surveys are to be run &c.

Respectfully

R. L. Dod
State Sur.

Counter 16379

Brewster County, Texas
 From N.E. Corner Survey No. 2, Block 15 CHASBARY, Co.

12.3 Dod File

From N.W. Cor. Surr. No. 204 BIK G 4.
 N 18 45' E 104.5
 S 48 W 355.0
 N 80 30' W 519.0
 S 82 30' W 345.0
 West 390.0
 N 70 W 3063.0
 N 4 45' W 348.0

Dod Report
 BIK. G-4

to S.E. Cor. Surr. No. 211-15 CHASBARY Co.

West	170.0	NW 204
N 15 50' W	1285.0	
N 15 W	30.0	
N 39 50' E	628.0	
North	1900.0	SW 204
N 45 W	3888.0	NW 202
South	100.0	SE 202
N 32 W	1008.0	
East	3.0	
N 19 E	195.0	
N 17 E	493.8	
N 30 15' E	316.0	
N 12 30' E	10.0	
West	7.0	
N 18 W	3234.0	NE 200
S 77 W 491.2	491.2	
S 25 W	524.0	
N 67 W	137.0	
S 40 W	154.0	
North	1900.0	
North	1900.0	
N 43 30' E	580.5	
N 24 E	1207.0	
N 66 30' W	980.8	
From N.E. Cor. 225, G. 4. Clear Sp.		
to S.W. Cor. Surr. No. 202 G. 4.		
N 15 15' E	48.0	
N 68 15' W	196.0	
S 20 W	1822.0	
S 27 30' E	242.0	
S 27 E	319.0	
S 27 15' E	455.0	
S 5 E	987.0	
S 5 30' E	979.0	
S 9 45' E	331.0	
South	2823.0	
S 15 E	304.0	
S 47 W	608.0	
S 34 30' W	498.0	
S 30 W	830.0	
S 28 W	134.0	
S 30 30' W	844.0	
S 21 W	475.0	
S 5 E	348.0	
S 3 45' E	435.0	
S 29 E	2269.0	
South	1217.0	
S 41 45' E	330.0	
S 21 30' E	108.0	
S 12 30' W	1904.0	
S 60 E	460.0	
S 24 05' E	3249.0	
S 45 E	50.0	
S 45 E	2888.0	
South	175.0	
S 79 E	2828.5	
S 44 E	1765.5	
East	7600.0	
East	135.3	
North	328.3	

M/1

RECEIVED

DEC 16 1909

Referred to Map

ALPINE TEXAS, Dec 17 1909

Robert S. Dorr
Surveyor

Commissioner of Land Office
Alpine, Texas

Dear Sir,
I have the honor to acknowledge the receipt of your letter of the 11th inst. relative to the
excuse in G. 4 in which you are surprised that I should allow
this excuse to exist at this late day.

The survey of G. 4 was made on March 10, 1909, and the location of this
excuse was shown on the map. At the time of this
survey, the land office was not aware of the existence of this
excuse. It is hereby marked, showing this
to be of record in your office.
Also there should be in your office a copy of a report of survey in
file G. 4 last April and May wherein all the facts are carefully set forth
to the excuse and the location of the G. 4, as the location of the
lands depends on these facts. This report was sent in to the land
office and no objection was made at that time. No change was
made in the facts reported to the land office about the "line"
from another survey on the west to the G. 4 survey on the east,
(which you kindly suggest in the first duty of the survey was run in 1909
and again in 1909 and recently checked for the third time and each
survey reported. As I was given no hint that my construction of G. 4 surveys
based on the work shown in these reports was not acceptable to the land
office I of course supposed that these facts were known and the work approved.
Of course I do not expect you to carry these details in your mind, but it
does seem to me a very serious oversight on the part of the clerks who had
the matter in hand, that they should have called attention to you of so
absolutely important a fact as that this excuse had been added to
your office and that the whole series of surveys made in G. 4 was
thereby rendered void.

I am sorry that in this matter of the excuse in G. 4, I would like to
call your attention to another oversight on their part. I placed the original
of survey 299, 300, 301, 302, 303, 304, 305, 306, 307, 308, 309, 310, 311, 312, 313, 314, 315, 316, 317, 318, 319, 320, 321, 322, 323, 324, 325, 326, 327, 328, 329, 330, 331, 332, 333, 334, 335, 336, 337, 338, 339, 340, 341, 342, 343, 344, 345, 346, 347, 348, 349, 350, 351, 352, 353, 354, 355, 356, 357, 358, 359, 360, 361, 362, 363, 364, 365, 366, 367, 368, 369, 370, 371, 372, 373, 374, 375, 376, 377, 378, 379, 380, 381, 382, 383, 384, 385, 386, 387, 388, 389, 390, 391, 392, 393, 394, 395, 396, 397, 398, 399, 400, 401, 402, 403, 404, 405, 406, 407, 408, 409, 410, 411, 412, 413, 414, 415, 416, 417, 418, 419, 420, 421, 422, 423, 424, 425, 426, 427, 428, 429, 430, 431, 432, 433, 434, 435, 436, 437, 438, 439, 440, 441, 442, 443, 444, 445, 446, 447, 448, 449, 450, 451, 452, 453, 454, 455, 456, 457, 458, 459, 460, 461, 462, 463, 464, 465, 466, 467, 468, 469, 470, 471, 472, 473, 474, 475, 476, 477, 478, 479, 480, 481, 482, 483, 484, 485, 486, 487, 488, 489, 490, 491, 492, 493, 494, 495, 496, 497, 498, 499, 500, 501, 502, 503, 504, 505, 506, 507, 508, 509, 510, 511, 512, 513, 514, 515, 516, 517, 518, 519, 520, 521, 522, 523, 524, 525, 526, 527, 528, 529, 530, 531, 532, 533, 534, 535, 536, 537, 538, 539, 540, 541, 542, 543, 544, 545, 546, 547, 548, 549, 550, 551, 552, 553, 554, 555, 556, 557, 558, 559, 560, 561, 562, 563, 564, 565, 566, 567, 568, 569, 570, 571, 572, 573, 574, 575, 576, 577, 578, 579, 580, 581, 582, 583, 584, 585, 586, 587, 588, 589, 590, 591, 592, 593, 594, 595, 596, 597, 598, 599, 600, 601, 602, 603, 604, 605, 606, 607, 608, 609, 610, 611, 612, 613, 614, 615, 616, 617, 618, 619, 620, 621, 622, 623, 624, 625, 626, 627, 628, 629, 630, 631, 632, 633, 634, 635, 636, 637, 638, 639, 640, 641, 642, 643, 644, 645, 646, 647, 648, 649, 650, 651, 652, 653, 654, 655, 656, 657, 658, 659, 660, 661, 662, 663, 664, 665, 666, 667, 668, 669, 670, 671, 672, 673, 674, 675, 676, 677, 678, 679, 680, 681, 682, 683, 684, 685, 686, 687, 688, 689, 690, 691, 692, 693, 694, 695, 696, 697, 698, 699, 700, 701, 702, 703, 704, 705, 706, 707, 708, 709, 710, 711, 712, 713, 714, 715, 716, 717, 718, 719, 720, 721, 722, 723, 724, 725, 726, 727, 728, 729, 730, 731, 732, 733, 734, 735, 736, 737, 738, 739, 740, 741, 742, 743, 744, 745, 746, 747, 748, 749, 750, 751, 752, 753, 754, 755, 756, 757, 758, 759, 760, 761, 762, 763, 764, 765, 766, 767, 768, 769, 770, 771, 772, 773, 774, 775, 776, 777, 778, 779, 780, 781, 782, 783, 784, 785, 786, 787, 788, 789, 790, 791, 792, 793, 794, 795, 796, 797, 798, 799, 800, 801, 802, 803, 804, 805, 806, 807, 808, 809, 810, 811, 812, 813, 814, 815, 816, 817, 818, 819, 820, 821, 822, 823, 824, 825, 826, 827, 828, 829, 830, 831, 832, 833, 834, 835, 836, 837, 838, 839, 840, 841, 842, 843, 844, 845, 846, 847, 848, 849, 850, 851, 852, 853, 854, 855, 856, 857, 858, 859, 860, 861, 862, 863, 864, 865, 866, 867, 868, 869, 870, 871, 872, 873, 874, 875, 876, 877, 878, 879, 880, 881, 882, 883, 884, 885, 886, 887, 888, 889, 890, 891, 892, 893, 894, 895, 896, 897, 898, 899, 900, 901, 902, 903, 904, 905, 906, 907, 908, 909, 910, 911, 912, 913, 914, 915, 916, 917, 918, 919, 920, 921, 922, 923, 924, 925, 926, 927, 928, 929, 930, 931, 932, 933, 934, 935, 936, 937, 938, 939, 940, 941, 942, 943, 944, 945, 946, 947, 948, 949, 950, 951, 952, 953, 954, 955, 956, 957, 958, 959, 960, 961, 962, 963, 964, 965, 966, 967, 968, 969, 970, 971, 972, 973, 974, 975, 976, 977, 978, 979, 980, 981, 982, 983, 984, 985, 986, 987, 988, 989, 990, 991, 992, 993, 994, 995, 996, 997, 998, 999, 1000.

Brewster Co. St. File Bk. G-4

Counter # 80019

Robert S. Dod

Robert S. Dod

are approximately correct and show the existence of this exact one conflict.

The angle of these strikes may vary a little on a more careful survey but they are approximately correct and show the existence of this exact one conflict.

The distance from the top of the hill to the center line of the slope of the hill is approximately 100 feet and the distance from the center line of the slope of the hill to the center of the hill is approximately 50 feet.

The location of the hill is approximately 100 feet from the center of the hill and the distance from the center of the hill to the center of the hill is approximately 50 feet.

A

Dod Reports Brewster - SK. Fl.

G-4

Some other monument or point that might have been the original point of reference. I think I have a faint recollection of the location of the monument of the original point of reference. I think I have a faint recollection of the location of the monument of the original point of reference.

Taking all these facts as into consideration I am now inclined to believe that the monument of the original point of reference was the monument of the original point of reference.

Let them put down the mound in the location of the original point of reference. I think I have a faint recollection of the location of the monument of the original point of reference.

Let them put down the mound in the location of the original point of reference. I think I have a faint recollection of the location of the monument of the original point of reference.

Let them put down the mound in the location of the original point of reference. I think I have a faint recollection of the location of the monument of the original point of reference.

Let them put down the mound in the location of the original point of reference. I think I have a faint recollection of the location of the monument of the original point of reference.

ALPINE TEXAS

[Faint, illegible handwriting, likely bleed-through from the reverse side of the paper.]

Dad

[Handwritten signature]

[Faint, mostly illegible typed text, likely bleed-through from the reverse side of the page.]

Dad Reports³

Brewster SK.F.

G-4

[Faint, mostly illegible typed text, likely bleed-through from the reverse side of the page.]

ROBERT S. DOD

Counter # 80021