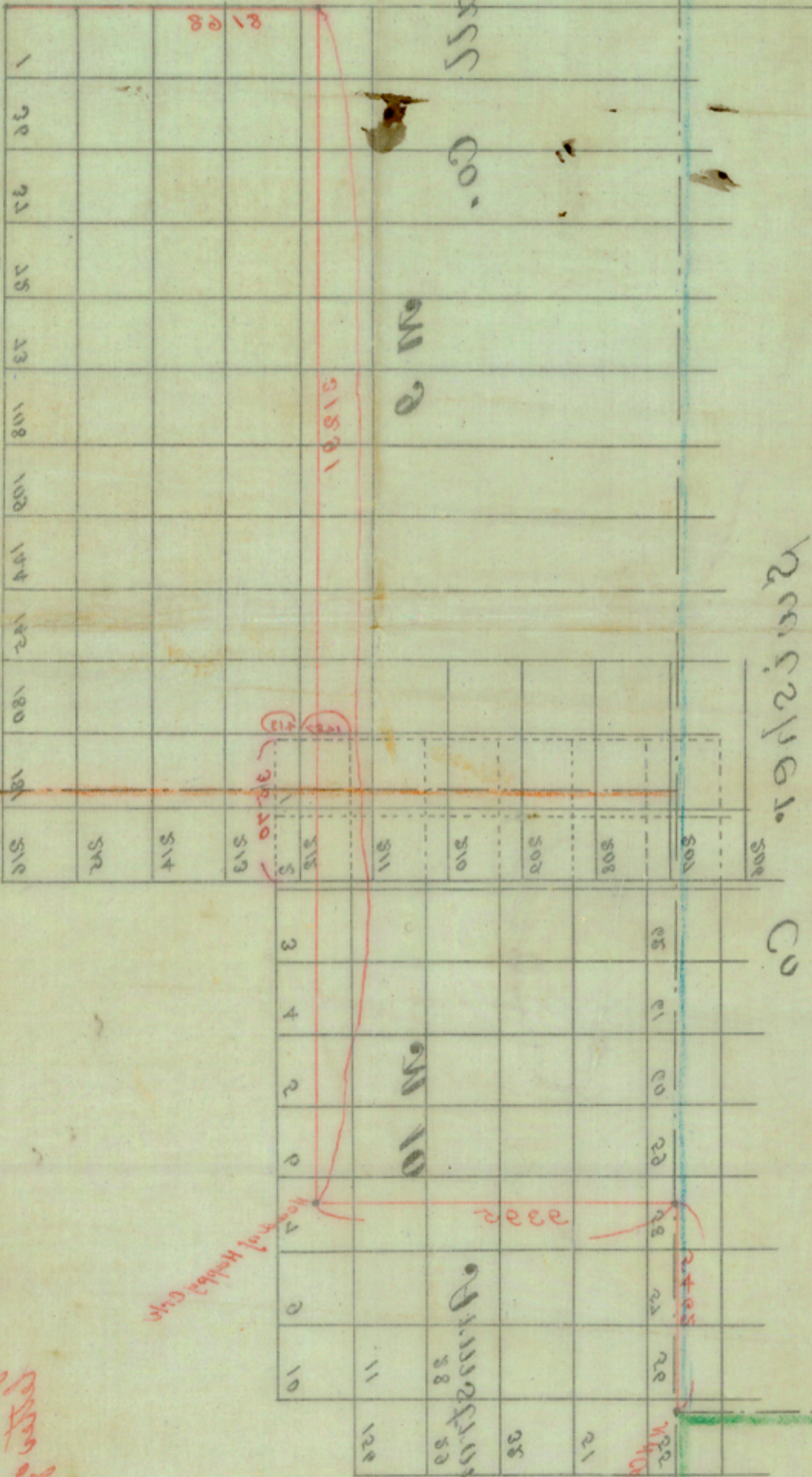


Sketch File No. D2  
 Briscoe County  
 Office Sketch  
 Dated Oct. 10, 1901.

See Sk. File No. D1. in  
 connection with this.

Canter 16411

Range 4000 N.W. 1/4 Sec. 10



Wheeler  
 10/10/101  
 Lines of the land section  
 as shown on the map  
 this survey taken back to  
 1815-18

Canter 16415

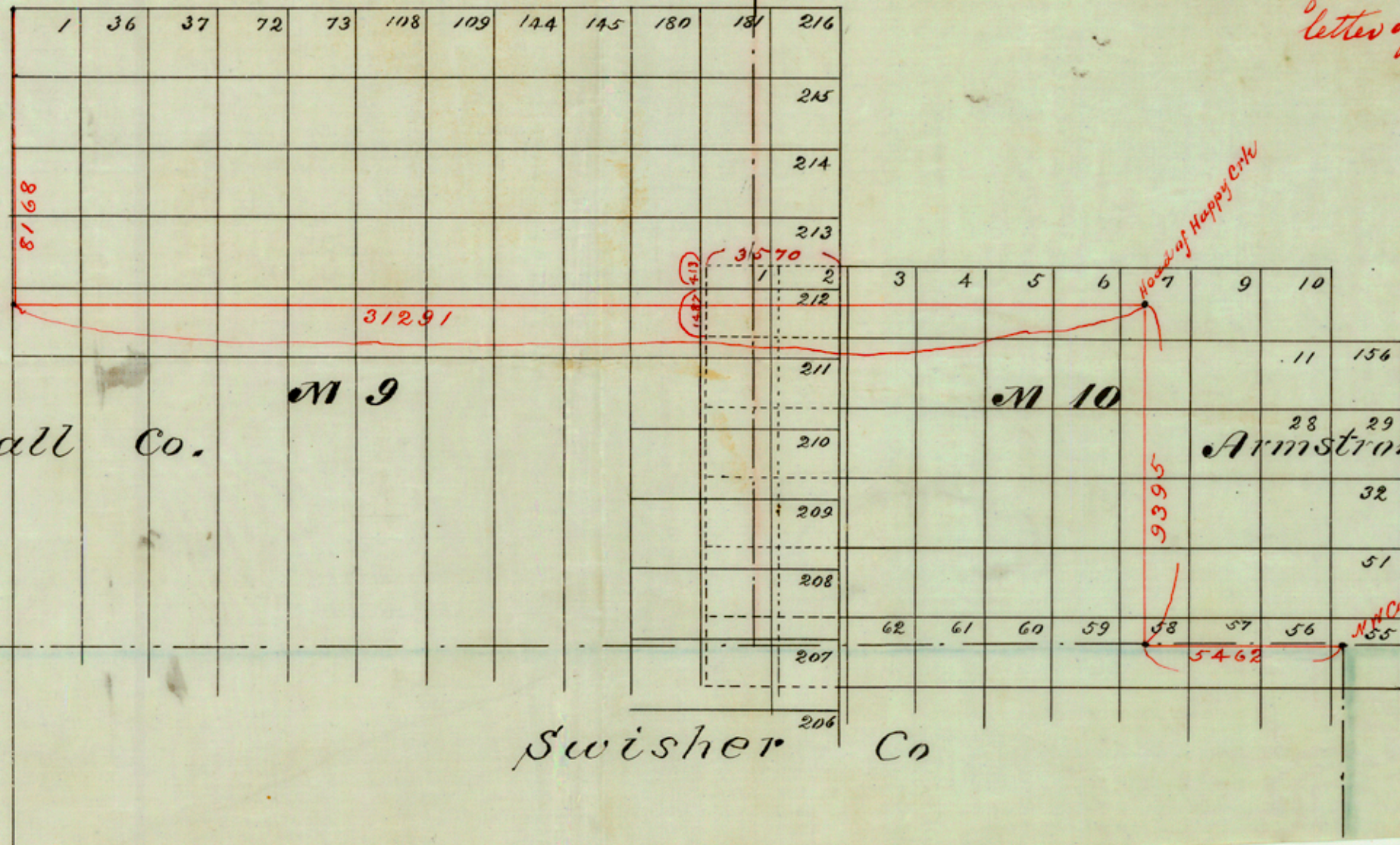
Briscoe Co

Associated Co.

Wheeler Co.

Briscoe Co.

S10D2.  
 This shows correct amt of conflict  
 of M10 with M9, as per Waller's  
 letter of 4<sup>th</sup> inst hereto attached,  
 10/10/1901  
 Hill



Connection with this.  
 See 24 File No. D1. in  
 Dated Oct 10, 1901.  
 Office Sketch  
 Briscoe County  
 Sketch File No. D5

Scale 4000 varas to inch.

Counter 16412