

1065

FILE NO. 3A

2-MI. NORTH
of Hatch Dix County

Brooks County

Filed May 9, 1939

HARSON GILES, Court

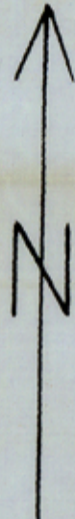
W. H. Hester

Elmer G. Gentry

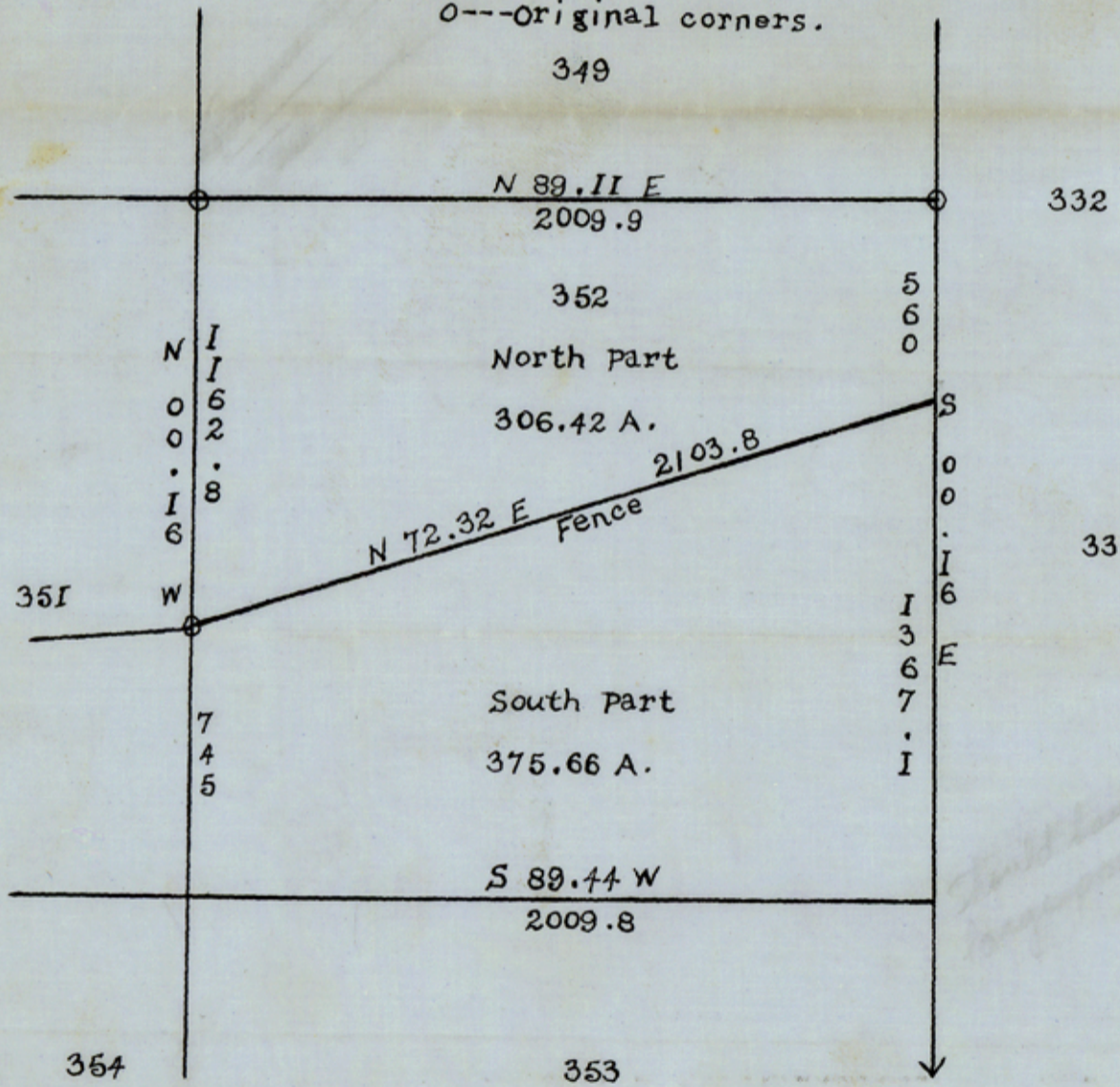
RECEIVED

MAY - 9 1939

REFERRED TO MAP



SCALE, ONE INCH 500 vs.
O---Original corners.



1901 vs to original
S.E. corner of 353.

A TRUE AND CORRECT MAP OF A SURVEY OF THE NORTH
AND SOUTH PARTS OF SUR. 352, H.E. & W.T., CERT.
823, IN BROOKS COUNTY, TEXAS. I CERTIFY.

W. H. Hester
LICENSED LAND SURVEYOR.

Counter 16542

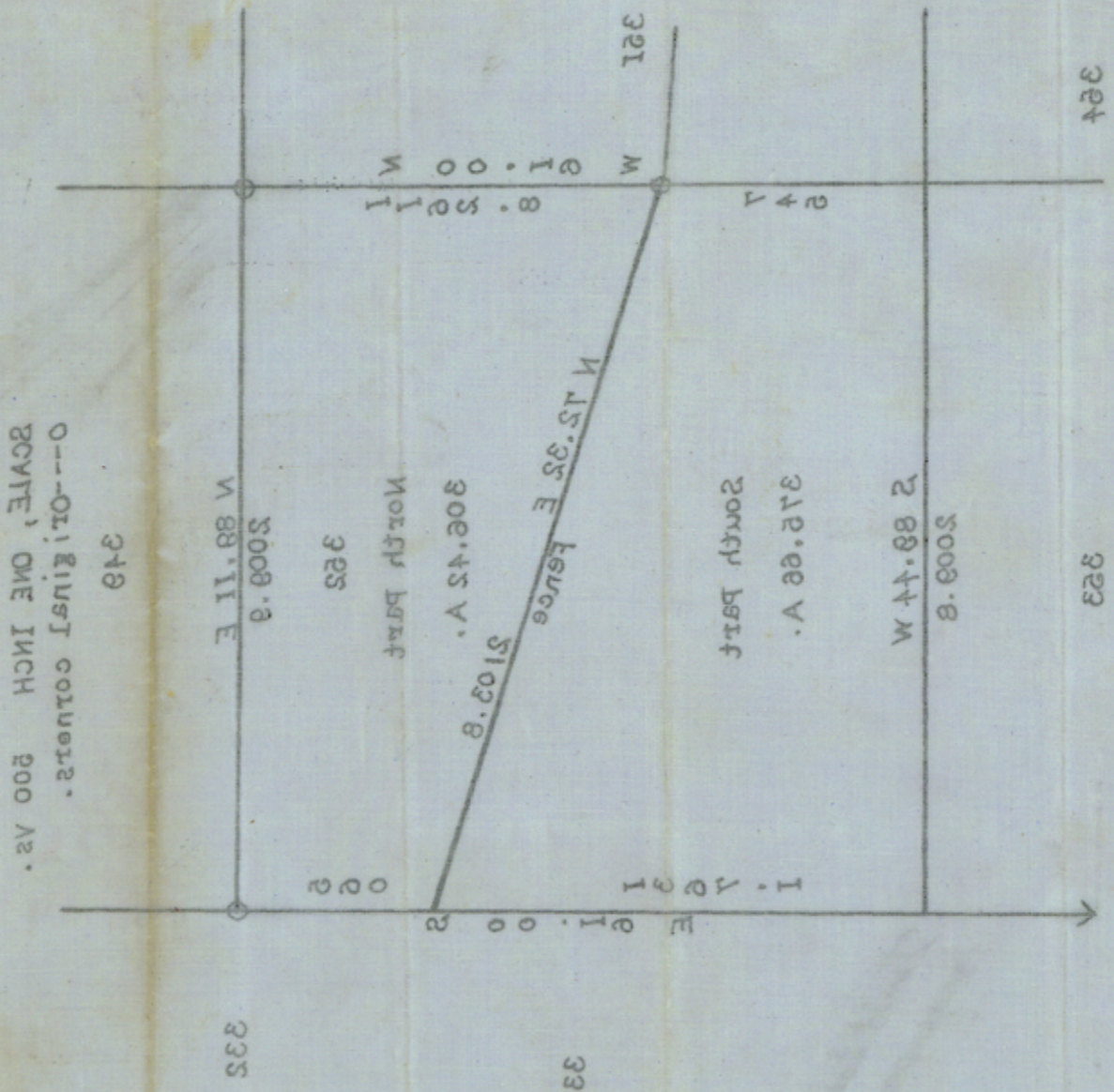
File No. 3A.

Brooks County.
by Hays Dix.
6-mi. South

Filed May 9-, 1939

BASCOM GILES, Com'r

Attest.
File Clerk



823, IN BROOKS COUNTY, TEXAS. I CERTIFY.
AND SOUTH PARTS OF SUR. 325, N.E. & W.T., CERT.
A TRUE AND CORRECT MAP OF A SURVEY OF THE NORTH

S.E. corner of 323,
1901 as to original

LICENSED LAND SURVEYOR.

Hays Dix

Counter 16543

Counter 10245

RECEIVED

MAY - 9 1939