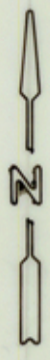
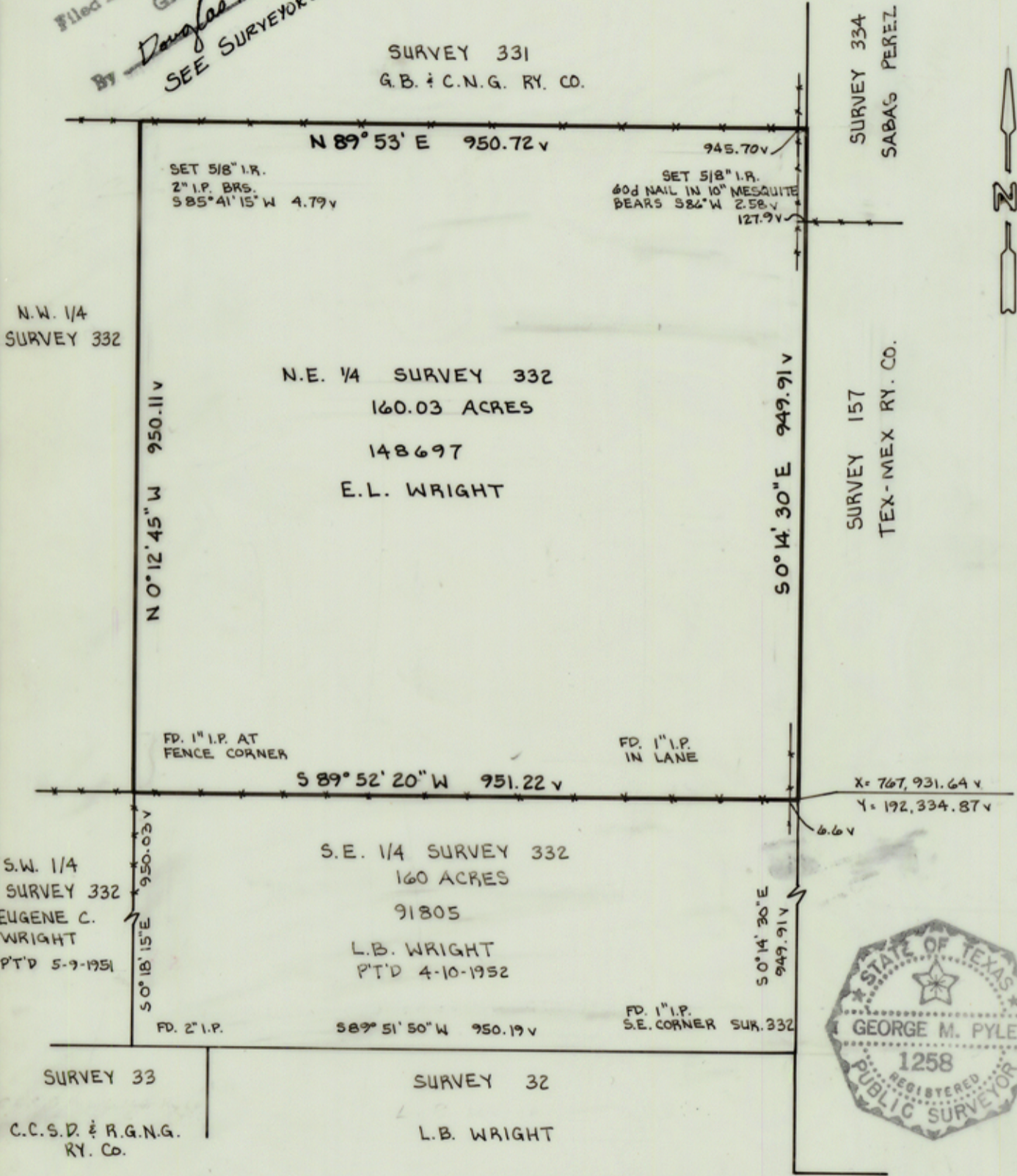


File No. SKETCH FILE 9
 NE 1/4 OF SURVEY 332, G.B. & C.N.G. RY. CO. County
 Filed Mar. 11 19 88
 By Douglas Howard GARRY MAURO, Com'r
 SEE SURVEYOR'S REPORT IN 148695



SKETCH

OF N.E. 1/4 OF SURVEY 332, G.B. & C.N.G. RY. CO., CERT. NO. 207
 BROOKS COUNTY, TEXAS.

BEARINGS BASED ON TEXAS COORDINATE SYSTEM, SOUTH ZONE
 SURFACE COORDINATES.

George M. Pyle

JOB NO. 27411
 3-2-88
 SCALE: 1" = 200 VARAS

Counter 16571

RECEIVED
 MAR 11 1988
 COUNTY CLERK'S OFFICE