

Files 11 & 11(a)

Brown Co.

2 connections between  
W. P. Brewster and  
Jesse Dickenson in the  
N. E. part of said Co.

Sketch File No. 11 (of 11)  
~~File No. 11~~  
Brown Co.

10

Surveyor's Office  
Filed Feb. 28/72

190  
R. G. Armstrong  
Surveyor  
North Brownwood.  
H. P. Brewster  
Contractor between  
N. P. Brewster and  
Jesse Dickinson  
Surveyor's Office 11

10  
Jesse Dickinson

I R. G. Armstrong Deputy Surveyor Brown District do hereby  
Certify that the N.E. Corner of Survey No 790 made  
for H. P. Brewster does bear N 68° 46' W 5975 varas  
from the N.W. Corner of Survey No 10 made for  
Jesse Dickinson by actual measurement

This 25 day January 1872.

By Fisk District R. G. Armstrong Deputy  
Surveyor Brown District  
Surveyor Brown District



Counter 16601

Counter 16600

*(Brown Co.)*

Sketch File No. 11(a)

~~file # 7~~

Brown Co.

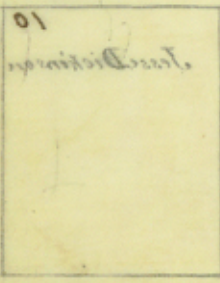
Surveyors Sketch

filed febr. 23/72

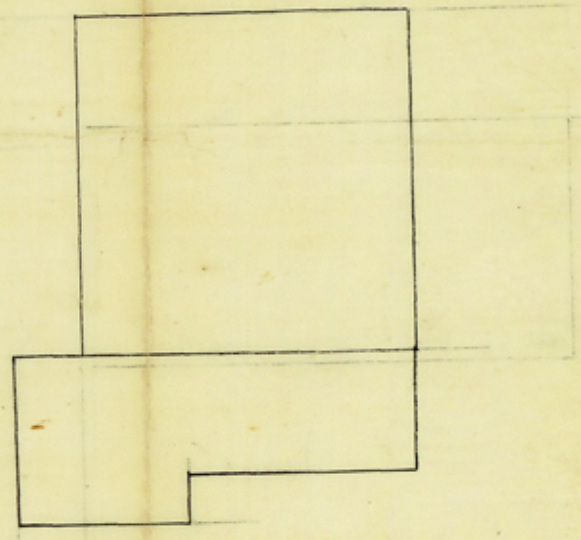
R.G. Armstrong <sup>Thompson</sup> Sketch

2 1/2 Mi. North Brownwood.

Connection between  
W.P. Brewster and  
Jesse Dickenson  
compare file 11



*(Mirrored bleed-through text from the reverse side of the page)*



*(Faint mirrored text at the bottom left)*

Coventry 16601