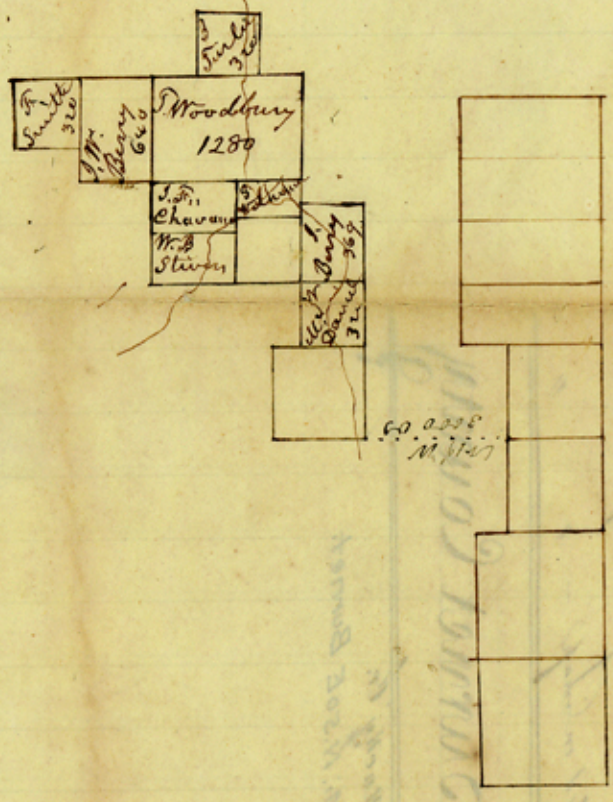


North
↑



20 Mi. N. W. of Burnet

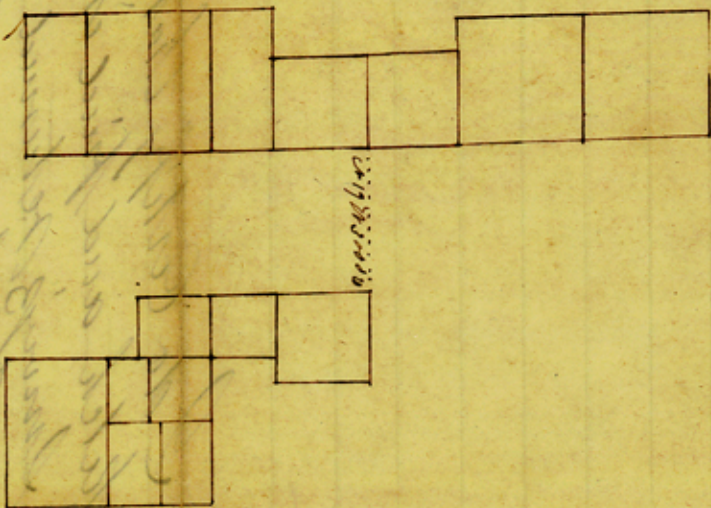
State of Texas }
 District of Milam } I do Certify that I have examined the above sketch and find it is a correct representation of the survey returned to this office by Matthias Wilbinger Esq. Surveyor of said District Given at Caldwell this 31st day of July 1848.
 James Hawlet
 District Surveyor

July 20
Milam District

Sketch - Southern waters of
the Sainpasas.
returned August 17. 1848.
Plotted on map - " "

Burnet County

On Rocky Cr.
20 Mi. N. 50 E Burnet.



Counters 16691