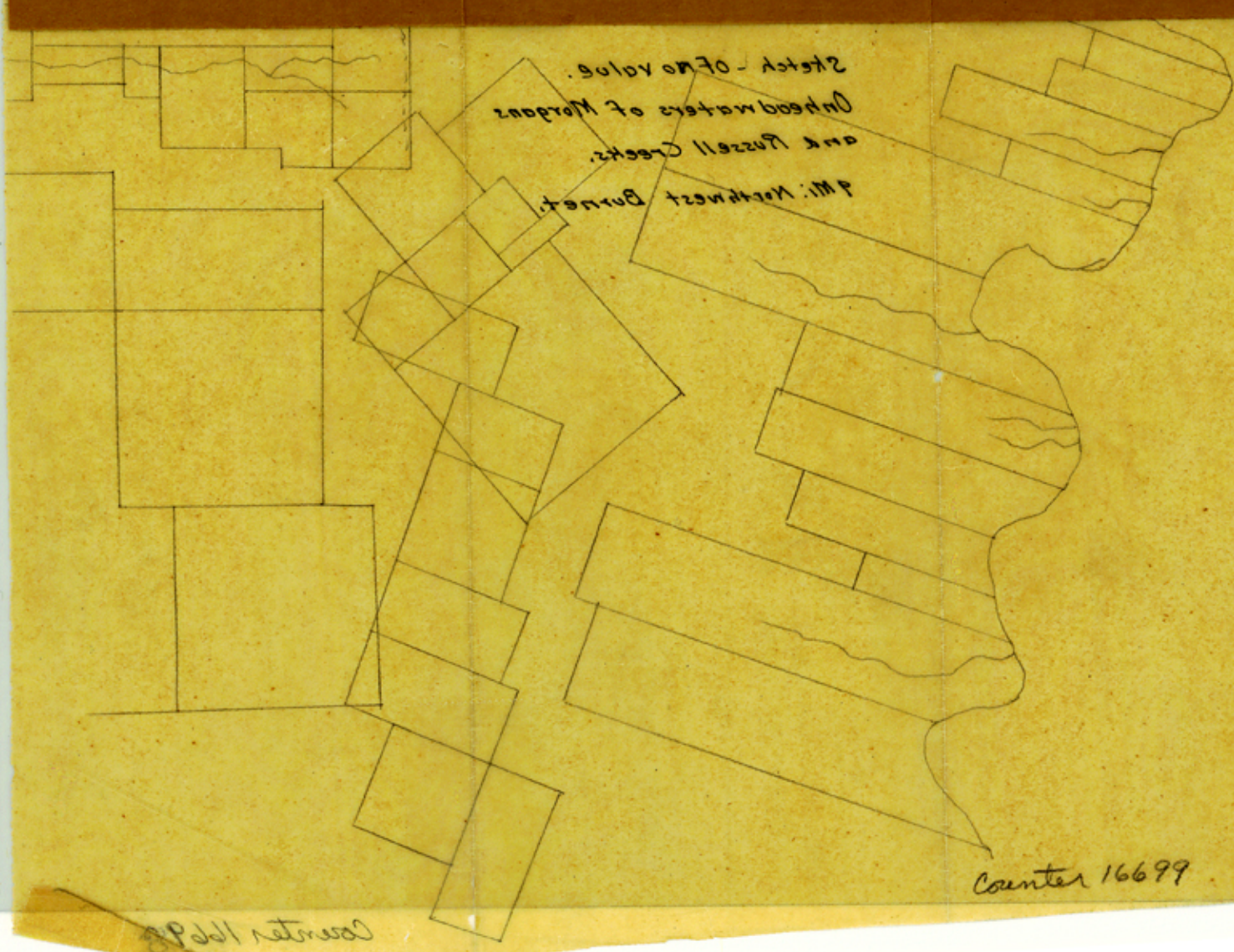
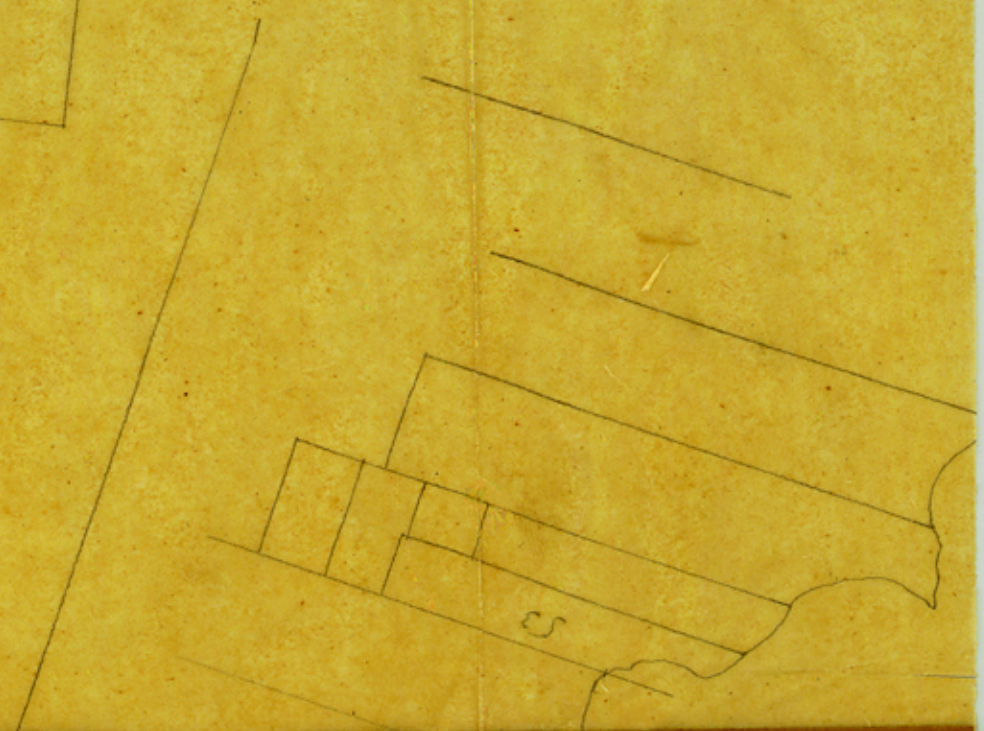
A hand-drawn sketch on aged, yellowish paper showing a complex arrangement of rectangular land parcels. The parcels are outlined in pencil and some are filled with a dark brown color. A winding line, possibly representing a creek or road, crosses the parcels. The sketch is divided into several sections by a horizontal strip of dark brown tape. The paper has a vertical crease down the center and some irregular edges.

Pile 14. Burnet Co. 18

Sketch - of No value.
On headwaters of Morgans
and Russell Creeks.
9 Mi. Northwest Burnet.

PP201 returned

Counter 16698



Sketch - of no value.
 On the waters of Morgan
 and Russell Creeks.
 by Mr. Nathaniel Burnett.

Counter 16699

Counter 16698