

257

Melau Preempt.

Surveyors Expt.

Letter

Filed Nov 5, 1872

Burnet Co Stk File 24

Caunter 16721



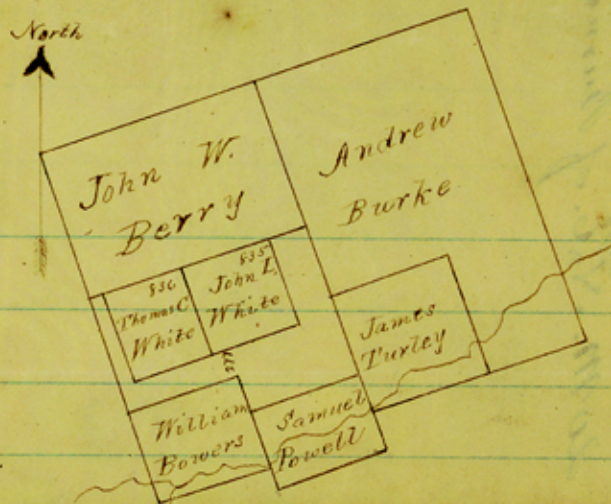
Burnet Burnet County Texas  
Feb 24<sup>th</sup> 1872

Jacob Kuechler  
Com. Gen. Land Office  
Sir

In reply to your statement concerning John L. White's and Thomas C. White's surveys (Files 257 and 258 Milam Preemption) I have the honor to furnish you the enclosed sketch showing that these surveys do not conflict with the William Bowers survey on the ground. The apparent conflict is caused by an error in the field notes of the Samuel Powell survey which claims to begin 300 or 310 ft from James Turkey's N. W. corner but in reality it is much over that distance from said corner. This error will appear in the calls for Rocky Creek as given in the Turkey and Powell field notes.

Yours Very Respectfully  
Thomas A. Chamberlain  
Surveyor of Burnet Co.





Scale 2000 vs. to the inch

I Thomas A. Chamberlain, Surveyor of Burnet County  
do hereby certify that the foregoing sketch is correct  
from actual survey on the ground, and that the  
N.E. corner of William Bowers survey stands  
277 vs 296 from the South boundary line of  
John L. White's survey

Feb 24<sup>th</sup> 1872

Thomas A. Chamberlain

Surveyor of Burnet County



Burnet Co.

Surveyors Sketch  
and Statement.

Filed March 16/92.

by E. S. Huntley.

On Rocky Cr. about  
20 M. N. <sup>50<sup>th</sup></sup> E. of Burnet

Filed Nov 5, 1892

Sketch

Michigan Township

20<sup>th</sup> E.