

Sketch File No. 26

~~1870~~
Burnet Co.

Sketch & Statement
by H.C. Fountain
Dated - 1870 - Surveyed
Filed Aug. 13, 1873

Surveyors sketch.

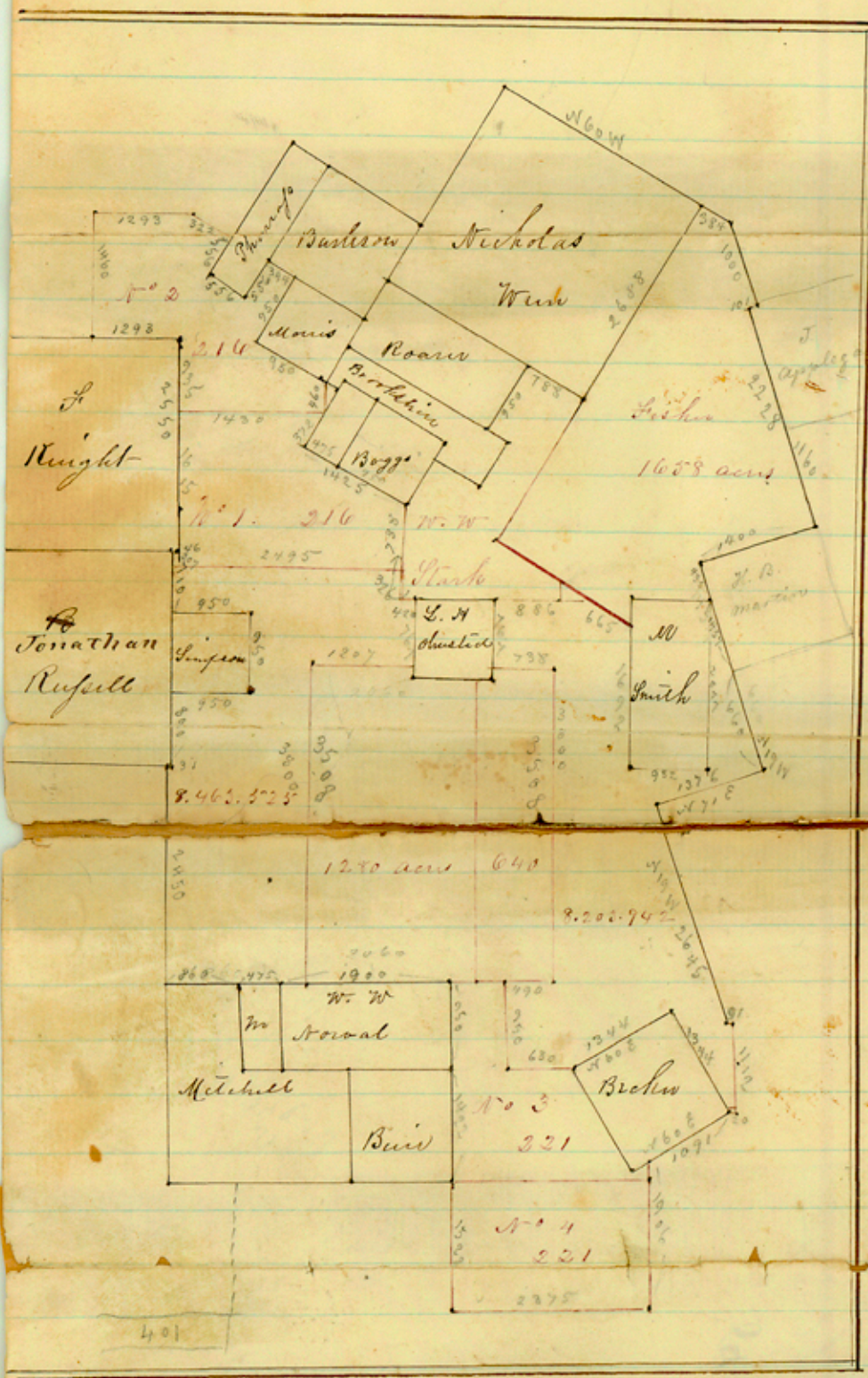
Sketch 26

13 Mi. N25° W
About ~~N. M. S. W.~~
of Burnet.

County 16727

Filed Aug 13, 1873
D. G. & Keener
exp

255 210
 1415 950
 2550 2550



The foregoing is a sketch of 17m Surveys made for Messrs Ramsdell & Hanna on the headwaters of Morgan Creek in Burnett Co. comprising an aggregate of 9730 Acres
 Field Notes

Beginning at the N.W. corner of N.B. Mitchell's 640, a pile of rocks from which marked a Cedar H. West 17°
 Thence East 860 v. the N.W. corner of Mitchell's 80. a rock mound a Live Oak bears S 87° 10' a do N 87° 00'.
 Thence East 475 v. the N.W. corner laid past. a cedar bears N 86° 14' v. a do S 34° 05'. Thence East 1770 v. Cross Morgan
 Creek, 1700 v. a rock mound. a Post Oak bears S 27° 15' v. a Blackjack N 20° 13' v. Thence South 950 v. v. do
 the N.W. corner of Buir a Post Oak bears S 1° 05' v. a do S 27° W 47'. Thence South 1422 v. the S.W. corner of Buir
 a Live Oak bears S 17° W 37', a do S 17° W 37'. Thence South 1522 v. a rock mound, Thence East 2375 v. a
 Rock Mound Thence North 1522 v. pass the N.W. corner of N° 4²¹ 1906 v. the South line of J. Beckers 320
 Thence N 60° W 1091 v. Beckers East corner. a Post Oak bears S 77° 05' v. Thence East 20 v. Thence North 1112 v.
 Thence West 91 v. the S.W. corner of a tract of Williamson's School Land, a Live Oak bears N 14° W 17' v. a Blackjack
 N 37° W 16 v. Thence N 17° W 2645 v. a rock mound. Thence N 71° W 1376 v. a rock mound. Thence S 1° W 10 v.
 bears S 10° W 18 v. a do N 57° W 50 v. Thence N 17° W 660 v. pass the S.W. corner of Martin, a Blackjack N 81° W 57'. a do
 S 47° W 4 v. Thence N 17° W 1457 v. pass the N.W. corner of Milton Smith a Live Oak bears N 1° W 57' v. a do N 13° W
 49 v. Thence N 17° W 435 v. the N.W. corner N.B. Martin (Bearings destroyed) Thence N 71° W 1400 v. a rock
 mound from which a Live Oak H bears S 60° W 12 v. Thence N 17° W 1160 v. pass Applegait's S.W. corner
 3238 v. his N.W. corner from which a Live Oak bears N 71° W 3 v. a do N 10° W 13 v. 2703 v. made a
 corner (no bearings) Thence N 71° W 101 v. a rock mound Thence N 17° W 1000 v. a rock mound on the
 West line of J. B. Clusters 100 survey. Thence N 60° W 384 v. the N.W. corner of Nicholas West (Bearings
 destroyed) Thence S 30° W 2688 v. N. West, S.W. corner (Bearings destroyed) Thence N 60° W 788 v. the N.W.
 corner of the Roarce survey. Thence S 30° W 950 v. the S.W. corner of same Thence around the
 East end of a small survey in the name of Brookshire to another small survey for Boyce, Thence
 S 30° W to Boyce's S.W. corner, Thence N 60° W 1425 v. the S.W. corner of a tract in the name of Wilson
 Thence N 30° W 372 v. a rock mound on Wilson's West line, Thence N 4600 v. the S.W. corner of Morris,
 100 acre survey. Thence N 60° W 950 v. the S.W. corner, Thence N 60° W 950 v. the N.W. corner on the South line of Burlison's tract, Thence N 60° W
 394 v. a rock mound (Bearings not summit) Thence S 30° W 556 v. Thence N 60° W 556 v. Thence N 30° W 556 v. Thence N 60° W 322 v. Thence
 West 1273 v. Thence South 1460 v. Thence East 1273 v. the N.W. corner of the Knight League, Thence South 2550 v. the S.W. corner of
 same Thence West 46 v. the N.W. corner of the Russell League, Thence South 710 v. the N.W. corner of the L. Simpson tract Thence East 750 v.
 the N.W. corner of same, Thence South 950 v. the S.W. corner, Thence West 950 v. the S.W. corner, Thence South 870 v. the S.W. corner of the
 Russell League. Thence West 31 v. Thence South 2450 v. the beginning.

Surveyed 1870
 N. C. Fountain Surveyor
 Counter 16728

Sketch 250.



Scale: 1000 yards to
an inch

Sketch showing the true position
of the Hickman League, as given
by Surveyor of Burnet Co
in making surveys of E. T. R.
Co.
Counter 16759