



COMMISSION

J. H. KULTGEN, CHAIRMAN
HERBERT C. PETRY, JR.
GARRETT MORRIS

State
TEXAS HIGHWAY DEPARTMENT

AUSTIN, TEXAS 78703

STATE HIGHWAY ENGINEER
J. C. DINGWALL

September 17, 1968

IN REPLY REFER TO
FILE NO. D-15

Cameron County
Queen Isabella Causeway
Park Road 100

Mr. Jerry Sadler
Commissioner
General Land Office
Austin, Texas 78701

Dear Mr. Sadler:

Reference is made to our letter dated August 30, 1968 concerning the right of way for the Port Isabell-Padre Island Causeway. We have submitted a map and resolution executed by Cameron County showing the right of way needed for construction and operation of the causeway. In accordance with Legislative Article 6795b-1, V.C.S., the County was charged with the responsibility of building and operating the causeway. Subsequently the Highway Department has assumed control and operation of the causeway and it is necessary that we have the authority to protect the right of way from encroachment by others.

Please advise if the material submitted is adequate to establish our rights to continue operation and protect the right of way from encroachments.

Sincerely yours

J. C. Dingwall
State Highway Engineer

By: *A. H. Christian*
A. H. Christian
Right of Way Engineer

RECEIVED

SEP 19 1968

General Land Office

Counter 17024

Sh file 4



COMMISSION
J. H. KULTGEN, CHAIRMAN
HERBERT C. PETRY, JR.
GARRETT MORRIS

TEXAS HIGHWAY DEPARTMENT

AUSTIN, TEXAS 78703

August 30, 1968

STATE HIGHWAY ENGINEER
J. C. DINGWALL

Handwritten signature/initials

Large handwritten circle with 'J' inside

IN REPLY REFER TO
FILE NO. D-15

Mr. Jerry Sadler
Commissioner
General Land Office
Austin, Texas

Dear Sir:

In connection with the Highway Department assuming control of the Port Isabell Causeway, it has become necessary to establish the right of way width required for maintenance and proper function of the facility. In accordance with Article 6795b-1, V.C.S., the County was charged with the responsibility for building and operating the causeway. In order for there to be an official record of the right of way required for proper operation of the causeway, the Commissioners' Court of Cameron County has passed a resolution which defines the right of way width as 1100 feet or 550 feet on each side of the survey centerline established prior to the construction of the existing Laguna Madre Causeway, extending from the east line of Patent No. 333 to the west shoreline of Padre Island.

We are attaching a signed copy of the resolution passed by the Commissioners' Court of Cameron County and a copy of a map prepared for the Port Isabell-Padre Island Causeway which we request be filed for record in order to protect the Highway Department's interest in the causeway right of way.

Sincerely yours

J. C. Dingwall
State Highway Engineer

By: *A. H. Christian*
A. H. Christian
Right of Way Engineer

RECEIVED

AUG 31 1968

General Land Office

Attachments

Counter 17025

Forbes

September 24, 1968

Texas Highway Department
Austin, Texas 78703

Re: Your File No. D-15
Port Isabel-Padre Island
Causeway

Attention: Mr. A. H. Christian
Right of Way Engineer

Dear Sir:

In compliance with your requests of August 30, 1968,
and of September 17, 1968, please be advised as follows:

The Resolution of the Commissioner's Court of Cameron
County and the plat submitted to us have been filed as
Cameron County, Sketch File 4.

These have been filed under the provisions of Article
6795b-1, VTCS.

Sincerely yours,

JS:kk

JERRY SADLER, Commissioner

Counter 17024

0349

22

D.T. Dozier xxxxxx

FIELD NOTES FOR BRIDGE SITE
CROSSING
BOCA CHICA CHANNEL

Beginning at a point in the north right-of-way line of State Highway #4, said point being N. 36 deg. 47' E., 109.0 feet from the centerline of said State Highway #4 at Engineer's Station 1143+31.6, said station being N. 53 deg. 22' E., 19,279.69 feet from International Boundary Commission Monument #54;

Thence S. 76 deg. 42' E., following the north right-of-way line of State Highway #4, 327.09 feet to a point;

Thence N. 36 deg. 47' E., 300.0 feet from and parallel to the centerline of proposed bridge, 875.76 feet to a point;

Thence N. 53 deg. 13' W., 600.0 feet to a point;

Thence S. 36 deg. 47' W., parallel to and 300.0 feet from the centerline of proposed bridge, 1136.44 feet to a point in the north right-of-way line of State Highway #4;

Thence S. 76 deg. 42' E., following the north right-of-way line of State Highway #4, 327.09 feet to the point of beginning.

CONTAINING 13.86 acres of land, more or less.

RECEIVED
APR 4 - 1946
REFERRED TO SCHOOL

+ map

ata/r
4.2.46

Counter 17027

RESOLUTION

WHEREAS, in Cameron County, the Commissioners' Court presented to the Texas Highway Commission a problem relative to road service, from State Highway 100 in Port Isabel through Port Isabel to the Laguna Madre Bridge, thence across the bridge and up Padre Island to the Cameron-Willacy County Line; and

WHEREAS, the Texas Highway Commission reviewed this problem and by Highway Commission Minute No. 59893, made a proposal with certain conditions to be met by the County of Cameron; and

WHEREAS, Cameron County, through its Commissioners' Court, accepted and met those conditions, by the Commissioners' Court action dated February 5, 1968; and

WHEREAS it has become necessary to define the width of the right of way across the Laguna Madre for purposes of construction, re-construction, and/or maintenance; and

WHEREAS, originally the regular right of way across the Laguna Madre was defined in width as 550 feet on each side of the survey centerline established prior to the construction of the existing Laguna Madre causeway, extending from the East line of Patent No. 333 (Governor R. S. Sterling to the City of Port Isabel), Easterly to the West shoreline of Padre Island; and

WHEREAS, during construction, this width of right of way was necessary, and during the time the County of Cameron operated this travel facility across the Laguna Madre, this right of way width was necessary to adequately serve the traveling public;

NOW, THEREFORE, be it resolved by the County of Cameron that this right of way, as described above, pass to the State of Texas.

RECEIVED

AUG 31 1968

General Land Office

11/23/68 32-30 NOV 1968

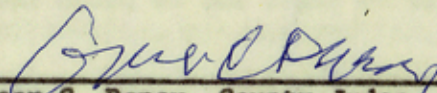
Counters 17029

IN THE MATTER OF PASSING RESOLUTION
RELATIVE TO RIGHTS OF WAY IN LAGUNA MADRE

On this the 19th day of August, 1968, at a Special
Session of the Commissioners' Court of Cameron County, a quorum being present, the
above matter came to be considered, and

Upon motion duly made by Commissioner T. R. Hunt,
duly seconded by Commissioner Adolph Thomae, Jr. and carried,

It is ordered by the Commissioners' Court of Cameron County that a copy
of the Resolution relative to rights of way in the Laguna Madre be furnished to the
State of Texas to further support the State of Texas' claim to rights of way referred
to in the Resolution.



Oscar C. Dancy, County Judge

* * *

THE STATE OF TEXAS X
 X
COUNTY OF CAMERON X

I, J. H. Diltz, Clerk of the County Court of Cameron County, Texas, do
hereby certify that the above and foregoing is a full, true and correct copy of the
Order of which it purports to be a copy as it appears of record in the Minutes of
the Commissioners' Court of Cameron County, Texas.

In testimony whereof, witness my hand and the Seal of said Court at office
in the City of Brownsville, this the 21st day of August, 1968.

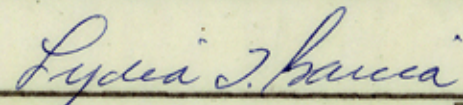
RECEIVED

AUG 31 1968

General Land Office

J. H. Diltz

J. H. Diltz, Clerk of the County Court
of Cameron County, Texas, and Ex-officio
Clerk of the Commissioners' Court

By: 

Deputy

Counter 17028

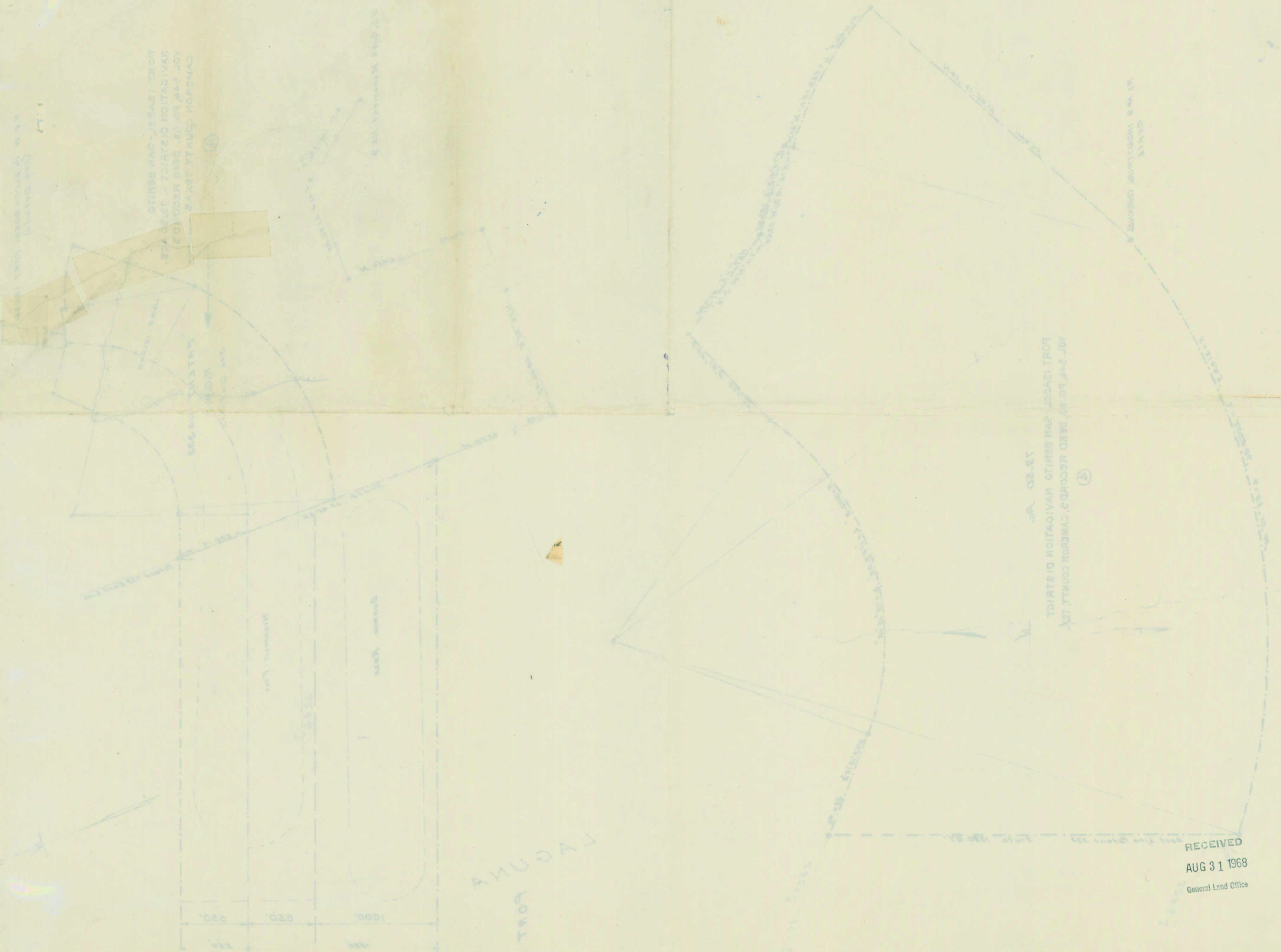
File No. Sketch File 4
 Cameron County
 Port Isabel - Padre Island Causeway
 Filed Aug. 31 1968
 JERRY W. OLIVER, Clerk
 By H. Forbes

RECEIVED
 AUG 27 1968

Cameron SK File #4

PATENT MAP F.O.W.

RECEIVED
 AUG 31 1968
 General Land Office

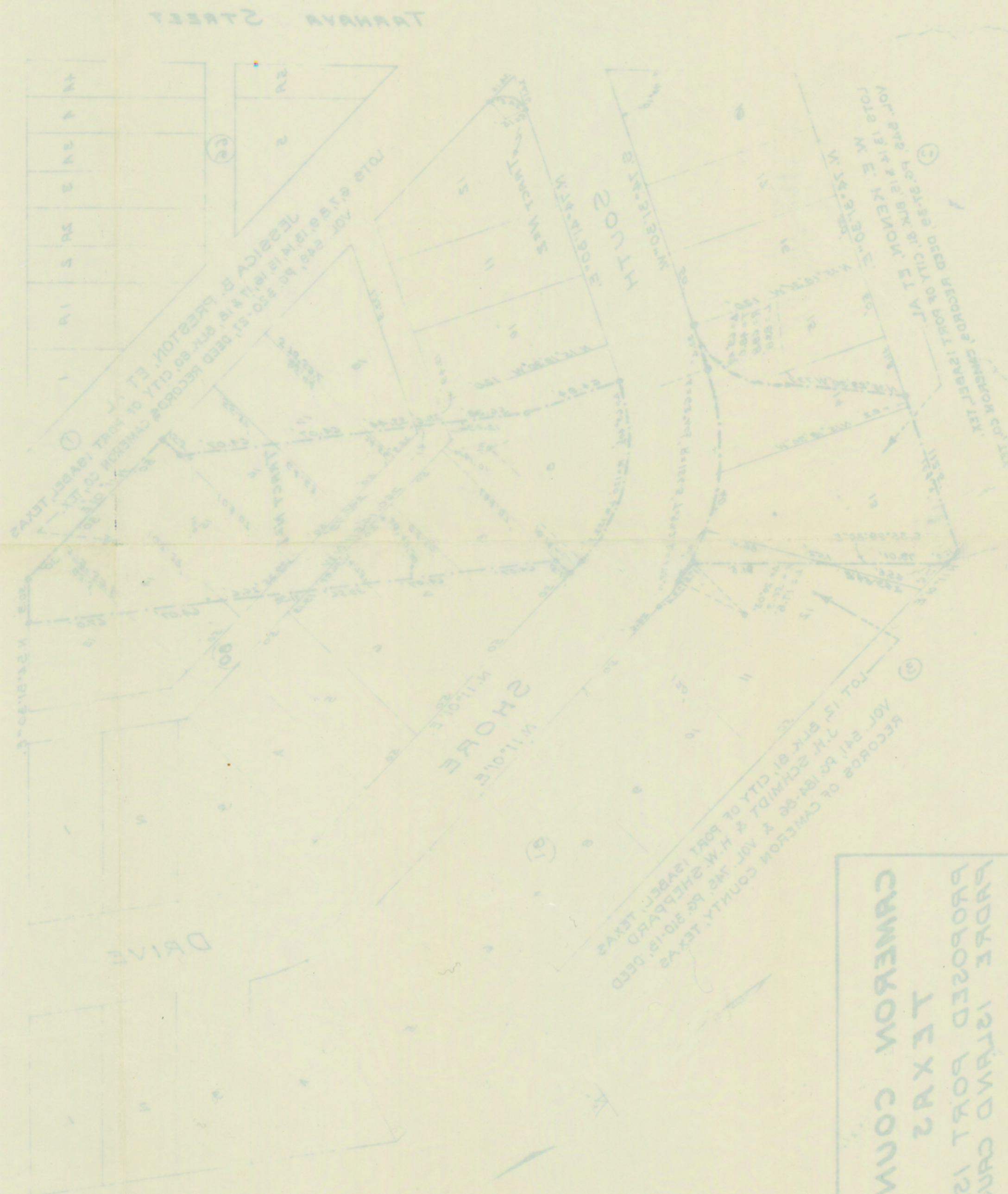


MADRE

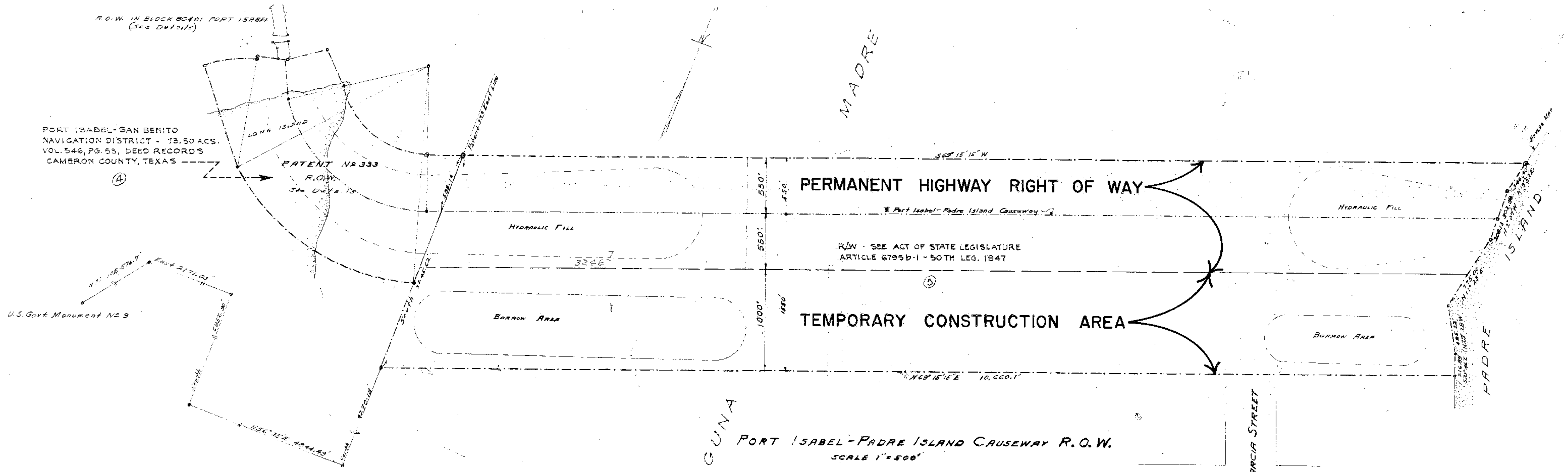
PERMANENT HIGHWAY RIGHT OF WAY
 TEMPORARY CONSTRUCTION AREA

ARTICLE 6582-B-1 - 50TH LEG 1941
 R.O.W. - SEE ACT ON STATE LEGISLATURE

LAGUNA
 PORT ISABEL - PADRE ISLAND CAUSEWAY F.O.W.
 SCALE 1"=200'



CAMERON COUNTY
 PROPOSED PORT ISABEL
 TEXAS



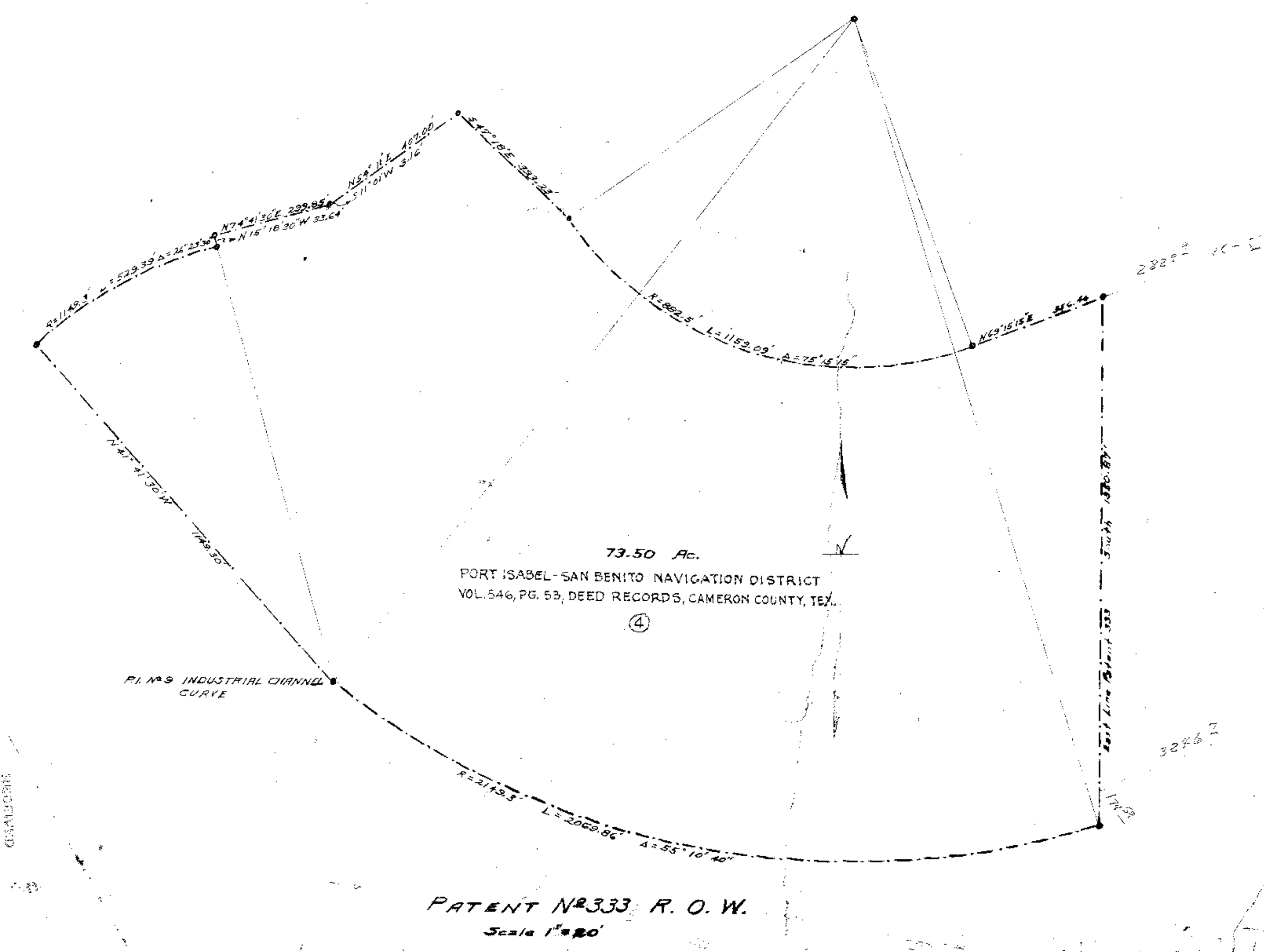
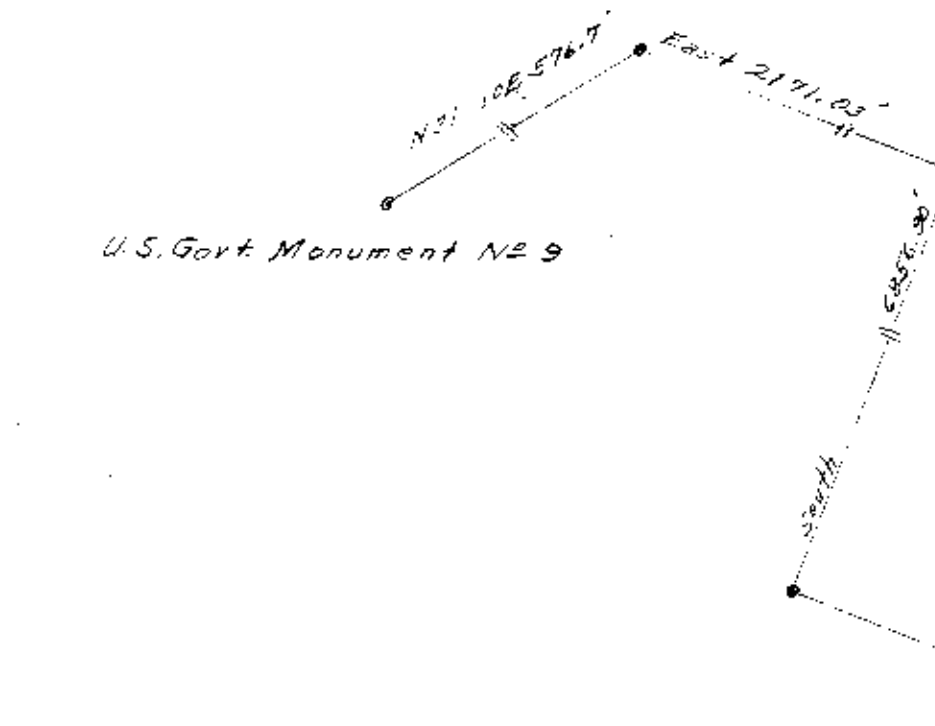
PORT ISABEL-SAN BENITO NAVIGATION DISTRICT - 73.50 ACS. VOL. 546, PG. 53, DEED RECORDS CAMERON COUNTY, TEXAS

PERMANENT HIGHWAY RIGHT OF WAY

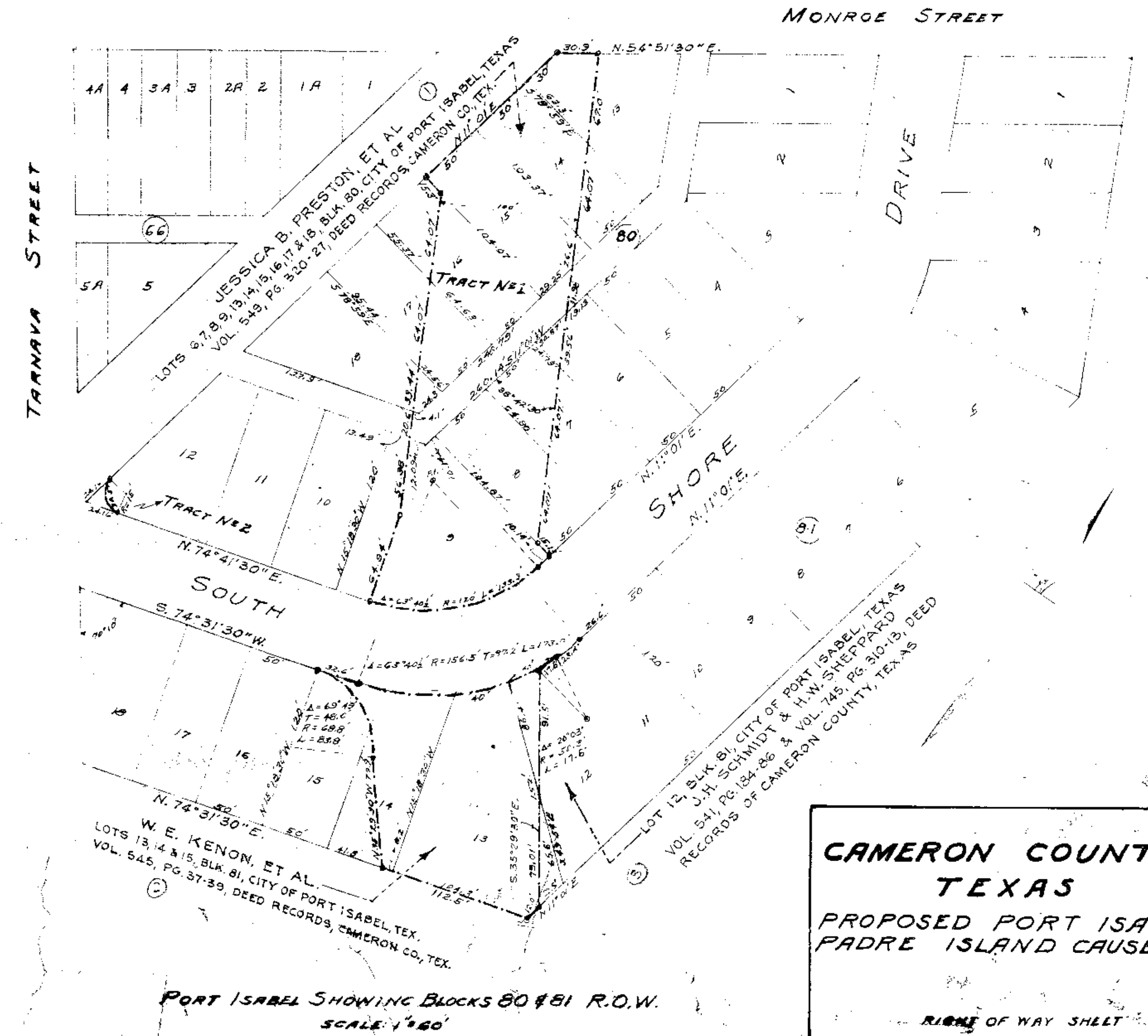
R.O.W. - SEE ACT OF STATE LEGISLATURE ARTICLE 6795b-1 - 50TH LEG. 1947

TEMPORARY CONSTRUCTION AREA

PORT ISABEL-PADRE ISLAND CAUSEWAY R.O.W. SCALE 1"=500'



PATENT NO. 333 R.O.W. Scale 1"=80'



CAMERON COUNTY TEXAS
PROPOSED PORT ISABEL PADRE ISLAND CAUSEWAY
RIGHT OF WAY SHEET
9-30-52

RECORDED
AUG 31 1952
General Land Office

SWITCH FILE NO. 4
COUNTY, Cameron