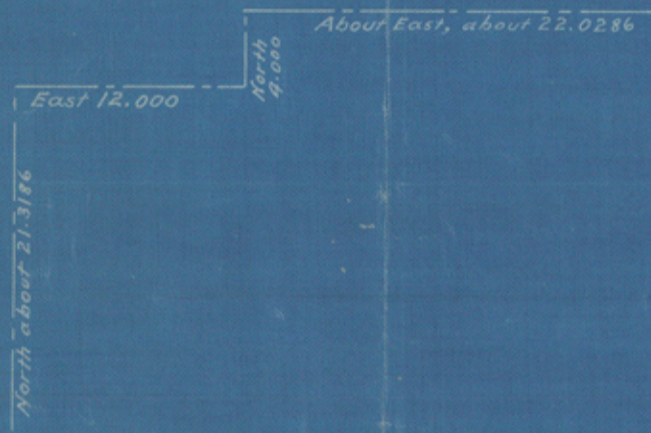
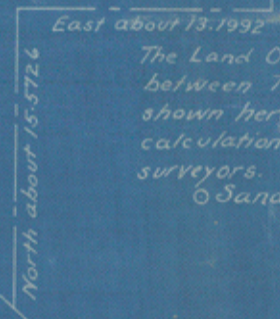


By scale from the Official Map the north-west and south-west boundaries of Pecos County are considerably longer than the distances shown by the field notes and placed hereon.

Fort Stockton
PECOS COUNTY



TERRELL COUNTY
The Land Office has no field notes of the boundary between Terrell and Pecos Counties. The lines are shown hereon as described by the statutes and by calculations based upon sketches and connections by surveyors.
Anderson



junction of west bank of San Francisco Creek and Rio Grande.
Latitude 29° 52' 48"
Longitude 102° 26' 08"

VAL VERDE COUNTY

Sketch with field note calls of the boundaries of the Counties shown hereon. Distances in Miles. Scale: One Inch to Ten Miles.

GENERAL LAND OFFICE
AUSTIN TEXAS. OCTOBER 23-1915.

Del Rio
By scale from Official Map. See field notes by surveyors.